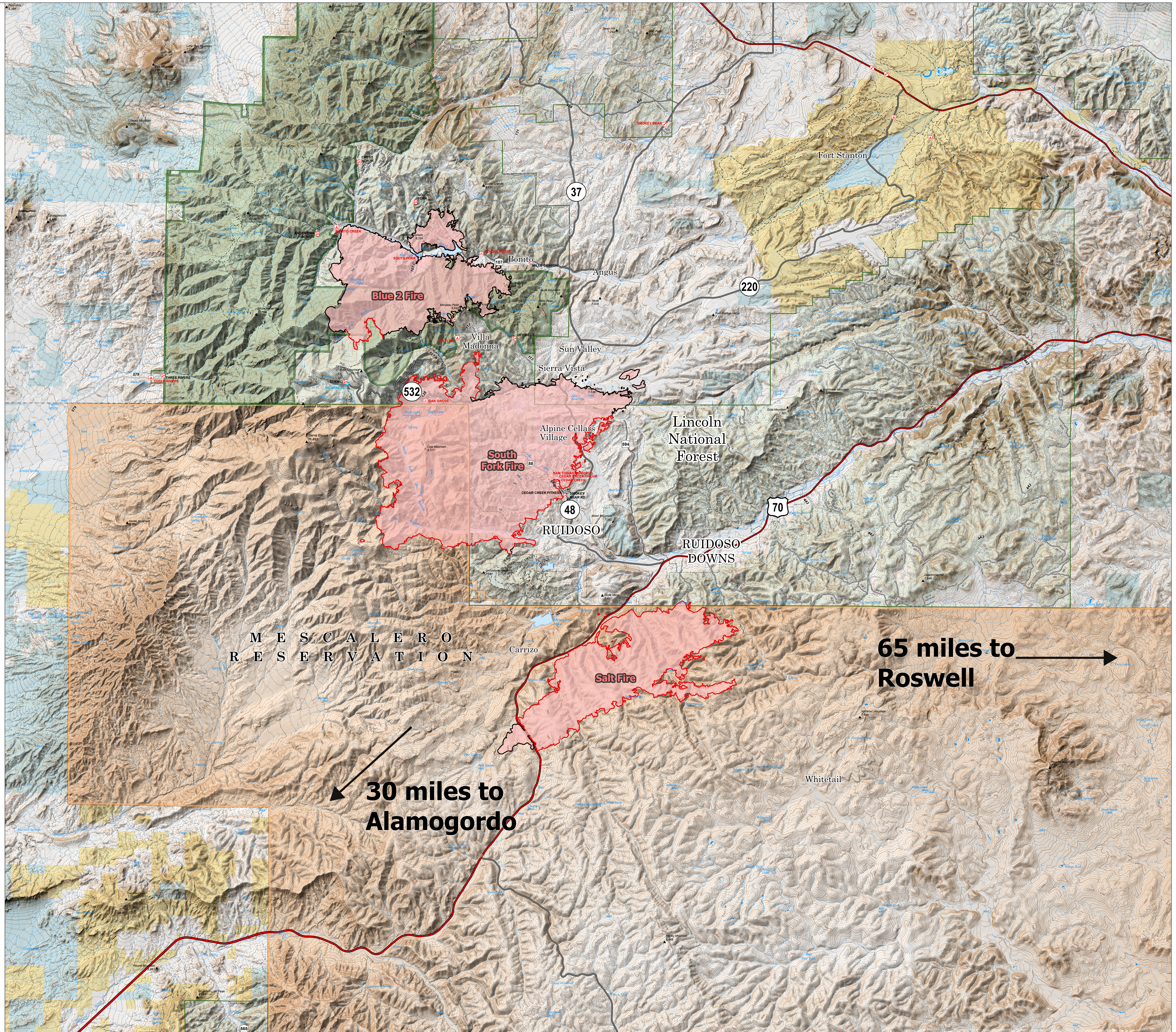


# Public Information

6/22/2024 Day  
 South Fork  
 NM-MEA-000382  
 16,614 acres at 6/21/2024 1900hr

Salt  
 NM-MEA-000385  
 7,652 acres at 6/21/2024 1900hr

- Contained
- Uncontained
- Primary Highway
- Secondary Highway
- State Road (Dirt)
- ▭ Tribal Lands
- ▭ USFS Roadless Areas
- ▭ USFS Wilderness
- ▭ Forest Service Land
- ▭ Bureau of Land Management Lands
- ▭ State Lands
- ▭ Wildfire Daily Fire Perimeter



M E S C A L E R O  
 R E S E R V A T I O N

30 miles to  
 Alamogordo

65 miles to  
 Roswell

