

Medical Transportation

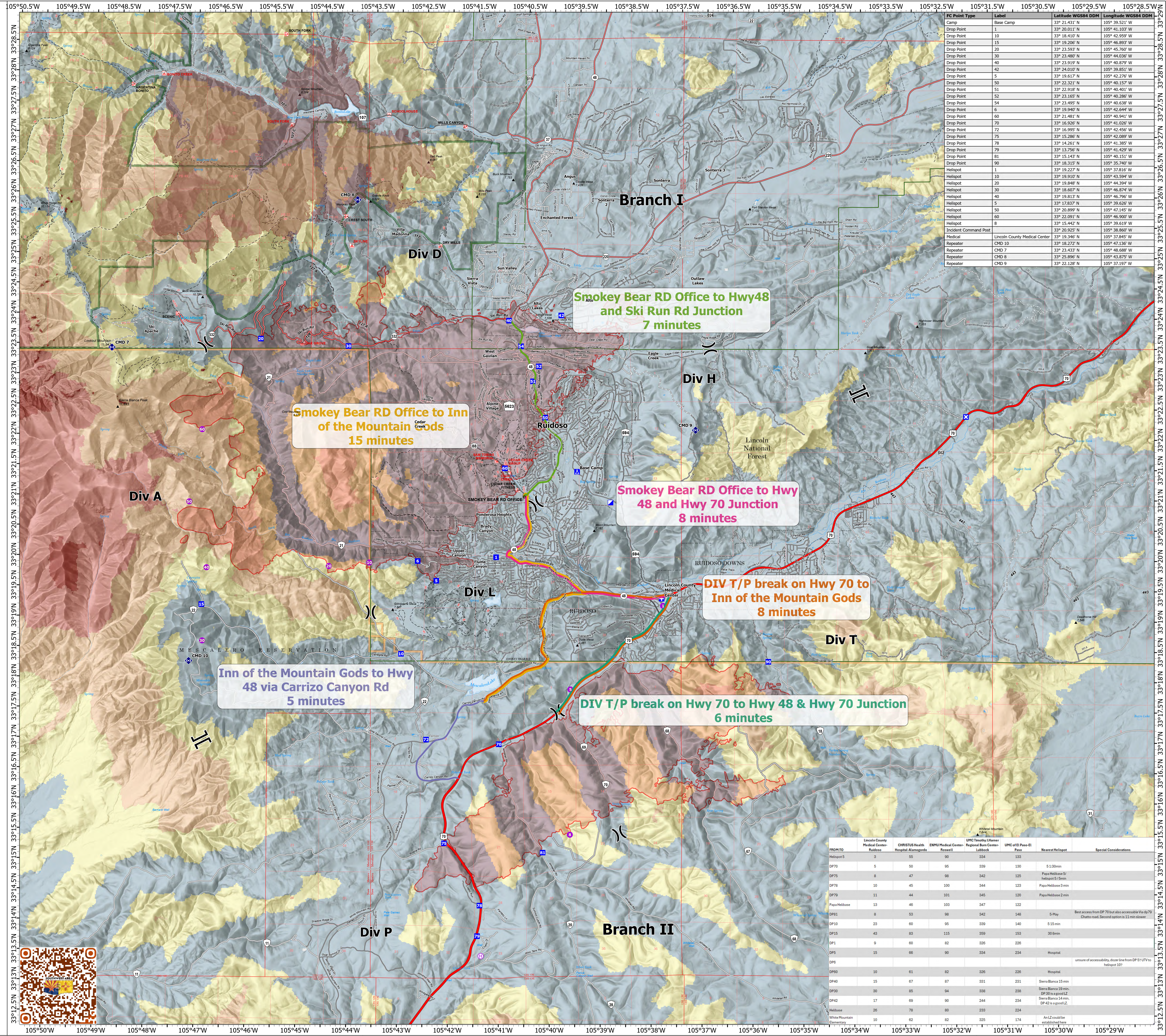
6/23/2024 Day
South Fork
NM-MEA-000382

17,551 acres at 6/22/2024 1315hr

Salt
NM-MEA-000385

7,775 acres at 6/22/2024 1315hr

- Helispot
- ⊕ Helibase
- ⌘ Division Break
- ⌚ Branch Break
- ⊕ Medical
- 🚚 Incident Command Post
- 📍 Drop Point
- ⓧ Closure
- 🏕 Camp
- 📶 Repeater
- Access Route
- 🔴 Wildfire Daily Fire Perimeter
- 📍 Ranger District Office
- 🛣 Primary Highway
- 🛣 Secondary Highway
- 🛣 Secondary Paved
- 🛣 Secondary Dirt
- 🛣 Paved
- 🛣 Gravel Road
- 🛣 Dirt Road
- 🛣 Unimproved Road
- 🛣 Forest Service Roads Closed
- 🌲 FS Wilderness Boundary
- 📅 Blue 2 (2024)
- 🕒 Ground Evacuation Time
- 🕒 0 to 1 hours
- 🕒 1 to 2 hours
- 🕒 2 to 4 hours
- 🕒 4 to 6 hours
- 🕒 More than 6 hours



FC Point Type	Label	Latitude WGS84 DDM	Longitude WGS84 DDM
Base Camp	Base Camp	33° 21.431' N	105° 39.521' W
Drop Point	1	33° 20.011' N	105° 41.103' W
Drop Point	10	33° 18.410' N	105° 40.959' W
Drop Point	15	33° 19.206' N	105° 46.893' W
Drop Point	20	33° 23.593' N	105° 45.760' W
Drop Point	30	33° 23.480' N	105° 44.036' W
Drop Point	40	33° 23.919' N	105° 40.879' W
Drop Point	42	33° 24.010' N	105° 39.851' W
Drop Point	5	33° 19.617' N	105° 40.279' W
Drop Point	50	33° 22.321' N	105° 40.152' W
Drop Point	51	33° 22.918' N	105° 40.401' W
Drop Point	52	33° 23.165' N	105° 40.286' W
Drop Point	54	33° 23.495' N	105° 40.638' W
Drop Point	6	33° 19.940' N	105° 42.644' W
Drop Point	60	33° 21.481' N	105° 40.151' W
Drop Point	70	33° 16.926' N	105° 41.026' W
Drop Point	72	33° 16.995' N	105° 42.456' W
Drop Point	75	33° 15.286' N	105° 42.089' W
Drop Point	78	33° 14.261' N	105° 41.385' W
Drop Point	79	33° 13.756' N	105° 41.429' W
Drop Point	81	33° 15.143' N	105° 40.151' W
Drop Point	800	33° 18.315' N	105° 35.740' W
Helispot	1	33° 19.227' N	105° 37.816' W
Helispot	10	33° 19.910' N	105° 43.594' W
Helispot	20	33° 19.848' N	105° 44.394' W
Helispot	30	33° 18.607' N	105° 46.874' W
Helispot	40	33° 19.813' N	105° 46.790' W
Helispot	5	33° 17.817' N	105° 39.626' W
Helispot	50	33° 20.899' N	105° 47.145' W
Helispot	60	33° 22.091' N	105° 46.900' W
Helispot	8	33° 15.442' N	105° 39.619' W
Incident Command Post	Lincoln County Medical Center	33° 20.925' N	105° 38.860' W
Repeater	CMD 10	33° 18.272' N	105° 47.132' W
Repeater	CMD 7	33° 23.433' N	105° 48.688' W
Repeater	CMD 8	33° 25.896' N	105° 43.875' W
Repeater	CMD 9	33° 22.128' N	105° 37.197' W

FROM/TO	Lincoln County Medical Center - Ruidoso	CHRISTUS Health Hospital - Alamogordo	ENMU Medical Center - Roswell	UPMC Tripler - Honolulu	UPMC of El Paso - El Paso	Nearest Helispot	Special Considerations
Helispot 9	3	55	90	334	133		
DP70	5	50	95	309	130		5-10min
DP75	8	47	98	342	125		Papa Helibase 5 min
DP78	10	45	100	344	123		Papa Helibase 3 min
DP79	11	44	101	345	120		Papa Helibase 2 min
Papa Helibase	13	46	103	347	122		
DP81	8	53	98	342	148		5 Min Best access from DP 70 but also accessible via DP9 Chitto road. Second option is 11 min slower.
DP10	23	60	95	339	140		5-15 min
DP15	43	83	115	369	153		30-80 min
DP1	9	60	82	326	226		
DP5	15	66	90	334	234		Hospital
DP6							ensure of accessibility, close line from DP 51 UTV to helispot 107
DP90	10	61	82	326	226		Hospital
DP40	15	67	87	331	231		Sierra Blanca 15 min
DP30	30	85	94	338	238		Sierra Blanca 19 min, DP 20 is a good LZ
DP42	17	69	90	344	234		Sierra Blanca 14 min, DP 42 is a good LZ
Helibase White Mountain Elementary	26	78	80	323	224		An LZ could be established here
	10	62	82	325	174		

0 1 2 Miles

1:36,000 | SWIMT 5 | 6/22/2024 2236
Acres from Mixed Methods
North American 1983 Datum. LatLong Grid