

Air Ops

6/24/2024 Day

South Fork

NM-MEA-000382

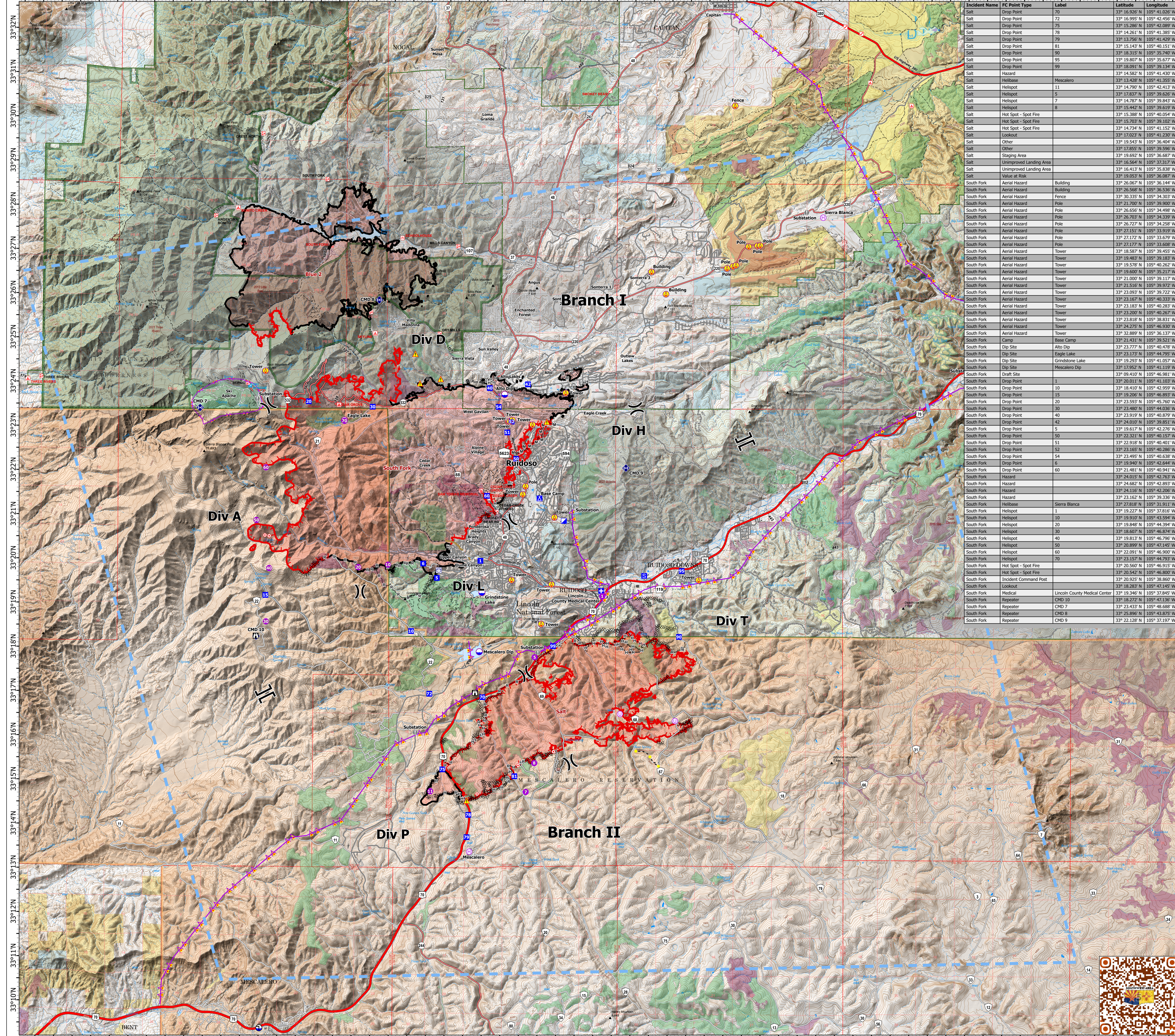
17,551 acres at 6/22/2024 1315hr

Salt

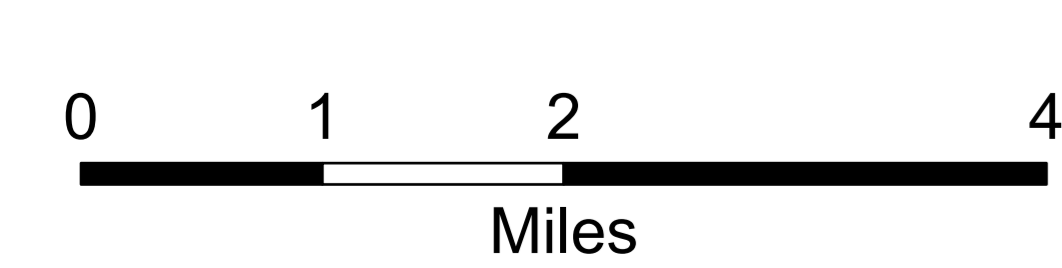
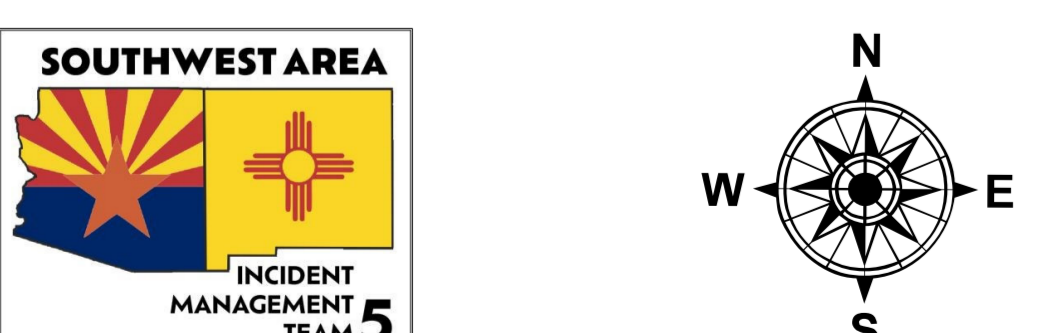
NM-MEA-000385

7,816 acres at 6/23/2024 1733hr

- Structure
- Aerial Hazard
- Helispot
- Helibase
- Unimproved Landing Area
- ⊗ Division Break
- ⊗ Branch Break
- ⊗ Medical
- ⊗ Incident Command Post
- Drop Point
- Camp
- Staging Area
- Lookout
- Hot Spot - Spot Fire
- Value at Risk
- Other
- ◆ Repeater
- ▲ Hazard
- Dip Site
- Draft Site
- ⊗ Completed Dozer Line
- ⊗ Completed Hand Line
- ⊗ Completed Mixed Construction Line
- ⊗ Completed Road as Line
- Access Route
- ⋯ Highlighted Feature
- ⋯ Other
- Road Repair
- Aerial Hazard
- Temporary Flight Restriction
- Contained
- Uncontained
- Wildfire Daily Fire Perimeter
- Primary Highway
- Secondary Highway
- Secondary Paved
- State Road (Dirt)
- Secondary Dirt
- Paved
- Gravel Road
- Dirt Road
- Unimproved Road
- Forest Service Roads Closed
- FS Wilderness Boundary
- Forest Service Land
- Bureau of Land Management Lands
- State Lands
- USFS Historic Fire Perimeters
- Interagency Fuels Treatments
- Fire - Broadcast Burn
- Fire - Other
- Mechanical
- Other



Incident Name	Drop Point Type	Label	Latitude	Longitude
Salt	Drop Point	70	33° 16.926' N	105° 41.026' W
Salt	Drop Point	72	33° 16.995' N	105° 42.456' W
Salt	Drop Point	75	33° 15.286' N	105° 42.089' W
Salt	Drop Point	78	33° 14.261' N	105° 41.385' W
Salt	Drop Point	79	33° 13.756' N	105° 41.429' W
Salt	Drop Point	81	33° 15.143' N	105° 41.151' W
Salt	Drop Point	89	33° 18.311' N	105° 39.843' W
Salt	Drop Point	95	33° 19.807' N	105° 35.577' W
Salt	Drop Point	99	33° 18.091' N	105° 39.134' W
Salt	Hazard		33° 14.582' N	105° 41.430' W
Salt	Helibase	Mescalero	33° 13.428' N	105° 41.355' W
Salt	Helispot	11	33° 14.790' N	105° 42.413' W
Salt	Helispot	5	33° 17.837' N	105° 39.626' W
Salt	Helispot	7	33° 14.787' N	105° 39.863' W
Salt	Helispot	8	33° 15.442' N	105° 39.012' W
Salt	Hot Spot - Spot Fire		33° 15.388' N	105° 40.054' W
Salt	Hot Spot - Spot Fire		33° 15.703' N	105° 39.102' W
Salt	Hot Spot - Spot Fire		33° 14.734' N	105° 41.152' W
Salt	Lookout		33° 17.023' N	105° 41.230' W
Salt	Other		33° 19.543' N	105° 36.404' W
Salt	Other		33° 17.855' N	105° 39.596' W
Salt	Staging Area		33° 17.855' N	105° 39.596' W
Salt	Unimproved Landing Area		33° 16.564' N	105° 37.217' W
Salt	Unimproved Landing Area		33° 16.413' N	105° 35.838' W
South Fork	Value at Risk		33° 19.053' N	105° 36.087' W
South Fork	Aerial Hazard	Building	33° 26.067' N	105° 36.144' W
South Fork	Aerial Hazard	Building	33° 26.568' N	105° 36.536' W
South Fork	Aerial Hazard	Fence	33° 30.335' N	105° 34.303' W
South Fork	Aerial Hazard	Pole	33° 18.207' N	105° 39.863' W
South Fork	Aerial Hazard	Pole	33° 26.656' N	105° 34.498' W
South Fork	Aerial Hazard	Pole	33° 26.703' N	105° 34.339' W
South Fork	Aerial Hazard	Pole	33° 26.727' N	105° 34.258' W
South Fork	Aerial Hazard	Pole	33° 27.172' N	105° 33.679' W
South Fork	Aerial Hazard	Pole	33° 27.177' N	105° 33.608' W
South Fork	Aerial Hazard	Tower	33° 18.587' N	105° 39.453' W
South Fork	Aerial Hazard	Tower	33° 19.468' N	105° 40.282' W
South Fork	Aerial Hazard	Tower	33° 19.578' N	105° 40.262' W
South Fork	Aerial Hazard	Tower	33° 23.818' N	105° 38.811' W
South Fork	Aerial Hazard	Tower	33° 24.275' N	105° 46.930' W
South Fork	Aerial Hazard	Tower	33° 32.889' N	105° 36.137' W
South Fork	Camp	Base Camp	33° 21.431' N	105° 39.521' W
South Fork	Dip Site	Alto Dip	33° 23.777' N	105° 40.478' W
South Fork	Dip Site	Eagle Lake	33° 23.127' N	105° 40.333' W
South Fork	Dip Site	Grindstone Lake	33° 19.293' N	105° 41.057' W
South Fork	Dip Site	Mescalero Dip	33° 17.952' N	105° 41.119' W
South Fork	Draft Site		33° 09.410' N	105° 46.981' W
South Fork	Drop Point	1	33° 20.011' N	105° 41.103' W
South Fork	Drop Point	10	33° 18.410' N	105° 42.959' W
South Fork	Drop Point	15	33° 19.206' N	105° 46.893' W
South Fork	Drop Point	20	33° 21.593' N	105° 45.760' W
South Fork	Drop Point	30	33° 23.480' N	105° 40.038' W
South Fork	Drop Point	40	33° 23.919' N	105° 40.879' W
South Fork	Drop Point	42	33° 24.010' N	105° 39.851' W
South Fork	Drop Point	5	33° 19.617' N	105° 42.276' W
South Fork	Drop Point	50	33° 22.321' N	105° 40.157' W
South Fork	Drop Point	51	33° 22.918' N	105° 40.401' W
South Fork	Drop Point	52	33° 23.165' N	105° 40.286' W
South Fork	Drop Point	54	33° 23.495' N	105° 40.638' W
South Fork	Drop Point	6	33° 19.940' N	105° 42.664' W
South Fork	Drop Point	60	33° 21.481' N	105° 40.941' W
South Fork	Hazard		33° 24.015' N	105° 42.763' W
South Fork	Hazard		33° 24.682' N	105° 42.893' W
South Fork	Hazard		33° 24.116' N	105° 42.206' W
South Fork	Hazard		33° 23.162' N	105° 39.336' W
South Fork	Helibase	Sierra Blanca	33° 27.818' N	105° 31.911' W
South Fork	Helispot	1	33° 19.227' N	105° 41.811' W
South Fork	Helispot	10	33° 19.910' N	105° 43.594' W
South Fork	Helispot	20	33° 19.848' N	105° 44.394' W
South Fork	Helispot	30	33° 18.607' N	105° 44.874' W
South Fork	Helispot	40	33° 19.813' N	105° 46.796' W
South Fork	Helispot	50	33° 20.899' N	105° 47.145' W
South Fork	Helispot	60	33° 22.091' N	105° 46.900' W
South Fork	Helispot	70	33° 23.156' N	105° 46.900' W
South Fork	Hot Spot - Spot Fire		33° 20.550' N	105° 46.915' W
South Fork	Hot Spot - Spot Fire		33° 20.542' N	105° 46.800' W
South Fork	Incident Command Post		33° 20.925' N	105° 38.860' W
South Fork	Lookout		33° 18.283' N	105° 47.145' W
South Fork	Medical	Lincoln County Medical Center	33° 19.346' N	105° 37.845' W
South Fork	Repeater	CMD 10	33° 18.272' N	105° 47.136' W
South Fork	Repeater	CMD 7	33° 23.433' N	105° 48.688' W
South Fork	Repeater	CMD 8	33° 19.888' N	105° 33.875' W
South Fork	Repeater	CMD 9	33° 22.128' N	105° 37.197' W



1:50,399 | SW IMT 5 | 6/23/2024 2100
Acres from Mixed Methods
North American 1983 Datum. LatLong Grid

