

Medical Transportation

6/24/2024 Day
South Fork
NM-MEA-000382

17,551 acres at 6/22/2024 1315hr

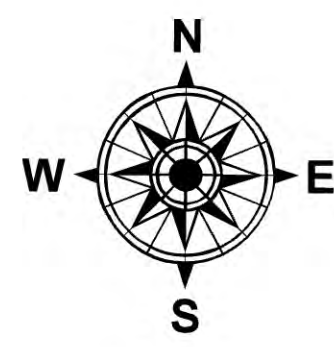
Salt
NM-MEA-000385

7,816 acres at 6/23/2024 1733hr

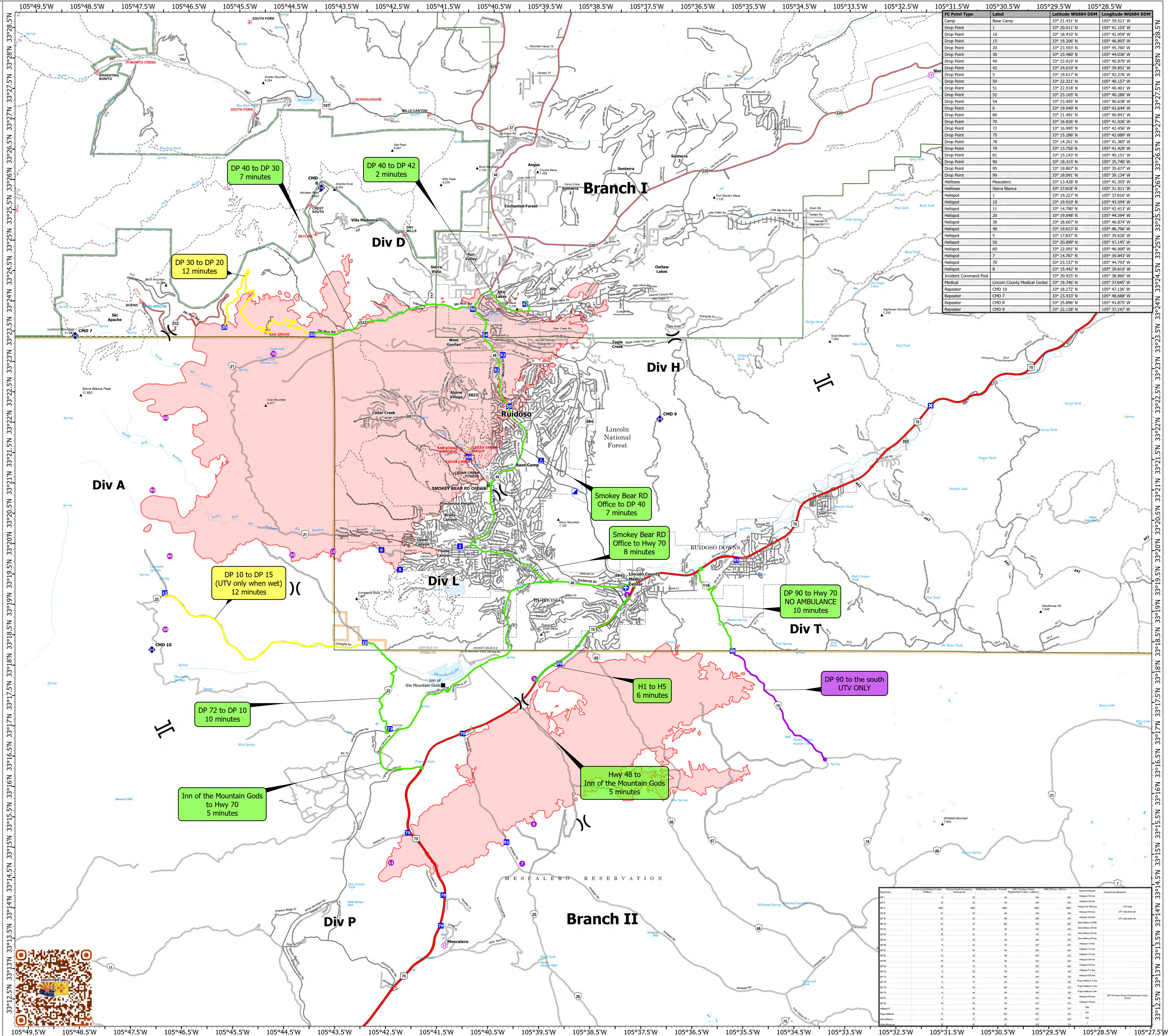
- Helispot
- ⊕ Helibase
- ⌘ Division Break
- ⌚ Branch Break
- ⊕ Medical
- ⚡ Incident Command Post
- Drop Point
- ⊠ Closure
- ⊠ Camp
- ⚡ Repeater
- Access Route
- ▭ Wildfire Daily Fire Perimeter
- Ⓜ Ranger District Office
- Primary Highway
- Secondary Highway
- Secondary Paved
- Secondary Dirt
- ~ Paved
- ~ Gravel Road
- ~ Dirt Road
- ~ Unimproved Road
- ~ Forest Service Roads Closed
- ▭ FS Wilderness Boundary

Medical Transport Times

- 0-10 Minutes
- 10-20 Minutes
- 20-30 Minutes
- 30+ Minutes
- UTV Only



0 1 2
Miles



FC Point Type	Label	Latitude WGS84 DDM	Longitude WGS84 DDM
Camp	Base Camp	33° 21.431' N	105° 39.521' W
Drop Point	1	33° 20.011' N	105° 39.521' W
Drop Point	10	33° 18.410' N	105° 42.959' W
Drop Point	15	33° 19.206' N	105° 46.893' W
Drop Point	20	33° 23.593' N	105° 45.760' W
Drop Point	30	33° 23.480' N	105° 44.036' W
Drop Point	40	33° 23.919' N	105° 40.879' W
Drop Point	42	33° 24.010' N	105° 39.851' W
Drop Point	5	33° 19.617' N	105° 42.276' W
Drop Point	50	33° 22.321' N	105° 40.157' W
Drop Point	51	33° 22.918' N	105° 40.401' W
Drop Point	52	33° 23.165' N	105° 40.286' W
Drop Point	54	33° 23.495' N	105° 40.638' W
Drop Point	6	33° 19.940' N	105° 41.429' W
Drop Point	60	33° 21.481' N	105° 40.941' W
Drop Point	70	33° 16.926' N	105° 41.026' W
Drop Point	72	33° 16.995' N	105° 42.456' W
Drop Point	75	33° 15.286' N	105° 42.089' W
Drop Point	78	33° 14.261' N	105° 41.385' W
Drop Point	79	33° 13.756' N	105° 41.429' W
Drop Point	81	33° 15.145' N	105° 40.151' W
Drop Point	90	33° 18.315' N	105° 35.740' W
Drop Point	95	33° 19.807' N	105° 35.677' W
Drop Point	99	33° 18.091' N	105° 39.134' W
Helibase	Mescalero	33° 13.428' N	105° 41.355' W
Helibase	Sierra Blanca	33° 22.918' N	105° 31.911' W
Helispot	1	33° 19.227' N	105° 37.816' W
Helispot	10	33° 19.910' N	105° 43.594' W
Helispot	11	33° 14.700' N	105° 42.413' W
Helispot	20	33° 19.848' N	105° 44.394' W
Helispot	30	33° 18.607' N	105° 46.874' W
Helispot	40	33° 19.813' N	105° 46.761' W
Helispot	5	33° 17.837' N	105° 39.626' W
Helispot	50	33° 20.899' N	105° 47.145' W
Helispot	60	33° 22.091' N	105° 46.900' W
Helispot	7	33° 14.787' N	105° 39.843' W
Helispot	70	33° 23.157' N	105° 44.793' W
Helispot	8	33° 15.442' N	105° 39.612' W
Incident Command Post		33° 20.925' N	105° 38.860' W
Medical	Lincoln County Medical Center	33° 19.346' N	105° 37.945' W
Repeater	CMD 10	33° 18.272' N	105° 47.136' W
Repeater	CMD 7	33° 23.433' N	105° 48.668' W
Repeater	CMD 8	33° 25.896' N	105° 43.875' W
Repeater	CMD 9	33° 22.128' N	105° 37.197' W

Drop Point	Label	Latitude WGS84 DDM	Longitude WGS84 DDM	Medical Transport Time	Notes
DP 10		33° 18.410' N	105° 42.959' W	0-10	
DP 15		33° 19.206' N	105° 46.893' W	0-10	
DP 20		33° 23.593' N	105° 45.760' W	0-10	
DP 30		33° 23.480' N	105° 44.036' W	0-10	
DP 40		33° 23.919' N	105° 40.879' W	0-10	
DP 42		33° 24.010' N	105° 39.851' W	0-10	
DP 5		33° 19.617' N	105° 42.276' W	0-10	
DP 50		33° 22.321' N	105° 40.157' W	0-10	
DP 51		33° 22.918' N	105° 40.401' W	0-10	
DP 52		33° 23.165' N	105° 40.286' W	0-10	
DP 54		33° 23.495' N	105° 40.638' W	0-10	
DP 6		33° 19.940' N	105° 41.429' W	0-10	
DP 60		33° 21.481' N	105° 40.941' W	0-10	
DP 70		33° 16.926' N	105° 41.026' W	0-10	
DP 72		33° 16.995' N	105° 42.456' W	0-10	
DP 75		33° 15.286' N	105° 42.089' W	0-10	
DP 78		33° 14.261' N	105° 41.385' W	0-10	
DP 79		33° 13.756' N	105° 41.429' W	0-10	
DP 81		33° 15.145' N	105° 40.151' W	0-10	
DP 90		33° 18.315' N	105° 35.740' W	0-10	
DP 95		33° 19.807' N	105° 35.677' W	0-10	
DP 99		33° 18.091' N	105° 39.134' W	0-10	
DP 10		33° 18.410' N	105° 42.959' W	10-20	UTV only
DP 15		33° 19.206' N	105° 46.893' W	10-20	UTV only
DP 20		33° 23.593' N	105° 45.760' W	10-20	UTV only
DP 30		33° 23.480' N	105° 44.036' W	10-20	UTV only
DP 40		33° 23.919' N	105° 40.879' W	10-20	UTV only
DP 42		33° 24.010' N	105° 39.851' W	10-20	UTV only
DP 5		33° 19.617' N	105° 42.276' W	10-20	UTV only
DP 50		33° 22.321' N	105° 40.157' W	10-20	UTV only
DP 51		33° 22.918' N	105° 40.401' W	10-20	UTV only
DP 52		33° 23.165' N	105° 40.286' W	10-20	UTV only
DP 54		33° 23.495' N	105° 40.638' W	10-20	UTV only
DP 6		33° 19.940' N	105° 41.429' W	10-20	UTV only
DP 60		33° 21.481' N	105° 40.941' W	10-20	UTV only
DP 70		33° 16.926' N	105° 41.026' W	10-20	UTV only
DP 72		33° 16.995' N	105° 42.456' W	10-20	UTV only
DP 75		33° 15.286' N	105° 42.089' W	10-20	UTV only
DP 78		33° 14.261' N	105° 41.385' W	10-20	UTV only
DP 79		33° 13.756' N	105° 41.429' W	10-20	UTV only
DP 81		33° 15.145' N	105° 40.151' W	10-20	UTV only
DP 90		33° 18.315' N	105° 35.740' W	10-20	UTV only
DP 95		33° 19.807' N	105° 35.677' W	10-20	UTV only
DP 99		33° 18.091' N	105° 39.134' W	10-20	UTV only
DP 10		33° 18.410' N	105° 42.959' W	20-30	
DP 15		33° 19.206' N	105° 46.893' W	20-30	
DP 20		33° 23.593' N	105° 45.760' W	20-30	
DP 30		33° 23.480' N	105° 44.036' W	20-30	
DP 40		33° 23.919' N	105° 40.879' W	20-30	
DP 42		33° 24.010' N	105° 39.851' W	20-30	
DP 5		33° 19.617' N	105° 42.276' W	20-30	
DP 50		33° 22.321' N	105° 40.157' W	20-30	
DP 51		33° 22.918' N	105° 40.401' W	20-30	
DP 52		33° 23.165' N	105° 40.286' W	20-30	
DP 54		33° 23.495' N	105° 40.638' W	20-30	
DP 6		33° 19.940' N	105° 41.429' W	20-30	
DP 60		33° 21.481' N	105° 40.941' W	20-30	
DP 70		33° 16.926' N	105° 41.026' W	20-30	
DP 72		33° 16.995' N	105° 42.456' W	20-30	
DP 75		33° 15.286' N	105° 42.089' W	20-30	
DP 78		33° 14.261' N	105° 41.385' W	20-30	
DP 79		33° 13.756' N	105° 41.429' W	20-30	
DP 81		33° 15.145' N	105° 40.151' W	20-30	
DP 90		33° 18.315' N	105° 35.740' W	20-30	
DP 95		33° 19.807' N	105° 35.677' W	20-30	
DP 99		33° 18.091' N	105° 39.134' W	20-30	
DP 10		33° 18.410' N	105° 42.959' W	30+	
DP 15		33° 19.206' N	105° 46.893' W	30+	
DP 20		33° 23.593' N	105° 45.760' W	30+	
DP 30		33° 23.480' N	105° 44.036' W	30+	
DP 40		33° 23.919' N	105° 40.879' W	30+	
DP 42		33° 24.010' N	105° 39.851' W	30+	
DP 5		33° 19.617' N	105° 42.276' W	30+	
DP 50		33° 22.321' N	105° 40.157' W	30+	
DP 51		33° 22.918' N	105° 40.401' W	30+	
DP 52		33° 23.165' N	105° 40.286' W	30+	
DP 54		33° 23.495' N	105° 40.638' W	30+	
DP 6		33° 19.940' N	105° 41.429' W	30+	
DP 60		33° 21.481' N	105° 40.941' W	30+	
DP 70		33° 16.926' N	105° 41.026' W	30+	
DP 72		33° 16.995' N	105° 42.456' W	30+	
DP 75		33° 15.286' N	105° 42.089' W	30+	
DP 78		33° 14.261' N	105° 41.385' W	30+	
DP 79		33° 13.756' N	105° 41.429' W	30+	
DP 81		33° 15.145' N	105° 40.151' W	30+	
DP 90		33° 18.315' N	105° 35.740' W	30+	
DP 95		33° 19.807' N	105° 35.677' W	30+	
DP 99		33° 18.091' N	105° 39.134' W	30+	
DP 10		33° 18.410' N	105° 42.959' W	UTV Only	
DP 15		33° 19.206' N	105° 46.893' W	UTV Only	
DP 20		33° 23.593' N	105° 45.760' W	UTV Only	
DP 30		33° 23.480' N	105° 44.036' W	UTV Only	
DP 40		33° 23.919' N	105° 40.879' W	UTV Only	
DP 42		33° 24.010' N	105° 39.851' W	UTV Only	
DP 5		33° 19.617' N	105° 42.276' W	UTV Only	
DP 50		33° 22.321' N	105° 40.157' W	UTV Only	
DP 51		33° 22.918' N	105° 40.401' W	UTV Only	
DP 52		33° 23.165' N	105° 40.286' W	UTV Only	
DP 54		33° 23.495' N	105° 40.638' W	UTV Only	
DP 6		33° 19.940' N	105° 41.429' W	UTV Only	
DP 60		33° 21.481' N	105° 40.941' W	UTV Only	
DP 70		33° 16.926' N	105° 41.026' W	UTV Only	
DP 72		33° 16.995' N	105° 42.456' W	UTV Only	
DP 75		33° 15.286' N	105° 42.089' W	UTV Only	
DP 78		33° 14.261' N	105° 41.385' W	UTV Only	
DP 79		33° 13.756' N	105° 41.429' W	UTV Only	
DP 81		33° 15.145' N	105° 40.151' W	UTV Only	
DP 90		33° 18.315' N	105° 35.740' W	UTV Only	
DP 95		33° 19.807' N	105° 35.677' W	UTV Only	
DP 99		33° 18.091' N	105° 39.134' W	UTV Only	