

# Briefing

6/25/2024 Day  
South Fork  
NM-MEA-000382

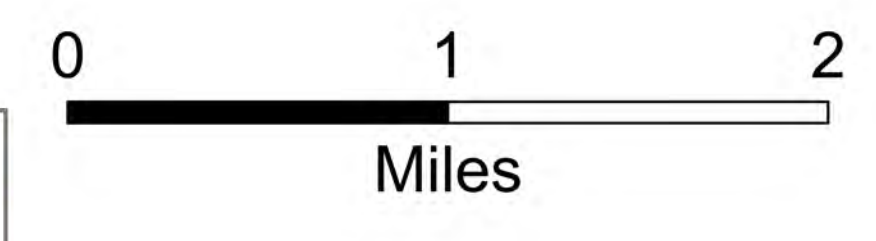
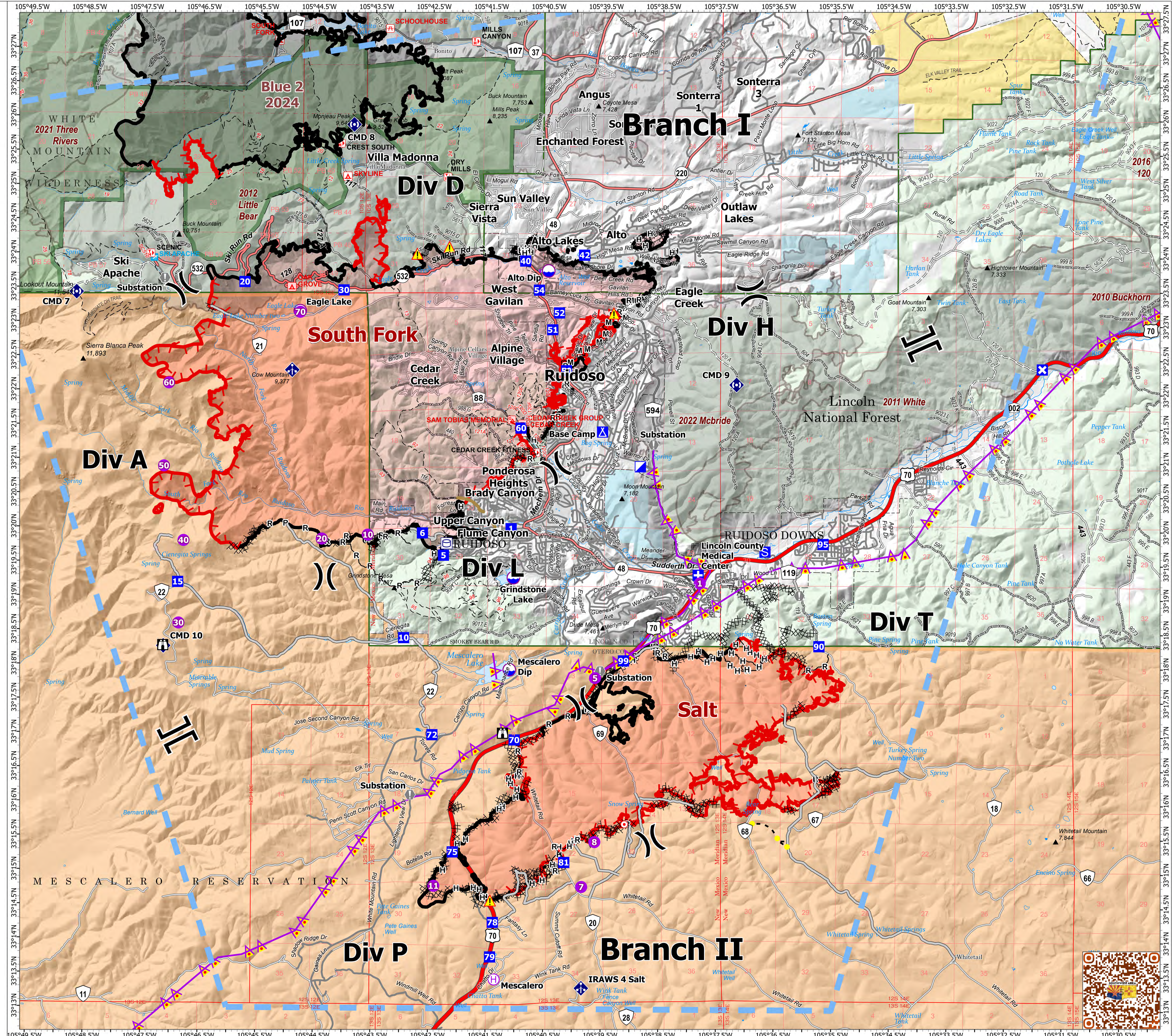
17,556 acres at 6/24/2024 0123hr

Salt

NM-MEA-000385

7,927 acres at 6/24/2024 0123hr

- Helispot
- Helibase
- ⊗ Division Break
- ⊠ Branch Break
- ⊞ Medical
- ⊞ Incident Command Post
- ⊞ Drop Point
- ⊞ Closure
- ⊞ Camp
- ⊞ Staging Area
- ⊞ Lookout
- Hot Spot - Spot Fire
- Value at Risk
- ⊞ Mobile Weather Unit
- ⊞ Repeater
- ⊞ Hazard
- ⊞ Dip Site
- ⊞ Completed Dozer Line
- H- Completed Hand Line
- M- Completed Mixed Construction Line
- R- Completed Road as Line
- Access Route
- Highlighted Feature
- Other
- Road Repair
- Aerial Hazard
- Temporary Flight Restriction
- Fire Edge (Field Collection)
- Contained
- Uncontained
- Wildfire Daily Fire Perimeter
- FS Wilderness Boundary
- Forest Service Land
- Bureau of Land Management Lands
- State Lands
- USFS Historic Fire Perimeters
- Blue 2 (2024)
- Primary Highway
- Secondary Highway
- Secondary Paved
- Secondary Dirt
- GapRoads GTAC Pedestrian Path
- Trail
- Trail
- Paved
- Gravel Road
- Dirt Road
- Unimproved Road
- Forest Service Roads Closed



1:32,000 | SWIMT5 GISS | 6/24/2024 1847  
Acres from Mixed Methods  
North American 1983 Datum, Lat,Long Grid

