

# Medical Transportation

6/25/2024 Day  
South Fork  
NM-MEA-000382

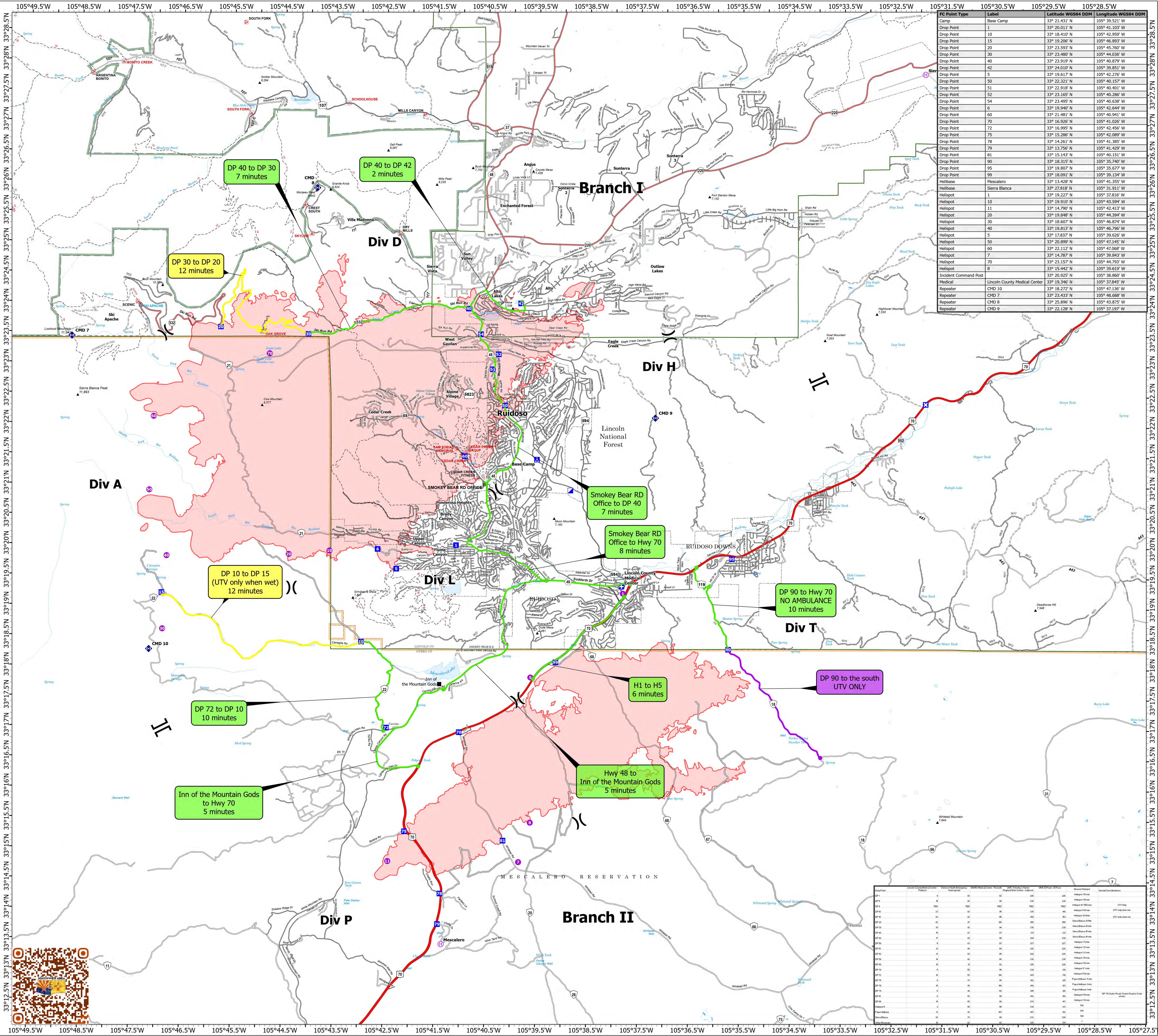
17,556 acres at 6/24/2024 0123hr

Salt  
NM-MEA-000385

7,927 acres at 6/24/2024 0123hr

- Helispot
- ⊕ Helibase
- X Division Break
- || Branch Break
- + Medical
- ▢ Incident Command Post
- Drop Point
- ⊠ Closure
- ⊞ Camp
- ◆ Repeater
- Access Route
- ▭ Wildfire Daily Fire Perimeter
- e Ranger District Office
- Primary Highway
- Secondary Highway
- Secondary Paved
- Secondary Dirt
- ~ Paved
- ~ Gravel Road
- ~ Dirt Road
- ~ Unimproved Road
- ~ Forest Service Roads Closed
- ▭ FS Wilderness Boundary

- ### Medical Transport Times
- ~ 0-10 Minutes
  - ~ 10-20 Minutes
  - ~ 20-30 Minutes
  - ~ 30+ Minutes
  - ~ UTV Only



| FC Point Type         | Label                         | Latitude WGS84 DDM | Longitude WGS84 DDM |
|-----------------------|-------------------------------|--------------------|---------------------|
| Camp                  | Base Camp                     | 33° 21.431' N      | 105° 39.521' W      |
| Drop Point            | 1                             | 33° 20.011' N      | 105° 39.521' W      |
| Drop Point            | 10                            | 33° 18.410' N      | 105° 42.959' W      |
| Drop Point            | 15                            | 33° 19.206' N      | 105° 46.893' W      |
| Drop Point            | 20                            | 33° 23.593' N      | 105° 45.760' W      |
| Drop Point            | 30                            | 33° 23.480' N      | 105° 44.036' W      |
| Drop Point            | 40                            | 33° 23.919' N      | 105° 40.879' W      |
| Drop Point            | 42                            | 33° 24.010' N      | 105° 39.851' W      |
| Drop Point            | 5                             | 33° 19.617' N      | 105° 42.276' W      |
| Drop Point            | 50                            | 33° 22.321' N      | 105° 40.157' W      |
| Drop Point            | 51                            | 33° 22.918' N      | 105° 40.401' W      |
| Drop Point            | 52                            | 33° 23.165' N      | 105° 40.286' W      |
| Drop Point            | 54                            | 33° 23.495' N      | 105° 40.638' W      |
| Drop Point            | 6                             | 33° 19.940' N      | 105° 41.429' W      |
| Drop Point            | 60                            | 33° 21.481' N      | 105° 40.941' W      |
| Drop Point            | 70                            | 33° 16.926' N      | 105° 41.026' W      |
| Drop Point            | 72                            | 33° 16.995' N      | 105° 42.456' W      |
| Drop Point            | 75                            | 33° 15.286' N      | 105° 42.089' W      |
| Drop Point            | 78                            | 33° 14.261' N      | 105° 41.385' W      |
| Drop Point            | 79                            | 33° 13.756' N      | 105° 41.429' W      |
| Drop Point            | 81                            | 33° 15.145' N      | 105° 40.151' W      |
| Drop Point            | 90                            | 33° 18.315' N      | 105° 35.740' W      |
| Drop Point            | 95                            | 33° 19.807' N      | 105° 35.677' W      |
| Drop Point            | 99                            | 33° 18.091' N      | 105° 39.134' W      |
| Helibase              | Mescalero                     | 33° 13.428' N      | 105° 41.355' W      |
| Helibase              | Sierra Blanca                 | 33° 22.818' N      | 105° 31.911' W      |
| Helispot              | 1                             | 33° 19.227' N      | 105° 37.816' W      |
| Helispot              | 10                            | 33° 19.910' N      | 105° 43.594' W      |
| Helispot              | 11                            | 33° 14.700' N      | 105° 42.413' W      |
| Helispot              | 20                            | 33° 19.848' N      | 105° 44.394' W      |
| Helispot              | 30                            | 33° 18.607' N      | 105° 46.874' W      |
| Helispot              | 40                            | 33° 19.813' N      | 105° 46.786' W      |
| Helispot              | 5                             | 33° 17.837' N      | 105° 39.626' W      |
| Helispot              | 50                            | 33° 20.899' N      | 105° 47.145' W      |
| Helispot              | 60                            | 33° 22.112' N      | 105° 47.068' W      |
| Helispot              | 7                             | 33° 14.787' N      | 105° 39.843' W      |
| Helispot              | 70                            | 33° 23.157' N      | 105° 44.793' W      |
| Helispot              | 8                             | 33° 15.442' N      | 105° 39.612' W      |
| Incident Command Post |                               | 33° 20.925' N      | 105° 38.860' W      |
| Medical               | Lincoln County Medical Center | 33° 19.346' N      | 105° 37.945' W      |
| Repeater              | CMD 10                        | 33° 18.272' N      | 105° 47.136' W      |
| Repeater              | CMD 7                         | 33° 23.433' N      | 105° 48.668' W      |
| Repeater              | CMD 8                         | 33° 25.896' N      | 105° 43.875' W      |
| Repeater              | CMD 9                         | 33° 22.128' N      | 105° 37.197' W      |

| Drop Point | Label | Latitude WGS84 DDM | Longitude WGS84 DDM |
|------------|-------|--------------------|---------------------|
| DP 10      | DP 10 | 33° 18.410' N      | 105° 42.959' W      |
| DP 15      | DP 15 | 33° 19.206' N      | 105° 46.893' W      |
| DP 20      | DP 20 | 33° 23.593' N      | 105° 45.760' W      |
| DP 30      | DP 30 | 33° 23.480' N      | 105° 44.036' W      |
| DP 40      | DP 40 | 33° 23.919' N      | 105° 40.879' W      |
| DP 42      | DP 42 | 33° 24.010' N      | 105° 39.851' W      |
| DP 5       | DP 5  | 33° 19.617' N      | 105° 42.276' W      |
| DP 50      | DP 50 | 33° 22.321' N      | 105° 40.157' W      |
| DP 51      | DP 51 | 33° 22.918' N      | 105° 40.401' W      |
| DP 52      | DP 52 | 33° 23.165' N      | 105° 40.286' W      |
| DP 54      | DP 54 | 33° 23.495' N      | 105° 40.638' W      |
| DP 6       | DP 6  | 33° 19.940' N      | 105° 41.429' W      |
| DP 60      | DP 60 | 33° 21.481' N      | 105° 40.941' W      |
| DP 70      | DP 70 | 33° 16.926' N      | 105° 41.026' W      |
| DP 72      | DP 72 | 33° 16.995' N      | 105° 42.456' W      |
| DP 75      | DP 75 | 33° 15.286' N      | 105° 42.089' W      |
| DP 78      | DP 78 | 33° 14.261' N      | 105° 41.385' W      |
| DP 79      | DP 79 | 33° 13.756' N      | 105° 41.429' W      |
| DP 81      | DP 81 | 33° 15.145' N      | 105° 40.151' W      |
| DP 90      | DP 90 | 33° 18.315' N      | 105° 35.740' W      |
| DP 95      | DP 95 | 33° 19.807' N      | 105° 35.677' W      |
| DP 99      | DP 99 | 33° 18.091' N      | 105° 39.134' W      |

1:36,000 | SWMT 5 | 6/24/2024 2046  
Acres from Mixed Methods  
North American 1983 Datum. LatLong Grid