

Air Ops

6/26/2024 Day

South Fork

NM-MEA-000382

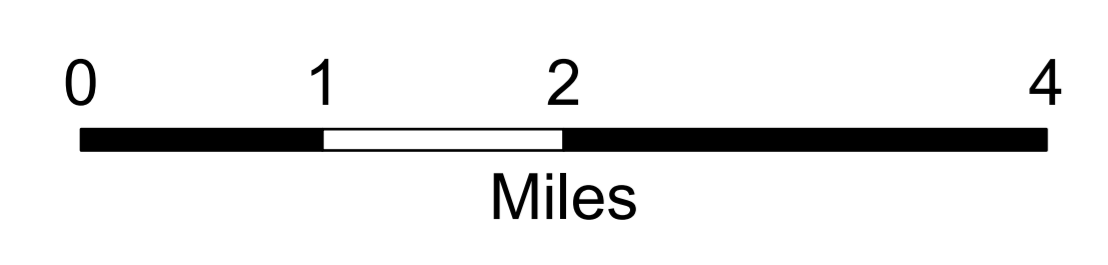
17,569 acres at 6/24/2024 2358hr

Salt

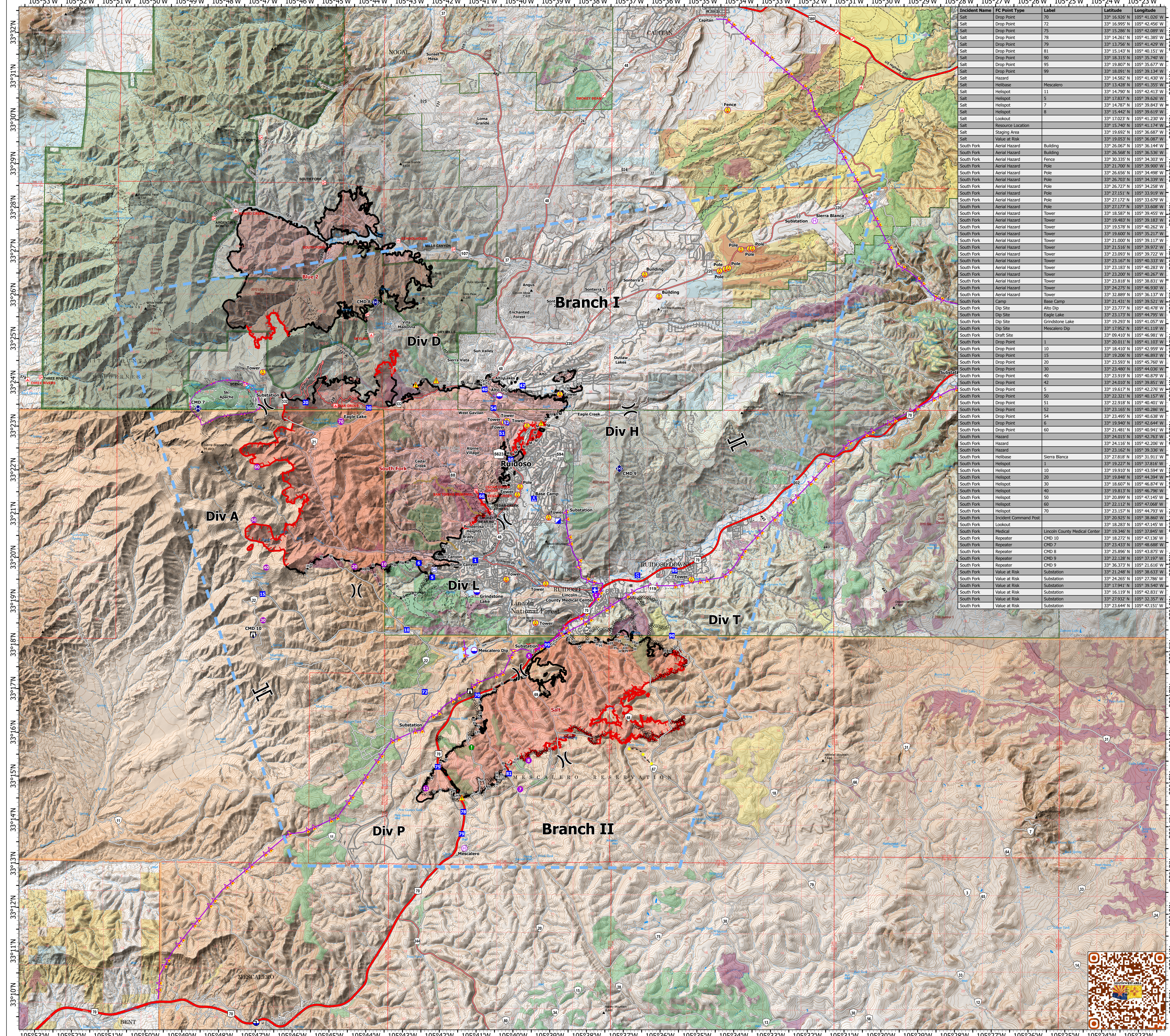
NM-MEA-000385

7,939 acres at 6/24/2024 2358hr

- Structure
- Aerial Hazard
- Helispot
- Helibase
- ✕ Division Break
- ⌘ Branch Break
- ⌘ Medical
- ⌘ Incident Command Post
- Drop Point
- Camp
- Staging Area
- Lookout
- Value at Risk
- Other
- Resource Location
- Repeater
- ▲ Hazard
- Dip Site
- Draft Site
- ⋯ Completed Dozer Line
- Completed Hand Line
- Completed Mixed Construction Line
- Completed Road as Line
- Access Route
- Highlighted Feature
- Other
- Road Repair
- Aerial Hazard
- Temporary Flight Restriction
- Fire Edge (Field Collection)
- Contained
- Uncontained
- Wildfire Daily Fire Perimeter
- Primary Highway
- Secondary Highway
- Secondary Paved
- State Road (Dirt)
- Secondary Dirt
- Paved
- Gravel Road
- Dirt Road
- Unimproved Road
- Forest Service Roads Closed
- FS Wilderness Boundary
- Forest Service Land
- Bureau of Land Management Lands
- State Lands
- USFS Historic Fire Perimeters
- Interagency Fuels Treatments
- Fire - Broadcast Burn
- Fire - Other
- Mechanical
- Other



1:50,399 | SW IMT 5 | 6/25/2024 2033
Acres from Mixed Methods
North American 1983 Datum. LatLong Grid



Incident Name	FC Point Type	Lat	Longitude
Salt	Drop Point	70	33° 16.926' N 105° 41.026' W
Salt	Drop Point	72	33° 16.995' N 105° 42.456' W
Salt	Drop Point	75	33° 15.286' N 105° 42.089' W
Salt	Drop Point	78	33° 14.261' N 105° 41.385' W
Salt	Drop Point	79	33° 13.756' N 105° 41.429' W
Salt	Drop Point	81	33° 15.143' N 105° 41.151' W
Salt	Drop Point	89	33° 18.311' N 105° 40.832' W
Salt	Drop Point	95	33° 19.807' N 105° 35.577' W
Salt	Drop Point	99	33° 18.091' N 105° 39.134' W
Salt	Hazard		33° 14.582' N 105° 41.430' W
Salt	Helibase	Mescalero	33° 13.428' N 105° 41.355' W
Salt	Helispot	11	33° 14.790' N 105° 42.413' W
Salt	Helispot	5	33° 17.837' N 105° 39.628' W
Salt	Helispot	7	33° 14.787' N 105° 39.863' W
Salt	Helispot	8	33° 15.442' N 105° 39.612' W
Salt	Lookout		33° 17.023' N 105° 41.230' W
Salt	Resource Location		33° 15.740' N 105° 41.174' W
Salt	Staging Area		33° 19.692' N 105° 36.687' W
Salt	Value at Risk		33° 19.053' N 105° 36.087' W
South Fork	Aerial Hazard	Building	33° 26.057' N 105° 36.144' W
South Fork	Aerial Hazard	Building	33° 26.988' N 105° 36.536' W
South Fork	Aerial Hazard	Fence	33° 24.287' N 105° 34.202' W
South Fork	Aerial Hazard	Pole	33° 21.700' N 105° 39.907' W
South Fork	Aerial Hazard	Pole	33° 26.656' N 105° 34.498' W
South Fork	Aerial Hazard	Pole	33° 26.703' N 105° 34.339' W
South Fork	Aerial Hazard	Pole	33° 26.727' N 105° 34.258' W
South Fork	Aerial Hazard	Pole	33° 27.151' N 105° 33.919' W
South Fork	Aerial Hazard	Pole	33° 27.172' N 105° 33.679' W
South Fork	Aerial Hazard	Pole	33° 24.287' N 105° 39.863' W
South Fork	Aerial Hazard	Tower	33° 18.587' N 105° 39.455' W
South Fork	Aerial Hazard	Tower	33° 19.483' N 105° 39.183' W
South Fork	Aerial Hazard	Tower	33° 19.578' N 105° 40.262' W
South Fork	Aerial Hazard	Tower	33° 19.600' N 105° 35.217' W
South Fork	Aerial Hazard	Tower	33° 21.000' N 105° 39.117' W
South Fork	Aerial Hazard	Tower	33° 21.516' N 105° 39.972' W
South Fork	Aerial Hazard	Tower	33° 23.093' N 105° 39.722' W
South Fork	Aerial Hazard	Tower	33° 23.168' N 105° 40.286' W
South Fork	Aerial Hazard	Tower	33° 23.183' N 105° 40.283' W
South Fork	Aerial Hazard	Tower	33° 23.200' N 105° 40.267' W
South Fork	Aerial Hazard	Tower	33° 23.818' N 105° 38.831' W
South Fork	Aerial Hazard	Tower	33° 24.275' N 105° 46.930' W
South Fork	Aerial Hazard	Tower	33° 32.889' N 105° 36.137' W
South Fork	Camp	Base Camp	33° 21.431' N 105° 39.521' W
South Fork	Dip Site	Sierra Blanca	33° 19.293' N 105° 41.057' W
South Fork	Dip Site	Mescalero Dip	33° 19.522' N 105° 41.119' W
South Fork	Draft Site		33° 09.410' N 105° 46.981' W
South Fork	Drop Point	1	33° 20.011' N 105° 41.103' W
South Fork	Drop Point	10	33° 18.410' N 105° 42.959' W
South Fork	Drop Point	15	33° 19.208' N 105° 46.892' W
South Fork	Drop Point	20	33° 21.593' N 105° 46.702' W
South Fork	Drop Point	30	33° 23.480' N 105° 44.036' W
South Fork	Drop Point	40	33° 23.919' N 105° 40.879' W
South Fork	Drop Point	42	33° 24.010' N 105° 39.851' W
South Fork	Drop Point	5	33° 19.617' N 105° 42.276' W
South Fork	Drop Point	50	33° 22.321' N 105° 40.157' W
South Fork	Drop Point	51	33° 22.918' N 105° 40.401' W
South Fork	Drop Point	53	33° 23.168' N 105° 40.286' W
South Fork	Drop Point	54	33° 23.495' N 105° 40.638' W
South Fork	Drop Point	5	33° 19.940' N 105° 42.644' W
South Fork	Drop Point	60	33° 21.481' N 105° 40.941' W
South Fork	Hazard		33° 24.015' N 105° 42.763' W
South Fork	Hazard		33° 24.116' N 105° 42.206' W
South Fork	Hazard		33° 23.162' N 105° 39.336' W
South Fork	Helibase	Sierra Blanca	33° 27.815' N 105° 31.911' W
South Fork	Helispot	1	33° 18.227' N 105° 41.816' W
South Fork	Helispot	10	33° 19.910' N 105° 43.594' W
South Fork	Helispot	20	33° 19.848' N 105° 44.394' W
South Fork	Helispot	30	33° 18.607' N 105° 46.874' W
South Fork	Helispot	40	33° 19.813' N 105° 46.796' W
South Fork	Helispot	50	33° 20.899' N 105° 47.145' W
South Fork	Helispot	60	33° 22.112' N 105° 47.068' W
South Fork	Helispot	70	33° 21.157' N 105° 46.733' W
South Fork	Incident Command Post		33° 20.925' N 105° 38.862' W
South Fork	Lookout		33° 18.283' N 105° 47.145' W
South Fork	Medical	Lincoln County Medical Center	33° 19.346' N 105° 37.845' W
South Fork	Repeater	CMD 10	33° 18.272' N 105° 47.136' W
South Fork	Repeater	CMD 7	33° 23.433' N 105° 48.688' W
South Fork	Repeater	CMD 8	33° 25.896' N 105° 43.875' W
South Fork	Repeater	CMD 9	33° 22.168' N 105° 47.253' W
South Fork	Repeater	CMD 9	33° 36.377' N 105° 21.616' W
South Fork	Value at Risk	Substation	33° 21.248' N 105° 38.633' W
South Fork	Value at Risk	Substation	33° 24.265' N 105° 27.786' W
South Fork	Value at Risk	Substation	33° 17.941' N 105° 39.540' W
South Fork	Value at Risk	Substation	33° 16.119' N 105° 42.831' W
South Fork	Value at Risk	Substation	33° 27.932' N 105° 32.357' W
South Fork	Value at Risk	Substation	33° 23.644' N 105° 47.151' W

