

# Pilot

6/26/2024 Day  
South Fork  
NM-MEA-000382

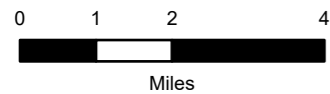
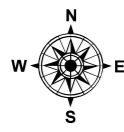
17,569 acres at 6/24/2024 2358hr

# Salt

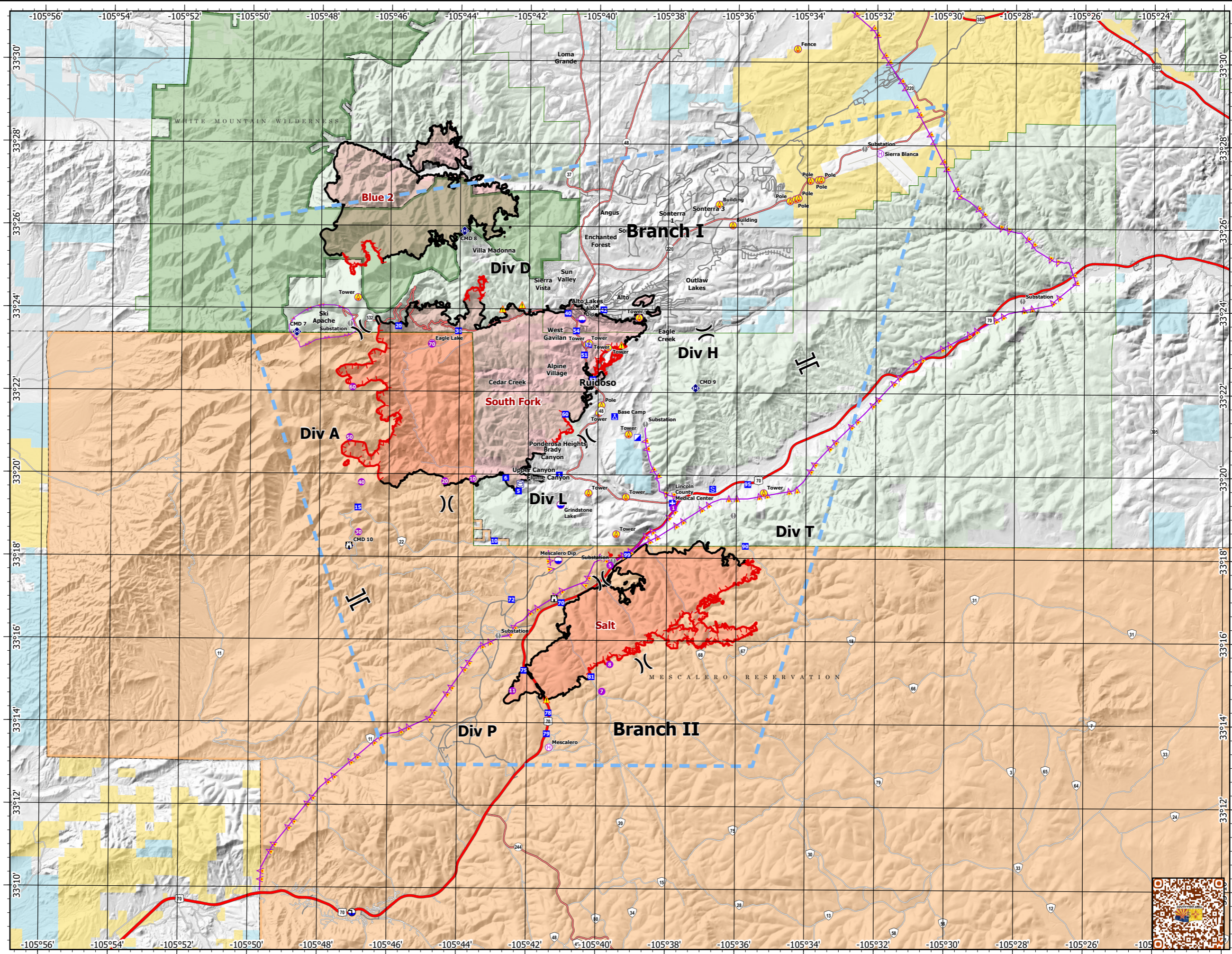
NM-MEA-000385

7,939 acres at 6/24/2024 2358hr

- Aerial Hazard
- Helispot
- Helibase
- Division Break
- Branch Break
- Medical
- Incident Command Post
- Drop Point
- Camp
- Staging Area
- Lookout
- Value at Risk
- Repeater
- Hazard
- Dip Site
- Draft Site
- Aerial Hazard
- Temporary Flight Restriction
- Contained
- Uncontained
- Wildfire Daily Fire Perimeter
- FS Wilderness Boundary
- Forest Service Land
- BLM
- State Lands
- Primary Highway
- Secondary Highway
- Secondary Paved
- State Road (Dirt)
- Secondary Dirt



1:160,000 | SWIMT5 GISS | 6/25/2024 2030  
Acres from Mixed Methods  
North American 1983 Datum. Lat/Long Grid



Incident Name	FC Point Type	Label	Comments	Latitude WGS84 DDM	Longitude WGS84 DDM	Incident Name	FC Point Type	Label	Comments	Latitude WGS84 DDM	Longitude WGS84 DDM
Salt	Drop Point	70		33° 16.926' N	105° 41.026' W	South Fork	Dip Site	Mescalero Dip	Hazards: Zip line across the lake. Ownership MEA	33° 17.952' N	105° 41.119' W
Salt	Drop Point	72	DropPoint for Ambo	33° 16.995' N	105° 42.456' W	South Fork	Draft Site		Overhead stand pipe	33° 09.410' N	105° 46.981' W
Salt	Drop Point	75		33° 15.286' N	105° 42.089' W	South Fork	Drop Point	1		33° 20.011' N	105° 41.103' W
Salt	Drop Point	78		33° 14.261' N	105° 41.385' W	South Fork	Drop Point	10		33° 18.410' N	105° 42.959' W
Salt	Drop Point	79		33° 13.756' N	105° 41.429' W	South Fork	Drop Point	15	Parking/ Staging	33° 19.206' N	105° 46.893' W
Salt	Drop Point	81		33° 15.143' N	105° 40.151' W	South Fork	Drop Point	20	DIVS D DROP POINT	33° 23.593' N	105° 45.760' W
Salt	Drop Point	90		33° 18.315' N	105° 35.740' W	South Fork	Drop Point	30	Division Delta	33° 23.480' N	105° 44.036' W
Salt	Drop Point	95		33° 19.807' N	105° 35.677' W	South Fork	Drop Point	40	DIVS DELTA SHELL STATION HIGHWAY 48 and Ski Run RD	33° 23.919' N	105° 40.879' W
Salt	Drop Point	99		33° 18.091' N	105° 39.134' W	South Fork	Drop Point	42	Division Delta Alto Lakes Country Club	33° 24.010' N	105° 39.851' W
Salt	Hazard		Down power lines	33° 14.582' N	105° 41.430' W	South Fork	Drop Point	5		33° 19.617' N	105° 42.276' W
Salt	Helibase	Mescalero	BIA Mescalero Helibase - 3 pads, type 2 Approved	33° 13.428' N	105° 41.355' W	South Fork	Drop Point	50		33° 22.321' N	105° 40.157' W
Salt	Helispot	11	Approved Type 2 H-11	33° 14.790' N	105° 42.413' W	South Fork	Drop Point	51		33° 22.918' N	105° 40.401' W
Salt	Helispot	5	Approved type 3	33° 17.837' N	105° 39.626' W	South Fork	Drop Point	52		33° 23.165' N	105° 40.286' W
Salt	Helispot	7	Approved H-7	33° 14.787' N	105° 39.843' W	South Fork	Drop Point	54		33° 23.495' N	105° 40.638' W
Salt	Helispot	8	Approved Type 2	33° 15.442' N	105° 39.619' W	South Fork	Drop Point	6		33° 19.940' N	105° 42.644' W
Salt	Lookout		Human repeater location. Reaches travel center, DP75, S. snow canyon.	33° 17.023' N	105° 41.230' W	South Fork	Drop Point	60		33° 21.481' N	105° 40.941' W
Salt	Staging Area		Ruidoso downs. Large enough for many low boys	33° 19.692' N	105° 36.687' W	South Fork	Hazard			33° 24.015' N	105° 42.763' W
Salt	Value at Risk		Surface black poly water pipeline	33° 19.053' N	105° 36.087' W	South Fork	Hazard			33° 24.116' N	105° 42.206' W
South Fork	Aerial Hazard	Building		33° 26.067' N	105° 36.144' W	South Fork	Hazard		Down power line	33° 23.162' N	105° 39.336' W
South Fork	Aerial Hazard	Building		33° 26.568' N	105° 36.536' W	South Fork	Helibase	Sierra Blanca	"South Fork Helibase" Sierra Blanca Airport	33° 27.818' N	105° 31.911' W
South Fork	Aerial Hazard	Fence		33° 30.335' N	105° 34.303' W	South Fork	Helispot	1	Call ER direct if landing (security will assist on road guard) 575-630-4258	33° 19.227' N	105° 37.816' W
South Fork	Aerial Hazard	Pole		33° 21.700' N	105° 39.900' W	South Fork	Helispot	10	Approved type 3	33° 19.910' N	105° 43.594' W
South Fork	Aerial Hazard	Pole		33° 26.656' N	105° 34.498' W	South Fork	Helispot	20	Approved for type 3	33° 19.848' N	105° 44.394' W
South Fork	Aerial Hazard	Pole		33° 26.703' N	105° 34.339' W	South Fork	Helispot	30		33° 18.607' N	105° 46.874' W
South Fork	Aerial Hazard	Pole		33° 26.727' N	105° 34.258' W	South Fork	Helispot	40	Type 2 and 3 approved. Can also be used as a sling site	33° 19.813' N	105° 46.796' W
South Fork	Aerial Hazard	Pole		33° 27.151' N	105° 33.919' W	South Fork	Helispot	50	Type 2 and 3 approved	33° 20.899' N	105° 47.145' W
South Fork	Aerial Hazard	Pole		33° 27.172' N	105° 33.679' W	South Fork	Helispot	60		33° 22.112' N	105° 47.068' W
South Fork	Aerial Hazard	Pole		33° 27.177' N	105° 33.608' W	South Fork	Helispot	70	Type 2 approved	33° 23.157' N	105° 44.793' W
South Fork	Aerial Hazard	Tower		33° 18.587' N	105° 39.455' W	South Fork	Incident Command Post			33° 20.925' N	105° 38.860' W
South Fork	Aerial Hazard	Tower		33° 19.483' N	105° 39.183' W	South Fork	Lookout		Lookout Tower	33° 18.283' N	105° 47.145' W
South Fork	Aerial Hazard	Tower		33° 19.578' N	105° 40.262' W	South Fork	Medical	Lincoln County Medical Center		33° 19.346' N	105° 37.845' W
South Fork	Aerial Hazard	Tower		33° 19.600' N	105° 35.217' W	South Fork	Repeater	CMD 10		33° 18.272' N	105° 47.136' W
South Fork	Aerial Hazard	Tower		33° 21.000' N	105° 39.117' W	South Fork	Repeater	CMD 7		33° 23.433' N	105° 48.688' W
South Fork	Aerial Hazard	Tower		33° 21.516' N	105° 39.972' W	South Fork	Repeater	CMD 8		33° 25.896' N	105° 43.875' W
South Fork	Aerial Hazard	Tower		33° 23.093' N	105° 39.722' W	South Fork	Repeater	CMD 9		33° 22.128' N	105° 37.197' W
South Fork	Aerial Hazard	Tower		33° 23.167' N	105° 40.333' W	South Fork	Repeater	CMD 9		33° 36.373' N	105° 21.616' W
South Fork	Aerial Hazard	Tower		33° 23.183' N	105° 40.283' W	South Fork	Value at Risk	Substation		33° 21.248' N	105° 38.633' W
South Fork	Aerial Hazard	Tower		33° 23.200' N	105° 40.267' W	South Fork	Value at Risk	Substation		33° 24.265' N	105° 27.786' W
South Fork	Aerial Hazard	Tower		33° 23.818' N	105° 38.831' W	South Fork	Value at Risk	Substation		33° 17.941' N	105° 39.540' W
South Fork	Aerial Hazard	Tower		33° 24.275' N	105° 46.930' W	South Fork	Value at Risk	Substation		33° 16.119' N	105° 42.831' W
South Fork	Aerial Hazard	Tower		33° 32.889' N	105° 36.137' W	South Fork	Value at Risk	Substation		33° 27.932' N	105° 32.357' W
South Fork	Camp	Base Camp		33° 21.431' N	105° 39.521' W	South Fork	Value at Risk	Substation		33° 23.644' N	105° 47.151' W
South Fork	Dip Site	Alto Dip	Hazard power lines on east and west ends	33° 23.777' N	105° 40.478' W						
South Fork	Dip Site	Eagle Lake	Ownership MEA	33° 23.173' N	105° 44.795' W						
South Fork	Dip Site	Grindstone Lake		33° 19.293' N	105° 41.057' W						