

# Air Ops

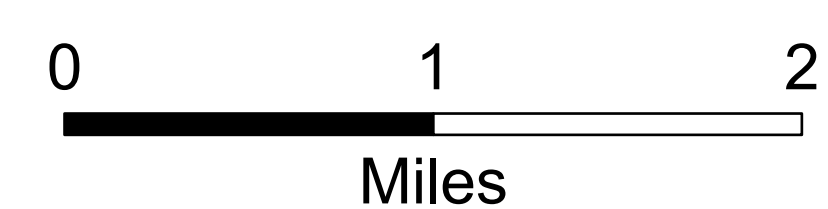
7/01/2024 Day  
South Fork  
NM-MEA-000382

17,569 acres at 6/24/2024 2358hr

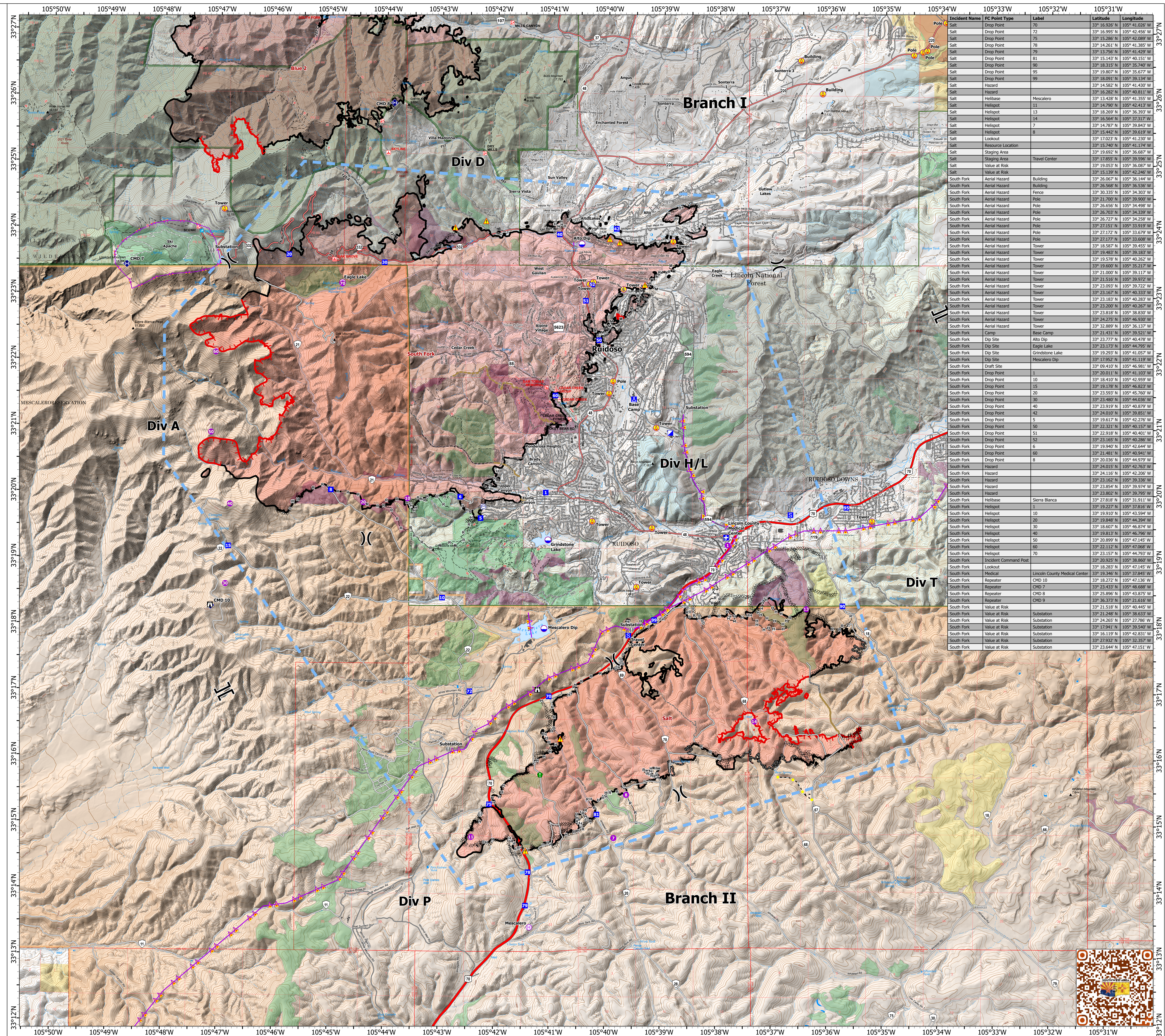
Salt  
NM-MEA-000385

7,939 acres at 6/24/2024 2358hr

- Structure
- Aerial Hazard
- Helispot
- Helibase
- Division Break
- Branch Break
- Medical
- Incident Command Post
- Drop Point
- Camp
- Staging Area
- Lookout
- Value at Risk
- Other
- Resource Location
- Repeater
- Hazard
- Dip Site
- Completed Dozer Line
- Completed Hand Line
- Completed Mixed Construction Line
- Completed Road as Line
- Access Route
- Highlighted Feature
- Other
- Repair Line
- Road Repair
- Aerial Hazard
- Temporary Flight Restriction
- Contained
- Uncontained
- Wildfire Daily Fire Perimeter
- Primary Highway
- Secondary Highway
- Secondary Paved
- Secondary Dirt
- Paved
- Gravel Road
- Dirt Road
- Unimproved Road
- Forest Service Roads Closed
- FS Wilderness Boundary
- Forest Service Land
- Bureau of Land Management Lands
- State Lands
- USFS Historic Fire Perimeters
- Interagency Fuels Treatments
- Fire - Broadcast Burn
- Fire - Other
- Mechanical
- Other



1:33,000 | SW IMT 5 | 6/30/2024 1940  
Acres from Mixed Methods  
North American 1983 Datum. LatLong Grid



| Incident Name | FC Point Type     | Label                         | Latitude      | Longitude      |
|---------------|-------------------|-------------------------------|---------------|----------------|
| Salt          | Drop Point        | 70                            | 33° 16.926' N | 105° 41.026' W |
| Salt          | Drop Point        | 72                            | 33° 16.995' N | 105° 42.456' W |
| Salt          | Drop Point        | 75                            | 33° 15.286' N | 105° 42.889' W |
| Salt          | Drop Point        | 78                            | 33° 14.261' N | 105° 41.385' W |
| Salt          | Drop Point        | 79                            | 33° 13.256' N | 105° 41.429' W |
| Salt          | Drop Point        | 81                            | 33° 15.143' N | 105° 40.151' W |
| Salt          | Drop Point        | 90                            | 33° 18.315' N | 105° 35.740' W |
| Salt          | Drop Point        | 95                            | 33° 19.807' N | 105° 35.677' W |
| Salt          | Drop Point        | 99                            | 33° 18.830' N | 105° 39.244' W |
| Salt          | Hazard            | 7                             | 33° 14.582' N | 105° 41.430' W |
| Salt          | Hazard            | 7                             | 33° 16.282' N | 105° 40.811' W |
| Salt          | Helibase          | Mescalero                     | 33° 13.428' N | 105° 41.355' W |
| Salt          | Helispot          | 11                            | 33° 14.790' N | 105° 42.413' W |
| Salt          | Helispot          | 13                            | 33° 18.269' N | 105° 36.393' W |
| Salt          | Helispot          | 14                            | 33° 16.564' N | 105° 37.377' W |
| Salt          | Helispot          | 17                            | 33° 14.787' N | 105° 39.843' W |
| Salt          | Helispot          | 8                             | 33° 15.442' N | 105° 39.619' W |
| Salt          | Lookout           | 7                             | 33° 17.023' N | 105° 41.230' W |
| Salt          | Resource Location |                               | 33° 15.740' N | 105° 41.174' W |
| Salt          | Staging Area      | Travel Center                 | 33° 19.692' N | 105° 36.687' W |
| Salt          | Value at Risk     |                               | 33° 19.053' N | 105° 36.087' W |
| Salt          | Value at Risk     |                               | 33° 15.139' N | 105° 42.246' W |
| South Fork    | Aerial Hazard     | Building                      | 33° 26.067' N | 105° 36.144' W |
| South Fork    | Aerial Hazard     | Building                      | 33° 26.588' N | 105° 36.536' W |
| South Fork    | Aerial Hazard     | Fence                         | 33° 30.335' N | 105° 34.303' W |
| South Fork    | Aerial Hazard     | Pole                          | 33° 21.700' N | 105° 39.920' W |
| South Fork    | Aerial Hazard     | Pole                          | 33° 26.656' N | 105° 34.988' W |
| South Fork    | Aerial Hazard     | Pole                          | 33° 26.703' N | 105° 34.339' W |
| South Fork    | Aerial Hazard     | Pole                          | 33° 26.727' N | 105° 34.258' W |
| South Fork    | Aerial Hazard     | Pole                          | 33° 27.151' N | 105° 33.919' W |
| South Fork    | Aerial Hazard     | Pole                          | 33° 27.172' N | 105° 33.679' W |
| South Fork    | Aerial Hazard     | Pole                          | 33° 27.177' N | 105° 33.598' W |
| South Fork    | Aerial Hazard     | Tower                         | 33° 18.587' N | 105° 39.455' W |
| South Fork    | Aerial Hazard     | Tower                         | 33° 19.483' N | 105° 39.183' W |
| South Fork    | Aerial Hazard     | Tower                         | 33° 19.578' N | 105° 40.262' W |
| South Fork    | Aerial Hazard     | Tower                         | 33° 19.600' N | 105° 35.217' W |
| South Fork    | Aerial Hazard     | Tower                         | 33° 21.000' N | 105° 39.117' W |
| South Fork    | Aerial Hazard     | Tower                         | 33° 21.161' N | 105° 39.972' W |
| South Fork    | Aerial Hazard     | Tower                         | 33° 23.093' N | 105° 39.722' W |
| South Fork    | Aerial Hazard     | Tower                         | 33° 23.167' N | 105° 40.333' W |
| South Fork    | Aerial Hazard     | Tower                         | 33° 23.183' N | 105° 40.283' W |
| South Fork    | Aerial Hazard     | Tower                         | 33° 23.200' N | 105° 40.267' W |
| South Fork    | Aerial Hazard     | Tower                         | 33° 23.818' N | 105° 38.830' W |
| South Fork    | Aerial Hazard     | Tower                         | 33° 24.275' N | 105° 46.830' W |
| South Fork    | Aerial Hazard     | Tower                         | 33° 32.889' N | 105° 36.137' W |
| South Fork    | Camp              | Base Camp                     | 33° 21.431' N | 105° 39.521' W |
| South Fork    | Dip Site          | Alto Dip                      | 33° 23.777' N | 105° 40.478' W |
| South Fork    | Dip Site          | Eagle Lake                    | 33° 23.173' N | 105° 44.795' W |
| South Fork    | Dip Site          | Grindstone Lake               | 33° 19.293' N | 105° 41.057' W |
| South Fork    | Dip Site          | Mescalero Dip                 | 33° 09.410' N | 105° 46.981' W |
| South Fork    | Drop Point        | 1                             | 33° 20.011' N | 105° 41.103' W |
| South Fork    | Drop Point        | 10                            | 33° 18.410' N | 105° 42.959' W |
| South Fork    | Drop Point        | 15                            | 33° 19.178' N | 105° 46.823' W |
| South Fork    | Drop Point        | 20                            | 33° 23.593' N | 105° 45.760' W |
| South Fork    | Drop Point        | 20                            | 33° 23.489' N | 105° 44.236' W |
| South Fork    | Drop Point        | 40                            | 33° 23.919' N | 105° 40.879' W |
| South Fork    | Drop Point        | 42                            | 33° 24.010' N | 105° 39.851' W |
| South Fork    | Drop Point        | 5                             | 33° 19.617' N | 105° 42.276' W |
| South Fork    | Drop Point        | 50                            | 33° 22.321' N | 105° 40.157' W |
| South Fork    | Drop Point        | 51                            | 33° 22.918' N | 105° 40.401' W |
| South Fork    | Drop Point        | 52                            | 33° 23.165' N | 105° 40.266' W |
| South Fork    | Drop Point        | 6                             | 33° 19.940' N | 105° 42.644' W |
| South Fork    | Drop Point        | 60                            | 33° 21.481' N | 105° 40.941' W |
| South Fork    | Drop Point        | 8                             | 33° 20.036' N | 105° 44.979' W |
| South Fork    | Hazard            |                               | 33° 24.015' N | 105° 42.763' W |
| South Fork    | Hazard            |                               | 33° 24.116' N | 105° 42.206' W |
| South Fork    | Hazard            |                               | 33° 23.162' N | 105° 39.326' W |
| South Fork    | Hazard            |                               | 33° 23.854' N | 105° 39.974' W |
| South Fork    | Hazard            | Sierra Blanca                 | 33° 23.802' N | 105° 39.795' W |
| South Fork    | Helibase          |                               | 33° 27.818' N | 105° 31.911' W |
| South Fork    | Helispot          | 1                             | 33° 19.227' N | 105° 37.816' W |
| South Fork    | Helispot          | 10                            | 33° 19.910' N | 105° 41.119' W |
| South Fork    | Helispot          | 20                            | 33° 19.848' N | 105° 44.394' W |
| South Fork    | Helispot          | 30                            | 33° 18.607' N | 105° 46.874' W |
| South Fork    | Helispot          | 40                            | 33° 19.813' N | 105° 46.796' W |
| South Fork    | Helispot          | 50                            | 33° 20.899' N | 105° 47.145' W |
| South Fork    | Helispot          | 60                            | 33° 22.112' N | 105° 47.068' W |
| South Fork    | Helispot          | 70                            | 33° 23.157' N | 105° 44.793' W |
| South Fork    | Helispot          | 80                            | 33° 20.929' N | 105° 38.869' W |
| South Fork    | Lookout           |                               | 33° 18.283' N | 105° 47.145' W |
| South Fork    | Medical           | Lincoln County Medical Center | 33° 19.346' N | 105° 37.845' W |
| South Fork    | Repeater          | CMD 10                        | 33° 18.272' N | 105° 47.136' W |
| South Fork    | Repeater          | CMD 7                         | 33° 23.433' N | 105° 48.688' W |
| South Fork    | Repeater          | CMD 8                         | 33° 25.966' N | 105° 43.715' W |
| South Fork    | Repeater          | CMD 9                         | 33° 36.373' N | 105° 21.616' W |
| South Fork    | Value at Risk     |                               | 33° 21.518' N | 105° 40.445' W |
| South Fork    | Value at Risk     | Substation                    | 33° 21.248' N | 105° 38.633' W |
| South Fork    | Value at Risk     | Substation                    | 33° 24.265' N | 105° 27.786' W |
| South Fork    | Value at Risk     | Substation                    | 33° 17.941' N | 105° 39.540' W |
| South Fork    | Value at Risk     | Substation                    | 33° 16.119' N | 105° 42.831' W |
| South Fork    | Value at Risk     | Substation                    | 33° 22.932' N | 105° 32.327' W |
| South Fork    | Value at Risk     | Substation                    | 33° 23.644' N | 105° 47.151' W |

