

Medical Transportation

7/01/2024 Day
South Fork
NM-MEA-000382

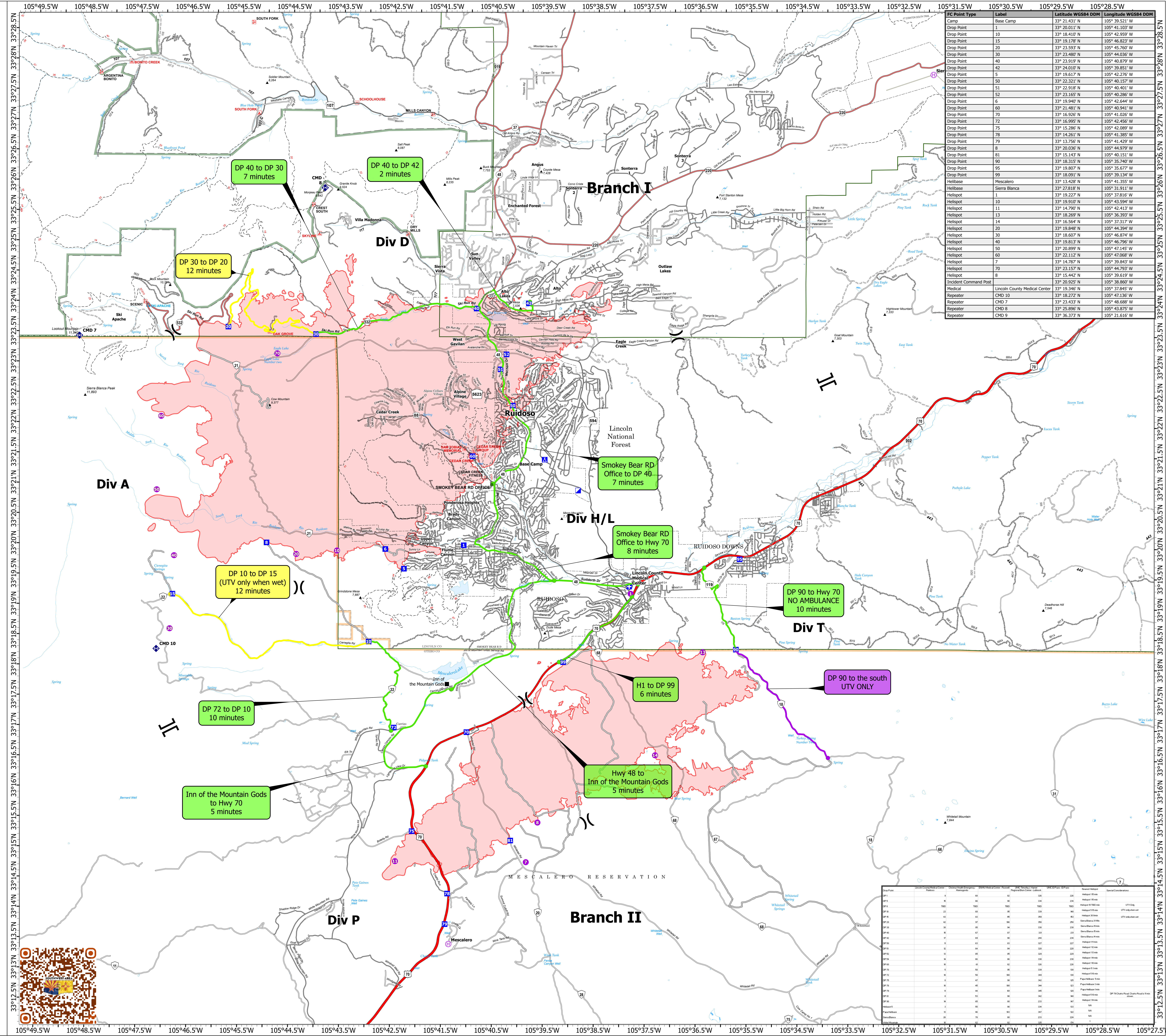
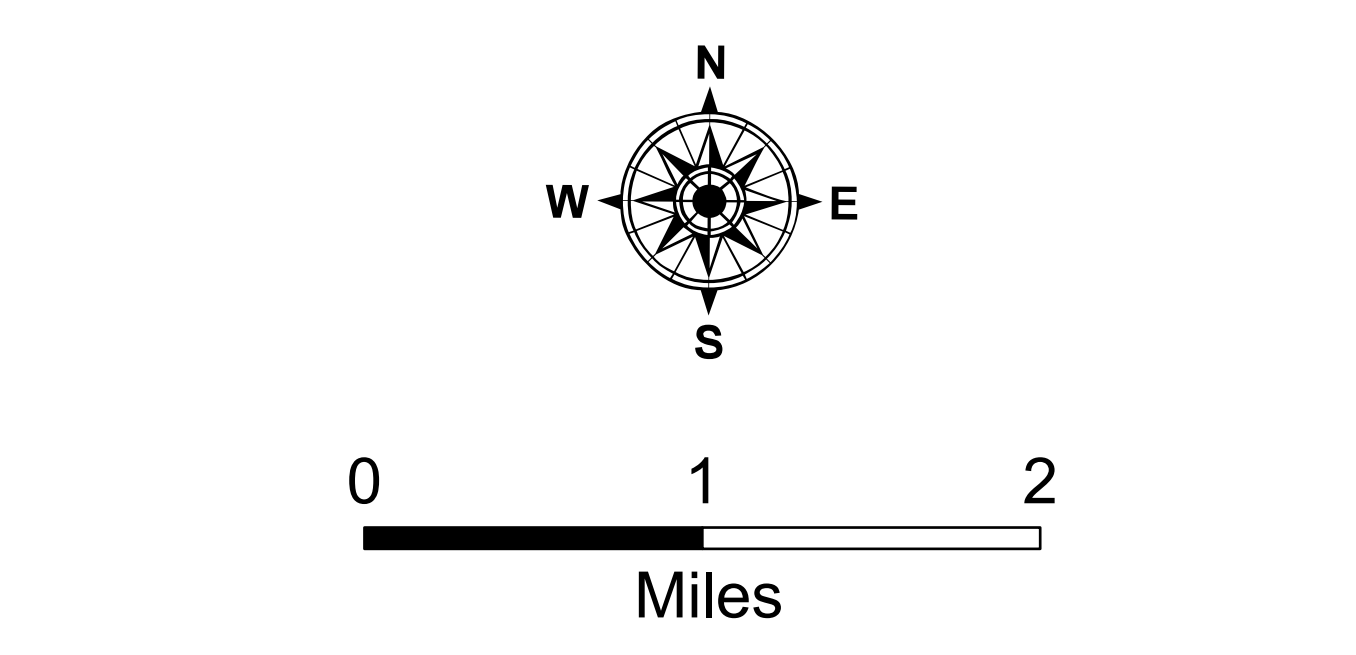
17,569 acres at 6/24/2024 2358hr

Salt
NM-MEA-000385

7,939 acres at 6/24/2024 2358hr

- Helispot
- ⊕ Helibase
- ⌘ Division Break
- ⌚ Branch Break
- + Medical
- ⚡ Incident Command Post
- Drop Point
- ⛑ Camp
- ⚡ Repeater
- Access Route
- Wildfire Daily Fire Perimeter
- e Ranger District Office
- Primary Highway
- Secondary Highway
- Secondary Paved
- Secondary Dirt
- ~ Paved
- ~ Gravel Road
- ~ Dirt Road
- ~ Unimproved Road
- ~ Forest Service Roads Closed
- FS Wilderness Boundary

- ### Medical Transport Times
- ~ 0-10 Minutes
 - ~ 10-20 Minutes
 - ~ 20-30 Minutes
 - ~ 30+ Minutes
 - ~ UTV Only



FC Point Type	Label	Latitude WGS84 DDM	Longitude WGS84 DDM
Camp	Base Camp	33° 21.431' N	105° 39.521' W
Drop Point	1	33° 20.011' N	105° 41.103' W
Drop Point	10	33° 18.410' N	105° 42.959' W
Drop Point	15	33° 19.178' N	105° 46.823' W
Drop Point	20	33° 23.593' N	105° 45.760' W
Drop Point	30	33° 23.480' N	105° 44.036' W
Drop Point	40	33° 23.919' N	105° 40.879' W
Drop Point	42	33° 24.010' N	105° 39.851' W
Drop Point	5	33° 19.617' N	105° 42.276' W
Drop Point	50	33° 22.321' N	105° 40.157' W
Drop Point	51	33° 22.918' N	105° 40.401' W
Drop Point	52	33° 23.165' N	105° 40.286' W
Drop Point	6	33° 19.940' N	105° 42.644' W
Drop Point	60	33° 21.481' N	105° 40.941' W
Drop Point	70	33° 19.926' N	105° 41.026' W
Drop Point	72	33° 16.995' N	105° 42.456' W
Drop Point	75	33° 15.286' N	105° 42.089' W
Drop Point	78	33° 14.261' N	105° 41.385' W
Drop Point	79	33° 13.756' N	105° 41.429' W
Drop Point	8	33° 20.036' N	105° 44.979' W
Drop Point	81	33° 15.143' N	105° 40.151' W
Drop Point	90	33° 18.315' N	105° 35.740' W
Drop Point	95	33° 19.807' N	105° 35.677' W
Drop Point	99	33° 18.091' N	105° 39.134' W
Helibase	Mescalero	33° 13.428' N	105° 41.355' W
Helibase	Sierra Blanca	33° 22.818' N	105° 31.911' W
Helispot	1	33° 19.227' N	105° 37.816' W
Helispot	10	33° 19.910' N	105° 42.594' W
Helispot	11	33° 14.790' N	105° 42.413' W
Helispot	13	33° 18.269' N	105° 36.393' W
Helispot	14	33° 16.564' N	105° 37.317' W
Helispot	20	33° 19.849' N	105° 44.944' W
Helispot	30	33° 18.607' N	105° 46.874' W
Helispot	40	33° 19.813' N	105° 46.796' W
Helispot	50	33° 20.899' N	105° 47.145' W
Helispot	60	33° 22.112' N	105° 47.068' W
Helispot	7	33° 14.787' N	105° 39.843' W
Helispot	70	33° 23.157' N	105° 44.793' W
Helispot	8	33° 15.442' N	105° 39.619' W
Incident Command Post		33° 20.925' N	105° 38.865' W
Medical	Lincoln County Medical Center	33° 19.346' N	105° 37.845' W
Repeater	CMD 10	33° 18.272' N	105° 47.126' W
Repeater	CMD 7	33° 23.433' N	105° 48.686' W
Repeater	CMD 8	33° 25.096' N	105° 42.872' W
Repeater	CMD 9	33° 36.373' N	105° 21.616' W

Drop Point	Label	Latitude WGS84 DDM	Longitude WGS84 DDM	Transport Time	Notes
DP 10	DP 10	33° 19.617' N	105° 42.276' W	12 minutes	UTV only when wet
DP 15	DP 15	33° 19.178' N	105° 46.823' W	15 minutes	UTV only when wet
DP 20	DP 20	33° 23.593' N	105° 45.760' W	20 minutes	
DP 30	DP 30	33° 23.480' N	105° 44.036' W	7 minutes	
DP 40	DP 40	33° 23.919' N	105° 40.879' W	2 minutes	
DP 42	DP 42	33° 24.010' N	105° 39.851' W	2 minutes	
DP 50	DP 50	33° 22.321' N	105° 40.157' W	12 minutes	
DP 51	DP 51	33° 22.918' N	105° 40.401' W	12 minutes	
DP 52	DP 52	33° 23.165' N	105° 40.286' W	12 minutes	
DP 60	DP 60	33° 21.481' N	105° 40.941' W	12 minutes	
DP 70	DP 70	33° 19.926' N	105° 41.026' W	12 minutes	
DP 72	DP 72	33° 16.995' N	105° 42.456' W	12 minutes	
DP 75	DP 75	33° 15.286' N	105° 42.089' W	12 minutes	
DP 78	DP 78	33° 14.261' N	105° 41.385' W	12 minutes	
DP 79	DP 79	33° 13.756' N	105° 41.429' W	12 minutes	
DP 81	DP 81	33° 15.143' N	105° 40.151' W	12 minutes	
DP 90	DP 90	33° 18.315' N	105° 35.740' W	10 minutes	NO AMBULANCE
DP 95	DP 95	33° 19.807' N	105° 35.677' W	10 minutes	NO AMBULANCE
DP 99	DP 99	33° 18.091' N	105° 39.134' W	10 minutes	NO AMBULANCE
DP 10	DP 10	33° 19.617' N	105° 42.276' W	12 minutes	UTV only when wet
DP 15	DP 15	33° 19.178' N	105° 46.823' W	15 minutes	UTV only when wet
DP 20	DP 20	33° 23.593' N	105° 45.760' W	20 minutes	
DP 30	DP 30	33° 23.480' N	105° 44.036' W	7 minutes	
DP 40	DP 40	33° 23.919' N	105° 40.879' W	2 minutes	
DP 42	DP 42	33° 24.010' N	105° 39.851' W	2 minutes	
DP 50	DP 50	33° 22.321' N	105° 40.157' W	12 minutes	
DP 51	DP 51	33° 22.918' N	105° 40.401' W	12 minutes	
DP 52	DP 52	33° 23.165' N	105° 40.286' W	12 minutes	
DP 60	DP 60	33° 21.481' N	105° 40.941' W	12 minutes	
DP 70	DP 70	33° 19.926' N	105° 41.026' W	12 minutes	
DP 72	DP 72	33° 16.995' N	105° 42.456' W	12 minutes	
DP 75	DP 75	33° 15.286' N	105° 42.089' W	12 minutes	
DP 78	DP 78	33° 14.261' N	105° 41.385' W	12 minutes	
DP 79	DP 79	33° 13.756' N	105° 41.429' W	12 minutes	
DP 81	DP 81	33° 15.143' N	105° 40.151' W	12 minutes	
DP 90	DP 90	33° 18.315' N	105° 35.740' W	10 minutes	NO AMBULANCE
DP 95	DP 95	33° 19.807' N	105° 35.677' W	10 minutes	NO AMBULANCE
DP 99	DP 99	33° 18.091' N	105° 39.134' W	10 minutes	NO AMBULANCE