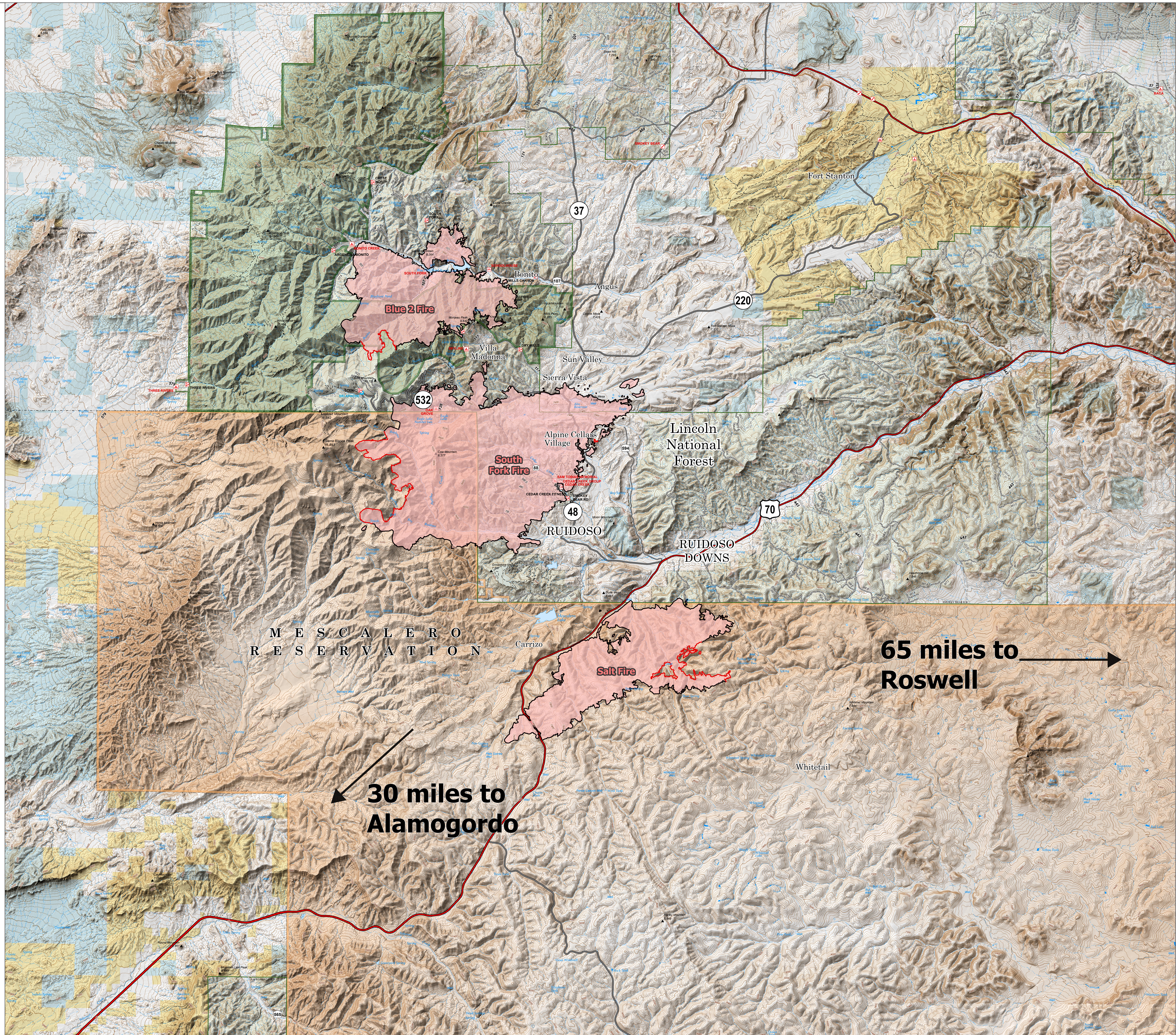


# Public Information

7/01/2024 Day  
 South Fork  
 NM-MEA-000382  
 17,569 acres at 6/24/2024 2358hr

Salt  
 NM-MEA-000385  
 7,939 acres at 6/24/2024 2358hr

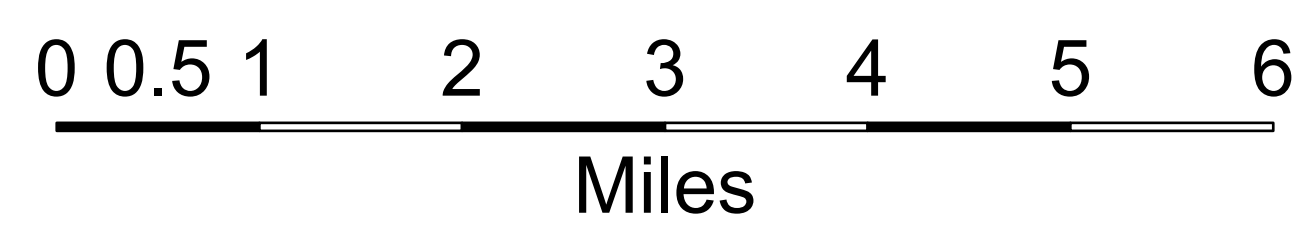
- Contained
- Uncontained
- Primary Highway
- Secondary Highway
- State Road (Dirt)
- Tribal Lands
- USFS Roadless Areas
- USFS Wilderness
- Forest Service Land
- Bureau of Land Management Lands
- State Lands
- Wildfire Daily Fire Perimeter



M E S C A L E R O  
 R E S E R V A T I O N

**65 miles to Roswell** →

↙ **30 miles to Alamogordo**



1:60,000 | SW IMT 5 | 6/30/2024 1948  
 Acres from Mixed Methods  
 North American 1983 Datum, LatLong Grid