

Air Ops

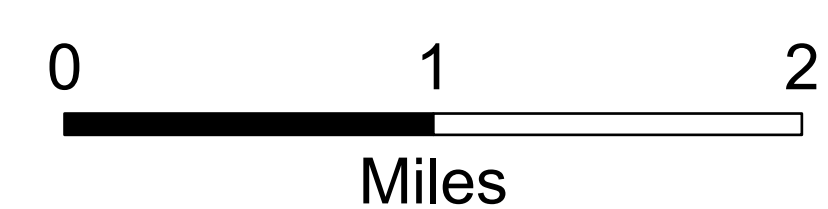
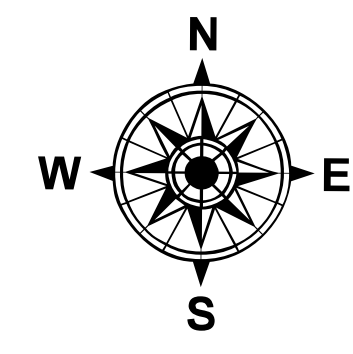
7/02/2024 Day
South Fork
NM-MEA-000382

17,569 acres at 6/24/2024 2358hr

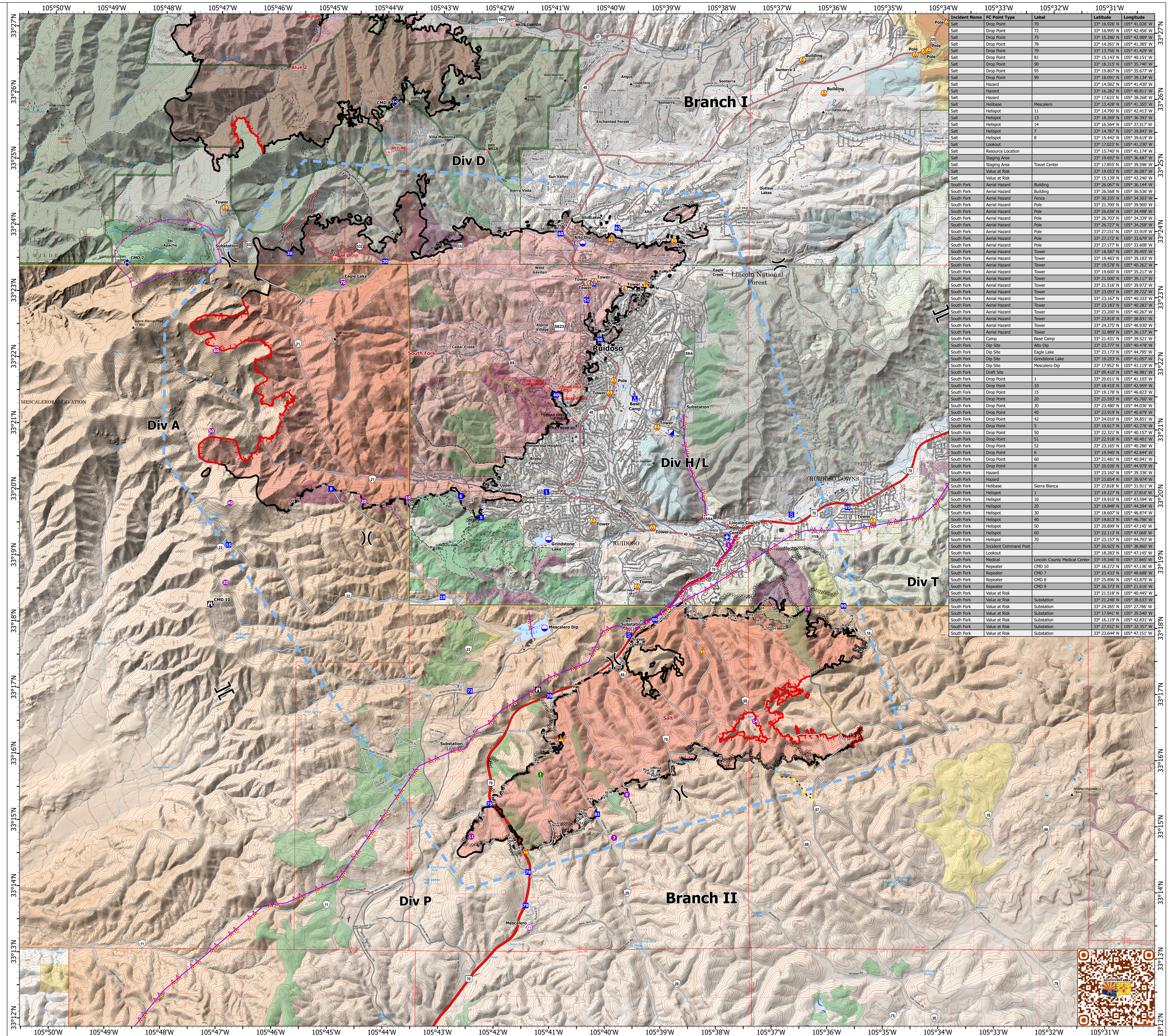
Salt
NM-MEA-000385

7,939 acres at 6/24/2024 2358hr

- Structure
- Aerial Hazard
- Helispot
- Helibase
- Division Break
- Branch Break
- Medical
- Incident Command Post
- Drop Point
- Camp
- Staging Area
- Lookout
- Value at Risk
- Other
- Resource Location
- Repeater
- Hazard
- Dip Site
- Completed Dozer Line
- Completed Hand Line
- Completed Mixed Construction Line
- Completed Road as Line
- Access Route
- Highlighted Feature
- Other
- Repair Line
- Road Repair
- Aerial Hazard
- Temporary Flight Restriction
- Contained
- Uncontained
- Wildfire Daily Fire Perimeter
- Primary Highway
- Secondary Highway
- Secondary Paved
- Secondary Dirt
- Paved
- Gravel Road
- Dirt Road
- Unimproved Road
- Forest Service Roads Closed
- FS Wilderness Boundary
- Forest Service Land
- Bureau of Land Management Lands
- State Lands
- USFS Historic Fire Perimeters
- Interagency Fuels Treatments
- Fire - Broadcast Burn
- Fire - Other
- Mechanical
- Other



1:33,000 | SW IMT 5 | 7/1/2024 2134
Acres from Mixed Methods
North American 1983 Datum. LatLong Grid



Incident Name	FC Point Type	Label	Latitude	Longitude
Salt	Drop Point	70	33° 16.926' N	105° 41.026' W
Salt	Drop Point	72	33° 16.995' N	105° 42.456' W
Salt	Drop Point	75	33° 15.286' N	105° 42.889' W
Salt	Drop Point	78	33° 14.251' N	105° 41.385' W
Salt	Drop Point	79	33° 13.756' N	105° 41.429' W
Salt	Drop Point	81	33° 15.143' N	105° 40.151' W
Salt	Drop Point	90	33° 18.315' N	105° 35.740' W
Salt	Drop Point	95	33° 19.807' N	105° 35.677' W
Salt	Drop Point	99	33° 18.839' N	105° 39.240' W
Salt	Hazard	11	33° 14.582' N	105° 41.430' W
Salt	Hazard	14	33° 16.282' N	105° 40.811' W
Salt	Hazard	13	33° 17.633' N	105° 38.268' W
Salt	Helibase	Mescalero	33° 13.428' N	105° 41.355' W
Salt	Helispot	11	33° 14.790' N	105° 42.413' W
Salt	Helispot	13	33° 16.859' N	105° 36.993' W
Salt	Helispot	14	33° 16.554' N	105° 37.317' W
Salt	Helispot	17	33° 14.787' N	105° 39.843' W
Salt	Helispot	8	33° 15.442' N	105° 39.619' W
Salt	Lookout	1	33° 17.023' N	105° 41.230' W
Salt	Resource Location		33° 15.740' N	105° 41.174' W
Salt	Staging Area		33° 19.892' N	105° 36.807' W
Salt	Staging Area	Travel Center	33° 17.855' N	105° 39.596' W
Salt	Value at Risk		33° 19.053' N	105° 36.087' W
Salt	Value at Risk		33° 15.139' N	105° 42.246' W
South Fork	Aerial Hazard	Building	33° 26.067' N	105° 36.144' W
South Fork	Aerial Hazard	Building	33° 26.568' N	105° 36.536' W
South Fork	Aerial Hazard	Fence	33° 30.355' N	105° 34.303' W
South Fork	Aerial Hazard	Pole	33° 21.700' N	105° 39.900' W
South Fork	Aerial Hazard	Pole	33° 26.656' N	105° 34.988' W
South Fork	Aerial Hazard	Pole	33° 26.703' N	105° 34.339' W
South Fork	Aerial Hazard	Pole	33° 26.727' N	105° 34.258' W
South Fork	Aerial Hazard	Pole	33° 27.151' N	105° 33.919' W
South Fork	Aerial Hazard	Pole	33° 21.172' N	105° 39.379' W
South Fork	Aerial Hazard	Pole	33° 27.177' N	105° 33.608' W
South Fork	Aerial Hazard	Tower	33° 18.587' N	105° 39.455' W
South Fork	Aerial Hazard	Tower	33° 19.483' N	105° 39.183' W
South Fork	Aerial Hazard	Tower	33° 19.578' N	105° 40.262' W
South Fork	Aerial Hazard	Tower	33° 19.600' N	105° 35.217' W
South Fork	Aerial Hazard	Tower	33° 21.000' N	105° 39.177' W
South Fork	Aerial Hazard	Tower	33° 21.516' N	105° 39.972' W
South Fork	Aerial Hazard	Tower	33° 23.093' N	105° 39.722' W
South Fork	Aerial Hazard	Tower	33° 23.167' N	105° 40.333' W
South Fork	Aerial Hazard	Tower	33° 23.183' N	105° 40.283' W
South Fork	Aerial Hazard	Tower	33° 23.200' N	105° 40.267' W
South Fork	Aerial Hazard	Tower	33° 23.818' N	105° 38.331' W
South Fork	Aerial Hazard	Tower	33° 24.275' N	105° 46.930' W
South Fork	Aerial Hazard	Tower	33° 32.889' N	105° 36.137' W
South Fork	Camp	Base Camp	33° 21.431' N	105° 39.521' W
South Fork	Dip Site	Alto Dip	33° 23.777' N	105° 40.478' W
South Fork	Dip Site	Eagle Lake	33° 23.173' N	105° 44.795' W
South Fork	Dip Site	Grindstone Lake	33° 23.818' N	105° 41.957' W
South Fork	Dip Site	Mescalero Dip	33° 17.952' N	105° 41.119' W
South Fork	Draft Site		33° 09.410' N	105° 46.981' W
South Fork	Drop Point	1	33° 20.011' N	105° 41.103' W
South Fork	Drop Point	10	33° 18.410' N	105° 42.959' W
South Fork	Drop Point	15	33° 19.178' N	105° 46.823' W
South Fork	Drop Point	20	33° 23.937' N	105° 45.769' W
South Fork	Drop Point	30	33° 23.480' N	105° 44.036' W
South Fork	Drop Point	40	33° 23.919' N	105° 40.879' W
South Fork	Drop Point	42	33° 24.010' N	105° 39.851' W
South Fork	Drop Point	5	33° 19.617' N	105° 42.276' W
South Fork	Drop Point	50	33° 22.211' N	105° 40.157' W
South Fork	Drop Point	51	33° 22.818' N	105° 40.821' W
South Fork	Drop Point	52	33° 23.165' N	105° 40.286' W
South Fork	Drop Point	6	33° 19.940' N	105° 42.644' W
South Fork	Drop Point	60	33° 21.481' N	105° 40.941' W
South Fork	Drop Point	8	33° 20.036' N	105° 44.979' W
South Fork	Hazard		33° 23.162' N	105° 39.336' W
South Fork	Hazard		33° 23.818' N	105° 39.240' W
South Fork	Helibase	Sierra Blanca	33° 27.818' N	105° 31.911' W
South Fork	Helispot	1	33° 19.227' N	105° 37.816' W
South Fork	Helispot	10	33° 19.910' N	105° 43.594' W
South Fork	Helispot	20	33° 19.848' N	105° 44.394' W
South Fork	Helispot	30	33° 18.607' N	105° 46.874' W
South Fork	Helispot	40	33° 19.812' N	105° 46.796' W
South Fork	Helispot	50	33° 20.899' N	105° 47.145' W
South Fork	Helispot	60	33° 22.112' N	105° 47.068' W
South Fork	Helispot	70	33° 23.157' N	105° 44.793' W
South Fork	Incident Command Post		33° 20.925' N	105° 38.860' W
South Fork	Lookout		33° 18.283' N	105° 47.145' W
South Fork	Medical	Lincoln County Medical Center	33° 19.246' N	105° 37.845' W
South Fork	Repeater	CMD 10	33° 18.272' N	105° 47.136' W
South Fork	Repeater	CMD 7	33° 23.433' N	105° 48.688' W
South Fork	Repeater	CMD 8	33° 25.896' N	105° 43.875' W
South Fork	Repeater	CMD 9	33° 36.373' N	105° 21.616' W
South Fork	Value at Risk		33° 21.519' N	105° 40.445' W
South Fork	Value at Risk	Substation	33° 21.248' N	105° 38.633' W
South Fork	Value at Risk	Substation	33° 24.265' N	105° 27.786' W
South Fork	Value at Risk	Substation	33° 17.941' N	105° 39.540' W
South Fork	Value at Risk	Substation	33° 16.119' N	105° 42.831' W
South Fork	Value at Risk	Substation	33° 27.932' N	105° 32.357' W
South Fork	Value at Risk	Substation	33° 23.644' N	105° 47.151' W

