

Medical Transportation

7/02/2024 Day
South Fork
NM-MEA-000382

17,569 acres at 6/24/2024 2358hr

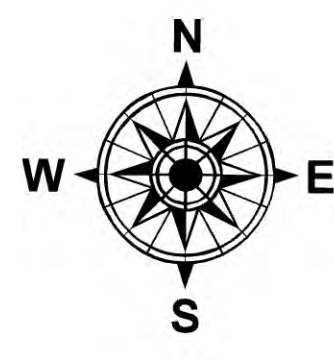
Salt
NM-MEA-000385

7,939 acres at 6/24/2024 2358hr

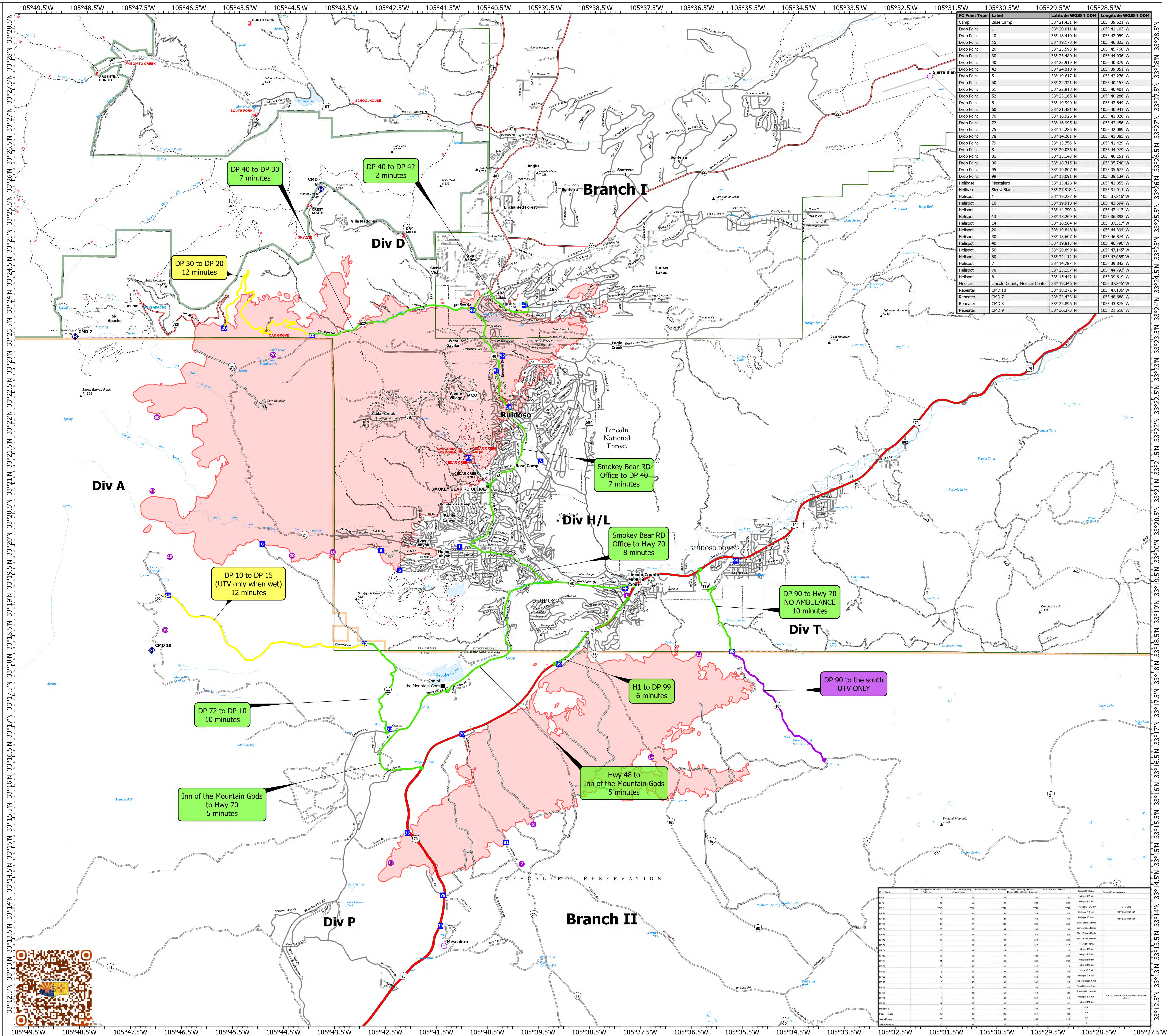
- Helispot
- ⊕ Helibase
- + Medical
- Drop Point
- ▲ Camp
- ◆ Repeater
- Access Route
- Wildfire Daily Fire Perimeter
- Ranger District Office
- Primary Highway
- Secondary Highway
- Secondary Paved
- Secondary Dirt
- Paved
- Gravel Road
- Dirt Road
- Unimproved Road
- Forest Service Roads Closed
- FS Wilderness Boundary

Medical Transport Times

- 0-10 Minutes
- 10-20 Minutes
- 20-30 Minutes
- 30+ Minutes
- UTV Only



0 1 2
Miles



FC Point Type	Label	Latitude WGS84 DDM	Longitude WGS84 DDM
Camp	Base Camp	33° 21.431' N	105° 39.521' W
Drop Point	31	33° 20.811' N	105° 39.103' W
Drop Point	10	33° 18.410' N	105° 42.959' W
Drop Point	15	33° 19.178' N	105° 46.823' W
Drop Point	20	33° 23.593' N	105° 45.760' W
Drop Point	30	33° 23.480' N	105° 44.036' W
Drop Point	40	33° 23.919' N	105° 40.879' W
Drop Point	42	33° 24.010' N	105° 39.851' W
Drop Point	5	33° 19.617' N	105° 42.276' W
Drop Point	50	33° 22.321' N	105° 40.157' W
Drop Point	51	33° 22.918' N	105° 40.401' W
Drop Point	52	33° 23.165' N	105° 40.286' W
Drop Point	6	33° 19.940' N	105° 42.644' W
Drop Point	68	33° 21.481' N	105° 44.979' W
Drop Point	70	33° 16.926' N	105° 41.026' W
Drop Point	72	33° 16.995' N	105° 42.456' W
Drop Point	75	33° 15.286' N	105° 42.089' W
Drop Point	78	33° 14.261' N	105° 41.385' W
Drop Point	79	33° 13.756' N	105° 41.429' W
Drop Point	8	33° 20.036' N	105° 44.979' W
Drop Point	81	33° 15.143' N	105° 40.151' W
Drop Point	90	33° 18.315' N	105° 35.740' W
Drop Point	95	33° 18.807' N	105° 35.677' W
Drop Point	99	33° 18.091' N	105° 39.134' W
Helibase	Mescalero	33° 13.428' N	105° 41.355' W
Helibase	Sierra Blanca	33° 22.818' N	105° 31.911' W
Helispot	11	33° 19.227' N	105° 37.816' W
Helispot	10	33° 19.910' N	105° 43.594' W
Helispot	11	33° 14.700' N	105° 42.413' W
Helispot	13	33° 18.269' N	105° 36.393' W
Helispot	14	33° 16.564' N	105° 37.317' W
Helispot	20	33° 19.848' N	105° 44.294' W
Helispot	30	33° 18.607' N	105° 46.874' W
Helispot	40	33° 19.813' N	105° 46.796' W
Helispot	50	33° 20.899' N	105° 47.145' W
Helispot	60	33° 22.112' N	105° 47.068' W
Helispot	7	33° 14.787' N	105° 39.843' W
Helispot	70	33° 23.157' N	105° 44.793' W
Helispot	8	33° 15.442' N	105° 39.619' W
Medical	Lincoln County Medical Center	33° 19.346' N	105° 37.845' W
Repeater	CMD 10	33° 18.272' N	105° 47.136' W
Repeater	CMD 7	33° 23.433' N	105° 48.668' W
Repeater	CMD 8	33° 25.896' N	105° 43.875' W
Repeater	CMD 9	33° 36.373' N	105° 21.616' W

Drop Point	Label	Latitude WGS84 DDM	Longitude WGS84 DDM	Notes
DP 1	DP 1	33° 18.410' N	105° 42.959' W	
DP 2	DP 2	33° 19.178' N	105° 46.823' W	
DP 3	DP 3	33° 23.593' N	105° 45.760' W	
DP 4	DP 4	33° 23.480' N	105° 44.036' W	
DP 5	DP 5	33° 23.919' N	105° 40.879' W	
DP 6	DP 6	33° 24.010' N	105° 39.851' W	
DP 7	DP 7	33° 19.617' N	105° 42.276' W	
DP 8	DP 8	33° 22.321' N	105° 40.157' W	
DP 9	DP 9	33° 22.918' N	105° 40.401' W	
DP 10	DP 10	33° 23.165' N	105° 40.286' W	
DP 11	DP 11	33° 19.940' N	105° 42.644' W	
DP 12	DP 12	33° 21.481' N	105° 44.979' W	
DP 13	DP 13	33° 16.926' N	105° 41.026' W	
DP 14	DP 14	33° 16.995' N	105° 42.456' W	
DP 15	DP 15	33° 15.286' N	105° 42.089' W	
DP 16	DP 16	33° 14.261' N	105° 41.385' W	
DP 17	DP 17	33° 13.756' N	105° 41.429' W	
DP 18	DP 18	33° 20.036' N	105° 44.979' W	
DP 19	DP 19	33° 15.143' N	105° 40.151' W	
DP 20	DP 20	33° 18.315' N	105° 35.740' W	
DP 21	DP 21	33° 18.807' N	105° 35.677' W	
DP 22	DP 22	33° 18.091' N	105° 39.134' W	
DP 23	DP 23	33° 13.428' N	105° 41.355' W	
DP 24	DP 24	33° 22.818' N	105° 31.911' W	
DP 25	DP 25	33° 19.227' N	105° 37.816' W	
DP 26	DP 26	33° 19.910' N	105° 43.594' W	
DP 27	DP 27	33° 14.700' N	105° 42.413' W	
DP 28	DP 28	33° 18.269' N	105° 36.393' W	
DP 29	DP 29	33° 16.564' N	105° 37.317' W	
DP 30	DP 30	33° 19.848' N	105° 44.294' W	
DP 31	DP 31	33° 18.607' N	105° 46.874' W	
DP 32	DP 32	33° 19.813' N	105° 46.796' W	
DP 33	DP 33	33° 20.899' N	105° 47.145' W	
DP 34	DP 34	33° 22.112' N	105° 47.068' W	
DP 35	DP 35	33° 14.787' N	105° 39.843' W	
DP 36	DP 36	33° 23.157' N	105° 44.793' W	
DP 37	DP 37	33° 15.442' N	105° 39.619' W	
DP 38	DP 38	33° 19.346' N	105° 37.845' W	
DP 39	DP 39	33° 18.272' N	105° 47.136' W	
DP 40	DP 40	33° 23.433' N	105° 48.668' W	
DP 41	DP 41	33° 25.896' N	105° 43.875' W	
DP 42	DP 42	33° 36.373' N	105° 21.616' W	