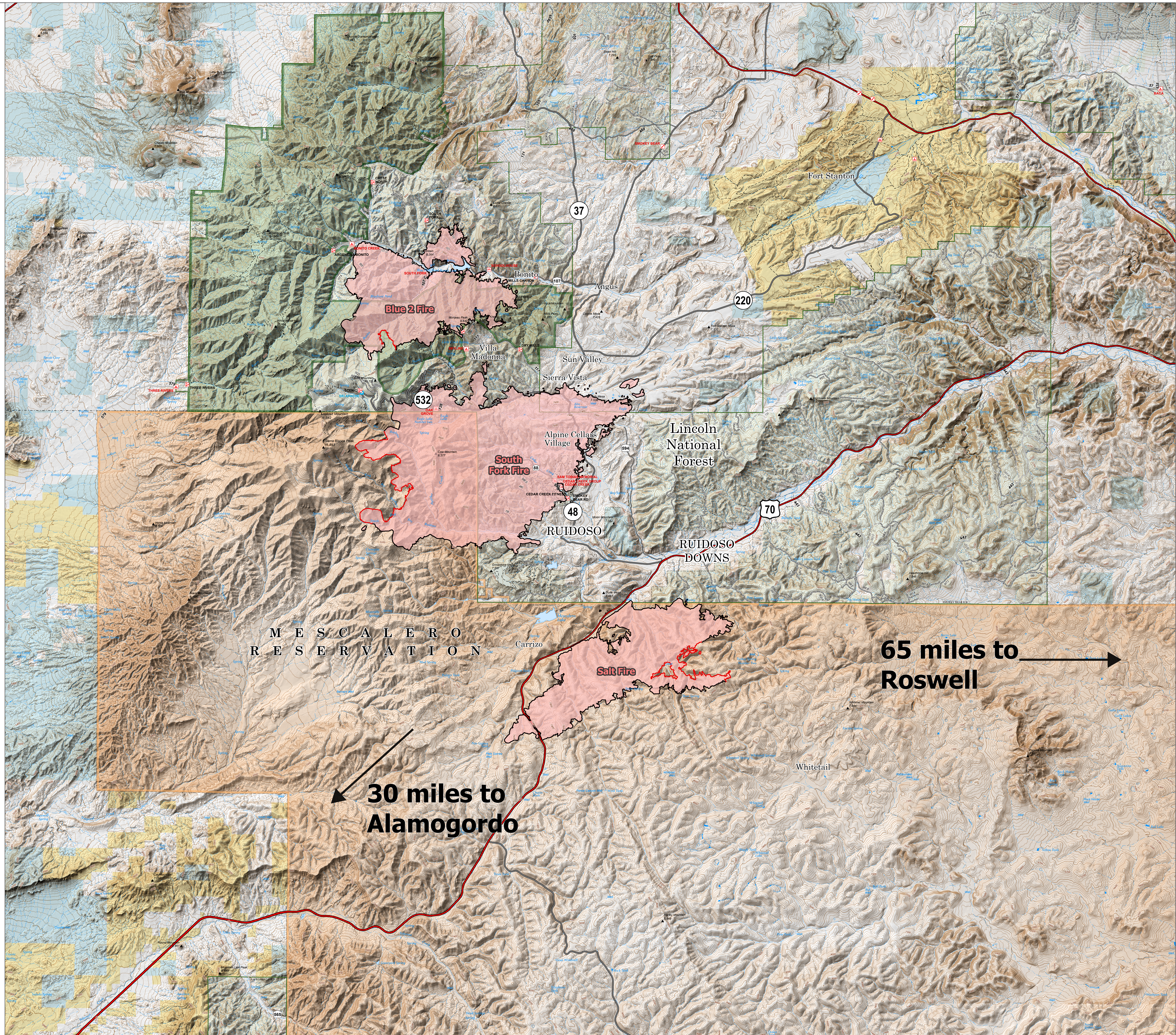


Public Information

7/02/2024 Day
South Fork
NM-MEA-000382
17,569 acres at 6/24/2024 2358hr

Salt
NM-MEA-000385
7,939 acres at 6/24/2024 2358hr

- Contained
- Uncontained
- Primary Highway
- Secondary Highway
- State Road (Dirt)
- ▭ Tribal Lands
- ▭ USFS Roadless Areas
- ▭ USFS Wilderness
- ▭ Forest Service Land
- ▭ Bureau of Land Management Lands
- ▭ State Lands
- ▭ Wildfire Daily Fire Perimeter



M E S C A L E R O
R E S E R V A T I O N

30 miles to
Alamogordo

65 miles to
Roswell

