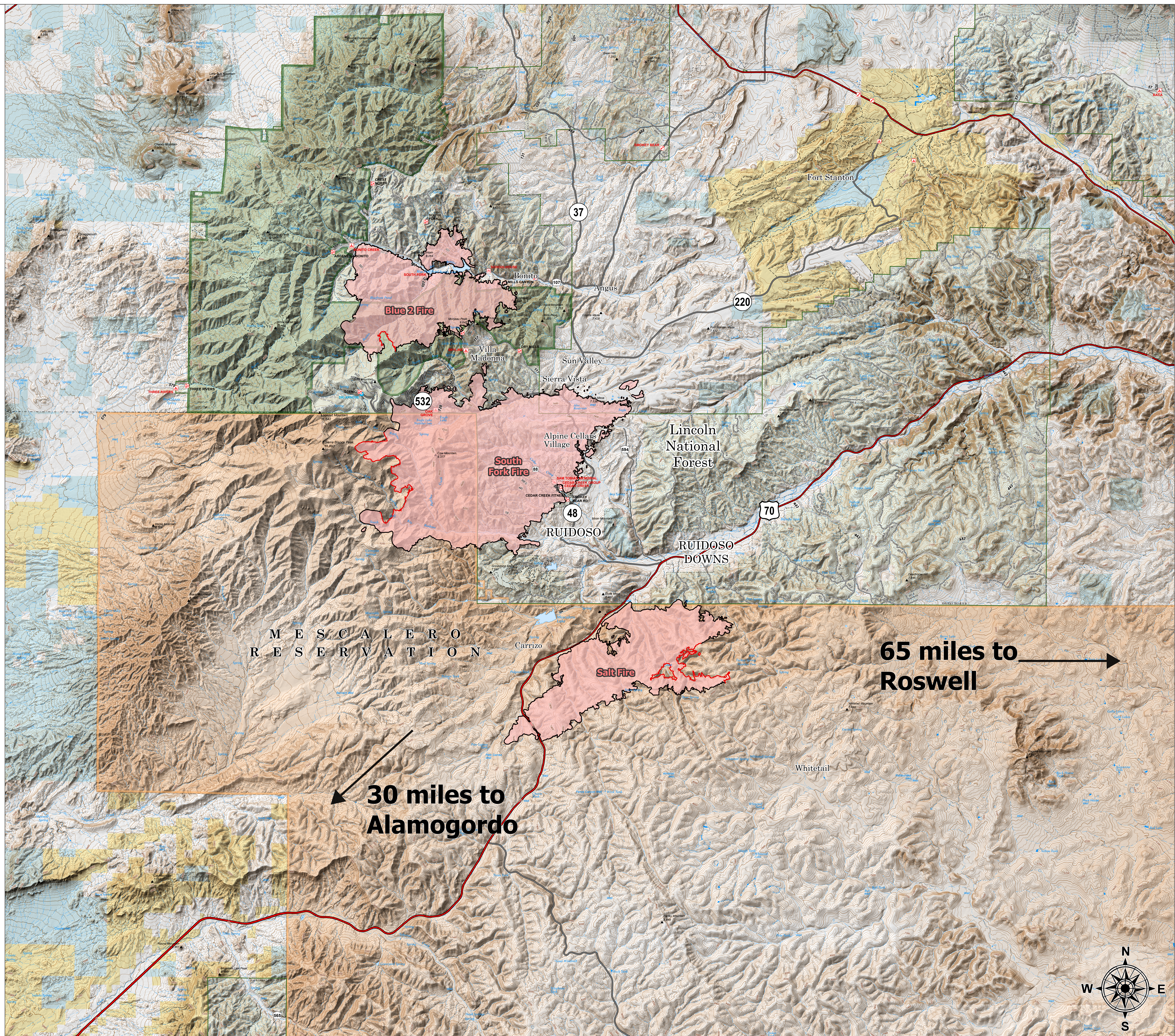


# Public Information

7/04/2024 Day  
South Fork  
NM-MEA-000382  
17,569 acres at 6/24/2024 2358hr

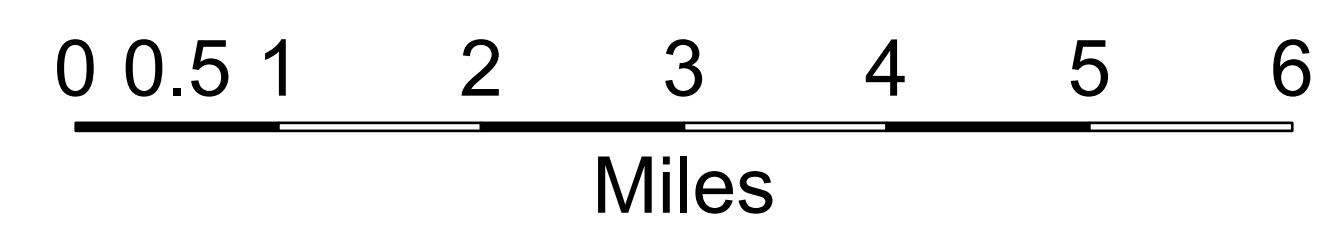
Salt  
NM-MEA-000385  
7,939 acres at 6/24/2024 2358hr

- Contained
- Uncontained
- Primary Highway
- Secondary Highway
- State Road (Dirt)
- ▭ Tribal Lands
- ▭ USFS Roadless Areas
- ▭ USFS Wilderness
- ▭ Forest Service Land
- ▭ Bureau of Land Management Lands
- ▭ State Lands
- ▭ Wildfire Daily Fire Perimeter



65 miles to Roswell →

← 30 miles to Alamogordo



1:60,000 | SW IMT 5 | 7/3/2024 1948  
Acres from Mixed Methods  
North American 1983 Datum. Lat/Long Grid

