

# Pilot

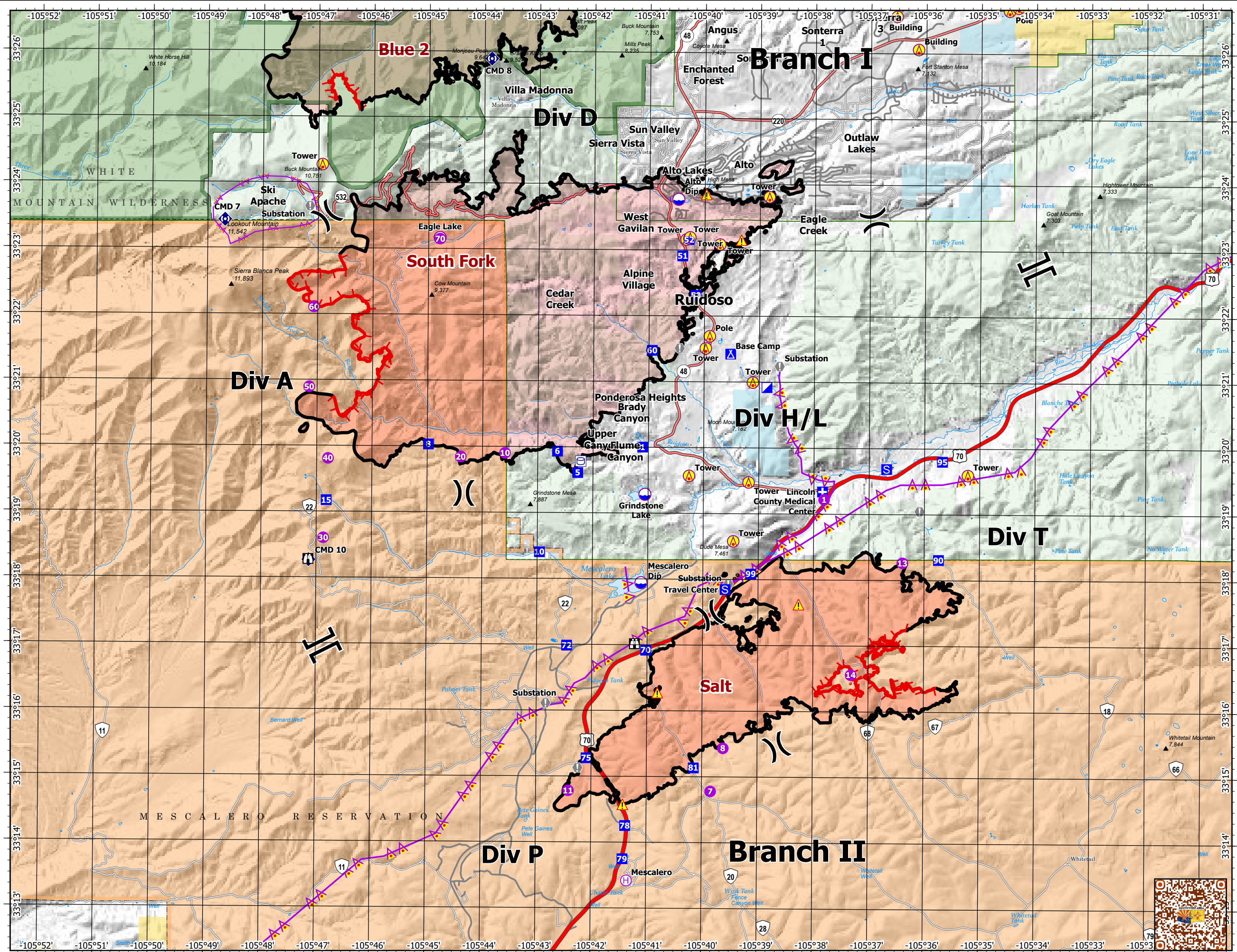
7/05/2024 Day  
South Fork  
NM-MEA-000382  
17,569 acres at 6/24/2024 2358hr

Salt  
NM-MEA-000385  
7,939 acres at 6/24/2024 2358hr

- Aerial Hazard
- Helispot
- Helibase
- Division Break
- Branch Break
- Medical
- Incident Command Post
- Drop Point
- Camp
- Staging Area
- Lookout
- Value at Risk
- Repeater
- Hazard
- Dip Site
- Aerial Hazard
- Contained
- Uncontained
- Wildfire Daily Fire Perimeter
- FS Wilderness Boundary
- Forest Service Land
- BLM
- State Lands
- Primary Highway
- Secondary Highway
- Secondary Paved
- Secondary Dirt



1:100,735 | SWIMT5 GISS | 7/4/2024 2000  
Acres from Mixed Methods  
North American 1983 Datum, Lat/Long Grid



Incident Name	FC Point Type	Label	Comments	Latitude WGS84 DDM	Longitude WGS84 DDM
Salt	Drop Point	70		33° 16.926' N	105° 41.026' W
Salt	Drop Point	72	DropPoint for Ambo	33° 16.995' N	105° 42.456' W
Salt	Drop Point	75		33° 15.286' N	105° 42.089' W
Salt	Drop Point	78		33° 14.261' N	105° 41.385' W
Salt	Drop Point	79		33° 13.756' N	105° 41.429' W
Salt	Drop Point	81		33° 15.143' N	105° 40.151' W
Salt	Drop Point	90		33° 18.315' N	105° 35.740' W
Salt	Drop Point	95	large parking area	33° 19.807' N	105° 35.677' W
Salt	Drop Point	99		33° 18.091' N	105° 39.134' W
Salt	Hazard		Down power lines	33° 14.582' N	105° 41.430' W
Salt	Hazard		Flagged in orange Fence line on the ground. Happened before the fire	33° 16.282' N	105° 40.811' W
Salt	Hazard		narrow canyon flash flood hazard	33° 17.633' N	105° 38.268' W
Salt	Helibase	Mescalero	BIA Mescalero Helibase - 3 pads, type 2 Approved	33° 13.428' N	105° 41.355' W
Salt	Helispot	11	Approved Type 2 H-11, barbed wire fence on north end	33° 14.790' N	105° 42.413' W
Salt	Helispot	13	Approved T2H power limited 1 way approach, needs SW winds, dozer needs to flatten. Dust abatement needed if it dries out.	33° 18.269' N	105° 36.393' W
Salt	Helispot	14	Approved T2H	33° 16.564' N	105° 37.317' W
Salt	Helispot	7	Approved H-7	33° 14.787' N	105° 39.843' W
Salt	Helispot	8	Approved Type 2	33° 15.442' N	105° 39.619' W
Salt	Lookout		Human repeater location. Reaches travel center, DP75, S. snow canyon.	33° 17.023' N	105° 41.230' W
Salt	Staging Area		Ruidoso downs. Large enough for many low boys	33° 19.692' N	105° 36.687' W
Salt	Staging Area	Travel Center	Travel center Salt fire	33° 17.855' N	105° 39.596' W
Salt	Value at Risk		Surface black poly water pipeline	33° 19.053' N	105° 36.087' W
Salt	Value at Risk		House below dozer line, consult residence about erosional issues, BAER TEAM about issues	33° 15.139' N	105° 42.246' W
South Fork	Aerial Hazard	Building		33° 26.067' N	105° 36.144' W
South Fork	Aerial Hazard	Building		33° 26.568' N	105° 36.536' W
South Fork	Aerial Hazard	Fence		33° 30.335' N	105° 34.303' W
South Fork	Aerial Hazard	Pole		33° 21.700' N	105° 39.900' W
South Fork	Aerial Hazard	Pole		33° 26.656' N	105° 34.498' W
South Fork	Aerial Hazard	Pole		33° 26.703' N	105° 34.339' W
South Fork	Aerial Hazard	Pole		33° 26.727' N	105° 34.258' W
South Fork	Aerial Hazard	Pole		33° 27.151' N	105° 33.919' W
South Fork	Aerial Hazard	Pole		33° 27.172' N	105° 33.679' W
South Fork	Aerial Hazard	Pole		33° 27.177' N	105° 33.608' W
South Fork	Aerial Hazard	Tower		33° 18.587' N	105° 39.455' W
South Fork	Aerial Hazard	Tower		33° 19.483' N	105° 39.183' W
South Fork	Aerial Hazard	Tower		33° 19.578' N	105° 40.262' W
South Fork	Aerial Hazard	Tower		33° 19.600' N	105° 35.217' W
South Fork	Aerial Hazard	Tower		33° 21.000' N	105° 39.117' W
South Fork	Aerial Hazard	Tower		33° 21.516' N	105° 39.972' W
South Fork	Aerial Hazard	Tower		33° 23.093' N	105° 39.722' W
South Fork	Aerial Hazard	Tower		33° 23.167' N	105° 40.333' W
South Fork	Aerial Hazard	Tower		33° 23.183' N	105° 40.283' W
South Fork	Aerial Hazard	Tower		33° 23.200' N	105° 40.267' W
South Fork	Aerial Hazard	Tower	The tower has no light or bright object on top so it remains a hazard for aircraft. 7/1. Approx. 100 ft. high.	33° 23.818' N	105° 38.830' W

Incident Name	FC Point Type	Label	Comments	Latitude WGS84 DDM	Longitude WGS84 DDM
South Fork	Aerial Hazard	Tower		33° 24.275' N	105° 46.930' W
South Fork	Aerial Hazard	Tower		33° 32.889' N	105° 36.137' W
South Fork	Camp	Base Camp		33° 21.431' N	105° 39.521' W
South Fork	Dip Site	Alto Dip	Hazard power lines on east and west ends. Ownership Village of Ruidoso	33° 23.777' N	105° 40.478' W
South Fork	Dip Site	Eagle Lake	Ownership MEA	33° 23.173' N	105° 44.795' W
South Fork	Dip Site	Grindstone Lake	Ownership Village of Ruidoso	33° 19.293' N	105° 41.057' W
South Fork	Dip Site	Mescalero Dip	Hazards: Zip line across the lake. Ownership MEA	33° 17.952' N	105° 41.119' W
South Fork	Draft Site		Overhead stand pipe	33° 09.410' N	105° 46.981' W
South Fork	Drop Point	1		33° 20.011' N	105° 41.103' W
South Fork	Drop Point	10		33° 18.410' N	105° 42.959' W
South Fork	Drop Point	15	Parking/ Staging	33° 19.178' N	105° 46.823' W
South Fork	Drop Point	5		33° 19.617' N	105° 42.276' W
South Fork	Drop Point	50		33° 22.321' N	105° 40.157' W
South Fork	Drop Point	51		33° 22.918' N	105° 40.401' W
South Fork	Drop Point	52		33° 23.165' N	105° 40.286' W
South Fork	Drop Point	6		33° 19.940' N	105° 42.644' W
South Fork	Drop Point	60		33° 21.481' N	105° 40.941' W
South Fork	Drop Point	8		33° 20.036' N	105° 44.979' W
South Fork	Hazard		Down power line. (7/1 power is off and in process of being repaired).	33° 23.162' N	105° 39.336' W
South Fork	Hazard		Railroad Ties buried and smoldering. Will continue to put up smoke. Do not use water or foam on Railroad Ties. Still smoking on 7/1. Will need to continue to burn out or fill the holes to deprive it of oxygen.	33° 23.854' N	105° 39.974' W
South Fork	Helibase	Sierra Blanca	"South Fork Helibase" Sierra Blanca Airport	33° 27.818' N	105° 31.911' W
South Fork	Helispot	1	Call ER direct if landing (security will assist on road guard) 575-630-4258	33° 19.227' N	105° 37.816' W
South Fork	Helispot	10	Approved type 3	33° 19.910' N	105° 43.594' W
South Fork	Helispot	20	Approved for type 3	33° 19.848' N	105° 44.394' W
South Fork	Helispot	30		33° 18.607' N	105° 46.874' W
South Fork	Helispot	40	Type 2 and 3 approved. Can also be used as a sling site	33° 19.813' N	105° 46.796' W
South Fork	Helispot	50	Type 2 and 3 approved	33° 20.899' N	105° 47.145' W
South Fork	Helispot	60	Approved	33° 22.112' N	105° 47.068' W
South Fork	Helispot	70	Type 2 approved	33° 23.157' N	105° 44.793' W
South Fork	Incident Command Post			33° 20.925' N	105° 38.860' W
South Fork	Lookout		Lookout Tower	33° 18.283' N	105° 47.145' W
South Fork	Medical	Lincoln County Medical Center		33° 19.346' N	105° 37.845' W
South Fork	Repeater	CMD 10		33° 18.272' N	105° 47.136' W
South Fork	Repeater	CMD 7		33° 23.433' N	105° 48.688' W
South Fork	Repeater	CMD 8		33° 25.896' N	105° 43.875' W
South Fork	Repeater	CMD 9		33° 36.373' N	105° 21.616' W
South Fork	Value at Risk		Underground residential plumbing structure. Uncovered by dozer line push. Marked with pink flagging. (Novack)	33° 21.518' N	105° 40.445' W
South Fork	Value at Risk	Substation		33° 21.248' N	105° 38.633' W
South Fork	Value at Risk	Substation		33° 24.265' N	105° 27.786' W
South Fork	Value at Risk	Substation		33° 17.941' N	105° 39.540' W
South Fork	Value at Risk	Substation		33° 16.119' N	105° 42.831' W
South Fork	Value at Risk	Substation		33° 27.932' N	105° 32.357' W
South Fork	Value at Risk	Substation		33° 23.644' N	105° 47.151' W