

Strategic Operations

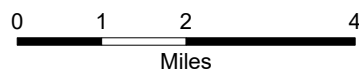
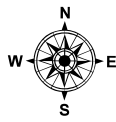
7/05/2024 Day
South Fork
NM-MEA-000382

17,569 acres at 6/24/2024 2358hr

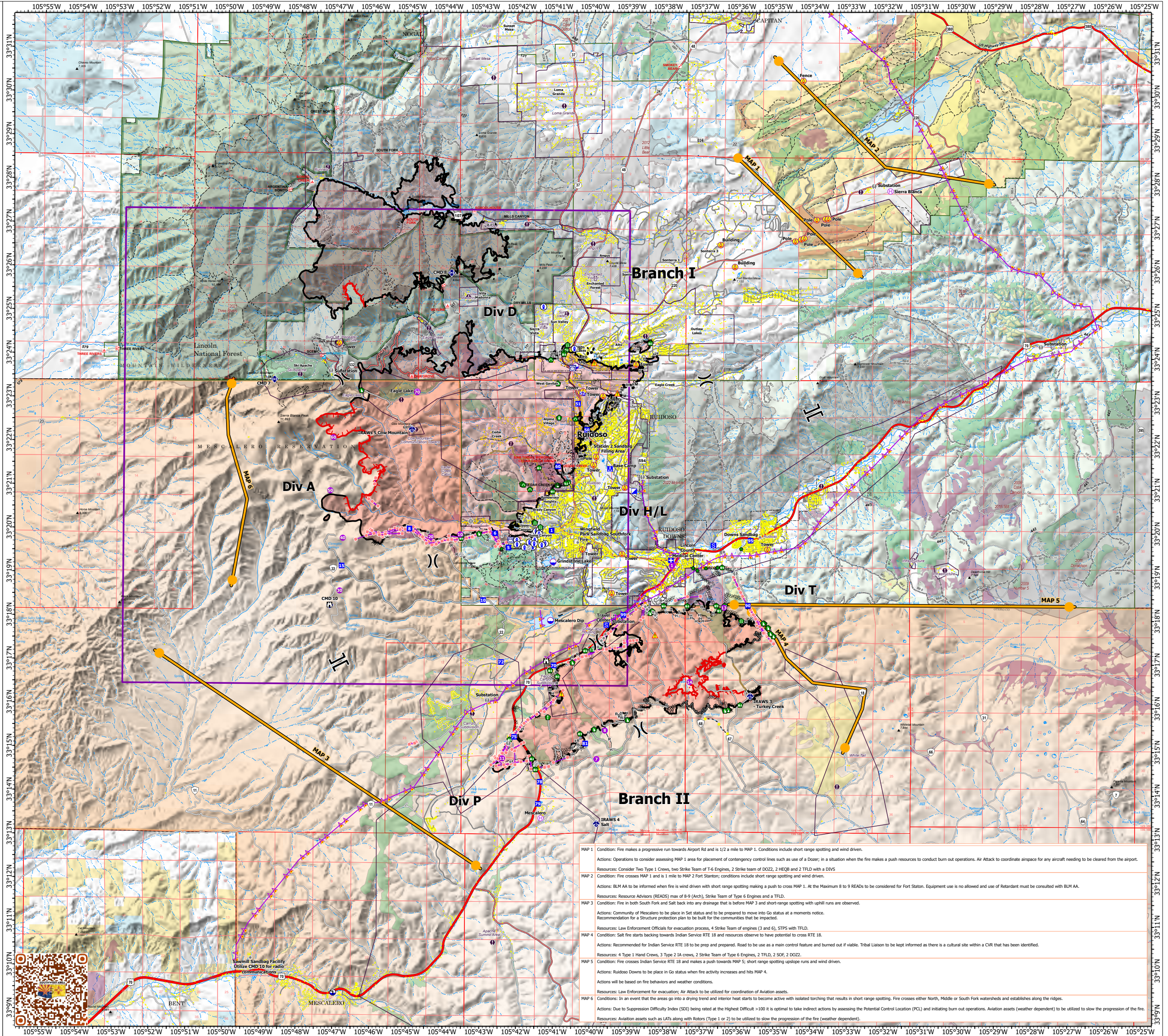
Salt
NM-MEA-000385

7,939 acres at 6/24/2024 2358hr

- Critical Value at Risk
- Planning Area (South Fork)
- Structure
- Aerial Hazard
- Helispot
- Helibase
- Division Break
- Branch Break
- Medical
- Incident Command Post
- Drop Point
- Camp
- Staging Area
- Lookout
- Value at Risk
- Other
- Gate
- Bridge
- Stream Crossing
- Road Repair
- Resource Location
- Repair Point
- Hazard Tree
- Dozer Push
- Culvert
- Mobile Weather Unit
- Repeater
- Hazard
- Dip Site
- Draft Site
- Hydrant
- Completed Dozer Line
- Completed Hand Line
- Completed Mixed Construction Line
- Completed Road as Line
- Access Route
- Highlighted Feature
- Management Action Point
- Other
- Repair Line
- Road Repair
- Aerial Hazard
- Retardant Drop
- Contained
- Uncontained
- Wildfire Daily Fire Perimeter
- Primary Highway
- Secondary Highway
- Secondary Paved
- State Road (Dirt)
- Secondary Dirt
- Paved
- Gravel Road
- Dirt Road
- Unimproved Road
- Forest Service Roads Closed
- FS Wilderness Boundary
- Forest Service Land
- Bureau of Land Management Lands
- State Lands
- USFS Historic Fire Perimeters
- Blue 2 (2024)
- Interagency Fuels Treatments
- Fire - Broadcast Burn
- Fire - Other
- Mechanical
- Other



1:50,000 | SWMIT 5 | 7/4/2024 2029
Acres from Mixed Methods
North American 1983 Datum, Lat,Long Grid



MAP 1 Condition: Fire makes a progressive run towards Airport Rd and is 1/2 a mile to MAP 1. Conditions include short range spotting and wind driven.
Actions: Operations to consider assessing MAP 1 area for placement of contingency control lines such as use of a Dozer; in a situation when the fire makes a push resources to conduct burn out operations. Air Attack to coordinate airspace for any aircraft needing to be cleared from the airport.
Resources: Consider Two Type 1 Crews, two Strike Team of T-6 Engines, 2 Strike team of DOZZ, 2 HEQB and 2 TFLD with a DIVS

MAP 2 Condition: Fire crosses MAP 1 and is 1 mile to MAP 2 Fort Stanton; conditions include short range spotting and wind driven.
Actions: BLM AA to be informed when fire is wind driven with short range spotting making a push to cross MAP 1. At the Maximum 8 to 9 READS to be considered for Fort Stanton. Equipment use is not allowed and use of Retardant must be consulted with BLM AA.
Resources: Resource Advisors (READS) max of 8-9 (Arch), Strike Team of Type 6 Engines and a TFLD.

MAP 3 Condition: Fire in both South Fork and Salt back into any drainage that is before MAP 3 and short-range spotting with uphill runs are observed.
Actions: Community of Mescalero to be placed in Set status and to be prepared to move into Go status at a moments notice. Recommendation for a Structure protection plan to be built for the communities that are impacted.
Resources: Law Enforcement Officials for evacuation process, 4 Strike Team of engines (3 and 6), STPS with TFLD.

MAP 4 Condition: Salt fire starts backing towards Indian Service RTE 18 and resources observe to have potential to cross RTE 18.
Actions: Recommended for Indian Service RTE 18 to be prep and prepared. Road to be used as a main control feature and burned out if viable. Tribal Liaison to be kept informed as there is a cultural site within a CVR that has been identified.
Resources: 4 Type 1 Hand Crews, 3 Type 2 IA crews, 2 Strike Team of Type 6 Engines, 2 TFLD, 2 SOF, 2 DOZZ.

MAP 5 Condition: Fire crosses Indian Service RTE 18 and makes a push towards MAP 5; short range spotting upslope runs and wind driven.
Actions: Ruidoso Downs to be placed in Go status when fire activity increases and hits MAP 4.
Resources: Law Enforcement for evacuation; Air Attack to be utilized for coordination of Aviation assets.

MAP 6 Condition: In an event that the areas go into a drying trend and interior heat starts to become active with isolated torching that results in short range spotting. Fire crosses either North, Middle or South Fork watersheds and establishes along the ridges.
Actions: Due to Suppression Difficulty Index (SDI) being rated at the Highest Difficult >100 it is optimal to take indirect actions by assessing the Potential Control Location (PCL) and initiating burn out operations. Aviation assets (weather dependent) to be utilized to slow the progression of the fire.
Resources: Aviation assets such as LATs along with Rotors (Type 1 or 2) to be utilized to slow the progression of the fire (weather dependent).