

Air Ops

7/07/2024 Day

South Fork

NM-MEA-000382

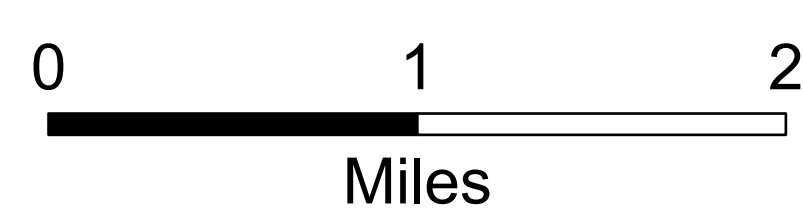
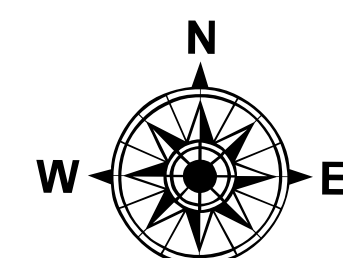
17,569 acres at 6/24/2024 2358hr

Salt

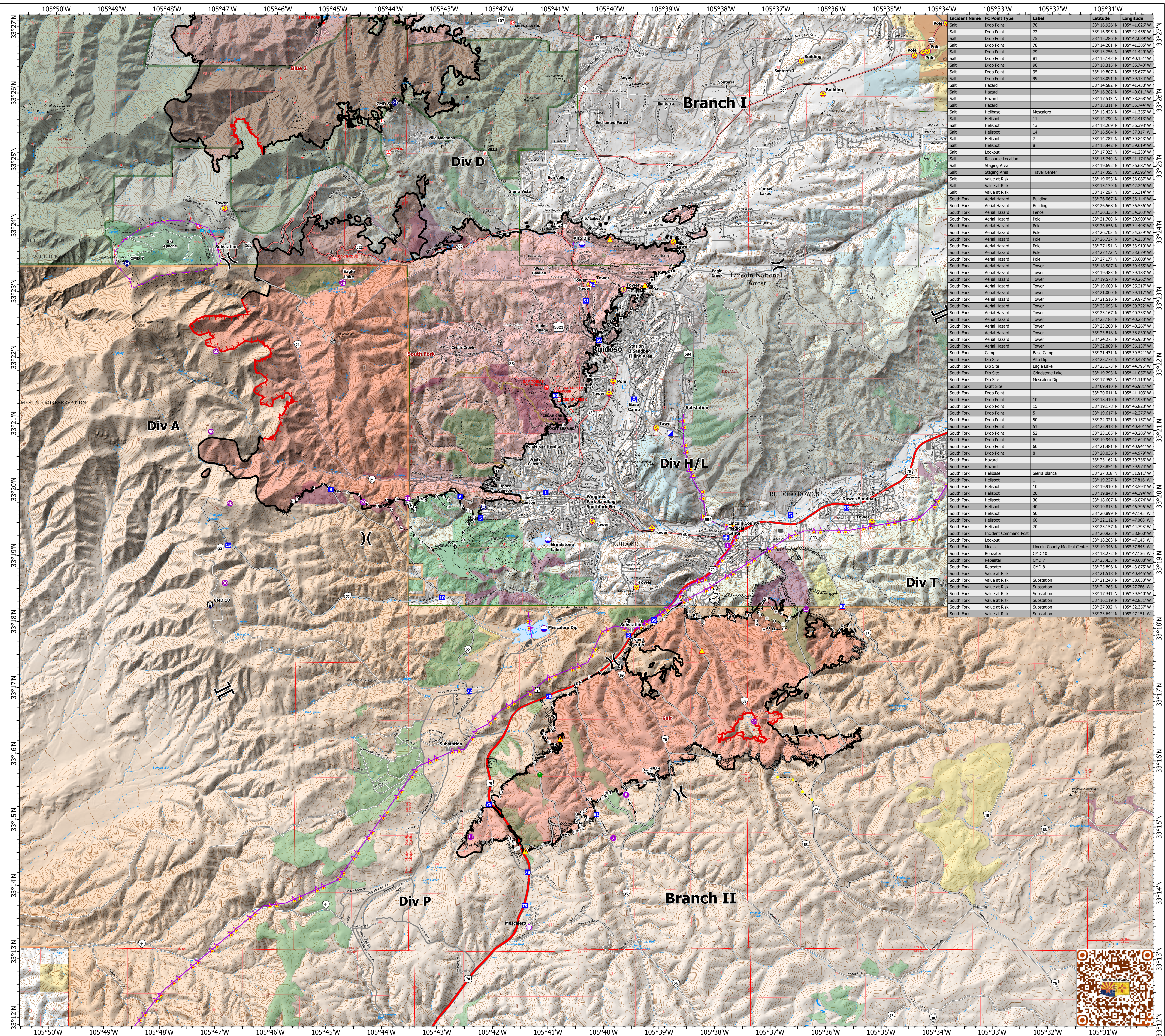
NM-MEA-000385

7,939 acres at 6/24/2024 2358hr

- Structure
- Aerial Hazard
- Helispot
- Helibase
- Division Break
- Branch Break
- Medical
- Incident Command Post
- Drop Point
- Camp
- Staging Area
- Lookout
- Value at Risk
- Other
- Resource Location
- Repeater
- Hazard
- Dip Site
- Completed Dozer Line
- Completed Hand Line
- Completed Mixed Construction Line
- Completed Road as Line
- Access Route
- Highlighted Feature
- Other
- Road Repair
- Aerial Hazard
- Contained
- Uncontained
- Wildfire Daily Fire Perimeter
- Primary Highway
- Secondary Highway
- Secondary Paved
- Secondary Dirt
- Paved
- Gravel Road
- Dirt Road
- Unimproved Road
- Forest Service Roads Closed
- FS Wilderness Boundary
- Forest Service Land
- Bureau of Land Management Lands
- State Lands
- USFS Historic Fire Perimeters
- Interagency Fuels Treatments
- Fire - Broadcast Burn
- Fire - Other
- Mechanical
- Other



1:33,000 | SW IMT 5 | 7/6/2024 1947
Acres from Mixed Methods
North American 1983 Datum. LatLong Grid



| Incident Name | FC Point Type | Label | Latitude | Longitude |
|---------------|-----------------------|-------------------------------|---------------|----------------|
| Salt | Drop Point | 70 | 33° 16.926' N | 105° 41.026' W |
| Salt | Drop Point | 72 | 33° 16.995' N | 105° 42.456' W |
| Salt | Drop Point | 75 | 33° 15.286' N | 105° 42.889' W |
| Salt | Drop Point | 78 | 33° 14.261' N | 105° 41.385' W |
| Salt | Drop Point | 79 | 33° 13.256' N | 105° 41.429' W |
| Salt | Drop Point | 81 | 33° 15.143' N | 105° 40.151' W |
| Salt | Drop Point | 90 | 33° 18.315' N | 105° 35.740' W |
| Salt | Drop Point | 95 | 33° 19.807' N | 105° 35.677' W |
| Salt | Drop Point | 99 | 33° 18.830' N | 105° 39.240' W |
| Salt | Hazard | | 33° 14.582' N | 105° 41.430' W |
| Salt | Hazard | | 33° 16.282' N | 105° 40.811' W |
| Salt | Hazard | | 33° 17.633' N | 105° 38.268' W |
| Salt | Hazard | | 33° 18.311' N | 105° 35.744' W |
| Salt | Helibase | Mescalero | 33° 13.428' N | 105° 41.355' W |
| Salt | Helispot | 11 | 33° 14.290' N | 105° 40.833' W |
| Salt | Helispot | 13 | 33° 18.269' N | 105° 36.393' W |
| Salt | Helispot | 14 | 33° 16.564' N | 105° 37.317' W |
| Salt | Helispot | 7 | 33° 14.787' N | 105° 39.843' W |
| Salt | Helispot | 8 | 33° 15.442' N | 105° 39.619' W |
| Salt | Lookout | | 33° 17.023' N | 105° 41.230' W |
| Salt | Resource Location | | 33° 15.740' N | 105° 41.740' W |
| Salt | Staging Area | | 33° 19.692' N | 105° 36.687' W |
| Salt | Value at Risk | Travel Center | 33° 17.855' N | 105° 39.596' W |
| Salt | Value at Risk | | 33° 19.053' N | 105° 36.087' W |
| Salt | Value at Risk | | 33° 15.139' N | 105° 42.246' W |
| Salt | Value at Risk | | 33° 17.267' N | 105° 36.314' W |
| South Fork | Aerial Hazard | Building | 33° 26.807' N | 105° 36.141' W |
| South Fork | Aerial Hazard | Building | 33° 26.568' N | 105° 36.536' W |
| South Fork | Aerial Hazard | Fence | 33° 30.335' N | 105° 34.303' W |
| South Fork | Aerial Hazard | Pole | 33° 21.700' N | 105° 39.900' W |
| South Fork | Aerial Hazard | Pole | 33° 26.656' N | 105° 34.498' W |
| South Fork | Aerial Hazard | Pole | 33° 26.703' N | 105° 34.339' W |
| South Fork | Aerial Hazard | Pole | 33° 26.227' N | 105° 34.589' W |
| South Fork | Aerial Hazard | Pole | 33° 27.151' N | 105° 33.919' W |
| South Fork | Aerial Hazard | Pole | 33° 27.172' N | 105° 33.679' W |
| South Fork | Aerial Hazard | Pole | 33° 27.177' N | 105° 33.608' W |
| South Fork | Aerial Hazard | Tower | 33° 18.587' N | 105° 39.455' W |
| South Fork | Aerial Hazard | Tower | 33° 19.483' N | 105° 39.183' W |
| South Fork | Aerial Hazard | Tower | 33° 19.781' N | 105° 40.302' W |
| South Fork | Aerial Hazard | Tower | 33° 19.600' N | 105° 35.217' W |
| South Fork | Aerial Hazard | Tower | 33° 21.000' N | 105° 39.117' W |
| South Fork | Aerial Hazard | Tower | 33° 21.516' N | 105° 39.972' W |
| South Fork | Aerial Hazard | Tower | 33° 23.093' N | 105° 39.722' W |
| South Fork | Aerial Hazard | Tower | 33° 23.167' N | 105° 40.333' W |
| South Fork | Aerial Hazard | Tower | 33° 23.183' N | 105° 40.283' W |
| South Fork | Aerial Hazard | Tower | 33° 23.200' N | 105° 40.267' W |
| South Fork | Aerial Hazard | Tower | 33° 23.818' N | 105° 38.830' W |
| South Fork | Aerial Hazard | Tower | 33° 24.275' N | 105° 46.930' W |
| South Fork | Aerial Hazard | Tower | 33° 32.889' N | 105° 36.137' W |
| South Fork | Camp | Base Camp | 33° 21.431' N | 105° 39.521' W |
| South Fork | Dip Site | Alto Dip | 33° 23.777' N | 105° 40.478' W |
| South Fork | Dip Site | Eagle Lake | 33° 23.173' N | 105° 44.795' W |
| South Fork | Dip Site | Grindstone Lake | 33° 19.293' N | 105° 41.057' W |
| South Fork | Dip Site | Mescalero Dip | 33° 17.952' N | 105° 41.119' W |
| South Fork | Draft Site | | 33° 09.410' N | 105° 46.981' W |
| South Fork | Drop Point | 1 | 33° 20.011' N | 105° 41.103' W |
| South Fork | Drop Point | 10 | 33° 18.019' N | 105° 42.939' W |
| South Fork | Drop Point | 15 | 33° 19.178' N | 105° 46.823' W |
| South Fork | Drop Point | 5 | 33° 19.617' N | 105° 42.276' W |
| South Fork | Drop Point | 50 | 33° 22.321' N | 105° 40.157' W |
| South Fork | Drop Point | 51 | 33° 22.918' N | 105° 40.401' W |
| South Fork | Drop Point | 52 | 33° 23.165' N | 105° 40.286' W |
| South Fork | Drop Point | 6 | 33° 19.849' N | 105° 42.544' W |
| South Fork | Drop Point | 60 | 33° 21.481' N | 105° 40.941' W |
| South Fork | Drop Point | 8 | 33° 20.036' N | 105° 44.979' W |
| South Fork | Hazard | | 33° 23.162' N | 105° 39.336' W |
| South Fork | Hazard | | 33° 23.854' N | 105° 39.974' W |
| South Fork | Helibase | Sierra Blanca | 33° 27.818' N | 105° 31.911' W |
| South Fork | Helispot | | 33° 19.232' N | 105° 37.816' W |
| South Fork | Helispot | 10 | 33° 19.910' N | 105° 43.594' W |
| South Fork | Helispot | 20 | 33° 19.848' N | 105° 44.394' W |
| South Fork | Helispot | 30 | 33° 18.607' N | 105° 46.874' W |
| South Fork | Helispot | 40 | 33° 19.813' N | 105° 46.796' W |
| South Fork | Helispot | 50 | 33° 20.899' N | 105° 47.145' W |
| South Fork | Helispot | 60 | 33° 22.125' N | 105° 47.866' W |
| South Fork | Helispot | 70 | 33° 23.157' N | 105° 44.793' W |
| South Fork | Incident Command Post | | 33° 20.925' N | 105° 38.860' W |
| South Fork | Lookout | | 33° 18.283' N | 105° 47.145' W |
| South Fork | Medical | Lincoln County Medical Center | 33° 19.346' N | 105° 37.845' W |
| South Fork | Repeater | CMD 10 | 33° 18.272' N | 105° 47.136' W |
| South Fork | Repeater | CMD 7 | 33° 23.433' N | 105° 48.588' W |
| South Fork | Repeater | CMD 8 | 33° 25.896' N | 105° 43.875' W |
| South Fork | Value at Risk | | 33° 21.518' N | 105° 40.445' W |
| South Fork | Value at Risk | Substation | 33° 21.248' N | 105° 38.633' W |
| South Fork | Value at Risk | Substation | 33° 24.265' N | 105° 27.786' W |
| South Fork | Value at Risk | Substation | 33° 17.941' N | 105° 39.540' W |
| South Fork | Value at Risk | Substation | 33° 16.319' N | 105° 42.831' W |
| South Fork | Value at Risk | Substation | 33° 27.932' N | 105° 32.357' W |
| South Fork | Value at Risk | Substation | 33° 23.644' N | 105° 47.151' W |

