

Pilot

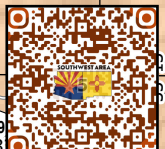
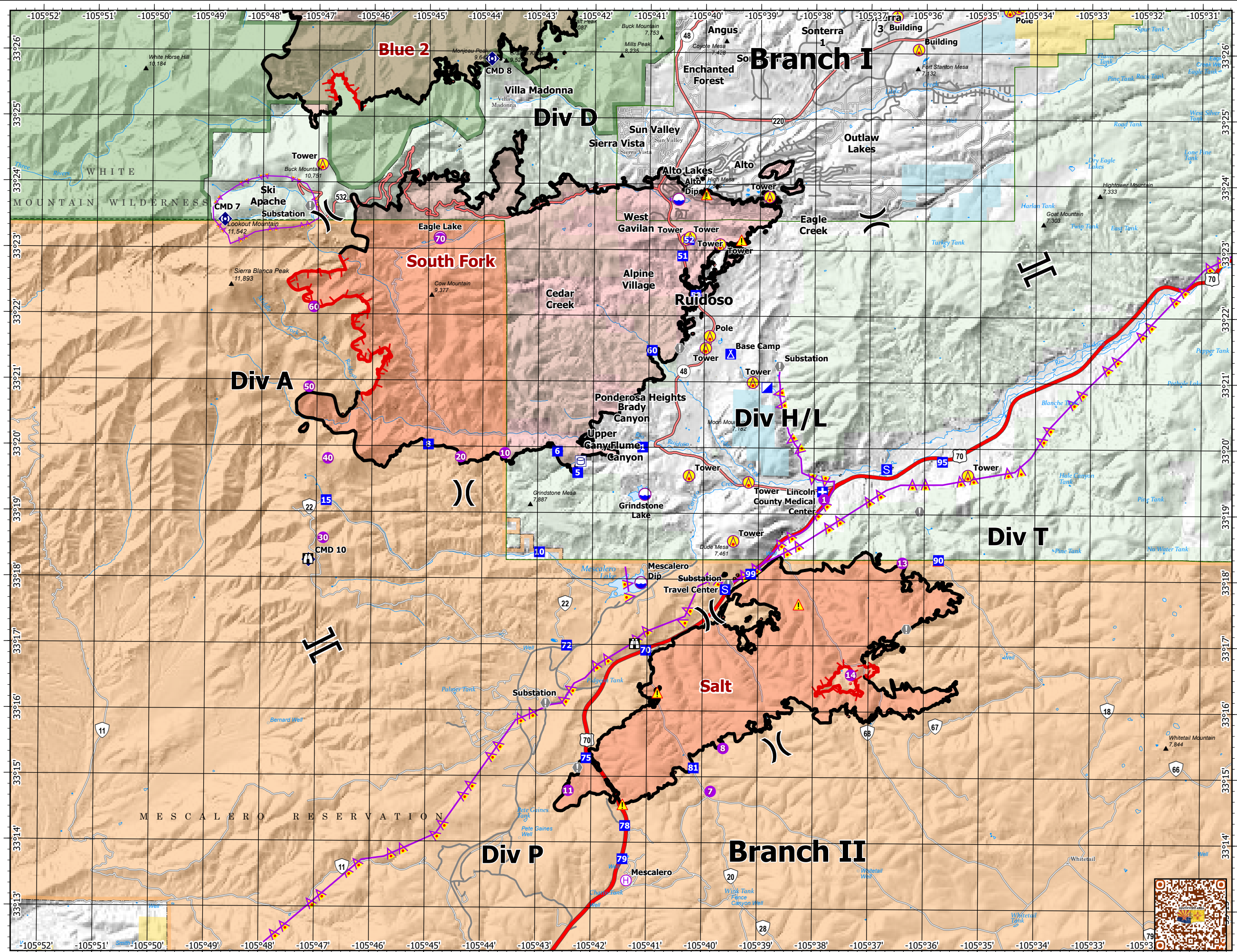
7/07/2024 Day
South Fork
NM-MEA-000382
17,569 acres at 6/24/2024 2358hr

Salt
NM-MEA-000385
7,939 acres at 6/24/2024 2358hr

- Aerial Hazard
- Helispot
- Helibase
- Division Break
- Branch Break
- Medical
- Incident Command Post
- Drop Point
- Camp
- Staging Area
- Lookout
- Value at Risk
- Repeater
- Hazard
- Dip Site
- Aerial Hazard
- Contained
- Uncontained
- Wildfire Daily Fire Perimeter
- FS Wilderness Boundary
- Forest Service Land
- BLM
- State Lands
- Primary Highway
- Secondary Highway
- Secondary Paved
- Secondary Dirt



1:100,735 | SWIMT5 GISS | 7/6/2024 1939
Acres from Mixed Methods
North American 1983 Datum, Lat/Long Grid



| Incident Name | FC Point Type | Label | Comments | Latitude WGS84 DDM | Longitude WGS84 DDM |
|---------------|---------------|---------------|---|--------------------|---------------------|
| Salt | Drop Point | 70 | | 33° 16.926' N | 105° 41.026' W |
| Salt | Drop Point | 72 | DropPoint for Ambo, all equipment moved as of 7/5, 1 porta john left | 33° 16.995' N | 105° 42.456' W |
| Salt | Drop Point | 75 | large parking area, staging area for equipment and material before fire | 33° 15.286' N | 105° 42.089' W |
| Salt | Drop Point | 78 | | 33° 14.261' N | 105° 41.385' W |
| Salt | Drop Point | 79 | paved area by Mescalero fire station | 33° 13.756' N | 105° 41.429' W |
| Salt | Drop Point | 81 | | 33° 15.143' N | 105° 40.151' W |
| Salt | Drop Point | 90 | | 33° 18.315' N | 105° 35.740' W |
| Salt | Drop Point | 95 | large parking area | 33° 19.807' N | 105° 35.677' W |
| Salt | Drop Point | 99 | preexisting road pull out | 33° 18.091' N | 105° 39.134' W |
| Salt | Hazard | | Down power lines | 33° 14.582' N | 105° 41.430' W |
| Salt | Hazard | | Flagged in orange Fence line on the ground. Happened before the fire | 33° 16.282' N | 105° 40.811' W |
| Salt | Hazard | | narrow canyon flash flood hazard | 33° 17.633' N | 105° 38.268' W |
| Salt | Hazard | | Do not use, parking area turned into mud put. this was a retaining pond. | 33° 18.311' N | 105° 35.744' W |
| Salt | Helibase | Mescalero | BIA Mescalero Helibase - 3 pads, type 2 Approved | 33° 13.428' N | 105° 41.355' W |
| Salt | Helispot | 11 | Approved Type 2 H-11, barbed wire fence on north end | 33° 14.790' N | 105° 42.413' W |
| Salt | Helispot | 13 | Approved T2H power limited 1 way approach, needs SW winds, dozer needs to flatten. Dust abatement needed if it dries out. 75 x 100 ft area. | 33° 18.269' N | 105° 36.393' W |
| Salt | Helispot | 14 | Approved T2H | 33° 16.564' N | 105° 37.317' W |
| Salt | Helispot | 7 | Approved H-7 | 33° 14.787' N | 105° 39.843' W |
| Salt | Helispot | 8 | Approved Type 2 | 33° 15.442' N | 105° 39.619' W |
| Salt | Lookout | | Human repeater location. Reaches travel center, DP75, S. snow canyon. | 33° 17.023' N | 105° 41.230' W |
| Salt | Staging Area | | Ruidoso downs. Large enough for many low boys | 33° 19.692' N | 105° 36.687' W |
| Salt | Staging Area | Travel Center | Travel center Salt fire , large paved parking lot | 33° 17.855' N | 105° 39.596' W |
| Salt | Value at Risk | | Surface black poly water pipeline | 33° 19.053' N | 105° 36.087' W |
| Salt | Value at Risk | | House below dozer line, consult residence about erosional issues, BAER TEAM about issues | 33° 15.139' N | 105° 42.246' W |
| Salt | Value at Risk | | Notify READ before repairs are made. READ monitor is required for any repairs in area. | 33° 17.267' N | 105° 36.314' W |
| South Fork | Aerial Hazard | Building | | 33° 26.067' N | 105° 36.144' W |
| South Fork | Aerial Hazard | Building | | 33° 26.568' N | 105° 36.536' W |
| South Fork | Aerial Hazard | Fence | | 33° 30.335' N | 105° 34.303' W |
| South Fork | Aerial Hazard | Pole | | 33° 21.700' N | 105° 39.900' W |
| South Fork | Aerial Hazard | Pole | | 33° 26.656' N | 105° 34.498' W |
| South Fork | Aerial Hazard | Pole | | 33° 26.703' N | 105° 34.339' W |
| South Fork | Aerial Hazard | Pole | | 33° 26.727' N | 105° 34.258' W |
| South Fork | Aerial Hazard | Pole | | 33° 27.151' N | 105° 33.919' W |
| South Fork | Aerial Hazard | Pole | | 33° 27.172' N | 105° 33.679' W |
| South Fork | Aerial Hazard | Pole | | 33° 27.177' N | 105° 33.608' W |
| South Fork | Aerial Hazard | Tower | | 33° 18.587' N | 105° 39.455' W |
| South Fork | Aerial Hazard | Tower | | 33° 19.483' N | 105° 39.183' W |
| South Fork | Aerial Hazard | Tower | | 33° 19.578' N | 105° 40.262' W |
| South Fork | Aerial Hazard | Tower | | 33° 19.600' N | 105° 35.217' W |
| South Fork | Aerial Hazard | Tower | | 33° 21.000' N | 105° 39.117' W |
| South Fork | Aerial Hazard | Tower | | 33° 21.516' N | 105° 39.972' W |
| South Fork | Aerial Hazard | Tower | | 33° 23.093' N | 105° 39.722' W |

| Incident Name | FC Point Type | Label | Comments | Latitude WGS84 DDM | Longitude WGS84 DDM |
|---------------|-----------------------|-------------------------------|---|--------------------|---------------------|
| South Fork | Aerial Hazard | Tower | | 33° 23.167' N | 105° 40.333' W |
| South Fork | Aerial Hazard | Tower | | 33° 23.183' N | 105° 40.283' W |
| South Fork | Aerial Hazard | Tower | | 33° 23.200' N | 105° 40.267' W |
| South Fork | Aerial Hazard | Tower | The tower has no light or bright object on top so it remains a hazard for aircraft. 7/1. Approx. 100 ft. high. | 33° 23.818' N | 105° 38.830' W |
| South Fork | Aerial Hazard | Tower | | 33° 24.275' N | 105° 46.930' W |
| South Fork | Aerial Hazard | Tower | | 33° 32.889' N | 105° 36.137' W |
| South Fork | Camp | Base Camp | | 33° 21.431' N | 105° 39.521' W |
| South Fork | Dip Site | Alto Dip | Hazard power lines on east and west ends. Ownership Village of Ruidoso | 33° 23.777' N | 105° 40.478' W |
| South Fork | Dip Site | Eagle Lake | Ownership MEA | 33° 23.173' N | 105° 44.795' W |
| South Fork | Dip Site | Grindstone Lake | Ownership Village of Ruidoso | 33° 19.293' N | 105° 41.057' W |
| South Fork | Dip Site | Mescalero Dip | Hazards: Zip line across the lake. Ownership MEA | 33° 17.952' N | 105° 41.119' W |
| South Fork | Draft Site | | Overhead stand pipe | 33° 09.410' N | 105° 46.981' W |
| South Fork | Drop Point | 1 | | 33° 20.011' N | 105° 41.103' W |
| South Fork | Drop Point | 10 | | 33° 18.410' N | 105° 42.959' W |
| South Fork | Drop Point | 15 | Parking/ Staging | 33° 19.178' N | 105° 46.823' W |
| South Fork | Drop Point | 5 | | 33° 19.617' N | 105° 42.276' W |
| South Fork | Drop Point | 50 | | 33° 22.321' N | 105° 40.157' W |
| South Fork | Drop Point | 51 | | 33° 22.918' N | 105° 40.401' W |
| South Fork | Drop Point | 52 | | 33° 23.165' N | 105° 40.286' W |
| South Fork | Drop Point | 6 | | 33° 19.940' N | 105° 42.644' W |
| South Fork | Drop Point | 60 | | 33° 21.481' N | 105° 40.941' W |
| South Fork | Drop Point | 8 | | 33° 20.036' N | 105° 44.979' W |
| South Fork | Hazard | | Down power line. (7/1 power is off and in process of being repaired). | 33° 23.162' N | 105° 39.336' W |
| South Fork | Hazard | | Railroad Ties buried and smoldering. Will continue to put up smoke. Do not use water or foam on Railroad Ties. Still smoking on 7/1. Will need to continue to burn out or fill the holes to deprive it of oxygen. | 33° 23.854' N | 105° 39.974' W |
| South Fork | Helibase | Sierra Blanca | "South Fork Helibase" Sierra Blanca Airport | 33° 27.818' N | 105° 31.911' W |
| South Fork | Helispot | 1 | Call ER direct if landing (security will assist on road guard) 575-630-4258 | 33° 19.227' N | 105° 37.816' W |
| South Fork | Helispot | 10 | Approved type 3 | 33° 19.910' N | 105° 43.594' W |
| South Fork | Helispot | 20 | Approved for type 3 | 33° 19.848' N | 105° 44.394' W |
| South Fork | Helispot | 30 | | 33° 18.607' N | 105° 46.874' W |
| South Fork | Helispot | 40 | Type 2 and 3 approved. Can also be used as a sling site | 33° 19.813' N | 105° 46.796' W |
| South Fork | Helispot | 50 | Type 2 and 3 approved | 33° 20.899' N | 105° 47.145' W |
| South Fork | Helispot | 60 | Approved | 33° 22.112' N | 105° 47.068' W |
| South Fork | Helispot | 70 | Type 2 approved | 33° 23.157' N | 105° 44.793' W |
| South Fork | Incident Command Post | | | 33° 20.925' N | 105° 38.860' W |
| South Fork | Lookout | | Lookout Tower | 33° 18.283' N | 105° 47.145' W |
| South Fork | Medical | Lincoln County Medical Center | | 33° 19.346' N | 105° 37.845' W |
| South Fork | Repeater | CMD 10 | | 33° 18.272' N | 105° 47.136' W |
| South Fork | Repeater | CMD 7 | | 33° 23.433' N | 105° 48.688' W |
| South Fork | Repeater | CMD 8 | | 33° 25.896' N | 105° 43.875' W |
| South Fork | Value at Risk | | Underground residential plumbing structure. Uncovered by dozer line push. Marked with pink flagging. (Novack) | 33° 21.518' N | 105° 40.445' W |
| South Fork | Value at Risk | Substation | | 33° 21.248' N | 105° 38.633' W |
| South Fork | Value at Risk | Substation | | 33° 24.265' N | 105° 27.786' W |
| South Fork | Value at Risk | Substation | | 33° 17.941' N | 105° 39.540' W |
| South Fork | Value at Risk | Substation | | 33° 16.119' N | 105° 42.831' W |
| South Fork | Value at Risk | Substation | | 33° 27.932' N | 105° 32.357' W |
| South Fork | Value at Risk | Substation | | 33° 23.644' N | 105° 47.151' W |