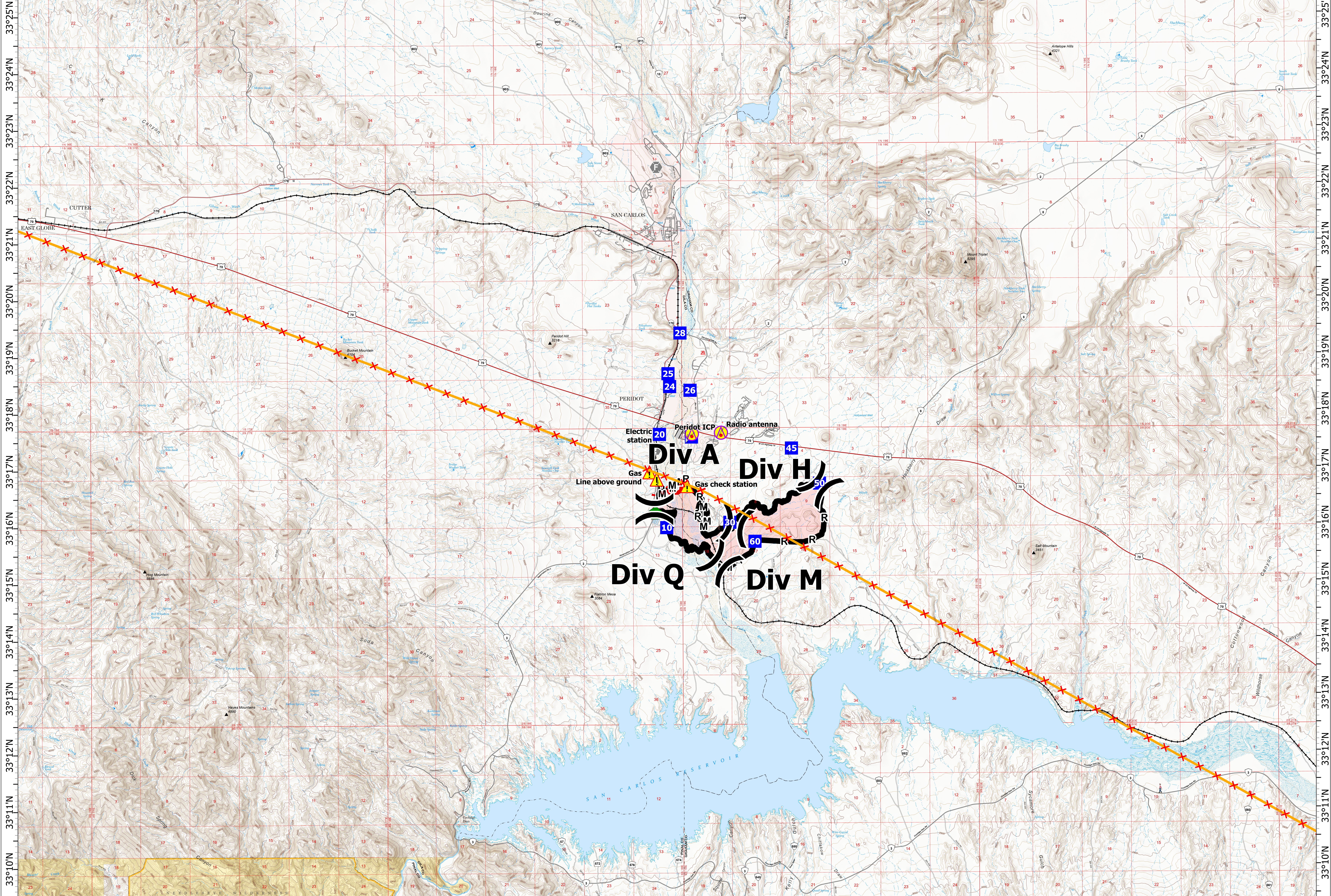


110°40'W 110°39'W 110°38'W 110°37'W 110°36'W 110°35'W 110°34'W 110°33'W 110°32'W 110°31'W 110°30'W 110°29'W 110°28'W 110°27'W 110°26'W 110°25'W 110°24'W 110°23'W 110°22'W 110°21'W 110°20'W 110°19'W 110°18'W 110°17'W 110°16'W 110°15'W 110°14'W



110°40'W 110°39'W 110°38'W 110°37'W 110°36'W 110°35'W 110°34'W 110°33'W 110°32'W 110°31'W 110°30'W 110°29'W 110°28'W 110°27'W 110°26'W 110°25'W 110°24'W 110°23'W 110°22'W 110°21'W 110°20'W 110°19'W 110°18'W 110°17'W 110°16'W 110°15'W 110°14'W

Briefing & IA

Toyo
AZ-SCA-000487
5/15/2024 Day

1,778
acres at
5/11/2024 14:00

1:36,240 | rdcrawford | 5/14/2024 1926
Acres from IR and GPS
North American 1983 Datum, Lat/Long Grid

- Aerial Hazard
- Division Break
- Incident Command Post
- Drop Point
- Value at Risk
- Fire Station
- Repair Point
- Hazard
- Completed Hand Line
- Completed Mixed Construction Line
- Completed Road as Line
- Access Route
- Contained
- Uncontained
- Natural Gas Pipelines
- Railroad

SOUTHWEST AREA
INCIDENT MANAGEMENT TEAM