



WATCH FIRE BUCKHORN FIRE

SAN CARLOS AGENCY
SAN CARLOS APACHE TRIBE

Values at Risk

Watch Fire Values at Risk:

- Structures
- Hospital
- Power lines
- Travel corridors
- Railroad
- Cultural Sites
- Holy Grounds
- Dance Grounds
- T & E Species

Buckhorn Fire Values at Risk:

- Commercial forest
- Non-commercial forest
- Bull Ridge planting site
- Black River water shed
- 10 of Diamonds campground
- T & E Species

Notes

Safety Spotlight

PLANNING FOR MEDICAL EMERGENCIES

Prior to each operational period, all wildland firefighters need to ask and be able to answer the following questions:

1. What are we going to do if someone gets hurt?
2. How will we get them out of here?
3. How long will it take to get them to the hospital?

All operational activities should be based on answers to these questions. If the answers are insufficient, stop, reassess and consider alternatives strategies and tactics.

2022 IRPG Page 2

WATCH FIRE: AZ-SCA-001115 PA R251 (1522)
BUCKHORN FIRE: AZ-SCA-001110 PA R25E (1522)

INCIDENT ACTION PLAN

Tuesday, July 16, 2024

Operational Period

Day 0700 to 2100

Check-in
Briefing Link
Finance Email
Maps
IAPs



Email supporting documentation to:
2024.watch.finance@firenet.gov

INCIDENT OBJECTIVES	1. Incident Name Watch Fire Buckhorn Fire	2. Date Prepared 07/15/2024	3. Time Prepared 2000
	4. Operational Period Tuesday July 16, 2024 Day Shift 0700 – 2100		
5. Leaders Intent			
Demonstrate empathy and compassion towards the community we are here to serve.			
6. General Control Objectives for the Incident (Include Alternatives)			
<ul style="list-style-type: none"> • Maintain the safety of firefighters and public as the highest priority using sound risk management. • Protect or minimize threats and loss to private property, tribal assets and community infrastructure. • Maintain and develop partnerships and relationships with tribal council, cooperating agencies and stakeholders. • Manage the fire with full suppression, confine/contain and point protection strategies. • Provide initial attack response within area of Watch Fire, in coordination with the local agency. 			
7. Weather Forecast For Period			
See attached weather forecast.			
8. General Safety Message			
When we make the decision to engage tactfully, considerations must be given to the ability to protect our most important value, our incident personnel.			
9. ATTACHMENTS (X IF ATTACHED)			
<input checked="" type="checkbox"/> Organization List - ICS 203 <input checked="" type="checkbox"/> Medical Plan - ICS 206 <input checked="" type="checkbox"/> Safety Message <input checked="" type="checkbox"/> Division Assignment Lists - ICS 204 <input checked="" type="checkbox"/> Unit Log ICS 214 <input checked="" type="checkbox"/> Radio Comm Plan – ICS 205 <input checked="" type="checkbox"/> Air Operations Summary – ICS 220 <input checked="" type="checkbox"/> WF206 8 Line <input type="checkbox"/>			
10. Prepared By		11. Approved By (Incident Commander)	
Ruth Kohler, PSCC		Todd Abel, IC (T) <i>Todd Abel</i>	

ORGANIZATION ASSIGNMENT LIST				Operations Section	
1. Incident Name		WATCH FIRE / BUCKHORN FIRE		Field Operations	RICK MILLER / PAT MOORE (T)
2. Date Prepared	7/15/2024	3. Time Prepared	2000 hrs	Planning Operations	RICK MILLER / JON MCLAUGHLIN (T)
				Strategic Operations	CRAIG DAUGHERTY
4. Operational Period				Branch Director	
Tuesday 7/16/2024 0700-2100				BRANCH	
Incident Commander and Staff					
Incident Commander	JOHN TRUETT			Division A / Z	TAD FAGERUD / MICHAEL STEVENS (T)
Deputy	TODD ABEL (T)			Buckhorn	DYLAN GUFFEY / RYAN ALLEN (T)
Safety Officer	MIKE GILLESPIE / RICKY COX / JOHN SPANARELLA (T)				
Information Officer	BILL MORSE / BRIAN SCOTT / JUDITH DYESS / ARLENE PEREA / JOEL BARNETT / KIMBERLY KASCHALK / JESSICA RICHARDSON / BRIAN EADY / ERIC BOWMAN (T) / CHARLES PASSEK (T)				
Liaison Officer	SCOTT COOKE / BRANNON EAGAR			Air Operations Branch	
Human Resource	KATE JOHNSON			Air Operations Branch Director	RAUL AGUILERA
Agency Representative					
Agency Superintendent	LEON BEN			Air Support Group Supervisor	
Agency Assistant Superintendent	RICK DI VALENTINO			Air Tactical Group Supervisor	
SCAT Forest Manager	CASSIE MOSES			Medical Section	
SCAT Fire Management Officer	DUANE CHAPMAN			Section Chief	TODD MIRANDA
BIA Fire Management Officer	CARLOS NOSIE JR			Medical Unit	DUANE DECK / CURT MCKINNEY
Resource Advisor	BLANCHE HOOKE			Finance Section	
Planning Section					
Section Chief	RUTH KOHLER / HARLEY HARMON (T)			Section Chief	MEGAN JACKSON
Situation Unit				Time Unit	ANN BACA / KAYLA CLARK
Demobilization Unit	MARSHA COLLIER			Equipment Time / Personnel Time	JO ROBERTS / CLAY WEBB / MARY COLEMAN / VALARIE SANCHEZ
Resources Unit Leader	KRISTEN PARMENTER / BETSY DRAGAN / JENNIFER HILL (T)			Cost Unit	MIKE BURNS
Status Check-in	DIANA MADRIL (T)			Comps/Claims	CASEY WARREN
Long Term Analyst	ROB BEERY			THSP	LANCE INFANGER
Fire Behavior Analyst	DAN PEARSON				
GIS Specialist	ZACH DRISCOLL / JOE BOGART / DANICA COOKE (T)				
IT Specialist	JOE VILLARREAL / COLLEEN BAILEY / BLAKE MILLER				
Meteorologist	STEVEN FANO				
Documentation Unit	CRISTY CHRISTY				
Logistics Section					
Section Chief	BILL CREWS / MIKE MARTIN / TIM DURBY				
Ordering Manager	CYNTHIA ROGERS / MIKAELA PALM				
Supply Unit	RICKY PIKE				
Facilities Unit	DELTON DAUGHERTY / GARY HAMILTON				
Base Camp	MATTHEW ROBERTSON / REBECCA VEERMAN (T)				
Ground Support Unit	TIM MABERY				
Communications Unit	MARTIN JOHNS				
Communications Tech	MICHAEL OLSEN				
Food Unit	JESSICA WARNER				
Security Manager	JASON MARSOOBIAN			Prepared by: Jennifer Hill RESL(T)	



INCIDENT Weather Forecast

FORECAST NO: 1
PREDICTION FOR: Tuesday
SHIFT DATE: July 16, 2024
FORECAST ISSUED: 1900 on July 15, 2024

NAME OF FIRE: Watch/Buckhorn
UNIT: San Carlos Agency
SIGNED: Steve Fano
Incident Meteorologist

WEATHER DISCUSSION: Seasonably hot weather will continue this week with scattered showers and thunderstorms each afternoon and evening. The best storm chances will be over the higher terrain around the Buckhorn fire. Any storms that develop will be capable of strong downburst winds, lightning and localized heavy rainfall. A few storms may also contain small hail.

WEATHER FORECAST TODAY (Tuesday):

Watch Fire: Sunny in the morning, then partly cloudy in the afternoon. A 40 percent chance of showers and thunderstorms in the afternoon.

Buckhorn Fire: Partly Sunny. A 60 percent chance of showers and thunderstorms, mainly during the afternoon.

MAX TEMPERATURES: **Watch Fire** 101-106 **Buckhorn** 82-87

MINIMUM HUMIDITY: **Watch Fire** 18-28% **Buckhorn** 26-36%

20 FT WINDS: **Watch Fire** West 6 to 12 mph **Buckhorn** West 5 - 10 mph

OUTLOOK FOR TONIGHT (Tuesday Night):

Watch Fire: Scattered showers and thunderstorms in the evening, otherwise partly cloudy. Chance of rain 30 percent.

Buckhorn Fire: Showers and thunderstorms likely in the evening, otherwise mostly cloudy. Chance of rain 60 percent.

MIN TEMPERATURES: **Watch Fire** 60-65 **Buckhorn** 55-60

MAX HUMIDITY: **Watch Fire** 50-60% **Buckhorn** 60-70%

20 FT WINDS: **Watch Fire** North to northwest 5 to 10 mph **Buckhorn** North 3 to 7 mph

OUTLOOK FOR Wednesday:

Watch Fire: Sunny in the morning, then partly cloudy in the afternoon. A 50 percent chance of showers and thunderstorms in the afternoon.

Buckhorn Fire: Mostly cloudy. An 80 percent chance of showers and thunderstorms, mainly during the afternoon.

MAX TEMPERATURES: **Watch Fire** 100-105 **Buckhorn** 83-88

MINIMUM HUMIDITY: **Watch Fire** 18-28% **Buckhorn** 25-35%


20 FT WINDS: **Watch Fire** West to northwest 6 to 12 mph **Buckhorn** West 4 to 9 mph

EXTENDED FORECAST FOR Thursday through Saturday:

Partly to mostly cloudy and seasonably hot. Scattered to numerous showers and thunderstorms in the afternoon and evening with the best chances in the higher terrain. High temps between 100 and 105 in the lower elevations and between 82 and 87 in the higher elevations. Minimum relative humidity between 17 and 27 percent lower elevations and 25 to 35 percent in the higher elevations. Sustained wind speeds will stay below 15 mph from varying directions.

Please text obs (photos or typed) to 817-907-6292. Be sure to include your division, elevation, time

Fire Behavior Forecast #3

Name of Incident: Watch & Buckhorn Fires AZ-SCA-001115/001110	Administrative Unit: San Carlos Agency
Date & Time Issued: 15 July - 1800	Operational Period: Tuesday, 16 July 2024
Weather Summary (Watch/Buckhorn): Sunny then becoming cloudy, high temp ~106°/87°, RH ~ 18%/26%, Wind 6-11 mph out of west. Isolated/scattered showers possible in the afternoon.	FBAN: DANIEL PEARSON  Digitally signed by DANIEL PEARSON Date: 2024.07.15 17:40:41 -07'00'

Fire Behavior Summary

General – Max. spot dist.: Up to 150' Prob. Ignition: 50% - shaded 60% - unshaded LAL – 4 POP – 60%	FUEL MODEL	Back [ROS] Head		Back [FL] Head	
	GR1: Low load, dry climate grass Inconsistent on Watch, meadows	0.5-1 ch/hr	4-6 ch/hr	6"	1'
	GS2: Moderate load, shrubs & grass. Upper 1/3 of slope - Buckhorn	1 ch/hr	5-8 ch/hr	1-1.5'	2-3'
	SH2: Short brush – Catclaw, acacia, kochia, fireweed.	0.5 ch/hr	1-3 ch/hr	6"	1-2'
	TL3: Ponderosa pine litter. Valley/drainages on Buckhorn	<.5 ch/hr	2-3 ch/hr	1'	1-2'

Today's General Fire Behavior:

Slow start to the day as fuel recover from the moderate overnight humidity. Clear skies and quickly rising temperatures will allow fire to transition from smoldering and creeping to active growth by late morning. Widespread cloud cover is expected to move in over both fires starting around noon which will limit aggressive fire movement.

Specific:

Buckhorn Fire: Fire is expected to continue flanking north along the Black River and east on the bottom 1/3 of the south aspect of Bull Ridge. The fire growth will be most consistent in the pine dominant fuels in the drainage bottom and likely struggle for consistent growth in the brush fuels on the upper 2/3 of the slope below the ridgeline. On the northern aspect, fire is expected to follow the conifer fuels in the canyon bottom with steady flanking, but inconsistent fuel continuity will likely keep active fire limited closer to the toe of the slopes.

Watch Fire: Very areas of heat remaining within the fire perimeter. The remaining isolated heat spots are well interior of control lines and are primarily chunks of smoldering logs. No threat to containment and unlikely to initiate active flame in adjacent fuels.

Initial Attack: Daily lightning cloud-to-ground strikes are increasing in number throughout the area. Surface fuels remain dry and available to ignite in the absence of widespread rainfall. Holdovers are somewhat unlikely due to lack of deep duff or concentrations of dead/downed fuels or closed canopy sheltering fuels, but initial attack potential is increasing due to the increased number of afternoon thunderstorms.

Air Ops/Smoke Dispersion

No inversion or residual smoke to limit operations, but cloud cover and forming storms may limit operations in the afternoon. Watch for outflow winds in the afternoon.

Safety

Lightning often strikes more than 3 miles from the center of a thunderstorm, well outside the rain shaft. Post lookouts and allow for the time needed for personnel to reach cover if t-storms begin developing near you.

DIVISION ASSIGNMENT LIST			Branch			Division/Group			
Incident Name						Buckhorn			
Buckhorn			Operational Period						
			Date: 07/16/24			Time: 0700-2100			
Operations Personnel									
Planning Operations Chief	Rick Miller / Jon McLaughlin (T)		Safety Officer			Mike Gillespie / Ricky Cox / John Spanarella (T)			
Field Operations Chief	Rick Miller / Pat Moore (T)								
Strategic Operations Chief	Craig Daugherty		Division/Group Supervisor			Dylan Guffey / Ryan Allen (T)			
Resources Assigned This Period									
Strike Team/Task Force/Resource Designator	Req#	Last Shift	Leader	# Persons	Drop Off Point/Time	Pick Up Point / Time			
CR2I SAN CARLOS 1	Buckhorn C-2	7/24	MITCHELL HUNTER	15	Point of Pines / 0700	Point of Pines / 2100			
CRW2 ALTA PACIFIC	Buckhorn C-1	7/24	JUAQUIN IBARRA	20	Point of Pines / 0700	Point of Pines / 2100			
CRW2 BLUE MOUNTAIN	Buckhorn C-3	7/27	OCTAVIO MACIEL	20	Point of Pines / 0700	Point of Pines / 2100			
FUMD SAN CARLOS FIRE MOD	Buckhorn O-8	7/24	ISAIAH WESLEY	16	Point of Pines / 0700	Point of Pines / 2100			
ENG3 AZTNF E12-37	Buckhorn E-12	7/24	JOHN BARRETT	6	Point of Pines / 0700	Point of Pines / 2100			
ENG6 AZTNF E12-45	Buckhorn E-13	7/24	CONNER SUNDBLOM	5	Point of Pines / 0700	Point of Pines / 2100			
TFLD	Buckhorn O-19	7/28	BLAKE SHAW	1	Point of Pines / 0700	Point of Pines / 2100			
TFLD(T)	Buckhorn O-17	7/24	JUSTINE GARCIA	1	Point of Pines / 0700	Point of Pines / 2100			
TFLD(T)	Buckhorn O-18	7/24	CARLTON GOSEYUN	1	Point of Pines / 0700	Point of Pines / 2100			
DO22 DIXON DOZER	Buckhorn E-14	7/26	JOHN DIXON	3	Point of Pines / 0700	Point of Pines / 2100			
DO22 DIXON2	Buckhorn E-15	7/26	RYAN JONES	3	Point of Pines / 0700	Point of Pines / 2100			
GRD2 LAP CONTRACTING	Buckhorn E-16	7/28	DAVEY TATUM	2	Point of Pines / 0700	Point of Pines / 2100			
SOFC	Watch O-43	7/27	PHIL PERKINS	1	Point of Pines / 0700	Point of Pines / 2100			
SOFC	Buckhorn O-7	7/29	RANDY PREWITT	1	Point of Pines / 0700	Point of Pines / 2100			
MED TEAM 3	Watch O-8	7/26	MIKE PLANETA	2	Point of Pines / 0700	Point of Pines / 2100			
REMS1	Watch O-9	7/27	JACK CRAMER	4	Point of Pines / 0700	Point of Pines / 2100			
AMBO 2	Watch E-30	7/27	ANTHONY WALTON	2	Point of Pines / 0700	Point of Pines / 2100			
Work Assignments (Task and Purpose)									
Task: Prep lines in advance of firing operations on the south and east end of the fire, tying into the Black river on the west side. Use selective firing to stay ahead of fire growth if necessary. Utilize aircraft to delay fire movement as required.									
Purpose: Prevent fire from crossing the Black river, and from crossing over onto Ft. Apache, increasing complexity of incident. Minimize impacts to cultural, natural and timber values.									
End State (Desired outcome and Time Frame)									
Fire is managed at a reasonable size using natural features, aviation and line construction in order to keep complexity at a manageable level.									
EMS Transport Time Risk Analysis						Note			
X	<2HRS GREEN	<3HRS YELLOW	<3HRS RED						
Special Instructions									
Division/Group Communication Summary									
Function Command	Frequency RX	Frequency TX	TONE RX	TONE TX	Channel	Function A/G Pri	Frequency RX	Frequency TX	Channel
TAC 3	172.4250	166.2375	151.4	151.4	8	A/G Sec	169.0875	169.0875	13
	168.6000	168.6000	167.9	167.9	3		171.4750	171.4750	14
Prepared by Jennifer Hill RESL(T)		Approved By Ruth Kohler PSC			Date		07/15/2024		Time
									2100

AIR OPERATIONS SUMMARY 220	Prepared By: Raul Aguilera	Prepared: 07/15/2024	Prepared Time: 1830
1. INCIDENT NAME: Watch/Buckhorn	2. OPERATIONAL PERIOD 07/16/2024	START TIME: 0700	END TIME: 2100
		SUNRISE: 0523	SUNSET: 1934

<p>3. REMARKS (Safety Notes, Hazards, Air Operations Special Equipment, etc.).</p> <p>Email all costs to: 2024.buckhorn.finance@firenet.gov cc raul.aguilera@usda.gov</p> <p>Will assist with initial attack as needed.</p> <p>Possible drone activity in the area of San Carlos.</p>	<p>4. READY ALERT AIRCRAFT: H-323/N6HE Payson Helitack</p>
---------------------------------------------------------------------------------------------------------------------------------------------------------------------------------------------------------------------------------------------------------------------------------------------------------------------------------------------------------------------------------------------------------------------------	-------------------------------------------------------------------------------------------

6. PERSONNEL	NAME	PHONE #	7. FREQUENCIES	AM	FM	8. FIXED-WING Avail/ Type/ Make-Model/ N#/ Base
AOBD	Raul Aguilera	928-245-6554				<i>AIRTANKERS: ORDER THRU ATGS OR PHOENIX DISPATCH 480-457-1552</i>
			A/A Primary	126.0250		
IWL Manager	Reggie Armstrong	208-570-9149	A/A Secondary	132.0250		
323 Manager	Gabe Ramirez	562-455-5457				
4CK Manager	Alex Willie	928-853-5235	Primary A/G		169.0875	
			Secondary A/G		171.4750	
			(Initial Attack) A/G-19		168.1250	
			(Initial Attack) A/G-61		169.2876	

9. HELICOPTERS

FAA N#	TY	MAKE/ MODEL	BASE	START	AVAIL	REMARKS	FAA N#	TY	MAKE/ MODEL	BASE	START	AVAIL	REMARKS
N61WL	3	AStar	Point of Pines	0700	0800	EU, buckets, IA							
H-323 N6HE	3	Bell 407	Cutter	0700	0800	EU, buckets, IA							
N4CK	1	S-61A	Show Low	0700	0800	Water Drops							

10. TASK/ MISSION/ ASSIGNMENT (Type/ function includes: Air Tactical, Retardant, Recon, Personnel Transport, Bucket Operations, SAR, etc.)					
TYPE/FUNCTION	PRIORITY	NAME OF PERSONNEL OR CARGO (If applicable) or instructions for tactical aircraft	MISSION START	FLY FROM	FLY TO
ATGS		Provide continuous coverage over the fire as smoke and weather permits.	TBD	TBD	Fire
Initial Attack		Support Initial Attack actions as requested.	TBD	HB	IA
Medevac		** See Medical Plan in IAP – Review during Division Breakouts **	TBD	TBD	Fire
Water Drops		As needed and approved by OPS, order through ATGS		HB	Fire
Recon		Fire reconnaissance by Ops.		HB	Fire
PSD		As needed and approved by OPS		HB	Fire

Helibase, Dip Sites, Pick Up Sites, etc.	Helibase, Dip Sites, Pick Up Sites, etc.
Tonto Lake	
Black River	
See Air Ops Map for more sites.	

Wind Restrictions

Flights above ground level	Flight Permitted in Winds Less than / Maximum Gust Spread		
	Type 1 Helicopters	Type 2 Helicopters	Type 3 Helicopters
More than 500' AGL	<50kts / Gusts: N/A	<50kts / Gusts: N/A	<50kts / Gusts: N/A
Less than 500' AGL	<40kts / Max Gust Spread: 15kts	<40 kts / Max Gust Spread: 15kts	<30kts / Max Gust Spread: 15kts

Approved by: Raul Aguilera AOBD

MEDICAL PLAN (ICS 206 WF)

Incident/Project Name		Operational Period						
Watch/Buckhorn Fires		Date/Time 07-16-2024 Day 0700-2100						
Ambulance Services								
Name	Complete Address	Phone & EMS Frequency	Advanced Life Support (ALS)					
			Yes	No				
San Carlos EMS/Fire	St 1. 101 Medicine Way Rd Peridot, AZ & St 3 Cibecue Circle, San Carlos	Dispatched via 928-475-2388 (primary line) 928-475-2389 (secondary)	Yes					
Tri-City Fire District and Ambulance Service	Canyon Station at 1300 Jesse Hays in Globe and 4280 E. Broadway in Claypool	Dispatched via 911	Yes					
Air Ambulance Services								
Name	Phone	Type of Aircraft & Capability						
Air Evac (PHI Air Medical)	1-800-321-9522	Commercial Air Ambulance: A-Star. Advanced Life Support (ALS) RN & Paramedic, Day and Night Capabilities						
Native Air / LifeNet Air Amb.	1-800-642-7828	Commercial Air Ambulance: A-Star. Advanced Life Support (ALS) RN & Paramedic, Day and Night Capabilities						
DPS Ranger (Call for Availability)	1-800-247-6337 602-223-2203	DPS Air Rescue: Bell 429. ALS Paramedic, Short Haul (Ranger 1) Hoist Capable, Day and Night Capabilities						
Hospitals								
Name Complete Address	GPS Datum – WGS 84 Coordinate Standard Degrees Decimal Minutes DD° MM.MMM' N - Lat DD°MM.MMM' W - Long		Travel Time From ICP		Phone	Helipad		Level of Care Facility
	Lat	Long	Air	Gnd		Yes	No	
Valleywise Health Medical Center 2601 E. Roosevelt St Phoenix, AZ 85008	N 33° 27.39' N	W 112° 01.46' W	33 min	1 hr 30 min	ED: 602-344-0903 Patch: 602-344-5720	Yes		Level 1 Trauma BURN CENTER
Banner Baywood 6644 E Baywood Ave Mesa, AZ 85202	N 33° 23.371' N	W 111° 52.544' W	30 min	1 hr 14 min	ED: 480-412-3700 Patch: 480-834-0566	Yes		Level 1 Trauma
Cobre Valley Regional Medical Center 5880 S Hospital Drive Globe AZ 85501	N 33° 24.377' N	W 110° 49.635' W	NA	15 min	ED: 928-402-1182 Patch: 928-425-4993	Yes		Level 4 Trauma
San Carlos Apache Healthcare 103 Medicine Way Rd Peridot, AZ 85542	N 33° 17.787' N	W 110° 25.051' W	NA	23 min	MAIN: 928-475-7300 ED: 928-475-7325	Yes		Level 4 Trauma

MEDICAL PLAN (ICS 206 WF)

Division Branch Group	Area Location Capability	***ALL TIMES APPROXIMATE***	
DIV ALPHA/ ZULU	EMS Responders & Capability:	AMBO 1 EMPF Willcut 480-254-2949 EMTF Rhees 801-425-9748 Med Team 1 EMPF Billy Ryan 602-505-4073 Med Team 2 EMPF Austin Moede 602-881-1378	
	Equipment Available on Scene:	4X4, ALS KIT / BLS KIT / O2 KIT / TRAUMA / AED	
	Medical Emergency Channel:	Ch. 7 Hilltop Ch. 8 Maverick	
	ETA for Ambulance to Scene:	15 minutes	
	Air:	33 minutes to Burn Center 30 minutes to Trauma 1 Center	
	Ground:	2 hours 30 minutes to Burn Center 2 hours 10 minutes to Trauma 1 Center	
	Approved Helispot		
	Lat		
Long			
BUCKHORN	EMS Responders & Capability:	REMS 1 EMTF Jack Cramer 616-460-7140 Med Team 3 EMTF Mike Planeta 623-332-4262	
	Equipment Available on Scene:	4X4 / UTV / ALS KIT / BLS KIT / O2 KIT / AED / Ropes / Wheeled Stretcher	
	Medical Emergency Channel:	Ch. 7 Hilltop Ch. 8 Maverick	
	ETA for Ambulance to Scene:	40 minutes	
	Air:	33 min to Burn Center 30 minutes to Trauma 1 Center	
	Ground:	5 hours 30 minutes to Burn Center 5 hours 20 minutes to Trauma 1 Center	
	Approved Helispot		
	Lat		
Long			
Point of Pines Spike	EMS Responders & Capability:	AMBO 2 EMPF Anthony Walton 951-293-3513 EMTF Ethan Shoemaker 623-202-2799	
	Equipment Available on Scene:	4X4 / ALS KIT / BLS KIT / O2 KIT / AED / Stretcher	
	Medical Emergency Channel:	Ch. 7 Hilltop Ch. 8 Maverick	
	ETA for Ambulance to Scene:	On Scene	
	Air:	33 min to Burn Center 30 minutes to Trauma 1 Center	
	Ground:	4 hours 50 minutes to Burn Center 4 hours 40 minutes to Trauma 1 Center	
	Approved Helispot		
	Lat		
Long			
ICP	EMS Responders & Capability:	Curt McKinney MEDL 928-240-0561 Duane Deck MEDL 928-607-7210 Todd Miranda MESC 928-814-9573	
	Equipment Available on Scene:	ALS KIT / BLS KIT / AED	
	Medical Emergency Channel:	Ch. 7 Hilltop Ch. 8 Maverick	
	ETA for Ambulance to Scene:	15 minutes	
	Air:	36 minutes to Burn Center 33 minutes to Trauma 1 Center	
	Ground:	1 hour 36 min to Burn Center 1 hour 17 min to Trauma 1 Center	
	Approved Helispot		
	Lat		
Long			
Curt McKinney MEDL Curt McKinney /s/	7/15/24	Ricky Cox SOFC Ricky Cox /s/	7/15/24

SAFETY MESSAGE

INCIDENT NAME: WATCH/BUCKHORN

OPS PERIOD: JULY 16TH, 2024

MAJOR HAZARDS:

- DRIVING- UTV/ATV ROUGH ROADS
- EXTENDED EXTRACT TIMES/MEDICALS
- STEEP RUGGED TERRAIN

- T-STORMS/LIGHTNING/OUTFLOWS
- WORKING WITH HEAVY EQUIPMENT
- COMMUNICATIONS

Safety Considerations

- Has LCES been established and validated?
- Are we monitoring current and predicted fire weather conditions? Are we prepared for the predicted fire behavior possibilities?
- Are we prepared to deal with a medical emergency?
- Have conditions in our work environments changed from those predicted or expected?
- Are we willing to adjust tactics and operations to SAFELY accommodate changing or changed conditions?

RESPECT THE LOCAL WILDLIFE BE BEAR AWARE!



- Store all food in critter proof containers
- Dispose of all trash properly
- Do Not Feed the wildlife
- Pack it in and Pack it out



**REMEMBER: Speed Kills Wildlife and
A Fed Bear is a Dead Bear**

NARRATIVE:

COMMUNICATION IS KEY.....

- **Validate your radio coverage constantly as you move geographically throughout the shift.**
- **Utilize Human repeaters as necessary to bolster radio coverage.**
- **LCES is not a suggestion, but a requirement for all operational engagement.**
- **Words and terminology matter.... Reference features, locations, etc., as they are labeled on the map to maintain consistency. Your life could depend on it.**

TEAM SAFETY OFFICERS: //S// Ricky Cox, Mike Gillespie, John Spanarella

Incident Radio Communications Plan (ICS 205) Day Operations				
Incident Name: Watch/Buckhorn	Southwest Critical Incident Management Team 2			Operational Period: 07/16/24
Channel	Function	Frequency	Narrowband	Assignment & Remarks
1	TAC 1	RX&TX 168.0500 rx&tx tone: 167.9	Narrow	DIV A/Z
2	TAC 2	RX&TX 168.2000 rx&tx tone: 167.9	Narrow	
3	TAC 3	RX&TX 168.6000 rx&tx tone: 167.9	Narrow	BUCKHORN
4	TAC 4	RX&TX 166.7250 rx&tx tone: 167.9	Narrow	
5	Command 5	RX:169.7500 TX:167.1000 rx&tx tone: 167.9	Narrow	Hilltop
6	Command 6	RX:170.0125 TX:165.2500 rx&tx tone: 167.9	Narrow	Maverick
7	Command 7 FIR HTOP	RX:172.4250 TX:166.2375 rx tone: 151.4 tx tone: 173.8	Narrow	SC HILLTOP WATCH FIRE
8	Command 8 FIRMAV	RX:172.4250 TX:166.2375 rx&tx tone: 151.4	Narrow	SC MAVERICK BUCKHORN FIRE
9	SC TAC 2	RX&TX:168.6750	Narrow	FOR IA ONLY
10	SC TAC 3	RX&TX:168.7750	Narrow	FOR IA ONLY
11	A/G 19	RX&TX:168.1250	Narrow	IA A/G SEC
12	A/G 61	RX&TX:169.2875	Narrow	IA A/G PRI
13	A/G Primary	RX&TX:169.0875	Narrow	Primary Air to Ground
14	A/G Secondary	RX&TX:171.4750	Narrow	Secondary Air to Ground
15	VMED28	RX&TX 155.3400 tx tone: 156.7	Narrow	Medical A/G
16	Air Guard	RX&TX 168.6250 tx tone: 110.9	Narrow	Emergency Use only

Prepared by: Martin Johns COML

Martin Johns

Note: All Command Repeaters are Linked

Comms #480-640-0716



Southwest Area
Incident Management Team 2
John Truett / Todd Abel
Contact List - Watch Fire & Buckhorn Fire

Position	Last	First	Cell Number
Check in	Madril	Diana	(520) 904-6773
Claims/Comp	Warren	Casey	(602) 390-2619
Communications Unit -- 24 hr Line			(480) 640-0716
Demob	Collier	Marsha	(928) 308-1301
Finance Equipment			(602)309-2147
Finance Personnel			(602)316-8765
Fire Behavior Analyst (FBAN)	Pearson	Dan	(928) 380-3486
Ground Support Unit Leader (GSUL)	Mabery	Tim	(928) 592-8913
Human Resource Specialist (HRSP)	Johnson	Kate	(928) 707-1166
IT Specialist (ITSS)	Villarreal	Joe	(602)663-2462
IT Specialist (ITSS)	Miller	Blake	(830) 313-3330
IT Specialist (ITSS)	Bailey	Colleen	(623) 206-6996
Liaison Officer (LOFR)	Cooke	Scott	(928) 792-9080
Liaison Officer (LOFR)	Eagar	Brannon	(928) 245-0201
Logistics Section Chief (LSC1)	Crews	Bill	(909) 771-6125
Logistics Section Chief (LSC1)	Durby	Tim	(602) 819-8695
Logistics Section Chief (LSC1)	Martin	Mike	(928) 554-5518
Medical Section Chief (MEDL)	Miranda	Todd	(928) 814-9573
Medical (MEDL)	McKinney	Curt	(928) 607-7210
Medical (MEDL)	Deck	Duane	(928) 240-0561
Operations Section Chief -- Field	Moore	Pat (T)	(970) 396-0293
Operations Section Chief -- Field/Planning	Miller	Rick	(602) 396-0147
Operations Section Chief -- Planning	McLaughlin	Jon (T)	(602) 663-3132
PIO and Fire Information Line			(928) 588-4033
Planning Section Chief (PSC1)	Kohler	Ruth	(602) 432-2573
Planning Section Chief (PSC1)	Harmon	Harley (T)	(928) 713-5262
Safety Officer (SOF1)	Gillespie	Mike	(928) 606-4696
Safety Officer (SOF1)	Cox	Ricky	(575) 644-6736
Situation Unit Leader (SITL) 209	Kohler	Ruth	(602) 432-2573
Demob	2024.watch.demob@firenet.gov		
Docs	2024.watch.docs@firenet.gov		
Finance	2024.watch.finance@firenet.gov		
Map Inputs/Requests	2024.watch.situation@firenet.gov		
Supply	2024.watch.ordering@firenet.gov		

Watch Fire Buckhorn Fire CHECK-IN



Step 1: Scan the QR code and select CHECK IN

Step 2: Submit all required documents to Finance by emailing them to 2024.watch.finance@firenet.gov or 2024.buckhorn.finance@firenet.gov

Step 3: Go find your incident supervisor

Check-In Questions?

Phone: 520-904-6773

E-Mail: 2024.watch.checkin@firenet.gov or 2024.buckhorn.checkin@firenet.gov

DEMOB INFORMATION

WATCH AND BUCKSKIN FIRES

Resources that are going through the Demob process need to know the following.

1. Demob will be handled in person, apart from virtual resources and special circumstances.
2. Please ensure that your time is caught up and has been turned into Finance prior to coming to start the demob process.
3. You will receive a demob form to take to the various sections applicable to you.
4. Please follow the time listed next to your resource number as to when to start the demob process. If you have any questions, please reach out to demob.

Marsha_collier@firenet.gov (928) 308-1301

5. Demob located with check-in.

Tentative Demobs

7/16/2024

EQUIPMENT

E-38 0800 HRSENG T6 NDSRA E-1062

7/17/2024

EQUIPMENT

E-20 0800 HRS ENG T3 DANA E LAW

E-22 0830 HRS ENG T6 J3 CONTRACTING

E-21 0900 HRS ENG T6 J3 CONTRACTING

WATCH & BUCKHORN FIRE FINANCE PROCEDURES

Watch Email: 2024.watch.finance@firenet.gov

Buckhorn Email: 2024.buckhorn.finance@firenet.gov

All documents MUST have incident name where you were ordered.

Submit documents to appropriate email address.

All time must be charged to incident you were ordered to.

Please submit your documents

ELECTRONICALLY.

(If you are completing CTRs/Shift Tickets on paper, you can take a picture, save it as a PDF and then email it.)



Watch
Email

ALL RESOURCES – When emailing, **please include your RO# in the subject line** and on all documents. Provide a contact phone number in your email.



Buckhorn
Email

At **check-in** submit the following:

- Resource Order
- Manifest/Roster
- Cooperator agreement or contract (*w/ correct resource highlighted*)
- AD Casual Hire Form
- Vehicle Inspection Form

Daily submit the following:

- CTRs
- Shift Tickets

Ensure all CTR/Shift Tickets are signed and dated.

Contracted Resources: Please ensure daily hours worked do NOT exceed operational period without including written justification and supervisor's approval.

Fillable Shift Ticket



Fillable CTR





HUMAN RESOURCE MESSAGE

Attitude

Most of us strive to do our best; however, we are imperfect creatures. We're all human, and mistakes are inevitable. That's about as guaranteed in life as taxes and death. Even if we do everything right, there still is no way to control every external variable. What we *can* control is our effort and attitude.

Attitudes impact everyone. They are contagious and have the power to motivate, inspire, and empower or create angst, divide, and frustration.

It is not practical or realistic to simply say *have a good attitude* or *be happy*. Emotions don't always work like that. Sometimes, we have to put in tremendous effort to change our attitudes.



Here are some tips to gain control of our attitude:

- Take a breath
 - Stop, breathe, think, then respond
- Take a break
 - If we feel the emotions building, take a break before they blow
- Control what you can control and the rest; let it be.
- Evaluate the effort being invested
 - Ask yourself, "Am I working hard enough on this?" or "Do I need to work harder?"
- Be aware of your feelings
 - Ask for space and time if needed
- Listen to your body and respond accordingly
- Choose what *you* do next

			7		1	
3		2		9		7
		7	8	6	2	5
	8			1		7 9
			9			6 2
2			4		5	
						6
4	7		5			
9	2			1 8		5

Kate Johnson, HRSP
(928) 707-1166
kate_johnson@firenet.gov

Forest Service Harassment Reporting Center
(844) 815-8943
7 days a week from 7 am to 11 pm Eastern

WATCH FIRE / BUCKHORN FIRE BULLETIN BOARD

THE DAILY FEED

Food served at ICP
and Point of Pines
Breakfast 0600-0800
Dinner 1800-2000

Linktree

All incident info in one place!

Check-In/
Briefing / IAP
Finance/MAPS



REMINDER - Check-in and Finance
are **VIRTUAL**

PIO Information

We want your fire photos!

Please scan the Linktree QR code
or email them to:
2024.watch@firenet.gov

EQUIPMENT INSPECTIONS
are located at ICP

FINANCE QUESTIONS?

CALL US!!

EQUIPMENT: 602-309-2147
PERSONNEL: 602-316-8765
COMP/CLAIMS: 605-390-2619



Camping

Ground Support

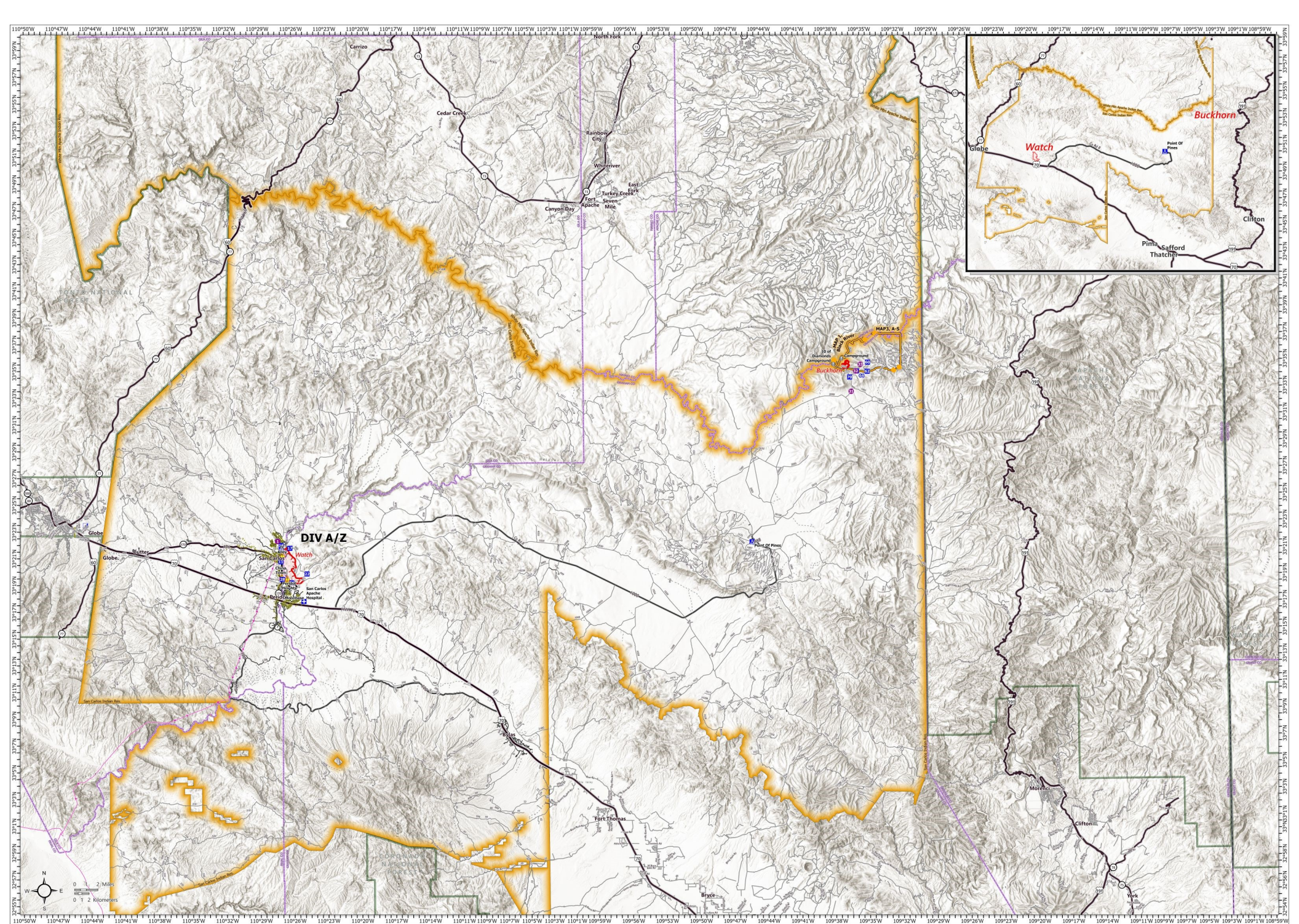
Supply

Food

ICP

Rolloff

Keefe



TRANSPORTATION

Watch AZSCA-001115 07/16 DAY

2162 acres at 7/12/2024 1026hr

- Helipad
- Medical
- Incident Command Post
- Drop Point
- Camp
- Value at Risk
- Fire Station
- Bridge
- Hazard Tree
- Hazard (Downed Power Lines)
- Management Action Point
- Contained
- Uncontained
- Wildfire Daily Fire
- Perimeter
- Structure
- Transmission Line
- Administrative PS
- Boundary
- State Boundary
- County Boundary
- IGA
- Highway
- Local Connecting Road
- Primary/Secondary Route
- Local Dirt Road
- 4WD
- Unimproved
- Local Road

SOUTHWEST AREA

MANAGEMENT TEAM

1101.01 - 08/2023 - 10/2024 1026hr - Assets from Model - North American 1983 Data, Lanting 1026

MEDICAL PLAN (ICS 206 WF)

Controlled Unclassified Information//Basic

Medical Incident Report

FOR A NON-EMERGENCY INCIDENT, WORK THROUGH CHAIN OF COMMAND TO REPORT AND TRANSPORT INJURED PERSONNEL AS NECESSARY.

FOR A MEDICAL EMERGENCY: IDENTIFY ON SCENE INCIDENT COMMANDER BY NAME AND POSITION AND ANNOUNCE "MEDICAL EMERGENCY" TO INITIATE RESPONSE FROM IMT COMMUNICATIONS/DISPATCH.

Use the following items to communicate situation to communications/dispatch.

1. CONTACT COMMUNICATIONS / DISPATCH (**Verify correct frequency prior to starting report**)

Ex: "Communications, Div. Alpha. Stand-by for Emergency Traffic."

2. INCIDENT STATUS: Provide incident summary (including number of patients) and command structure.

Ex: "Communications, I have a Red priority patient, unconscious, struck by a falling tree. Requesting air ambulance to Forest Road 1 at (Lat./Long.) This will be the Trout Meadow Medical, IC is TFLD Jones. EMT Smith is providing medical care."

Severity of Emergency / Transport Priority	<input type="checkbox"/> RED / PRIORITY 1 Life or limb threatening injury or illness. Evacuation need is IMMEDIATE Ex: Unconscious, difficulty breathing, bleeding severely, 2 ^o – 3 ^o burns more than 4 palm sizes, heat stroke, disoriented. <input type="checkbox"/> YELLOW / PRIORITY 2 Serious Injury or illness. Evacuation may be DELAYED if necessary. Ex: Significant trauma, unable to walk, 2 ^o – 3 ^o burns not more than 1-3 palm sizes. <input type="checkbox"/> GREEN / PRIORITY 3 Minor Injury or illness. Non-Emergency transport Ex: Sprains, strains, minor heat-related illness.
Nature of Injury or Illness & Mechanism of Injury	Brief Summary of Injury or Illness (Ex: Unconscious, Struck by Falling Tree)
Transport Request	Air Ambulance / Short Haul/Hoist Ground Ambulance / Other
Patient Location	Descriptive Location & Lat. / Long. (WGS84)
Incident Name	Geographic Name + "Medical" (Ex: Trout Meadow Medical)
On-Scene Incident Commander	Name of on-scene IC of Incident within an Incident (Ex: TFLD Jones)
Patient Care	Name of Care Provider (Ex: EMT Smith)

3. INITIAL PATIENT ASSESSMENT: Complete this section for each patient as applicable (start with the most severe patient)

Patient Assessment: See IRPG page 106

Treatment:

4. TRANSPORT PLAN:

Evacuation Location (if different): (Descriptive Location (drop point, intersection, etc.) or Lat. / Long.) Patient's ETA to Evacuation Location:

Helispot / Extraction Site Size and Hazards:

5. ADDITIONAL RESOURCES / EQUIPMENT NEEDS:

Example: Paramedic/EMT, Crews, Immobilization Devices, AED, Oxygen, Trauma Bag, IV/Fluid(s), Splints, Rope rescue, Wheeled litter, HAZMAT, Extrication

6. COMMUNICATIONS: Identify State Air/Ground EMS Frequencies and Hospital Contacts as applicable

Function	Channel Name/Number	Receive (RX)	Tone/NAC *	Transmit (TX)	Tone/NAC *
COMMAND					
AIR-TO-GRND					
TACTICAL					

7. CONTINGENCY: **Considerations:** If primary options fail, what actions can be implemented in conjunction with primary evacuation method? Be thinking ahead.

8. ADDITIONAL INFORMATION: Updates/Changes, etc.

REMEMBER: Confirm ETA's of resources ordered. Act according to your level of training. Be Alert. Keep Calm. Think Clearly. Act Decisively.