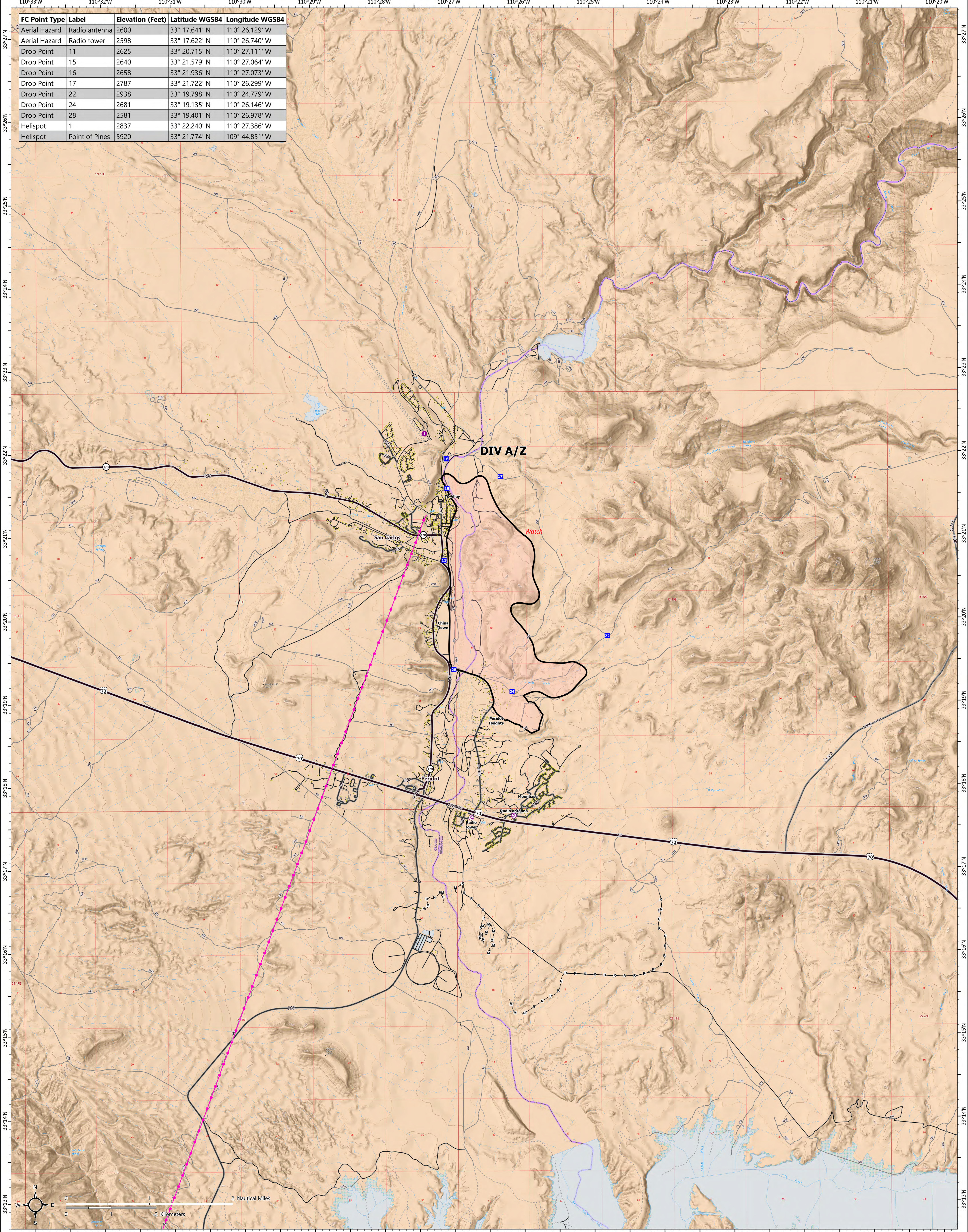


FC Point Type	Label	Elevation (Feet)	Latitude WGS84	Longitude WGS84
Aerial Hazard	Radio antenna	2600	33° 17.641' N	110° 26.129' W
Aerial Hazard	Radio tower	2598	33° 17.622' N	110° 26.740' W
Drop Point	11	2625	33° 20.715' N	110° 27.111' W
Drop Point	15	2640	33° 21.579' N	110° 27.064' W
Drop Point	16	2658	33° 21.936' N	110° 27.073' W
Drop Point	17	2787	33° 21.722' N	110° 26.299' W
Drop Point	22	2938	33° 19.798' N	110° 24.779' W
Drop Point	24	2681	33° 19.135' N	110° 26.146' W
Drop Point	28	2581	33° 19.401' N	110° 26.978' W
Helispot	1	2837	33° 22.240' N	110° 27.386' W
Helispot	Point of Pines	5920	33° 21.774' N	109° 44.851' W

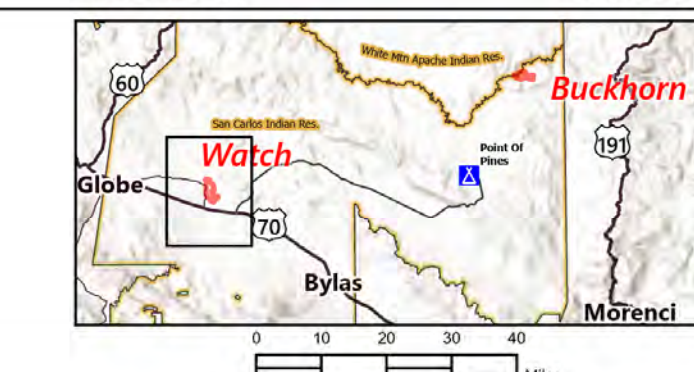


AIR OPERATIONS

Watch AZSCA-001115 07/20 DAY
2162 acres at 7/12/2024 1026hr

124000 - SNG GSS - 7/19/2024 1846 - Ares from Misd - North American 1983 Datum, LatLong Grid

- Wildfire Daily Fire Perimeter
 Contained
 Completed Hand Line
- Completed Mixed
 Completed Road as Line
• IR Isolated Heat Source
- Aerial Hazard
■ Helispot
■ Drop Point
■ Structure
- Highway
 Local Connecting Road
 County Boundary
- Bureau of Indian Affairs (BIA)
— Transmission Line
— Primary/secondary Route?
- Local Dirt Road
 4WD
 Unimproved
 Local Road



SOUTHWEST AREA
INCIDENT MANAGEMENT TEAM

Watch Maps

Buckhorn Maps