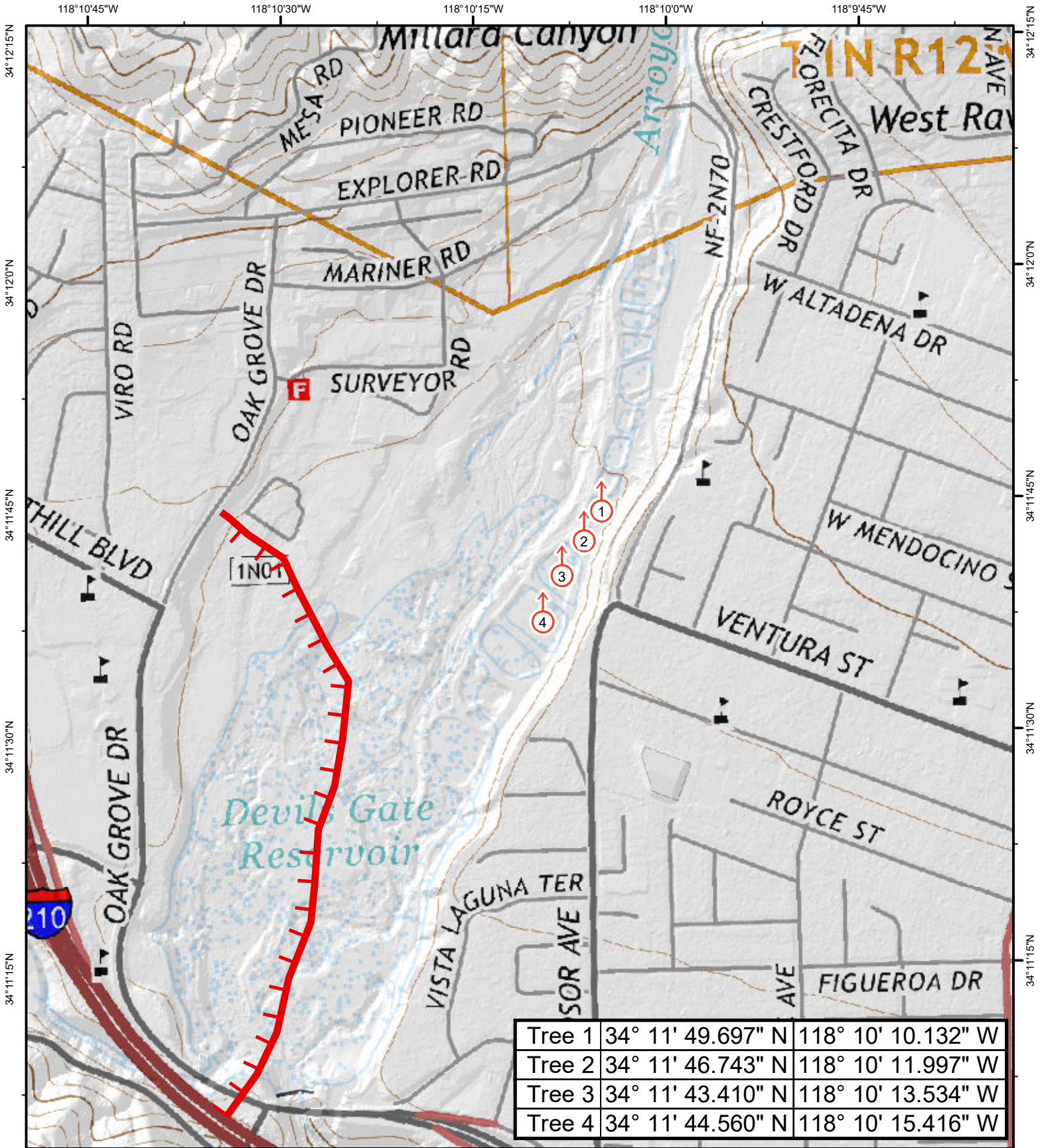




# Reservoir Incident



118°10'45"W

118°10'30"W

118°10'15"W

118°10'0"W

118°9'45"W



**F** Fire\_Line



- 1, N34° 11' 44.742", W118° 10' 5.736"
- 2, N34° 11' 42.827", W118° 10' 7.156"
- 3, N34° 11' 40.602", W118° 10' 8.921"
- 4, N34° 11' 37.644", W118° 10' 10.483"

Coordinate System: NAD 1983 California Teale Albers FtUS  
 Latitude Of Origin: 0.0000  
 Units: Foot US

1:10,000

0 300 600 1,200 Feet

