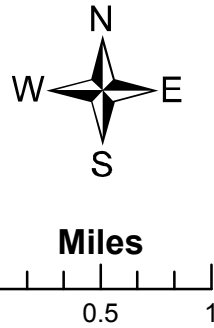
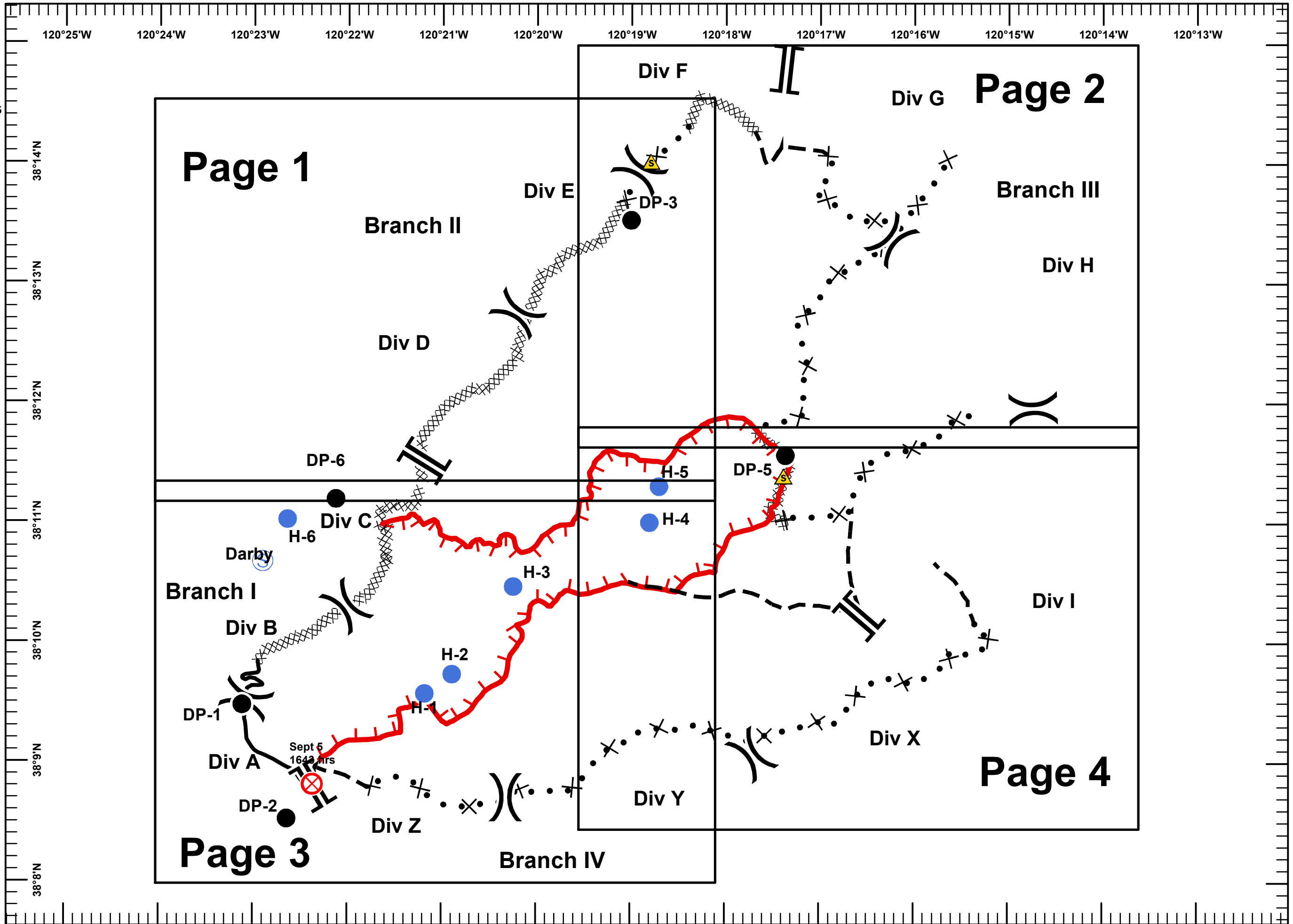


Darby Incident
CA-TCU-006632
September 9, 2001
24 Hr Shift
NAD 83 Datum
3,992 Acres 9/8 2100 Hrs
Index Map

- Legend**
-)) Division
 -]] Branch
 - Drop Point
 - ⊗ Fire Origin
 - Helispot
 - ⊙ Staging Area
 - ▲ Safety Zone
 - Completed Line
 - Uncontrolled Fire Edge
 - XXXXX Completed Dozer Line
 - - - Planned Fire Line
 - ⊗ Proposed Dozer Line
 - Map Page Outline

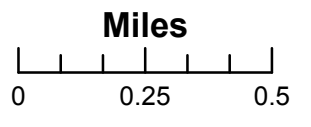
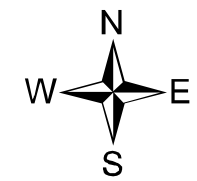
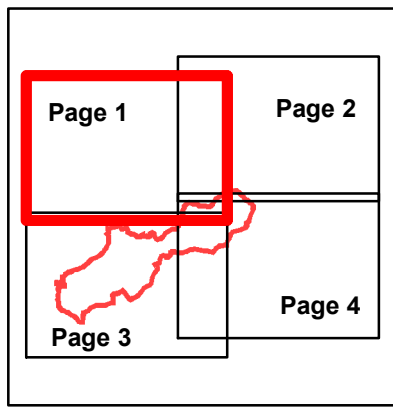


RJS
 Sept 8, 2001
 2200 Hours

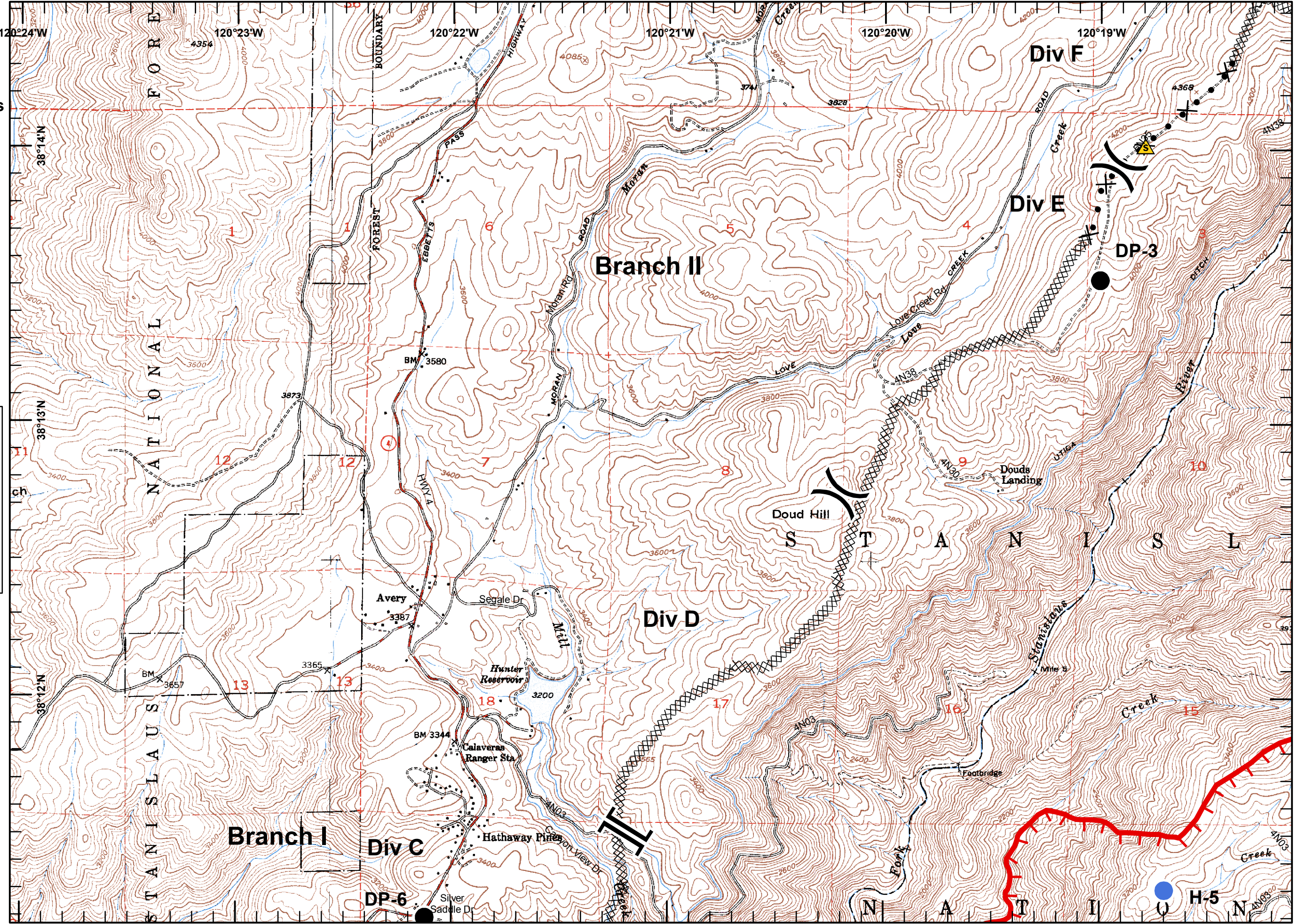


Legend

- Division
- Branch
- Drop Point
- Fire Origin
- Helispot
- Staging Area
- Safety Zone
- Completed Line
- Uncontrolled Fire Edge
- Completed Dozer Line
- Planned Fire Line
- Proposed Dozer Line

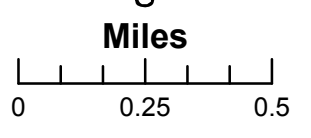
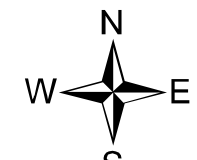
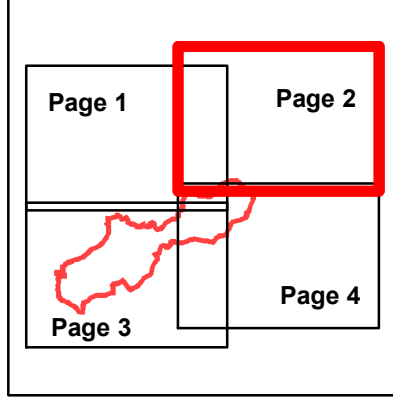


RJS
 Sept 8, 2001
 2100 Hours

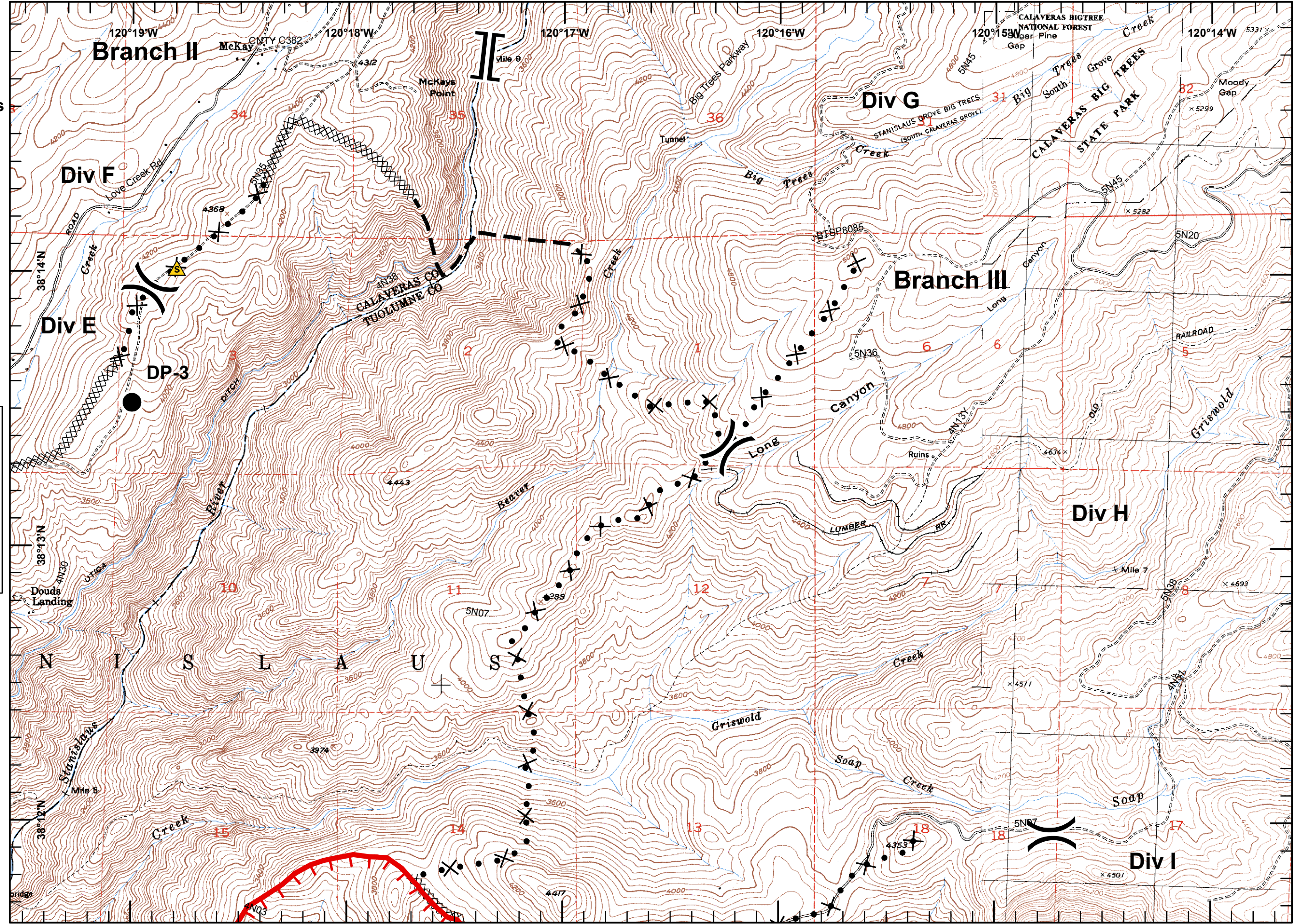


Legend

- Division
- Branch
- Drop Point
- Fire Origin
- Helispot
- Staging Area
- Safety Zone
- Completed Line
- Uncontrolled Fire Edge
- Completed Dozer Line
- Planned Fire Line
- Proposed Dozer Line

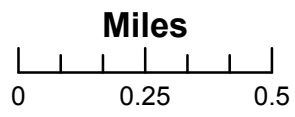
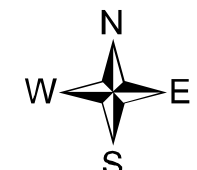
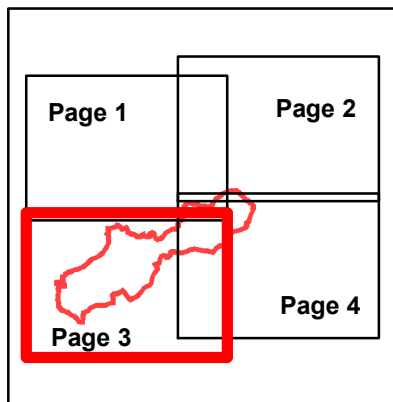


RJS
 Sept 8, 2001
 2100 Hours

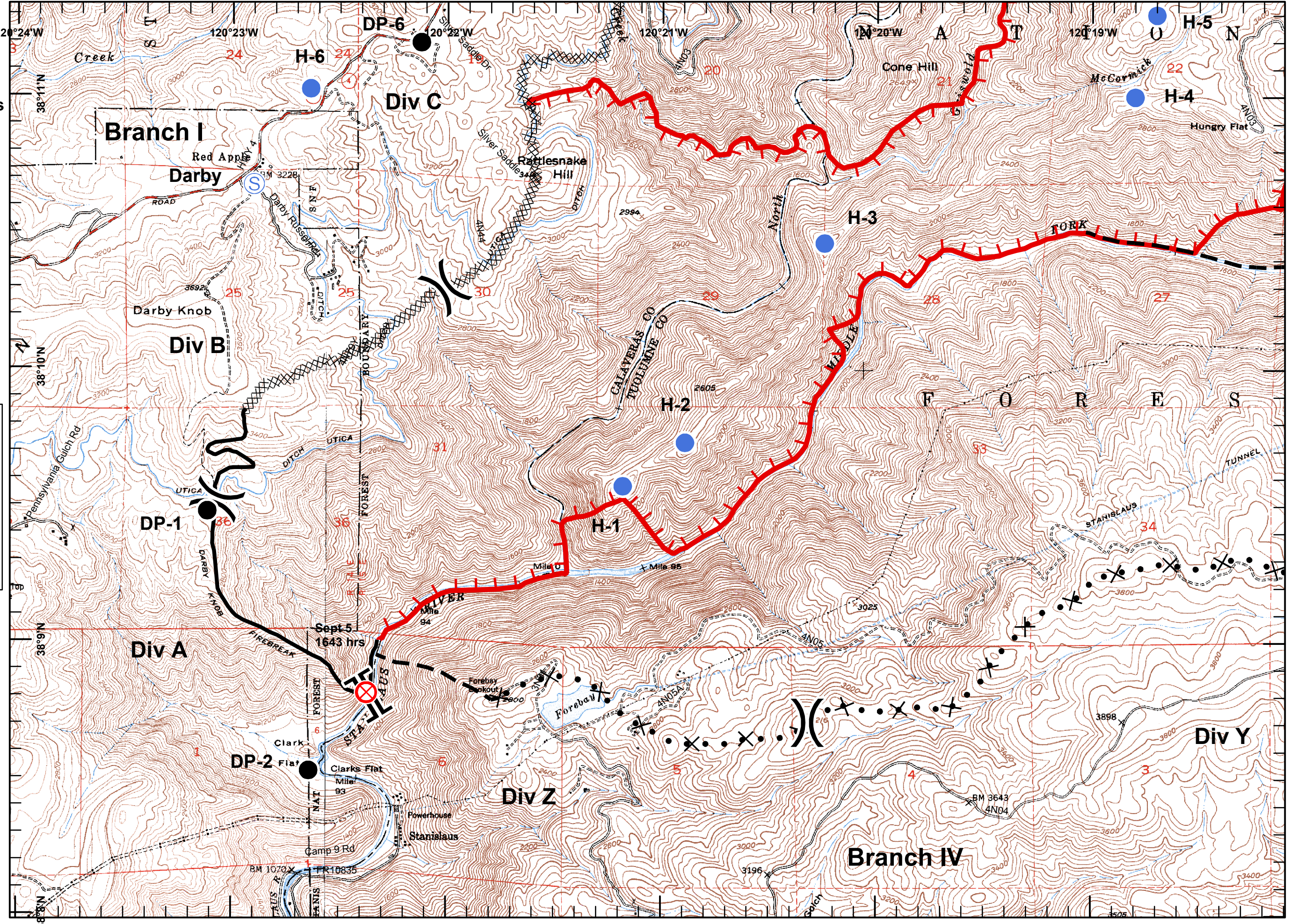


Legend

- Division
- Branch
- Drop Point
- Fire Origin
- Helispot
- Staging Area
- Safety Zone
- Completed Line
- Uncontrolled Fire Edge
- Completed Dozer Line
- Planned Fire Line
- Proposed Dozer Line

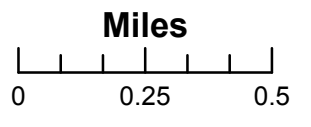
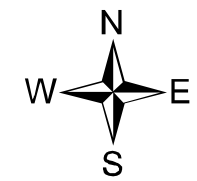
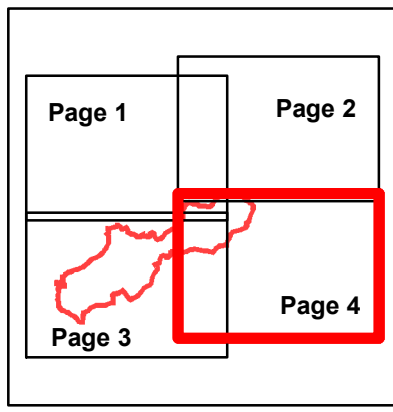


RJS
 Sept 8, 2001
 2100 Hours



Legend

- Division
- Branch
- Drop Point
- Fire Origin
- Helispot
- Staging Area
- Safety Zone
- Completed Line
- Uncontrolled Fire Edge
- Completed Dozer Line
- Planned Fire Line
- Proposed Dozer Line



RJS
 Sept 8, 2001
 2100 Hours

