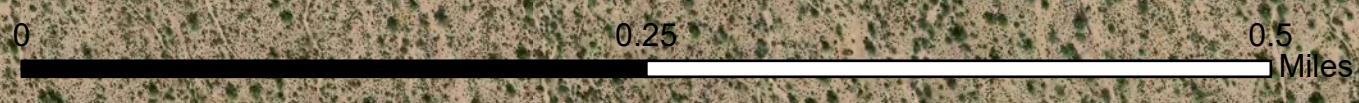
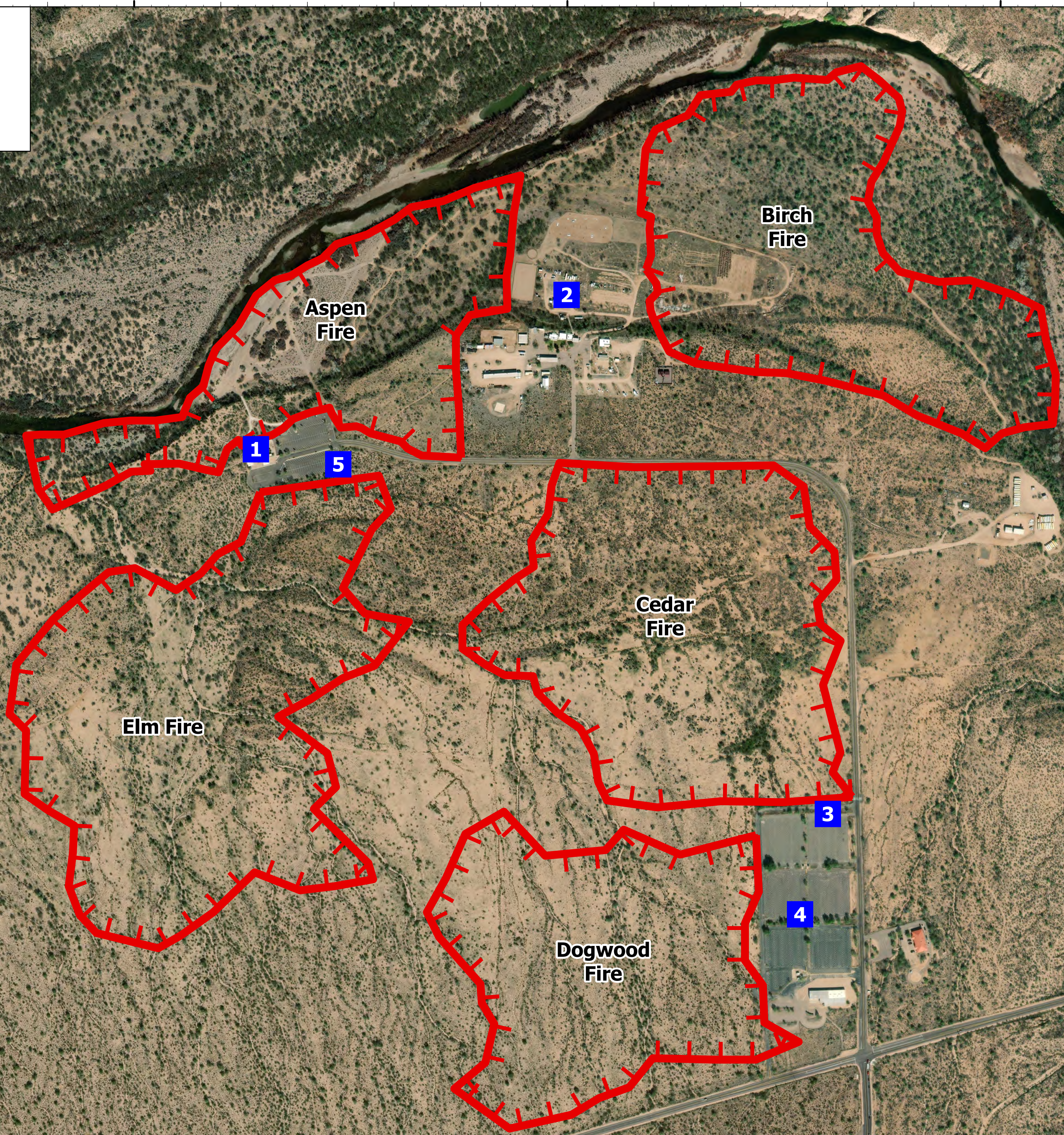


Operations

Mesa
S-373
12/05/22 Day

- Drop Point
- Uncontained



ARley
12/4/2022 2:12:1
Acres from IR and GPS
NAD: 1983 2011 Datum, LatLong Grid

33°33.5'N

33°33'N

33°32.5'N

111°37.5'W

111°37'W

111°36.5'W

111°37.5'W

111°37'W

111°36.5'W

33°33.5'N

33°33'N

33°32.5'N