



INCOMING RESOURCE BRIEFING PACKET

Briefing Packet &
Finance Document Links



<https://linktr.ee/shfmobcenter>

Contents

Contents

| | |
|--|----|
| Introduction..... | 2 |
| Mobilization Center..... | 2 |
| About the Shasta-Trinity National Forest..... | 2 |
| Fire Organization..... | 3 |
| Section 1 – Communications and Radios | 3 |
| Section 2 – Forest Fire Organization..... | 6 |
| Section 3 – Duty Officer and Dispatch Contact Info | 7 |
| Section 4 – Fire Behavior & Weather / Terrain / Fuels..... | 7 |
| Shasta-Trinity NF Fire Behavior Summary..... | 7 |
| Forest-Wide Fire Behavior Factors | 7 |
| Fire Danger Rating Areas | 9 |
| FDRA Boundaries on the SHF..... | 9 |
| Pocket Cards..... | 10 |
| Section 5 – Fire Suppression..... | 13 |
| Section 6 – Hazards and Potential..... | 14 |
| Section 7 – Directions to Stations..... | 16 |
| Section 8 – Maps | 18 |

Introduction

Welcome to the Shasta-Trinity National Forests(SHF); we are thankful for your help!

Please take the time to read this guide and receive a thorough briefing before making your module available to Redding ECC for initial attack.

Mobilization Center

Unless specified on your Resource Order, you will check in at the SHF Mobilization Center (Mob Center). The Mob Center address is 2370 Twin View Blvd, Redding, CA.

Steps to check in:

1. Notify Redding ECC (phone number on your resource order) and your home unit that you have arrived at the Mobilization Center safely and are about to check in.
2. Tell the Status/Check-In person at the front door that you are ready to get checked in. Give them a copy of your resource order. They will then direct you to the Ground Support Unit.
3. Get vehicles inspected by the mechanic. If they do not pass, we cannot proceed with checking you in.
4. After passing, go back to the Check-in person with your Inspection papers.
5. Check-in will require you to complete an online check-in at <https://linktr.ee/shfmobcenter> . This website will also serve as the portal through which you will submit all your times, manifests, contracts, and other relevant documents.

At the Mob Center, mechanics will inspect your vehicles, the Finance section will post rosters and times into e-Isuite, and you will receive hard copies of this Briefing Package and a Forest Map (QR codes for digital maps are in [Section 8—Maps](#)).

Good legal descriptions and fire size-ups are essential if we assign you as an Initial Attack IC. Relay this information through dispatch; they or the Forest Duty Officer (FDO) will, in turn, give you further instructions regarding management direction for the fire. The local unit's initial briefing will provide more direction. You can find the current Letter of Delegation of Authority for Federal incident commanders at the SHF Mob Center or with district chiefs.

Please remember that you represent your agency and the local unit to which you are assigned. The public will not make any distinction. The locals will remember both positive and negative experiences with you, and the local agency will have to live with the consequences for the long term. Your role in fostering positive relationships with the local community is crucial and highly valued.

Upon arrival and departure, mechanics and Agency Fleet personnel will thoroughly inspect your vehicles, engines, etc. Except for cases of driver error, the fire will pay for any damage due to your assignment here and not the home unit. You will also be able to restock engines and other equipment after fires, either from local caches or through fire orders, ensuring your equipment is always ready for the next operation.

About the Shasta-Trinity National Forest

The Shasta–Trinity National Forest is the largest National Forest in California, at 2.2 million acres, and it covers parts of Trinity, Shasta, Siskiyou, Tehama, Modoc, and Humboldt counties. Redding is the largest city near the Forest, with a population of 91,794 in 2017, and it is also the location of the Forest Headquarters.

From its southern border along Interstate 5, the Shasta-Trinity National Forest is 160 miles north of Sacramento, California, and 60 miles from the Oregon State border to the north. It encompasses five designated wilderness areas (Castle Crags, Chanchellulla, Mount Shasta, Trinity Alps, and Yolla Bolly-Middle Eel), hundreds of mountain lakes, and over 6,278 miles of streams and rivers. Major features include:

- Shasta Lake (the largest human-made lake in California with 365 miles of shoreline).
- Mount Shasta at an elevation of 14,179 feet.
- A 154-mile section of the Pacific Crest Trail.

Fire Organization

Primary protection agencies with responsibility for wildland fires include Federal, State, and Local Government departments. Direct Protection Areas (DPAs) are geographic areas that determine which department or agency is responsible for fire suppression. <https://gacc.nifc.gov/oscc/cwccg/gis.php> has California DPA maps. Fire resources include 20 engines, two hand crews, two dozers, three water tenders, nine prevention/patrol units, one helicopter, and six lookouts.

The Forest is organized into seven battalions that correspond with the following ranger districts:

- Battalion 1 – Yolla Bolla RD
- Battalion 2 – Hayfork RD
- Battalion 3 – Big Bar RD
- Battalion 4 – Weaverville RD
- Battalion 5 – Shasta Lake RD
- Battalion 6 – Mt. Shasta RD
- Battalion 7 – McCloud RD

Section 1 – Communications and Radios

The initial briefing will cover communications and radio frequencies. If you are unsure about which frequencies to use, how to contact Redding Dispatch (RICC), repeater locations, or any other information, please do not hesitate to ask.

The SHF's radio plan is organized into groups, with each District assigned its own set of frequencies. During your upcoming briefing, you will receive information on at least two groups: Group 1, which covers the most common Forest Frequencies, and the group specific to your assigned District. For instance, if your assignment is to cover the Shasta Lake District, you will need to familiarize yourself with Group 5 information.

Different counties and local fire departments have different frequencies. Your host unit will inform you about the required frequencies and their corresponding details. It is important to remember that CALFIRE uses Tone 16 for all its Tactical and Air-to-Ground frequencies, and CALCORD must use Tone 6.

You can find a general frequency group for the Forest and a map of the National Forest areas with repeaters on the following two pages. Please ensure you have a copy of the radio guide and are familiar with the frequencies and groups relevant to the area where you will be working.

Remember, communications must be established before engaging the fire.

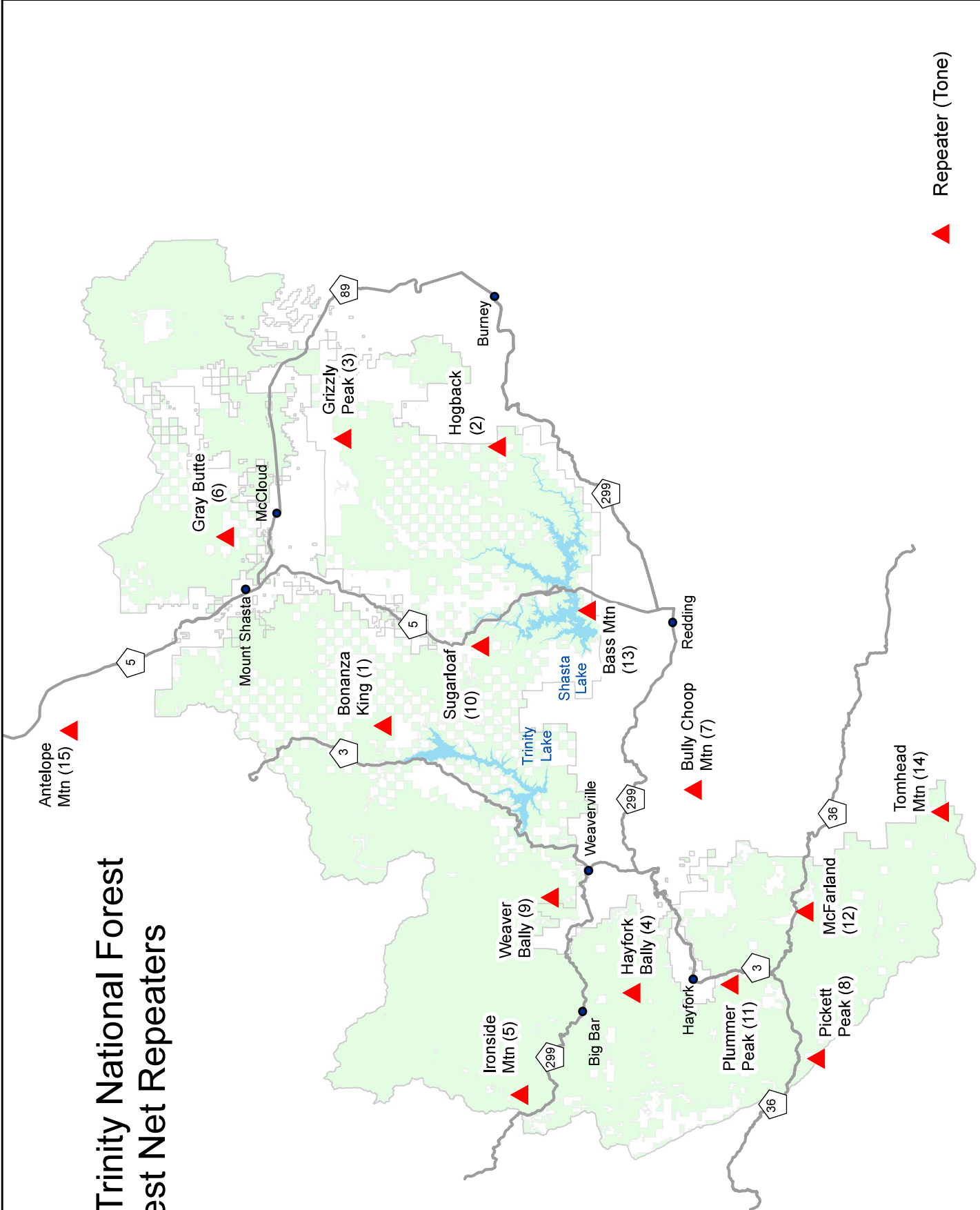
Shasta-Trinity NF Group 1 Radio Frequencies

| CH | Alpha ID | Use | Receive | Transmit | Tone(s) | Group(s) | Band-Width |
|----|----------|------------------------------------|----------|----------|----------|------------------|------------|
| 1 | SHF-DIR | Shasta-Trinity NF -Direct | 171.5750 | 171.5750 | | 1,13 | N |
| 2 | SHF-R | Shasta-Trinity NF- Repeater | 171.5750 | 165.0125 | 1-16 | 1-4,6,7,13 | N |
| 3 | SFMU | South Fork Mgt. Unit Net | 167.2250 | 167.2250 | 7 | 1,2 | N |
| 4 | TRMU | Trinity River Mgt. Unit Net | 168.9625 | 168.9625 | 7 | 1,3 | N |
| 5 | SMMU | Shasta McCloud Mgt. Unit Net | 166.9875 | 166.9875 | 7 | 1,6,7 | N |
| 6 | SLMU | Shasta Lake District Net | 167.7250 | 167.7250 | 7 | 1,4 | N |
| 7 | SERV-D | Shasta-Trinity NF Service Net DIR. | 171.5000 | 171.5000 | | 1,13 | N |
| 8 | SERV-R | Shasta-Trinity NF Service Net Rpt. | 171.5000 | 164.8250 | 1,4,6,12 | 1-4,6 | N |
| 9 | R5 TAC4 | R5 Tactical 4 | 166.5500 | 166.5500 | | 1-4,6,8-11 | N |
| 10 | R5 TAC5 | R5 Tactical 5 | 167.1125 | 167.1125 | | 1-4, 6,8,9,11 | N |
| 11 | R5 TAC6 | R5 Tactical 6 | 168.2375 | 168.2375 | | 1-4,6,8-11 | N |
| 12 | R5 TAC7 | R5 Tactical 7 | 167.9625 | 167.9625 | | 1-4,6,8-11 | N |
| 13 | CALCORD | CALCORD - TAC | 156.0750 | 156.0750 | 6 | 1-7 | N |
| 14 | R5 AG08 | Air to Ground, CA, North Secondary | 166.8750 | 166.8750 | | 1-6,8-11 | N |
| 15 | R5 AG43 | Air to Ground, CA, North Primary | 167.6000 | 167.6000 | | 1-6,8-11 | N |
| 16 | AIRGUARD | AIRGUARD | 168.6250 | 168.6250 | 1 | 1 | N |

Shasta-Trinity NF Tones

| Tone | CTCSS | Repeater Name |
|------|-------|----------------------------|
| 1 | 110.9 | Bonanza King |
| 2 | 123.0 | Hogback |
| 3 | 131.8 | Grizzly Peak |
| 4 | 136.5 | Hayfork Bally |
| 5 | 146.2 | Ironsides |
| 6 | 156.7 | Grey Butte |
| 7 | 167.9 | Bully Choop |
| 8 | 103.5 | Pickett Peak |
| 9 | 100.0 | Oregon |
| 10 | 107.2 | Sugarloaf |
| 11 | 114.8 | Plummer Peak |
| 12 | 127.3 | McFarland |
| 13 | 141.3 | Bass Mtn |
| 14 | 151.4 | Tomhead Mtn |
| 15 | 162.2 | Antelope |
| 16 | 192.8 | Used for CALFIRE TAC & A/G |

Shasta-Trinity National Forest Forest Net Repeaters



 Not to Scale
 Projection: UTM Zone 10N (NAD 83)
 Updated April 2015

Section 2 – Forest Fire Organization

Headquarters

| | | |
|-----------------|---------------------------|--------|
| Rachel Birkey | Forest Supervisor | |
| Vacant | Deputy Forest Supervisor | |
| Kevin Osborne | Forest Chief | CH-1 |
| Alex McBath | Deputy Chief - Operations | CH-2 |
| Vacant | Deputy Chief- Fuels | CH-3 |
| Ira Graves | Zone Aviation Officer | CH-4 |
| Richie Reposa | Workforce Development | DIV-81 |
| Anna Wright | Fire Ecologist | DIV-82 |
| Andrea Saltzman | Fire Planner | DIV-83 |
| Julie Bell | Training Officer | BC-81 |
| Ryan Reginato | Forest Safety Specialist | SOF-2 |
| Sheila Linden | Fire Admin Clerk | |

Dispatch

| | | |
|-------------|---------------------|-------|
| Jason Colby | ECC Center Manager | DIV-8 |
| Joni Olson | ECC Battalion Chief | BC-84 |
| Shay Farmer | ECC Battalion Chief | BC-85 |

Superintendents

| | | |
|---------------|---------------------------------|----------|
| Matt McGinley | Trinity Helitack Superintendent | Supt-506 |
| Jason Ballard | Trinity IHC Superintendent | Supt-11 |
| Joe Bogdan | Shasta Lake IHC Superintendent | Supt-5 |
| Dan Mallia | Redding IHC Superintendent | Supt-21 |

Yolla Bolla & Hayfork Districts

| | | |
|----------------|-------------------------------|-----------|
| Troy Boudro | Deputy Ranger | Ranger-41 |
| Mike Anderson | Division Chief | DIV-2 |
| Tristan Dias | Battalion Chief – Yolla Bolla | BC-11 |
| Jason O’Bannon | Battalion Chief – Hayfork | BC-21 |
| Adam Koeller | Battalion Chief – Hayfork | BC-22 |
| Janice Brown | Fire Admin Clerk | |

Big Bar & Weaverville Districts

| | | |
|--------------|-------------------------|----------|
| Tara Jones | Ranger | Ranger-4 |
| Tim Ritchey | Division Chief | DIV-3 |
| Josh Wright | Battalion Chief | BC-31 |
| Ryan Regelin | Battalion Chief | BC-41 |
| Casey Dunn | Battalion Chief – Fuels | BC-42 |

Shasta Lake District

| | | |
|----------------|-------------------------|----------|
| Ben Sundal | Ranger | Ranger-5 |
| Pat Bell | Division Chief | DIV-5 |
| Brent Kissick | Battalion Chief | BC-51 |
| Justin Regelin | Battalion Chief – Fuels | BC-52 |
| Andrea Shuster | Fire Admin Clerk | |

Mount Shasta & McCloud Districts

| | | |
|----------------|-----------------------------|----------|
| Joseph Rodarme | Ranger | Ranger-6 |
| Drew Graham | Division Chief | DIV-7 |
| Mike Carter | Battalion Chief – Mt Shasta | BC-61 |
| Josiah Obst | Battalion Chief – McCloud | BC-71 |
| Dave Wolfe | Fire Admin Clerk | |

Air Attack Base

| | | |
|--------------|-------------------------|-------|
| Kelly Mathis | Air Tanker Base Manager | BC-91 |
| Taylor Smith | Assistant Base Manager | |

Section 3 – Duty Officer and Dispatch Contact Info

Redding Interagency Communications Center can be reached at (530)226-2400 while staffed. During periods where RICC is unstaffed, particularly after hours during non 24 hour staffing, utilize (530)226-2499 to contact an emergency night contact.

The Mobilization Center Manager will provide you with the appropriate Duty Officer contact information.

Section 4 – Fire Behavior & Weather / Terrain / Fuels

Shasta-Trinity NF Fire Behavior Summary

The Shasta-Trinity National Forest encompasses a highly variable landscape ranging from the low foothills of the northern Sacramento Valley at 1,000 ft elevation to alpine areas of the Southern Cascades on the slopes of Mt. Shasta, at an elevation of 14,179 feet. This wide variation in elevation brings with it a diversity of fuel types and weather patterns. As a result, firefighters need to understand their location within the forest to comprehend the factors that influence local fire behavior.

Given the wide variations in weather, fuels, topography, and ignition sources across the forest, there are still consistent factors that apply across the entire landscape.

Forest-Wide Fire Behavior Factors

Weather

a. Weather Summary

The Shasta-Trinity National Forest has a Mediterranean climate characterized by cool, wet winters and hot, dry summers, with most precipitation falling from November through March. Precipitation drops off quickly from April through June, with late spring and summer precipitation typically coming only from thunderstorms. The very hot and dry summer weather of the Mediterranean climate results in a peak fire season that runs from July through September in a typical year.

b. Weather Watchouts

Each area of the forest has specific weather scenarios that can influence fire behavior. However, there are patterns to watch out for across the forest:

- North wind events are common from late summer/early fall through the winter. These are typically dry, offshore North to East winds that bring very poor overnight recoveries and strong gusty winds.
- Poor overnight humidity recoveries are typical during strong high-pressure ridges, resulting in rapid fuel drying and increased fire behavior. Strong thermal belts are also associated with high-pressure ridges and often result in areas of very poor overnight humidity recovery and extended periods of fire activity. Forest-wide, if overnight recovery is below 60%, large fire growth potential is elevated.
- Outflow winds from summer thunderstorms are unpredictable and are common when either frontal or convective-driven storms develop. Dry thunderstorms occur across the forest

during the dry summer and fall months.

- Large river canyons are present in all FDRAs and pose specific local challenges to fire management; see the summary for the local area for specifics within each FDRA.

Fuels

Fuel types can vary widely across the landscape, but fuel moisture is a crucial factor influencing fire behavior across the Forest. Generally, when live fuel moisture levels in brush species drop below 100%, it indicates that fire activity may be elevated and that these brush species will be more likely to ignite. Specifically, live fuel moisture levels in Manzanita below 80% are critical, indicating that rapid fire spread through these brush fuels is expected. Moreover, even in timber fuels, the presence of the brush component serves as a ladder fuel and often drives fire growth throughout the Forest.

Topography

Topography across the Forest is highly variable, with the steep, dissected terrain of the Klamath Mountains dominating the western portions of the forest, foothill, and river canyons dominating the areas bordering the Sacramento Valley, and tall peaks / individual mountains and volcanic flats typical of the southern Cascades dominating the northeastern portion of the Forest. See individual FDRA summaries for more details.

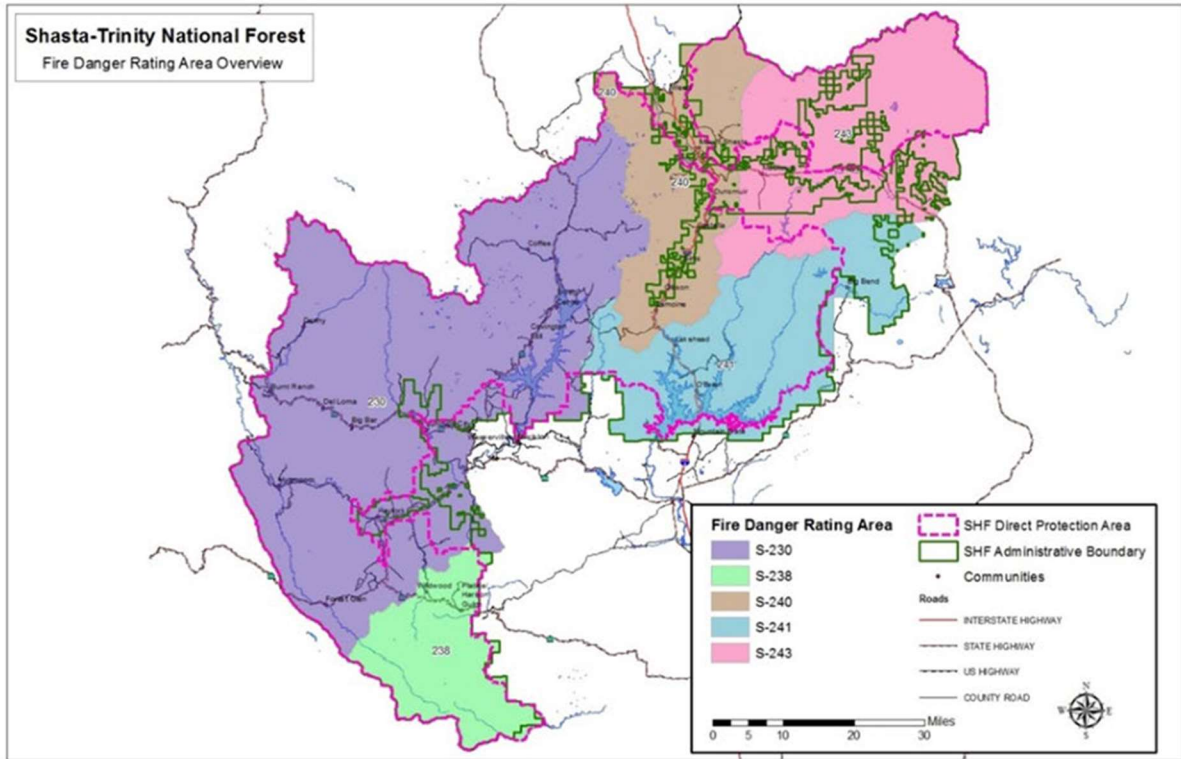
Ignition Sources

The entire forest is highly susceptible to summer dry lightning events, with all areas having a history of being affected by lightning fires. Human-caused ignitions are closely linked to highway corridors, high-density recreational areas, and locations with heavy usage.

Fire Danger Rating Areas

The forest is broken into 5 Fire Danger Rating Areas (FDRAs), each representing areas of generally similar fuels, topography, and weather. The table and map on the following page illustrate the location of these FDRAs:

FDRA Boundaries on the SHF

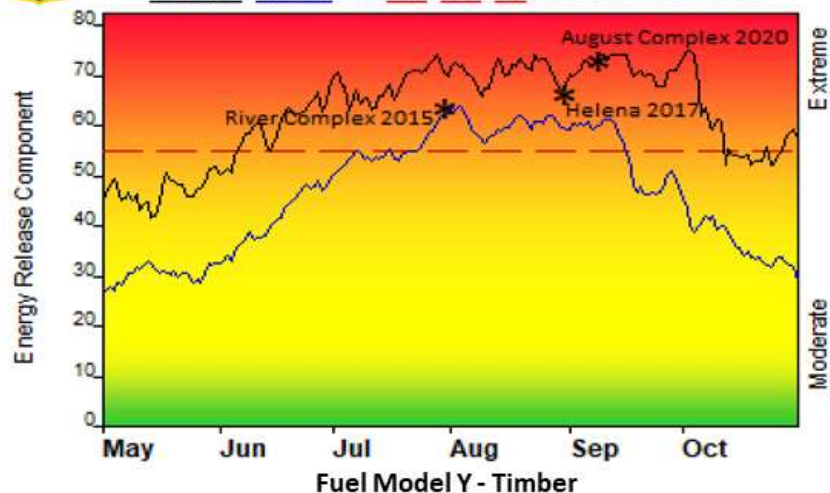


| Fire Danger Rating Area | District / Location | Acreage | % of Forest |
|-------------------------|---------------------------------|-----------|-------------|
| FDRA S-230 | Weaverville, Big Bar, & Hayfork | 1,379,686 | 45% |
| FDRA S-238 | Yolla Bolla / Platina | 242,414 | 8% |
| FDRA S-241 | Shasta Lake | 382,570 | 13% |
| FDRA S-240 | Mt. Shasta / Weed / Dunsmuir | 493,560 | 16% |
| FDRA S-243 | McCloud | 548,212 | 18% |

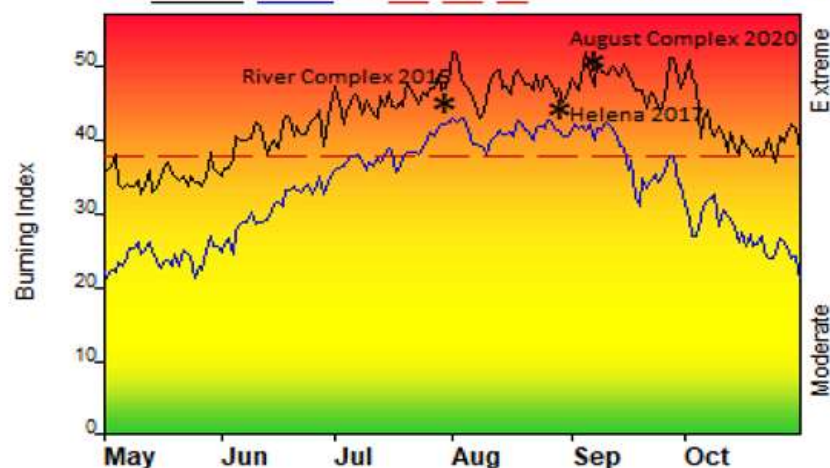


FIRE DANGER -- SHF West Side

Maximum, Average, and Critical Value, based on 15 years data



Maximum, Average, and Critical Value, based on 15 years of data



Fire Danger Rating Areas: S-230 & S-238 Fire Weather Zone: SHF portions of 283 and 263



- All analyses use NFDRS 16 Fuel Model Y (timber litter) and data from May 1st-October 31st.
- Threshold values determined using 2006-2020 data, cross walked to percentiles from 2010-2019 gap filled data.
- NFDRS Compliant RAWS: Big Bar, Backbone, Scorpion, Trinity Camp, Hayfork, Friend Mountain, Yolla Bolla and Pattymocus

Fire Danger Interpretation

- Extreme** – Use extreme caution
- High** – Watch for Change
- Moderate** – Low Potential, maintain awareness



- Maximum – Highest Daily Value 2006-2020
- Average – Shows daily average index values over 15 years, peaks in this line indicate the peak of fire season – running from mid-July through mid-September in an average year.
- 68th Percentile ERC (dashed line upper left) – 32% of days from 2010-2019 had ERC above 55
- 65th Percentile BI (dashed line lower left) – 35% of days from 2010-2019 had BI above 38

Remember What Fire Danger Tells You:

- ✓ Energy Release Component (ERC) - Wind is **NOT** part of ERC calculation (Upper Left)
 - Represents overall seasonal trend – driven by heavy dead & live fuel moisture:
- ✓ Burning Index (BI) - Wind **IS** part of BI calculation (Lower Left)
 - Represents day-to-day fluctuations – driven by fine dead moisture and wind
- ✓ Fire danger is general - Look for local variations in fuels, topography & weather
- ✓ Listen to weather forecasts!



Past Experience:

- Large fire growth may occur without significant wind due to fuels and topography. The 2015 River complex grew steadily in this manner, driven by fuels and topography, with limited large growth driven by critical weather.
- Local winds often not captured by RAWS due to highly variable terrain and canyon influences. Diurnal canyon winds often dominate in main stem and South Fork of the Trinity River. Helena (2017) exemplifies this as a human caused start driven by canyon winds that were not well captured by the BI at RAWS across the 2 FDRA's.
- Dry lightning events are a frequent driver of multi-fire days and may not coincide with the thresholds below (River Complex 2015). Numerous fires overwhelm initial attack capacity, large growth may occur days to weeks after initial ignition. Nearly 60% of ignitions in period analyzed resulted from lightning.
- August Complex (2020) resulted from a major dry lightning event, similar to 2015. The complex burned onto SHF and experienced massive growth during multiple offshore wind events post-ignition. The date of largest growth on September 8th - 9th during one such offshore event is shown, not ignition date.
- Problem fires (>5 ac) become common at these thresholds, problem fire frequency increases beyond these values:

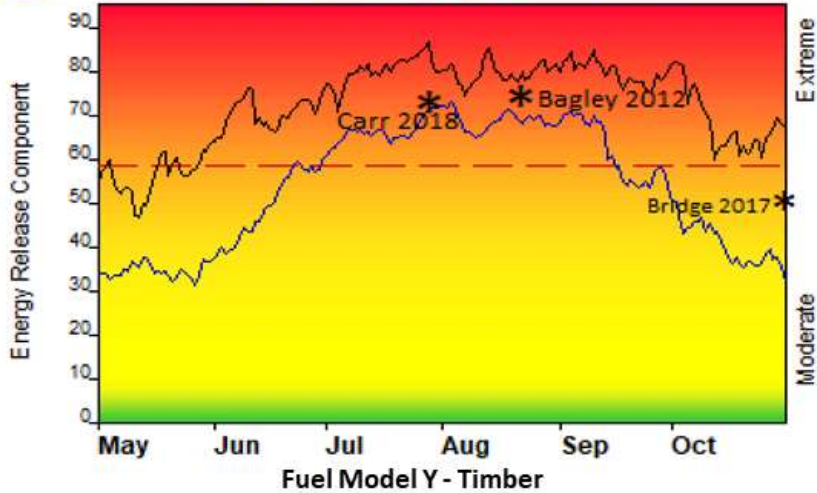
Responsible Agency: USFS Shasta-Trinity NF
Updated 6/2/2021

| | | | |
|---------|------------|--------------|-------------------|
| NFDRS | ERC > 55 | BI > 38 | |
| Weather | Temp > 89F | Min Rh < 21% | Rh Recovery < 70% |

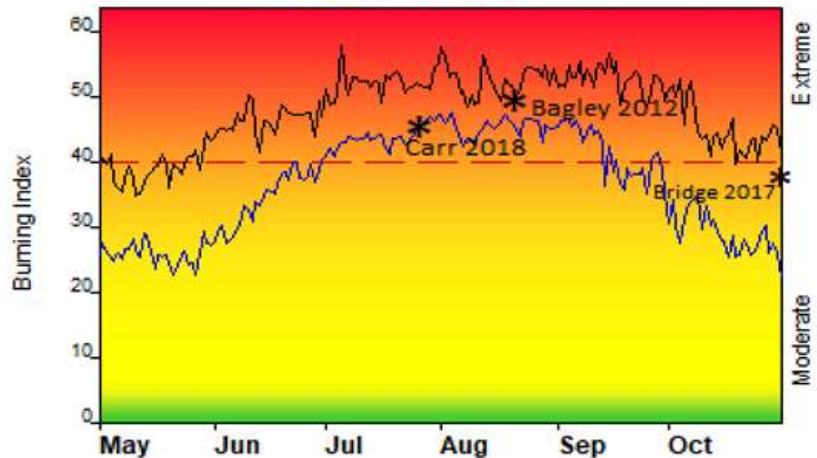


FIRE DANGER -- Shasta Lake

Maximum, Average, and Critical Value, based on 15 years of data



Maximum, Average, and Critical Value, based on 15 years of data



Fire Danger Rating Area: S-241 Fire Weather Zone: 213

- All analyses use NFDRS 16 Fuel Model Y (timber litter) and data from May 1st-October 31st.
- Threshold values determined using 2006-2020 data, cross walked to percentiles from 2010-2019 gap filled data.
- NFDRS Compliant RAWs: Sugarloaf (SHF) and Oak Mountain



Fire Danger Interpretation

- Extreme** – Use extreme caution
- High** – Watch for Change
- Moderate** – Low Potential, maintain awareness



- Maximum – Highest Daily Value 2006-2020
- Average – Shows daily average index values over 15 years, peaks in this line indicate the peak of fire season – running from mid-June through late September in an average year.
- 54th Percentile ERC (dashed line upper left) – 46% of days from 2010-2019 had ERC above 58
- 53rd Percentile BI (dashed line lower left) – 47% of days from 2010-2019 had BI above 40

Remember What Fire Danger Tells You:

- ✓ Energy Release Component (ERC) - Wind is NOT part of ERC calculation (Upper Left)
 - Represents overall seasonal trend – driven by heavy dead & live fuel moistures
- ✓ Burning Index (BI) - Wind IS part of BI calculation (Lower Left)
 - Represents day-to-day fluctuations – driven by fine dead moisture and wind
- ✓ Fire danger is general - Look for local variations in fuels, topography & weather
- ✓ Listen to weather forecasts – especially wind!



Past Experience:

- Human starts along the Interstate 5 corridor, near communities, and from recreation (Shasta Lake) comprise majority of starts in this area - nearly 70% of starts over period analyzed were human caused.
- Alignment of wind & slope contributes to large fire growth, particularly where canyons enhance wind flow, such as along I-5 / Sacramento River Canyon. North to northeast winds in late summer and fall can be very strong and result in large fire growth. Local RAWs do not always capture these offshore winds.
- Bagley fire (2012) resulted from lightning in very rugged, inaccessible north central portion of this area, grew into long campaign fire, started at elevated ERC and BI levels. Carr Fire (2018), human start along Hwy 299 in Whiskeytown during period of elevated ERC, significant loss of life and property. Bridge fire (2017), human start along I-5 demonstrates late season potential in this area and fire potential at lower end of thresholds.
- Problem fires (>5 ac) become common at these thresholds, problem fire frequency increases beyond these values:

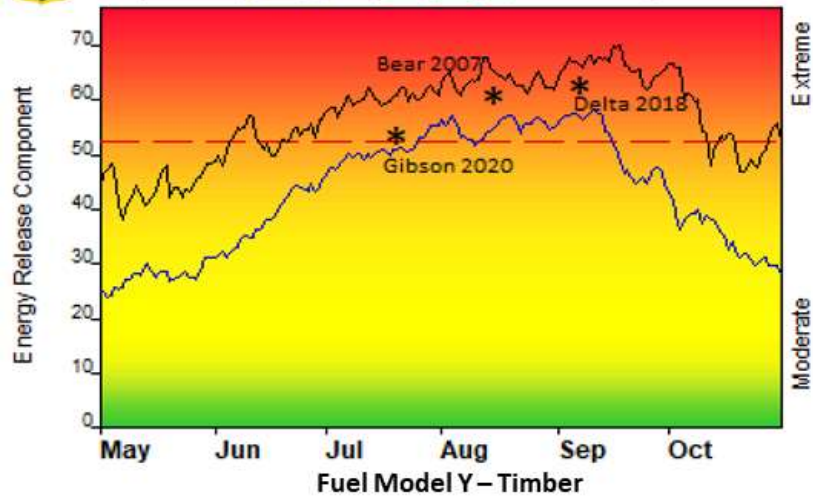
Responsible Agency: USFS Shasta-Trinity NF
Updated 6/2/2021

| NFDRS | ERC > 58 | BI > 40 | |
|---------|------------|--------------|-------------------|
| Weather | Temp > 90F | Min Rh < 23% | Rh Recovery < 61% |

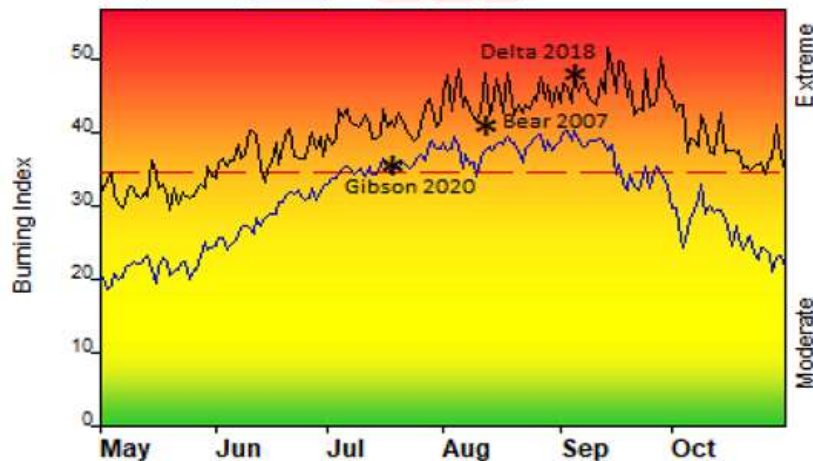


FIRE DANGER -- SHF Northeast

Maximum, Average, and Critical Value based on 15 years data



Maximum, Average, and Critical Value based on 15 years data



Fire Danger Rating Area: S-240 & S-243 **Fire Weather Zone:** 282, 284 and 213 in Sac. Canyon

- All analyses use NFDRS 16 Fuel Model Y (timber litter) and data from May 1st-October 31st.
- Threshold values determined using 2006-2020 data, cross walked to percentiles from 2010-2019 gap filled data.
- NFDRS Compliant RAWs: Sims, Mt Shasta, Bolam, Ash Creek and Round Mountain



Fire Danger Interpretation

- **Extreme – Use extreme caution**
- **High – Watch for Change**
- **Moderate – Low Potential, maintain awareness**



- Maximum – Highest Daily Value 2006-2020
- Average – Shows daily average index values over 15 years, peaks in this line indicate the peak of fire season – running from late July through mid-September in an average year.
- 71st Percentile ERC (dashed line upper left) – 29% of days from 2010-2019 had ERC above 52
- 75th Percentile BI (dashed line lower left) – 25% of days from 2010-2019 had BI above 34

Remember What Fire Danger Tells You:

- ✓ Energy Release Component (ERC) - Wind is NOT part of ERC calculation (Upper Left)
 - Represents overall seasonal trend – driven by heavy dead & live fuel moistures.
- ✓ Burning Index (BI) - Wind IS part of BI calculation (Lower Left)
 - Represents day-to-day fluctuations – driven by fine dead moisture and wind
- ✓ Fire danger is general - Look for local variations in fuels, topography & weather
- ✓ Listen to weather forecasts – especially wind!



Past Experience:

- Fire season often begins later than the rest of SHF due to higher elevation and heavier winter snow.
- **Winds are a significant driver of growth in this area!** Critical Winds include: 1) Strong diurnal winds in the Sacramento River Canyon 2) Downslope winds from Mt Shasta to the N/NW are common and often dry (Weed Winds). 3) McCloud Flats lack topography – winds can fuel large fire growth in any direction. T-storm outflows in NE California have resulted in large fire growth & entrapments on similar terrain (Crank 1987, Frog 2015)
- 66% of ignitions in this area human caused, ignition density is highest along I-5 corridor and near communities. Industrial timber operations are considered values at risk and contribute to ignitions.
- Bear (2007) was a human caused fire driven by SSW winds on the McCloud Flats (FDRA S-243). Gibson (2020) and Delta (2018) were both human starts along I-5 with different outcomes. Gibson provided control difficulties, but spread was stopped during first shift. Delta occurred at extremes of BI and ERC; driven by strong up canyon winds, Delta grew over 20,000 acres during the first shift and became a major fire, closing I-5 and rail traffic for days.
- Problem fires (>5 ac) become common at these thresholds, problem fire frequency increases beyond these values:

Responsible Agency: USFS Shasta-Trinity NF
Updated 6/2/2021

| | | | |
|---------|------------|--------------|-------------------|
| NFDRS | ERC > 52 | BI > 34 | |
| Weather | Temp > 81F | Min Rh < 28% | Rh Recovery < 75% |

Section 5 – Fire Suppression

Redding Dispatch (called “Redding” on the radio) will coordinate all fire resources during an initial attack. The exception to this is when a District is in its “Lightning Plan.” The Lightning plan is activated when there are too many local fires, and the radio traffic overwhelms the main Forest Repeat channel. During a Lightning Plan, coordinating resources falls back to the District Duty Officer over the District Net channel.

It's important to remember that even if you are not an Incident Commander, your role is crucial. Contract or non-IC qualified resources can provide an "Initial Assessment" upon arriving at the scene or a good vantage point. When relaying information to Dispatch, call it an "Initial Assessment" and not a "Size-Up"; the Incident Commander will provide the "Size-Up."

The Initial Assessment should include:

- Confirmation or clarification of the fire's location
- Best ingress and parking/staging
- Description of the fire's size, smoke characteristics, and behavior
- Details about fuels, terrain, and weather
- Any special considerations, such as values at risk or powerlines in the area.

Please remember the following information:

If you are not the Incident Commander, do not cancel or augment the resources being sent to the fire. The Duty Officer will adjust the resources based on the Initial Assessment until the Incident Commander arrives on the scene.

If you are a contract resource or not qualified as an Incident Commander, do not accept the IC role if Dispatch assigns it to you. Instead, inform Dispatch that you are not an Incident Commander but can continue to be a point of contact for incoming Agency resources.

If you are qualified as an Incident Commander, utilize the first page of the "SHF Incident Organizer" to relay a "Size-Up" to Dispatch. If you do not have the SHF Incident Organizer, you may use the Size-Up Report on the inside cover of your IRPG, but remember to include the best ingress, parking, staging area, and updated latitude/longitude for incoming resources. Effective communication with Dispatch is essential for managing the incident. No matter which checklist you choose, relay the Size-Up to Dispatch as soon as you assess the fire scene. Longer times are usually associated with larger fire sizes or greater complexity.

Think ahead! Develop tactics/plans based on fuel conditions, weather forecasts, and expected fire behavior. Use air resources early on when they are most effective. Use them to get into or locate the fire. Request an air attack to manage multiple air resources. Request supervisory resources that match the production resources. Remember, it's easier to turn back resources you don't need than not to have them when you do, especially under high-end conditions.

It's crucial to underline the need for early development of the ICS organization. Many resources from outside the area have expressed surprise at the fast pace at which some initial attack fires on the SHF can occur. By building your ICS organization early on, you can effectively manage fast-moving fires and prevent being quickly overwhelmed.

Section 6 – Hazards and Potential

Environmental Factors

We would like you to conduct tailgate safety briefings before engaging in suppression or project work. Please ensure your module members are aware of the following common hazards on the Shasta-Trinity NF, as well as any hazards specific to the local area you are working in:

- **Heat Exhaustion/Stress/Stroke**

Dehydration accompanied by continuous exercise will cause heat exhaustion. Please monitor personnel, especially those working at lower elevations and grasslands with high temperatures. 6 Minutes for Safety – “Heat Disorders”:

<https://www-nwccg.fs2c.usda.gov/6mfs/firefighter-health-and-first-aid/heat-disorders>

6 Minutes for Safety – “Heat Stress”:

<https://www-nwccg.fs2c.usda.gov/6mfs/firefighter-health-and-first-aid/heat-stress>

- **Dehydration**

Lack of humidity and high elevations cause dehydration, even at lower temperatures; please drink lots and lots of water. If you are thirsty, it’s too late!!

- **Insects**

Gnats, mosquitoes, yellowjackets, and ticks are common in this area. Take precautions by using repellents. Check for ticks regularly, especially if working in oak brush, sagebrush, or lower elevations. Lyme disease, though not common, has been reported here.

6 Minutes for Safety– “Bees and Wasps”: <https://bit.ly/3JNOu7F>

The Center for Disease Control (CDC) is a great source of information about tick identification, bite prevention, removal, and tick-borne diseases. In our work areas, the most common tick is the Western black-legged tick, which can carry Lyme Disease. The Brown dog, American dog, and Rocky Mountain wood ticks, all carriers of Rocky Mountain Spotted Fever, have also been found here, but they are not as common as the Western black-legged tick.

CDC – “Ticks”: <https://bit.ly/3JNcNCx>

- **Snags**

Snags are common in many locations, from insect/disease outbreaks to drought and large fires. Adjust tactics and line locations as appropriate. Ask local units about areas with known concentrations of snags.

- **Snakes**

Common snakes, although relatively rare, can be found at most elevations. Rattlesnakes are typically found at around 7000 feet and below. Most rattlesnakes on the Forest are of the Northern Pacific Rattlesnake species; the Great Basin rattlesnake may occasionally be found in the far eastern part of the McCloud District. Both are venomous pit vipers but are not known for being aggressive unless threatened. It's essential to remember that these types of rattlesnakes prefer to be left alone, so the easiest way to avoid being bitten is to leave them alone and not provoke them.

- **Poison Oak**

Poison Oak is the primary cause of personnel seeking medical attention on the Shasta-Trinity. It can grow as both a shrub and a vine and is widespread throughout the mountains and valleys of California but generally does not grow at elevations above 5,000 feet. If you are not completely confident that you and your crew know what poison oak looks like in all stages of the year,

please ask local personnel to point out the plant to you. Below are some informative web pages regarding poison oak:



“Pacific Poison Oak” by National Park Service
<https://bit.ly/3O2n3bj>

▪ **Marijuana Grows**

If you come across a cannabis grow site, do not enter the area. Quietly leave the same way you came in. You are being watched!

Don't:

- Look around or explore.
- Take a sample.
- Take a GPS location while you are in the grow site.
- Use your camera, radio, or cell phone while you are in the grow site.

Do:

- Return to your vehicle and leave as soon as possible.
- Call Dispatch via phone (530) 226-2400 and report your location when you are a safe distance away and sure you are not being watched.

Section 7 – Directions to Stations

Below are locations of the common stations on the SHF. If you have the Google Maps app loaded, these QR Codes will give you driving directions from your location.

Use your camera to scan these QR Codes- don't use a dedicated QR reader app.

Redding

SHF Headquarters



North Ops (NCSC)



Air Tanker Base



South Fork Management Unit (SFMU)

Harrison Gulch
(E-311, E-312, E-313, WT-16,
Trinity IHC)



Forest Glen



Hayfork
(E-321, E-322)



Trinity River Management Unit (TRMU)

Weaverville District Office
(E-343, WT-246)



Mule Creek
(E-341)



Coffee Creek



Junction City
(E-332)



Big Bar
(E-331)



Burnt Ranch
(E-334)



Shasta Lake National Recreation Area (NRA)

Shasta Lake District Office
(E-352, E-353)



Big Bend
(Cover Station with CALFIRE)



Lakeshore
(E-351, Shasta Lake Crew-5)



Shasta-McCloud Management Unit (SMMU)

Sims
(E-363)



Mount Shasta District Office
(E-361, E-362, WT-66)



McCloud District Office
(E-371)



Ash Creek
(E-372, E-373)



There is also an online Google map of all SHF CAD points, Station locations, Repeater locations, etc. at:



Section 8 – Maps

Use the QR Code reader function in Avenza. The QR icon is in the upper-right corner of the Import Map section. We recommend putting each category of map into collections, so Avenza smoothly transitions from one map to the other.

If you are having problems downloading the maps, ask the Mobilization Center Manager if they can AirDrop them to you.

Hard copy SHF Forest Visitor maps are available at the Mobilization Center. We ask that non-local Federal resources return the hardcopy maps to the Mobilization Center during demobilization.

Map Descriptions:

- Visitor Maps are the same as the hardcopy Forest maps available to the public. They are good for large-scale orientation. Minor spur roads are often not labeled on Visitor maps.
- Transportation Maps are similar to the Visitor Maps but are in a smaller scale and contain much more detail than the Visitor Maps. Most spur roads are labeled on the transportation maps, but in small print.
- Motor Vehicle Use Maps (MVUM) are simple greyscale maps that are excellent for finding spur road names. They also differentiate between Forest Service and Non-FS property. Because of the lack of detail, they should not be used for strategic planning but are excellent for orientation.

SHF Visitor Maps & I-5 Exits

SHF Visitor Map - East



[SHF East Link](#)

SHF Visitor Map - West



[SHF West Link](#)

SHF MVUM, Transportation Maps, & Neighboring Forest Maps

MVUMs



[MVUM Link](#)

Transportation Maps



[Transportation Link](#)

Neighboring Forests



[Neighboring Forests Link](#)