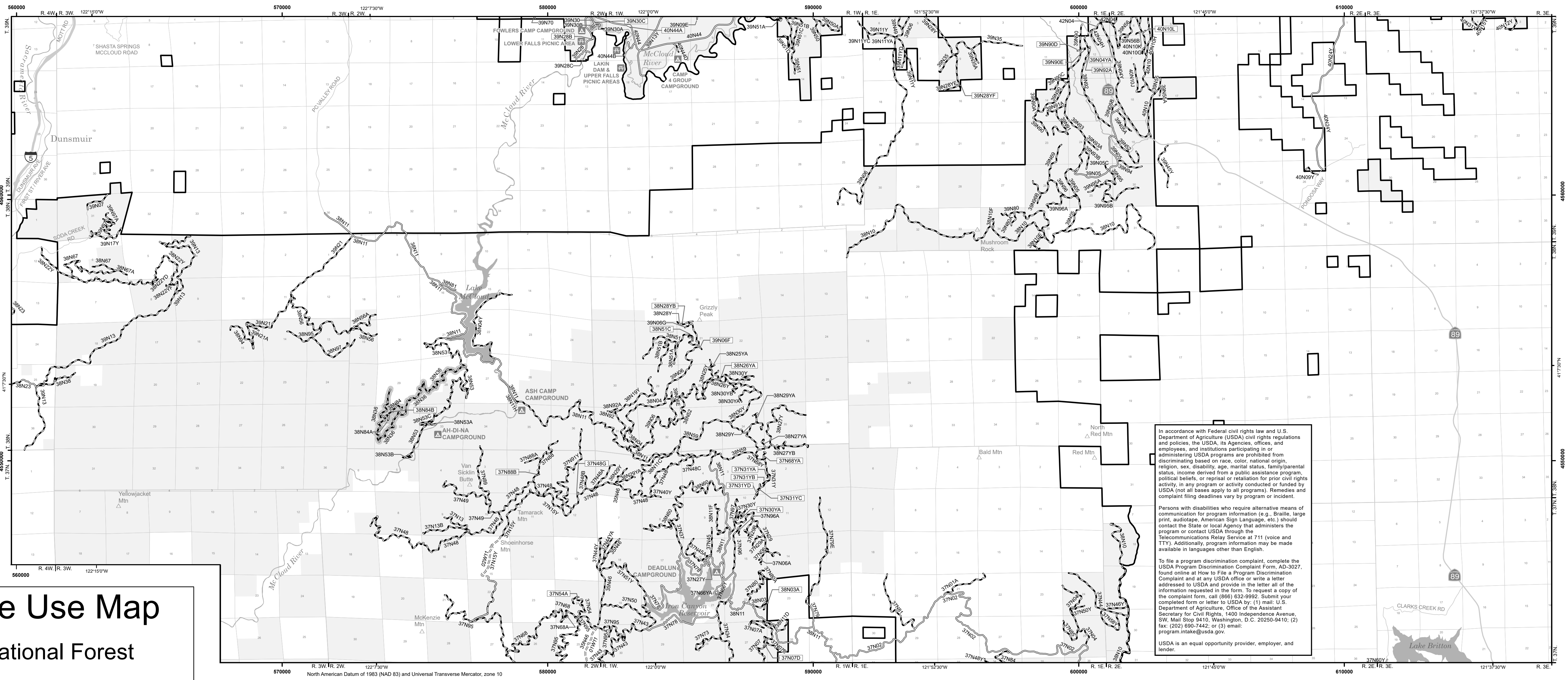


Legend

- Roads Open to Highway Legal Vehicles
- Roads Open to All Vehicles
- Trails Open to All Vehicles
- Seasonal Designation (See Table)
- Interstate
- Highways, US, State
- Other Public Roads
- 70333 Short Route Identifier
- FS Campground
- Picnic Area
- Peaks
- Forest Boundary
- National Forest System Lands
- Non-National Forest System Lands within the National Forest
- Township and Range Lines
- Section Lines
- Large Lakes and Rivers



In accordance with Federal civil rights law and U.S. Department of Agriculture (USDA) civil rights regulations and policies, the USDA, its Agencies, offices, and employees, and institutions participating in or administering USDA programs are prohibited from discriminating based on race, color, national origin, religion, sex, disability, age, marital status, family/parental status, income derived from a public assistance program, political beliefs, or reprisal or retaliation for prior civil rights activity, in any program or activity conducted or funded by USDA (not all bases apply to all programs). Remedies and complaint filing deadlines vary by program or incident.

Persons with disabilities who require alternative means of communication for program information (e.g., Braille, large print, audiotape, American Sign Language, etc.) should contact the State or local Agency that administers the program or contact USDA through the Telecommunications Relay Service at 711 (voice and TTY). Additionally, program information may be made available in languages other than English.

To file a program discrimination complaint, complete the USDA Program Discrimination Complaint Form, AD-3027, found online at [How to File a Program Discrimination Complaint](http://www.fds.usda.gov) and at any USDA office or write a letter addressed to USDA and provide in the letter all of the information requested in the form. To request a copy of the complaint form, call (866) 632-6992. Submit your completed form or letter to USDA by: (1) mail: U.S. Department of Agriculture, Office of the Assistant Secretary for Civil Rights, 1400 Independence Avenue, SW, Mail Stop 9410, Washington, D.C. 20250-9410; (2) fax: (202) 693-7442; or (3) email: program.intake@usda.gov.

USDA is an equal opportunity provider, employer, and lender.

Motor Vehicle Use Map

Shasta-Trinity National Forest

McCloud Ranger District



Other options for viewing or using this map include:

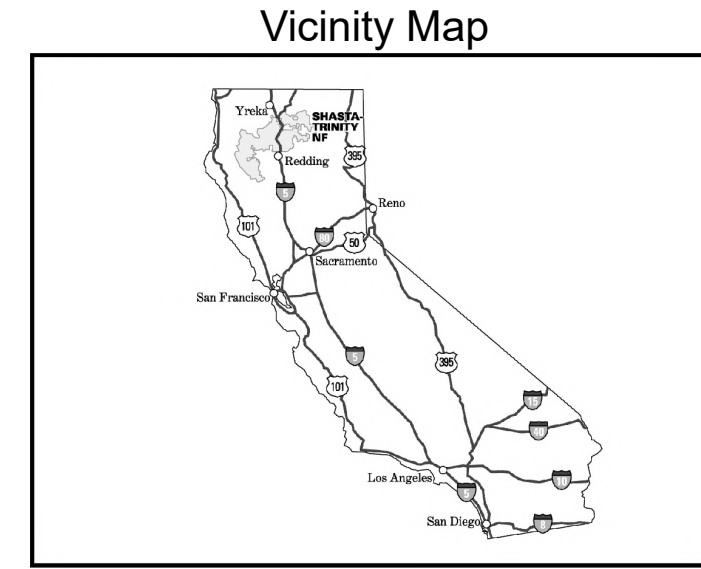
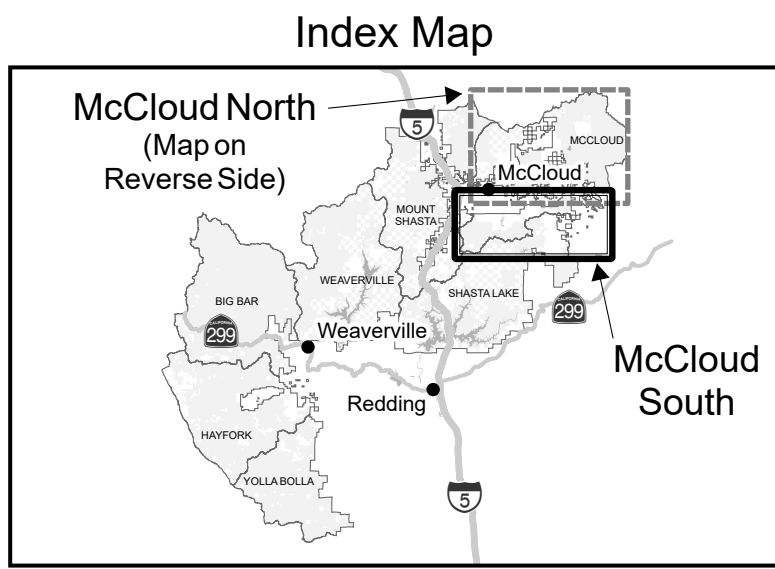
- View or download a copy of this map using your computer.
- Use the Avenza PDF Maps app (free) on iOS (Apple) and Android devices.

For more details go to: <http://www.fs.usda.gov/stnr>

or scan this code with your smartphone or tablet.



California America's Great Outdoors 2014



PURPOSE AND CONTENTS OF THIS MAP

The designations shown on this motor vehicle use map (MVUM) were made by the responsible official pursuant to 36 CFR 212.51; are effective as of the date on the front cover of this MVUM; and will remain in effect until superseded by next year's MVUM.

David R. Myers
Forest Supervisor, Shasta-Trinity National Forest

It is the responsibility of the user to acquire the current MVUM. This map shows the National Forest System roads, National Forest System trails, and the areas on National Forest System lands in the McCloud Ranger District that are designated for motor vehicle use pursuant to 36 Code of Federal Regulations (CFR) 212.51. This MVUM also identifies the vehicle classes allowed on each route and in each area; and any seasonal restrictions that apply on those routes and in those areas.

Designation of a road, trail, or area for motor vehicle use by a particular class of vehicle under 36 CFR 212.51 should not be interpreted as encouraging or inviting use or implying that the road, trail, or area is passable, actively maintained, or safe for travel. Motor vehicle designations include parking along designated routes and at facilities associated with designated routes when it is safe to do so and when not causing damage to National Forest System resources. Seasonal weather conditions and natural events may render designated roads and trails impassable for extended periods. Designated areas may contain dangerous or impassable terrain. Many designated roads and trails may be passable only by high-clearance vehicles or four-wheel-drive vehicles. Maintenance of designated roads and trails will depend on available resources, and many may receive little maintenance.

This motor vehicle use map identifies those roads, trails, and areas designated for the motor vehicle use under 36 CFR 212.51 for the purpose of enforcing the prohibition at 36 CFR 261.13. This is a limited purpose. The other public roads are shown for information and navigation purposes only and are not subject to designation under the Forest Service travel management regulation.

These designations apply only to National Forest System roads, National Forest System trails, and areas on National Forest System lands.

EXPLANATION OF LEGEND ITEMS

Roads Open to Highway Legal Vehicles Only:
 These roads are open only to motor vehicles licensed under State law for general operation on all public roads within the State.

Roads Open to All Vehicles:
 These roads are open to all motor vehicles, including smaller off-highway vehicles that may not be licensed for highway use (but not to oversize or overweight vehicles under State traffic law).

Trails Open to All Vehicles:
 These trails are open to all motor vehicles, including both highway legal and nonhighway legal vehicles.

Seasonal Designation:
 This symbol, used in conjunction with one of the other road or trail symbols, indicates that the road or trail is open only during certain portions of the year. Refer to the Seasonal Designation Table for further instructions.

Special Vehicle Designation:
 This symbol indicates the road or trail is open to classes of vehicles other than those listed above.

Other Public Roads and Trails:
 Interstate
 Highways, U.S., State
 Other Public Roads

These symbols are used to show routes the Forest Service does not have jurisdiction over and has not designated for motorized use. These symbols are part of the reference layers showing connections to towns and cities outside the forest boundary.

Short Route Identifier:
 70333

This symbol is used for routes that are too short to show an actual symbol type on the map. The symbol contains the number of the road or trail. Users should refer to the corresponding number in the Short Route Table for designation information.

PROHIBITIONS

It is prohibited to possess or operate a motor vehicle on National Forest System lands on the Shasta-Trinity National Forest other than in accordance with these designations (36 CFR 261.13).

Violators of 36 CFR 261.13 are subject to a fine of up to \$5,000, imprisonment for up to 6 months, or both (18 U.S.C. 3571(e)). This prohibition applies regardless of the presence or absence of signs.

This map does not display nonmotorized uses, over-snow uses, or other facilities and attractions on the Shasta-Trinity National Forest. Obtain forest visitor information from the local national forest office.

Designated roads, trails, and areas may also be subject to temporary, emergency closures. As a visitor, you must comply with signs notifying you of such restrictions. A national forest may issue an order to close a road, trail, or area on a temporary basis to protect the life, health or safety of forest visitors or the natural or cultural resources in these areas. Such a temporary and/or emergency closures are consistent with the Travel Management Rule (36 CFR 212.52 (b), 36 CFR 261 subpart B).

The designation "road or trail open to all motor vehicles" does not supersede State traffic law.

OPERATOR RESPONSIBILITIES

Operating a motor vehicle on National Forest System roads, National Forest System trails, and in areas on National Forest System lands carries a greater responsibility than operating that vehicle in a city or other developed setting. Not only must you know and follow all applicable traffic laws, you need to show concern for the environment as well as other forest users. The misuse of motor vehicles can lead to the temporary or permanent closure of any designated road, trail, or area. As a motor vehicle operator, you are also subject to State traffic law, including State requirements for licensing, registration, and operation of the vehicle in question.

Motor vehicle use, especially off-highway vehicle use, involves inherent risks that may cause property damage, serious injury, and possibly death to participants. Drive cautiously and anticipate rough surfaces and features, such as snow, mud, vegetation, and water crossings common to remote driving conditions. By your participation, you voluntarily assume full responsibility for these damages, risks, and dangers. Take care at all times to protect yourself and those under your responsibility.

Much of the Shasta-Trinity National Forest is remote. Medical assistance may not be readily available. Cellular telephones do not work in many areas of the Shasta-Trinity National Forest. Take adequate food, water, first-aid supplies, and other equipment appropriate for the conditions and expected weather.

ALWAYS REMEMBER TO RESPECT PRIVATE LAND! PROTECT YOUR PRIVILEGE. STAY ON DESIGNATED ROADS AND TRAILS AND IN DESIGNATED AREAS.

Read and understand this map in its entirety. If you have questions please contact the Shasta-Trinity National Forest for clarification.

As a motor vehicle operator on a National Forest System road, trail, or area, you must comply with this map, as well as all Federal, State, and local laws and regulations. Compliance with these rules is your responsibility.

Parking along Designated Routes
 Motor vehicles may be parked within one vehicle length from the edge of the road surface when it is safe to do so without causing damage to NFS resources or facilities, unless prohibited by state law, a traffic sign, or an order (36 CFR 261.54).

INFORMATION SOURCES

Shasta-Trinity National Forest Headquarters
 3644 Avtech Parkway, Redding, CA 96002
 (530) 226-2500 TTY-TDD: (530) 226-2490
www.fs.fed.us/5/shastatrinity

Big Bar Ranger Station
 Highway 299 West, Star Route 1, Box 10
 Big Bar, CA 96010
 (530) 623-6106

Harrison Gulch Ranger Station
 HC01 Box 400
 2555 State Highway 36, Platina, CA 96076
 (530) 352-4211

Hayfork Ranger Station
 P.O. Box 159
 Hayfork, CA 96041
 (530) 628-5227

McCloud Ranger Station
 P.O. Box 1620
 2019 Forest Road, McCloud, CA 96057
 (530) 964-2184

Mt. Shasta Ranger Station
 204 West Alma Street, Mt. Shasta, CA 96067
 (530) 926-4511

Shasta Lake Ranger Station
 14225 Holiday Road, Redding, CA 96003
 (530) 275-1587
 Visitor Information Center: (530) 275-1589

Weaverville Ranger Station
 P.O. Box 1190
 360 Main Street, Weaverville, CA 96093
 (530) 623-2121

In Case of Emergency
 In case of medical or law enforcement emergencies, dial 911. Please be advised that many areas of the forest are not covered by regular cell phone service.



Special Vehicle Designation
 Special vehicle designation roads are open to high clearance vehicles only.

Seasonal Vehicle Designations		
Route Number	Legend	Dates Allowed
38N30, 38N30A, 38N30B, 38N30C	Roads Open to Highway Legal Vehicles Only, Seasonal	04/20-11/16
38N36, 38N84, 38N84A, 38N84B	Roads Open to All Vehicles, Seasonal	03/31-08/31

Short Route Identifier		
Routes Too Short to be Seen Clearly on the Map		
Route Number	Route Designation	Length in Feet
37N07D	Roads Open to All Vehicles, Yearlong	363
37N30YA	Roads Open to All Vehicles, Yearlong	277
37N31YA	Roads Open to All Vehicles, Yearlong	876
37N31YB	Roads Open to All Vehicles, Yearlong	780
37N31YC	Roads Open to All Vehicles, Yearlong	419
37N31YD	Roads Open to All Vehicles, Yearlong	406
37N48G	Roads Open to All Vehicles, Yearlong	384
37N54A	Roads Open to All Vehicles, Yearlong	307
37N68YA	Roads Open to All Vehicles, Yearlong	630
37N88B	Roads Open to All Vehicles, Yearlong	274
38N03A	Roads Open to All Vehicles, Yearlong	636
38N26YA	Roads Open to All Vehicles, Yearlong	662
38N28YB	Roads Open to All Vehicles, Yearlong	265
38N51C	Roads Open to All Vehicles, Yearlong	770
38N84B	Roads Open to All Vehicles, Yearlong	324
38N04YA	Roads Open to All Vehicles, Yearlong	528
38N06F	Roads Open to All Vehicles, Yearlong	609
38N28B	Roads Open to Highway Legal Vehicles Only, Yearlong	457
38N28YF	Roads Open to All Vehicles, Yearlong	181
38N30C	Roads Open to Highway Legal Vehicles Only, Seasonal	232
38N90D	Roads Open to All Vehicles, Yearlong	391
38N90E	Roads Open to All Vehicles, Yearlong	765
38N92A	Roads Open to All Vehicles, Yearlong	536
40N10L	Roads Open to All Vehicles, Yearlong	407
40N44A	Roads Open to Highway Legal Vehicles Only, Yearlong	896