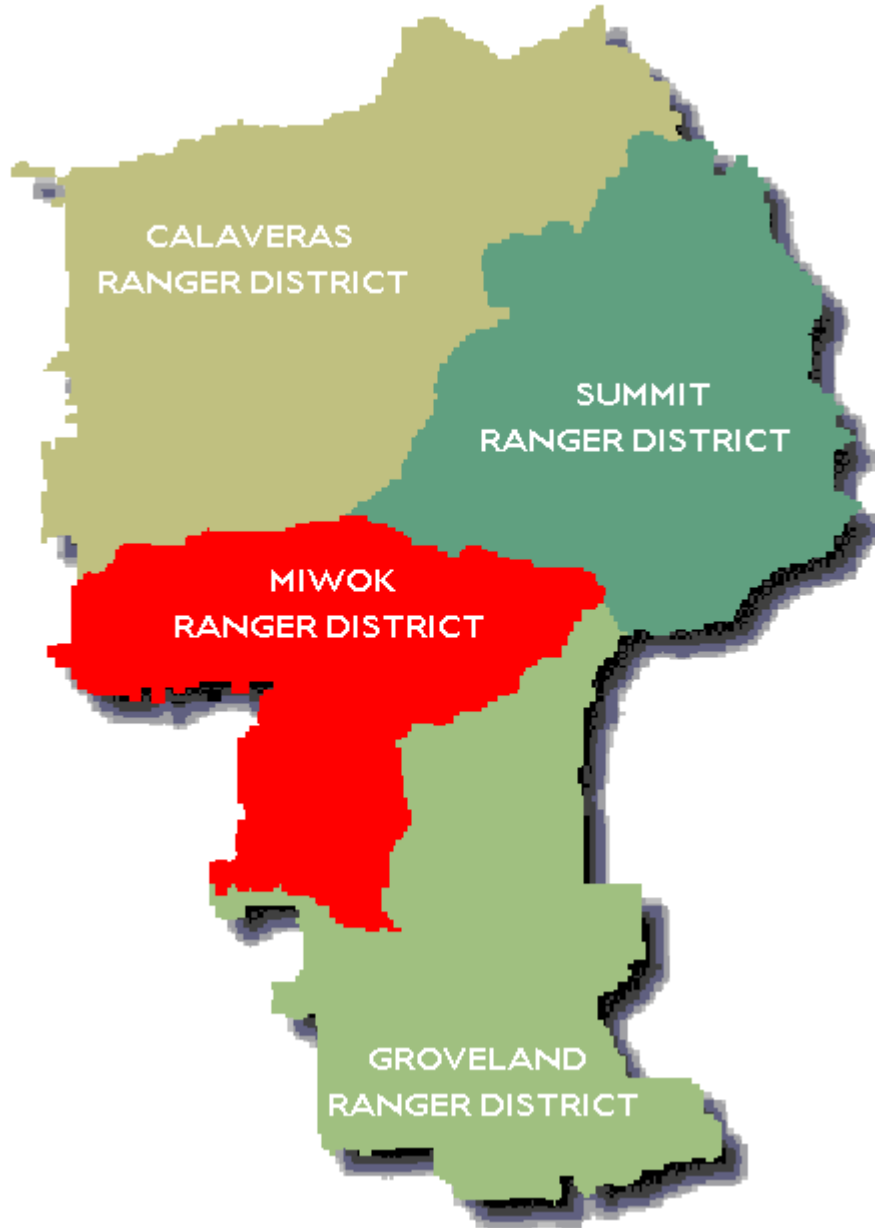


MIWOK DISTRICT

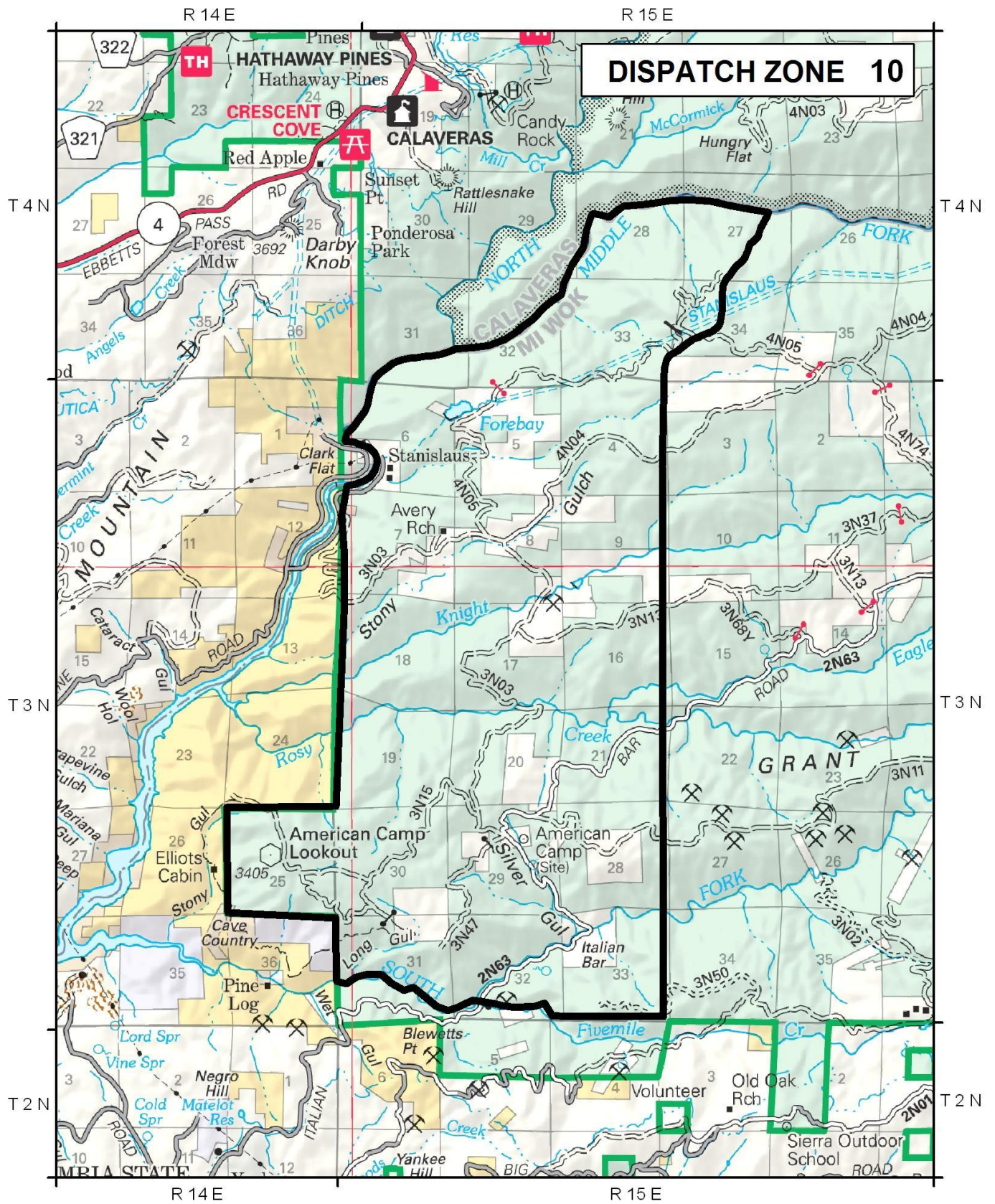


WILDCAD Run Card

Stanislaus National Forest – Fire Response

AREA - 10 (AMERICAN CAMP)

<u>Low Response</u> ENGINES (1): PREVENTION (1): OVERHEAD (1): LEO (1):	<u>Unit</u> E314 PAT14 BAT11 ED7
<u>Moderate Response</u> ENGINES (1): HELICOPTER (1): CREW (2): PREVENTION (1): OVERHEAD (1): WATERTENDER (1):	<u>Unit</u> E312 HEL517 CRW1, CRW20 PAT11 DIV1 WT212
<u>High Response</u> ENGINES (4): AIR ATTACK (1): AIR TANKER (2): LEAD PLANE (1): HELICOPTER (1): CREW (2): DOZER (1): WATERTENDER (1):	<u>Unit</u> E313, E332, E4460T, E4455T AA440 AT82, AT83 LEAD1 HEL404 VAL1, VAL2 DZ51 WT242
<u>Notes</u> <ul style="list-style-type: none">- NOTIFY SPI IF ON SPI LAND 532-7141- MOA STOCKTON ARMY NATIONAL GUARD 982-3881- ENGINES FOR STRUCTURE PROTECTION IF NEEDED	



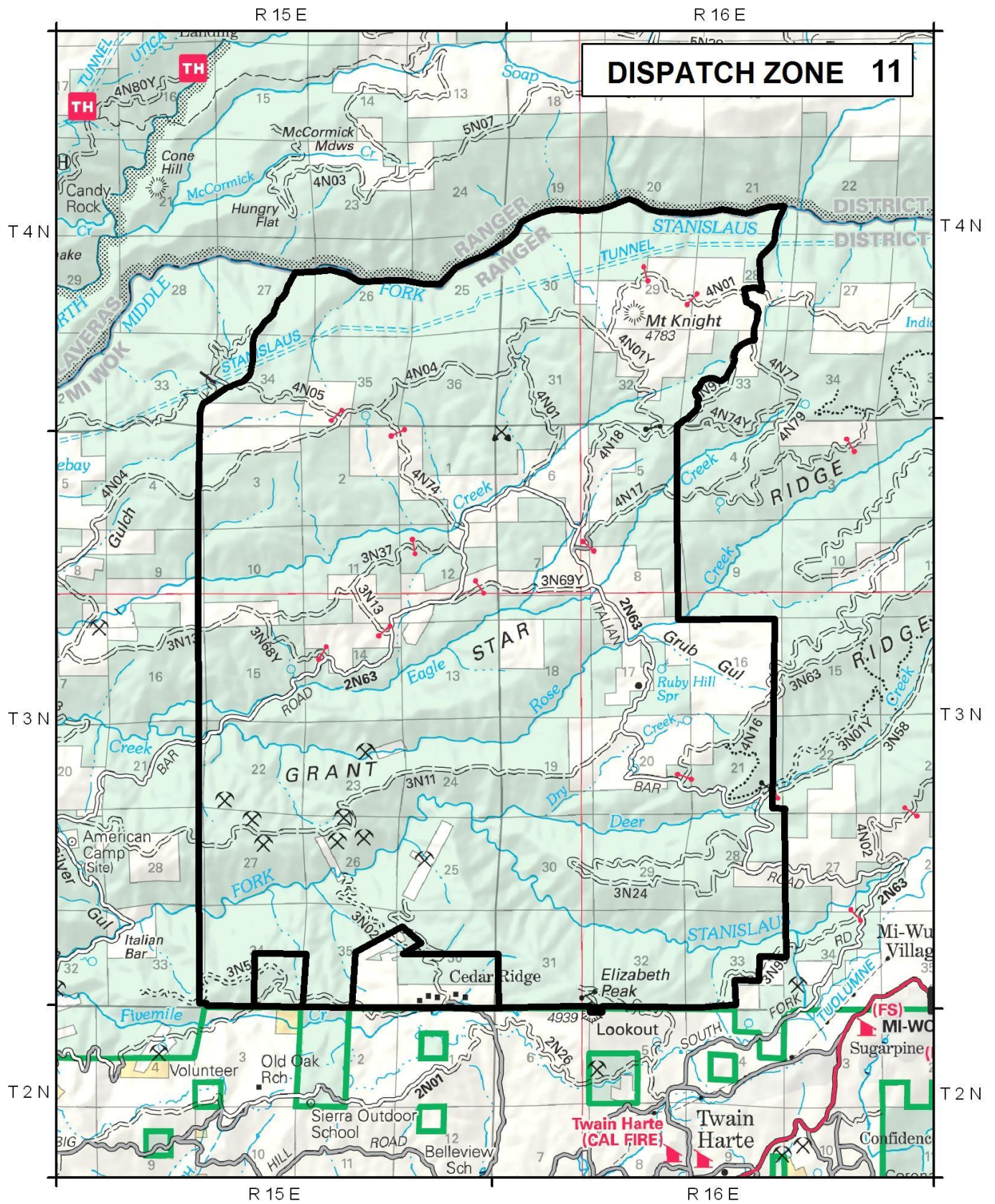
Updated 5/2023

WILDCAD Run Card

Stanislaus National Forest – Fire Response

AREA - 11 (JUPITER/RUBY HILL)

<u>Low Response</u> ENGINES (1): PREVENTION (1): OVERHEAD (1): LEO (1):	<u>Unit</u> E314 PAT14 BAT11 ED7
<u>Moderate Response</u> ENGINES (1): HELICOPTER (1): CREW (2): PREVENTION (1): OVERHEAD (1): WATERTENDER (1):	<u>Unit</u> E312 HEL517 CRW20, CRW1 PAT11 DIV1 WT212
<u>High Response</u> ENGINES (4): AIR ATTACK (1): AIR TANKER (2): LEAD PLANE (1): HELICOPTER (1): CREW (2): DOZER (1): WATERTENDER (1):	<u>Unit</u> E313, E4485T, E332, E334 AA440 AT82, AT83 LEAD1 HEL404 CRW3, BSL1 DZ51 WT242
<u>Notes</u> <ul style="list-style-type: none">- NOTIFY SPI IF ON SPI LAND 532-7141- MOA STOCKTON ARMY NATIONAL GUARD 982-3881- ENGINES FOR STRUCTURE PROTECTION IF NEEDED	



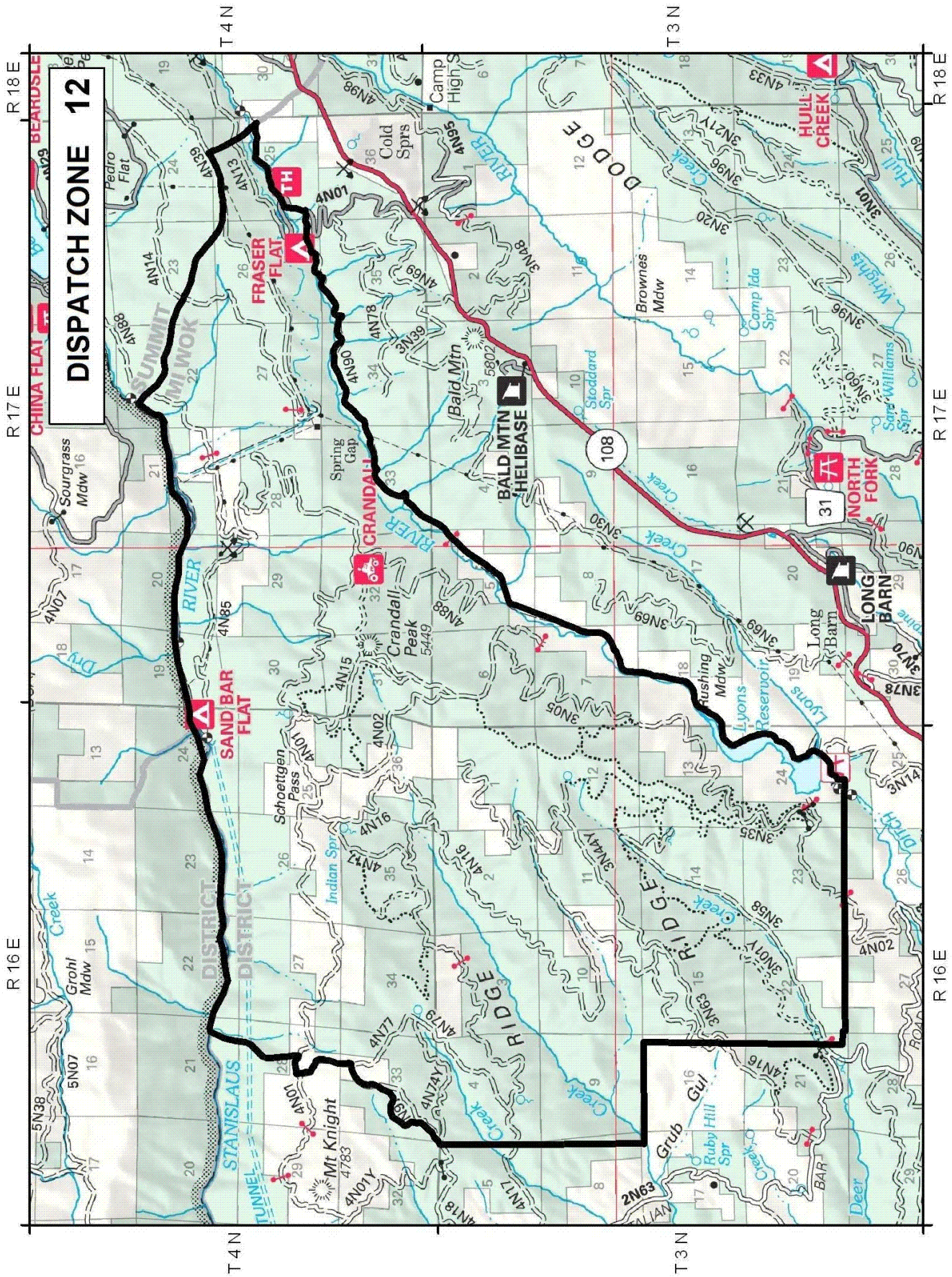
Updated 5/2023

WILDCAD Run Card

Stanislaus National Forest – Fire Response

AREA - 12 (SCHOTTEGEN PASS/LYONS)

<u>Low Response</u> ENGINES (1): PREVENTION (1): OVERHEAD (1): LEO (1):	<u>Unit</u> E12 PAT11 BAT11
<u>Moderate Response</u> ENGINES (1): HELICOPTER (1): CREW (2): PREVENTION (1): OVERHEAD (1): WATERTENDER (1):	<u>Unit</u> E314 HEL517 CRW1, CRW20 PAT14 DIV1 WT312
<u>High Response</u> ENGINES (4): AIR ATTACK (1): AIR TANKER (2): LEAD PLANE (1): HELICOPTER (1): CREW (3): DOZER (1): WATERTENDER (1):	<u>Unit</u> E313, E32, E34, E34485T AA440 AT82, AT83 LEAD1 HEL404 CRW3, BSL1, BSL2 DZ51 WT42
<u>Notes</u> <ul style="list-style-type: none">- NOTIFY SPI IF ON SPI LAND 532-7141- MOA STOCKTON ARMY NATIONAL GUARD 982-3881- ENGINES FOR STRUCTURE PROTECTION IF NEEDED	

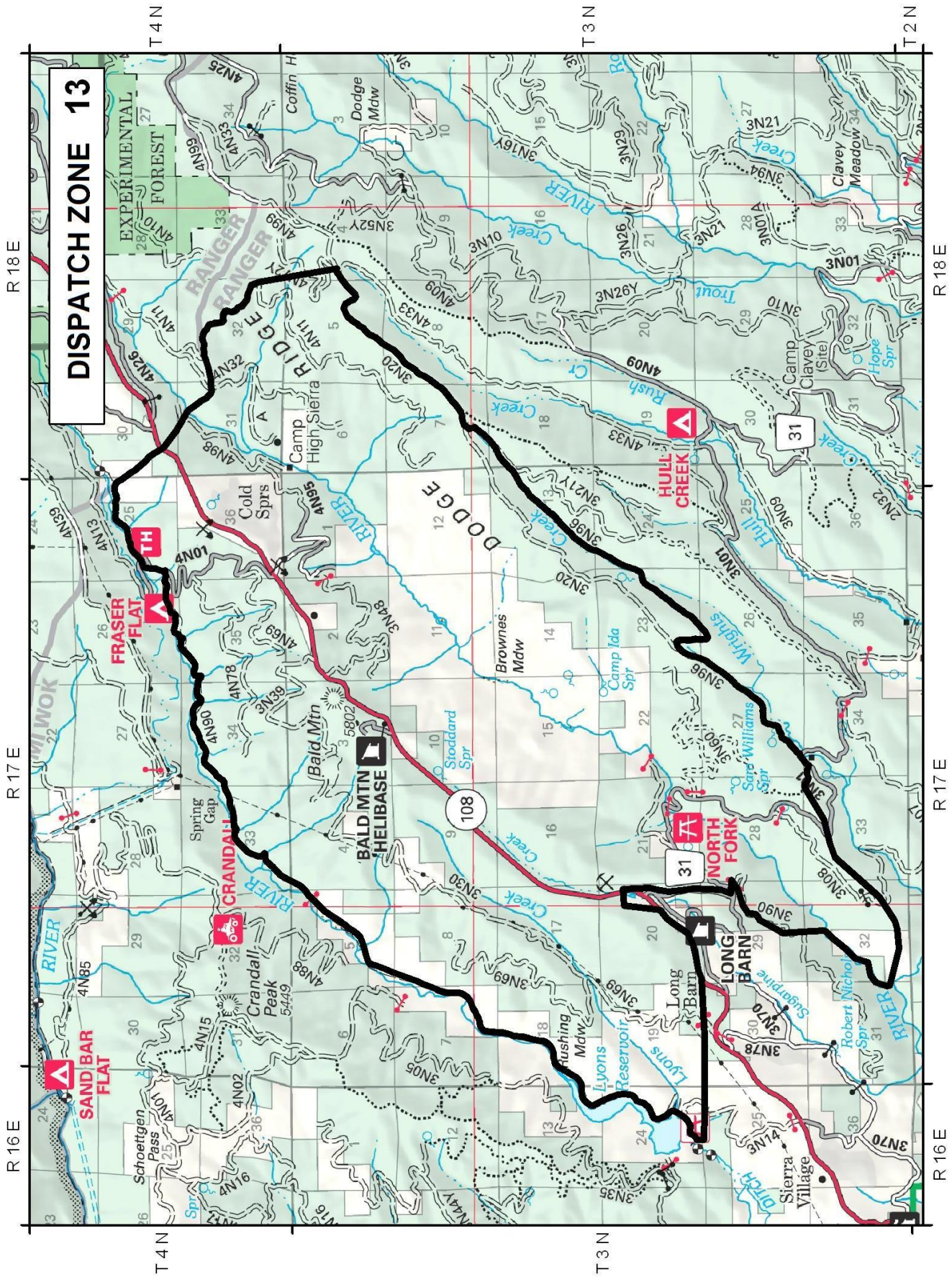


WILDCAD Run Card

Stanislaus National Forest – Fire Response

AREA - 13 (LONG BARN/BALD MOUNTAIN)

<u>Low Response</u> ENGINES (1): PREVENTION (1): OVERHEAD (1): CREW (1): LEO (1):	<u>Unit</u> E312 PAT11 BAT11 CRW1 ED7
<u>Moderate Response</u> ENGINES (1): HELICOPTER (1): CREW (1): PREVENTION (1): OVERHEAD (1): WATERTENDER (1):	<u>Unit</u> E332 HEL517 CRW20 PAT13 DIV1 WT212
<u>High Response</u> ENGINES (4): AIR ATTACK (1): AIR TANKER (2): LEAD PLANE (1): HELICOPTER (1): CREW (3): DOZER (1): WATERTENDER (1):	<u>Unit</u> E314, E313, E4485T, E4460T AA440 AT82, AT83 LEAD1 HEL404 CRW3, BSL1, BSL2 DZ51 WT242
<u>Notes</u> <ul style="list-style-type: none">- NOTIFY SPI IF ON SPI LAND 532-7141- AIRCRAFT HAZARD, POWERLINES- ENGINES FOR STRUCTURE PROTECTION IF NEEDED- BALD MTN HELIBASE, 3N 17E 3- STRUCTURES-LONGBARN, PETER PAM, MERRILL SPRINGS, COLD SPRINGS, BOY SCOUT CAMP	

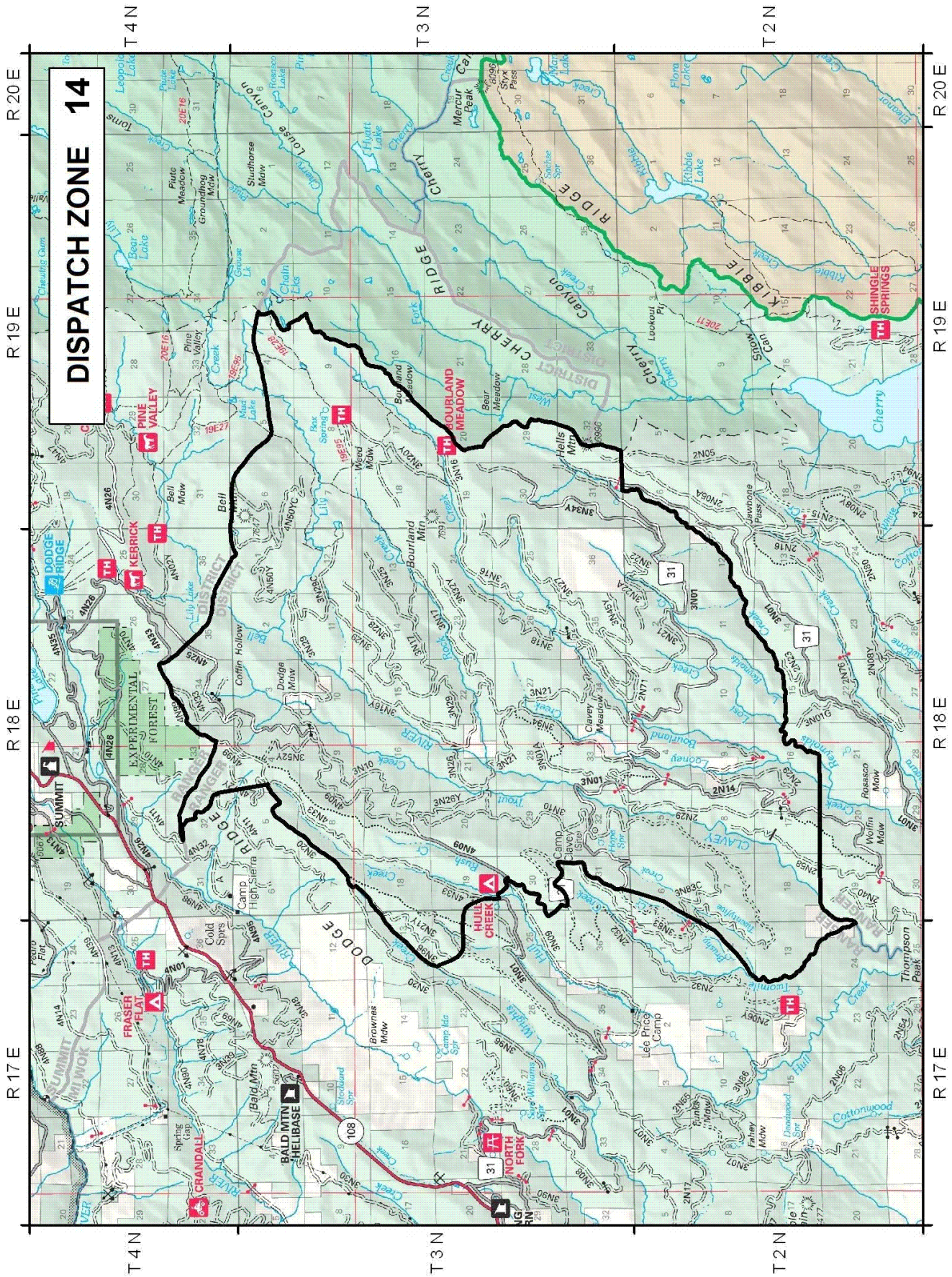


WILDCAD Run Card

Stanislaus National Forest – Fire Response

AREA - 14 (EIGHTEEN)

<u>Low Response</u> ENGINES (1): PREVENTION (1): OVERHEAD (1): LEO (1):	<u>Unit</u> E312 PAT11 BAT11 ED7
<u>Moderate Response</u> ENGINES (2): HELICOPTER (1): CREW (1): PREVENTION (1): OVERHEAD (1): WATERTENDER (1):	<u>Unit</u> E344, E313 HEL517 CRW1 PAT13 DIV1 WT212
<u>High Response</u> ENGINES (3): AIR ATTACK (1): AIR TANKER (2): LEAD PLANE (1): CREW (3): DOZER (1): WATERTENDER (1):	<u>Unit</u> E314, E332, E344 AA440 AT82, AT83 LEAD1 CRW20, CRW4, BSL1 DZ51 WT242
<u>Notes</u> - NOTIFY SPI IF ON SPI LAND 532-7141	



WILDCAD Run Card

Stanislaus National Forest – Fire Response

AREA - 15 (WRIGHTS CREEK)

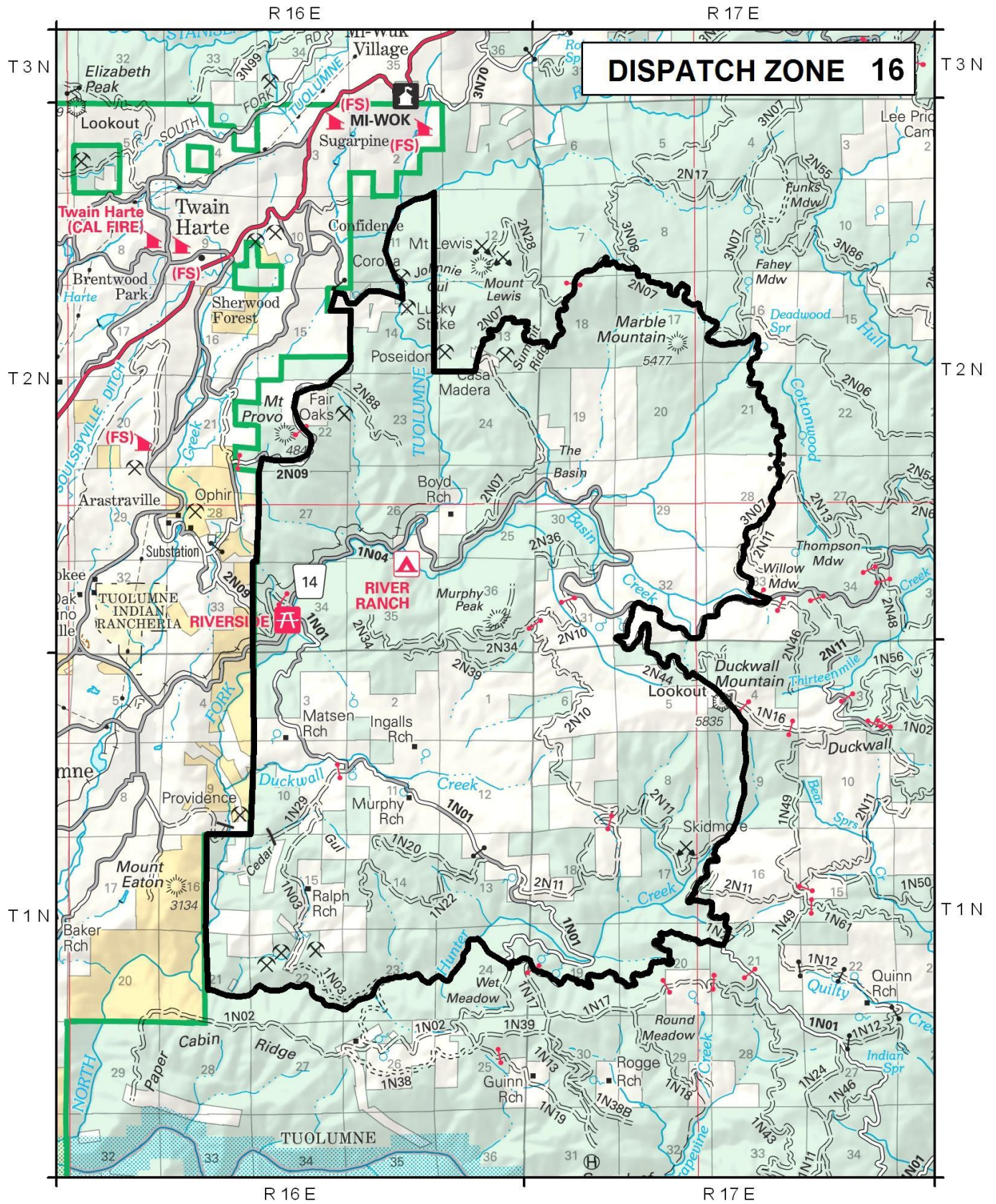
<u>Low Response</u> ENGINES (1): PREVENTION (1): OVERHEAD (1): LEO (1):	<u>Unit</u> E12 PAT11 BAT11 ED7
<u>Moderate Response</u> ENGINES (1): HELICOPTER (1): CREW (1): OVERHEAD (1): PREVENTION (1): WATERTENDER (1):	<u>Unit</u> E313 HEL517 CRW1 DIV1 PAT13 WT212
<u>High Response</u> ENGINES (4): AIR ATTACK (1): AIR TANKER (2): LEAD PLANE (1): HELICOPTER (1): CREW (3): DOZER (1): WATERTENDER (1):	<u>Unit</u> E332, E314, E344 AA440 AT82, AT83 LEAD1 HEL404 CRW20, CRW81TMI, BSL1 DZ51 WT242
<u>Notes</u> <ul style="list-style-type: none">- NOTIFY SPI IF ON SPI LAND 532-7141- STRUCTURES-HULLS MEADOW	

WILDCAD Run Card

Stanislaus National Forest – Fire Response

AREA - 16 (DUCKWALL)

<u>Low Response</u> ENGINES (1): PREVENTION (1): OVERHEAD (1): LEO (1):	<u>Unit</u> E313 PAT13 BAT11 ED7
<u>Moderate Response</u> ENGINES (1): HELICOPTER (1): CREW (1): PREVENTION (1): OVERHEAD (1): WATERTENDER (1):	<u>Unit</u> E813TMI HEL517 CRW1 PAT11 DIV1 WT212
<u>High Response</u> ENGINES (4): AIR ATTACK (1): AIR TANKER (2): LEAD PLANE (1): HELICOPTER (1): CREW (3): DOZER (1): WATERTENDER (1):	<u>Unit</u> E312, E344, E314, E4485T AA440 AT82, AT83 LEAD1 HEL404 CRW20, CRW4, CRW81TMI DZ51 WT242
<u>Notes</u> <ul style="list-style-type: none">- NOTIFY SPI IF ON SPI LAND 532-7141- ENGINES FOR STRUCTURE PROTECTION IF NEEDED	



WILDCAD Run Card
Stanislaus National Forest – Fire Response

AREA - 17 (THOMPSON PEAK)

<u>Low Response</u> ENGINES (1): PREVENTION (1): OVERHEAD (1): LEO (1):	<u>Unit</u> E313 PAT13 BAT11 ED7
<u>Moderate Response</u> ENGINES (1): HELICOPTER (1): CREW (1): PREVENTION (1): OVERHEAD (1): WATERTENDER (1):	<u>Unit</u> E813TMI HEL517 CRW1 PAT11 DIV1 WT212
<u>High Response</u> ENGINES (4): AIR ATTACK (1): AIR TANKER (2): LEAD (1): HELICOPTER (1): CREW (3): DOZER (1): WATERTENDER (1):	<u>Unit</u> E312 , E314, E4485T, E344 AA440 AT82, AT83 LEAD1 HEL404 CRW20, C41, CRW81TMI DZ51 WT242
<u>Notes</u> <ul style="list-style-type: none">- NOTIFY SPI IF ON SPI LAND 532-7141- ENGINES FOR STRUCTURE PROTECTION IF NEEDED	

WILDCAD Run Card

Stanislaus National Forest – Fire Response

AREA - 18 (PAPER CABIN/ROGGE)

<u>Low Response</u> ENGINES (1): PREVENTION (2): OVERHEAD (1): LEO (1):	<u>Unit</u> E313 PAT11, PAT13 BAT11 ED7
<u>Moderate Response</u> ENGINES (1): HELICOPTER (1): CREW (2): OVERHEAD (1): WATERTENDER (1):	<u>Unit</u> E813TMI HEL517 CRW1, CRW81TMI DIV1 WT212
<u>High Response</u> ENGINES (3): AIR ATTACK (1): AIR TANKER (2): LEAD PLANE (1): HELICOPTER (1): CREW (2): DOZER (1):	<u>Unit</u> E12, E813TMI, E4485T AA440 AT82, AT83 LEAD1 HEL404 CRW4, CRW81TMI, BSL1 DZ51
<u>Notes</u> - NOTIFY SPI IF ON SPI LAND 532-7141	

