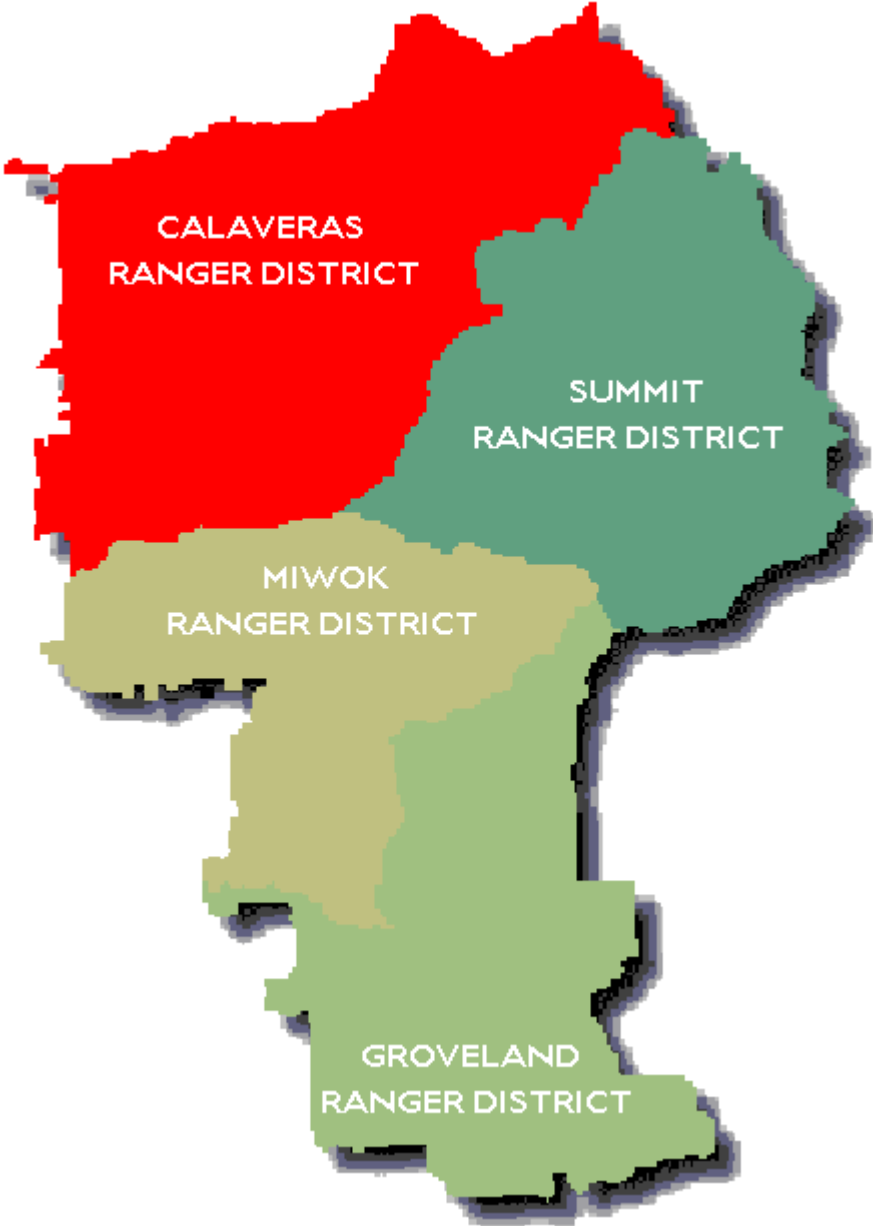


CALAVERAS RANGER DISTRICT



WILDCAD Run Card
Stanislaus National Forest – Fire Response

AREA - 20 (CALAVERAS DOME)

<u>Low Response</u> ENGINES (1): PREVENTION (1): OVERHEAD (1):	<u>Unit</u> E322 PAT24 DIV2
<u>Moderate Response</u> ENGINES (1): HELICOPTER (1): CREW (1): OVERHEAD (1):	<u>Unit</u> E4463T HEL517 CRW2 BAT21
<u>High Response</u> ENGINES (3): AIR ATTACK (1): AIR TANKER (2): LEAD PLANE (1): CREW (2): PREVENTION (1): WATERTENDER (1): DOZER (1):	<u>Unit</u> E4453T, E4483T, E4490T AA440 AT82, AT83 LEAD1 CRW20, VAL5 PAT23 WT12 DZ51
<u>Notes</u> <ul style="list-style-type: none">- PORTIONS OF SECTIONS IN T7N, R15E AND T7N, R16E ARE UNDER DIRECT PROTECTION OF THE ELDORADO NATIONAL FOREST AND COVERED UNDER THE ELDORADO NATIONAL FOREST – STANISLAUS NATIONAL FOREST MOU.- NOTIFY SPI IF ON SPI LAND 532-7141	

WILDCAD Run Card

Stanislaus National Forest – Fire Response

AREA - 21 (MOKE WILDERNESS)

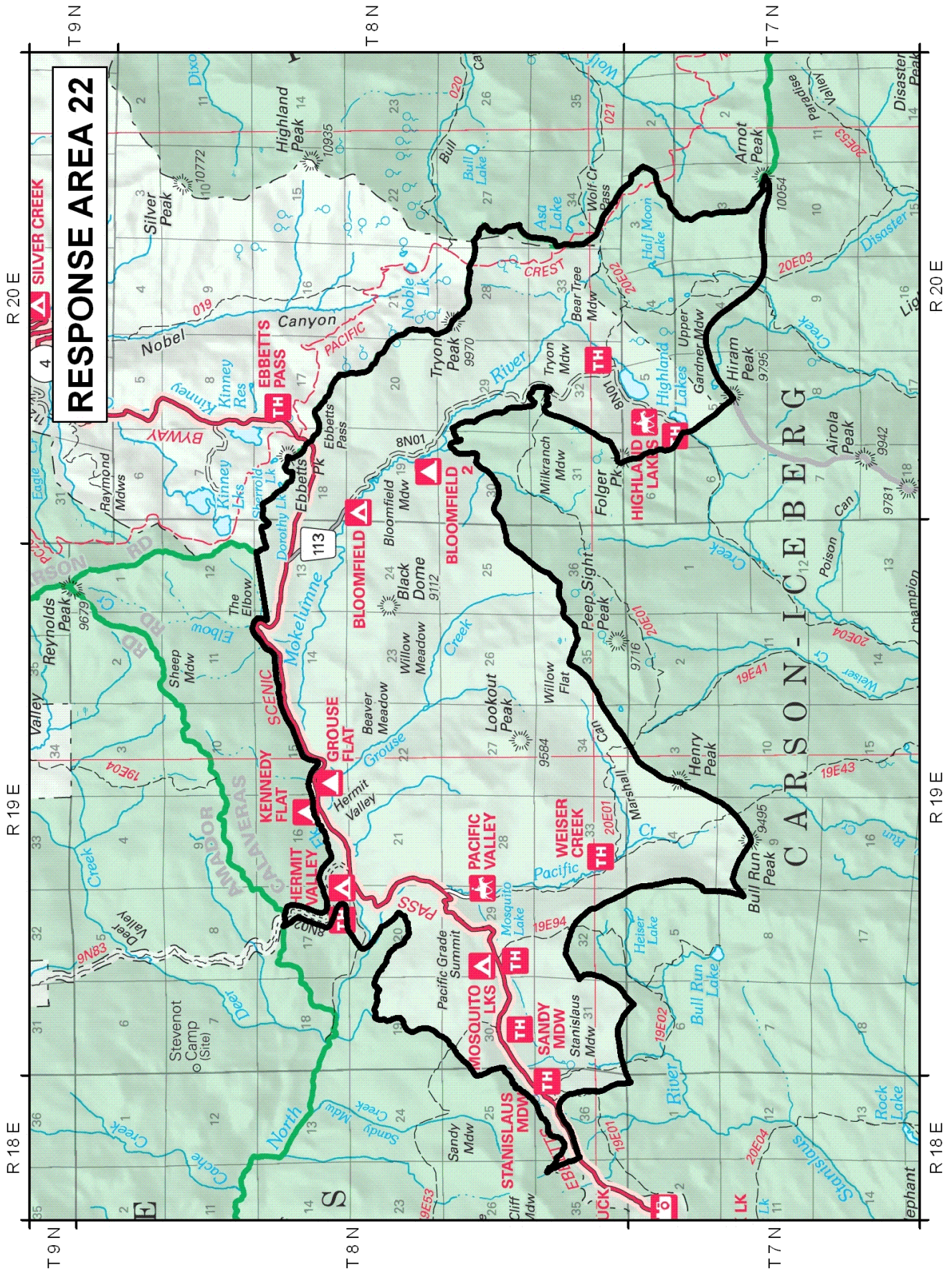
<u>Low Response</u> PREVENTION (1): OVERHEAD (1):	<u>Unit</u> PAT21 DIV2
<u>Moderate Response</u> PUT ON STANDBY (1):	<u>Unit</u> HEL517-STANDBY
<u>High Response</u> CREW (1): OVERHEAD (1):	<u>Unit</u> CRW2 BAT21
<u>Notes</u> <ul style="list-style-type: none">- STAGE LOCAL HELICOPTER UNTIL NEED IS DETERMINED- DUTY OFFICER REQUEST FOR ADDITIONAL RESOURCES- USE RECON	

WILDCAD Run Card

Stanislaus National Forest – Fire Response

AREA - 22 (NORTH HWY 4 CORRIDOR)

<u>Low Response</u> PREVENTION (1): OVERHEAD (1):	<u>Unit</u> PAT21 DIV2
<u>Moderate Response</u> ENGINES (1):	<u>Unit</u> E322
<u>High Response</u> ENGINES (1): CREW (1): PUT ON STANDBY (1): OVERHEAD (1):	<u>Unit</u> E4490T CRW2 HEL517-STANDBY BAT21
<u>Notes</u> <ul style="list-style-type: none">- STRUCTURES ALONG HWY 4 CORRIDOR- STAGE LOCAL HELICOPTER UNTIL NEED IS DETERMINED- DUTY OFFICER REQUEST FOR ADDITIONAL RESOURCES- CONSIDER USING EPFD WATERTENDER	



RESPONSE AREA 22

WILDCAD Run Card

Stanislaus National Forest – Fire Response

AREA - 23 (D52 CARSON ICEBERG)

<u>Low Response</u> PREVENTION (1): OVERHEAD (1):	<u>Unit</u> PAT21 DIV2
<u>Moderate Response</u> PUT ON STANDBY (1): OVERHEAD (1):	<u>Unit</u> HEL517-STANDBY BAT21
<u>High Response</u> CREW (1):	<u>Unit</u> CRW2
<u>Notes</u> <ul style="list-style-type: none">- STAGE LOCAL HELICOPTER UNTIL NEED IS DETERMINED- DUTY OFFICER REQUEST FOR ADDITIONAL RESOURCES- USE RECON	

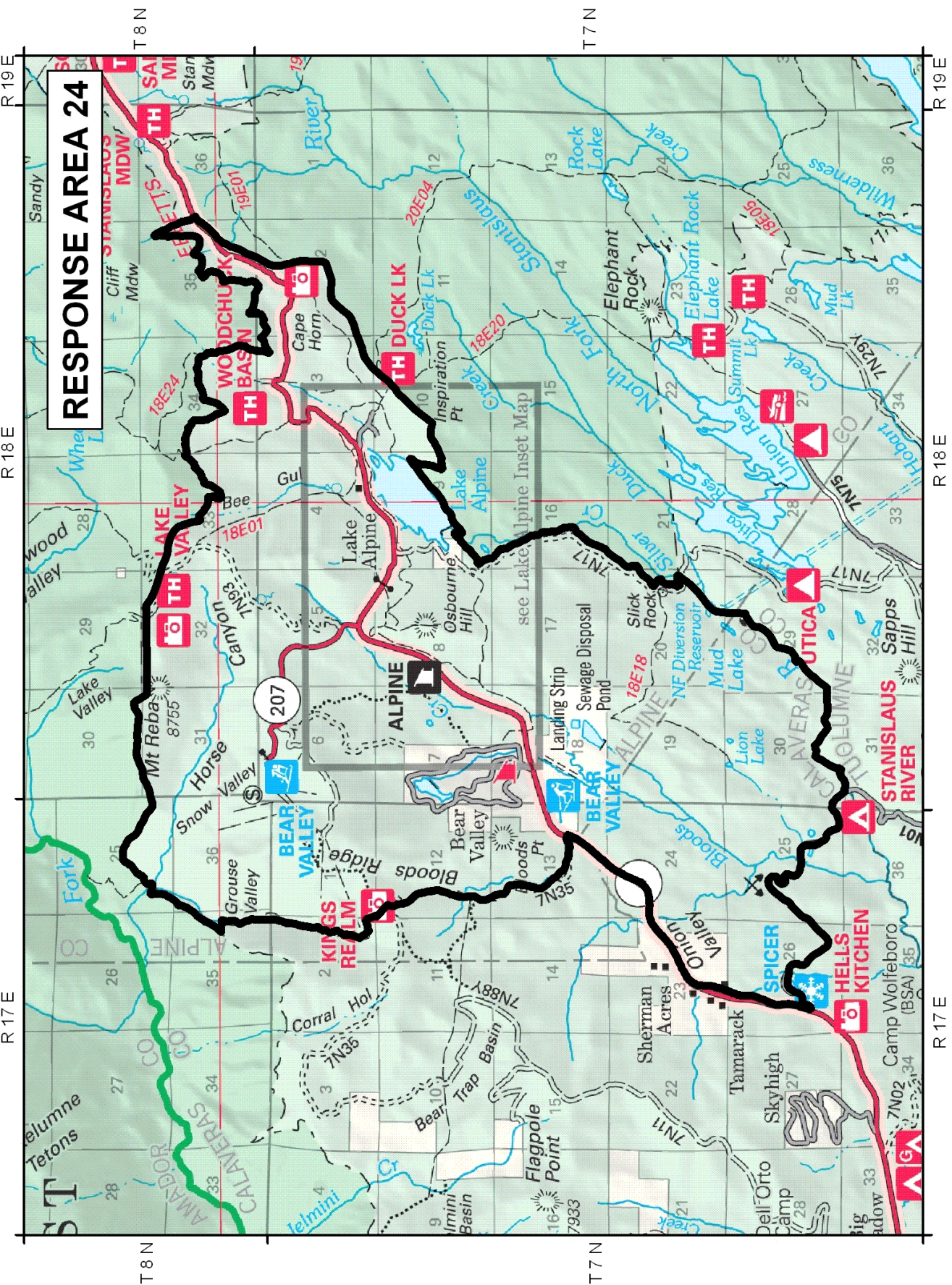
WILDCAD Run Card

Stanislaus National Forest – Fire Response

AREA - 24 (BEAR VALLEY)

<u>Low Response</u> ENGINES (2): PREVENTION (1): OVERHEAD (1):	<u>Unit</u> E322, E4490T PAT21 DIV2
<u>Moderate Response</u> CREW (1): ENGINES (1): HELICOPTER (1): PREVENTION (1): OVERHEAD (1):	<u>Unit</u> CRW2 E4463T HEL517 PAT23 BAT21
<u>High Response</u> ENGINES (3): AIR ATTACK (1): AIR TANKER (2): LEAD PLANE (1): CREW (1): WATERTENDER (1):	<u>Unit</u> E4464T, E4474T, E4452T AA440 AT82, AT83 LEAD1 CRW20 WT12
<u>Notes</u> <ul style="list-style-type: none">- STRUCTURES ALONG HWY 4 CORRIDOR- AIRCRAFT HAZARD, SKI LIFTS MT. REBA- CONSIDER USING EPFD WATERTENDER	

RESPONSE AREA 24

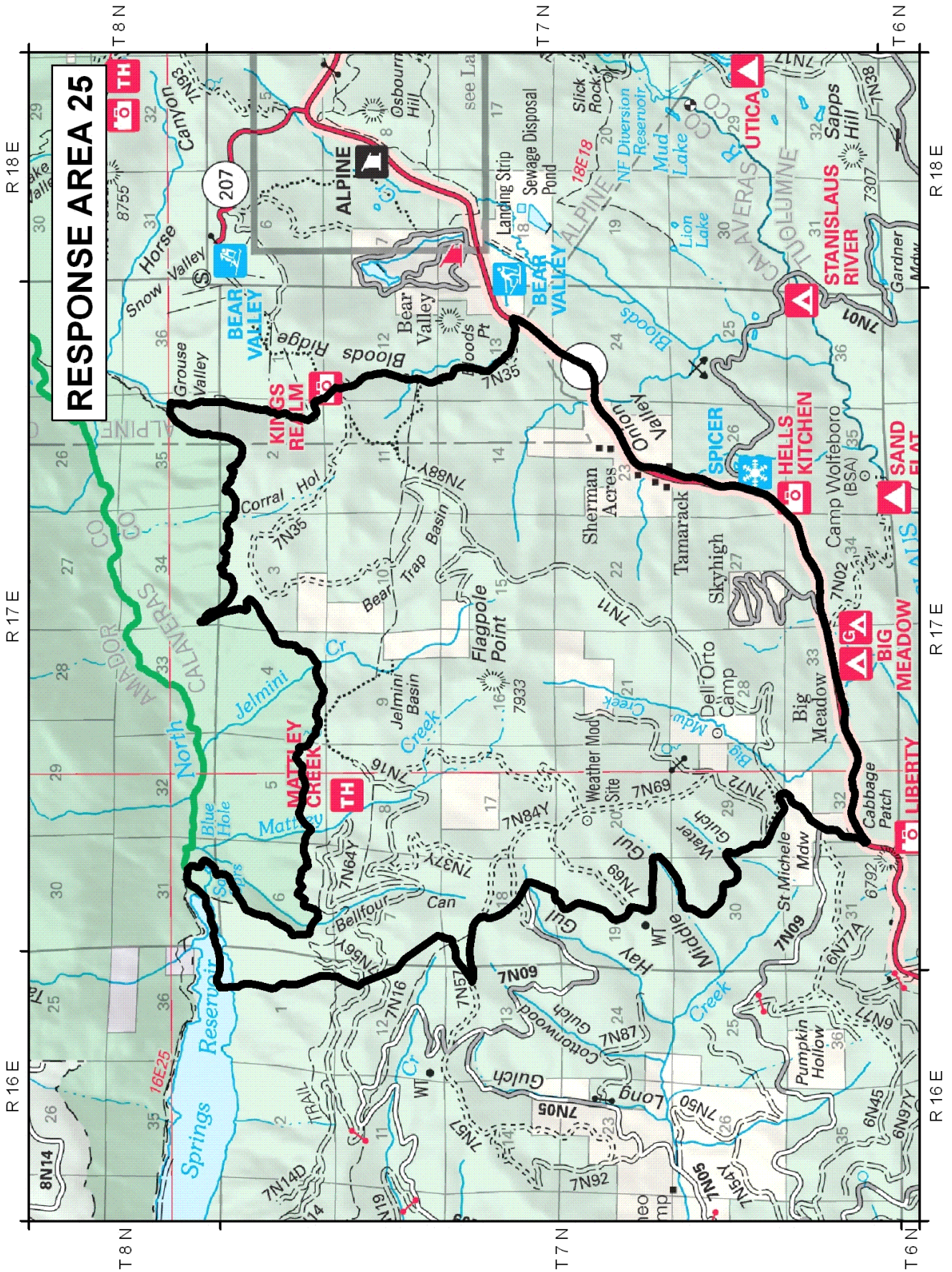


WILDCAD Run Card

Stanislaus National Forest – Fire Response

AREA - 25 (FLAG POLE PT)

<u>Low Response</u> ENGINES (1): PREVENTION (1): OVERHEAD (1):	<u>Unit</u> E322 PAT24 DIV2
<u>Moderate Response</u> ENGINES (1): HELICOPTER (1): CREW (1): PREVENTION (1): OVERHEAD (1):	<u>Unit</u> E4490T HEL517 CRW2 PAT23 BAT21
<u>High Response</u> ENGINES (2): AIR ATTACK (1): AIR TANKER (2): LEAD PLANE (1): CREW (1): DOZER (1):	<u>Unit</u> E4464T, E4463T AA440 AT82, AT83 LEAD1 CRW20 DZ51
<u>Notes</u> - CONSIDER USING EPFD WATERTENDER	



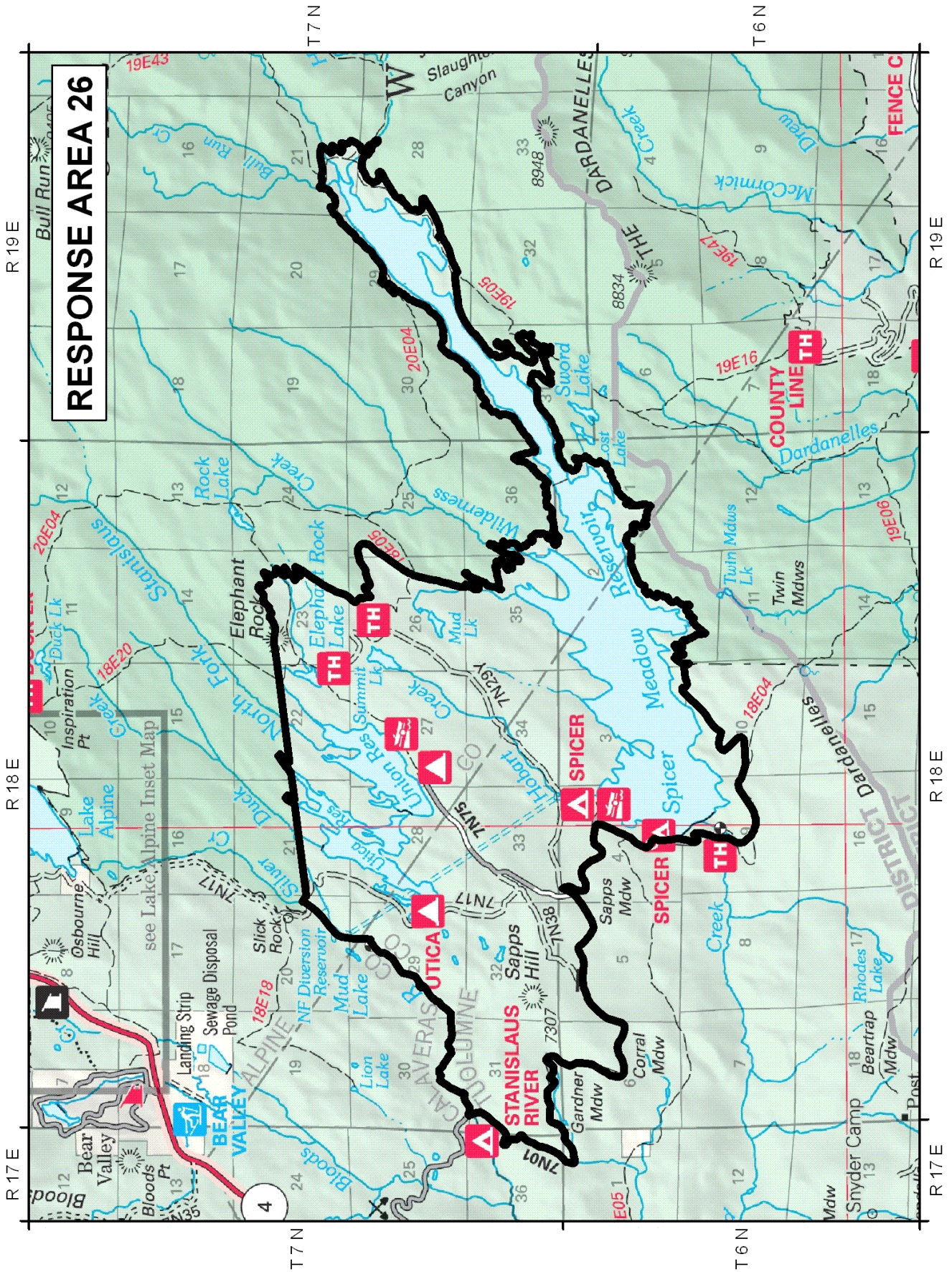
RESPONSE AREA 25

WILDCAD Run Card

Stanislaus National Forest – Fire Response

AREA - 26 (UNION/UTICA/SPICER)

<u>Low Response</u> ENGINES (1): PREVENTION (1): OVERHEAD (1):	Unit E322 PAT21 DIV2
<u>Moderate Response</u> ENGINES (1): HELICOPTER (1): OVERHEAD (1):	Unit E4490T HEL517 BAT21
<u>High Response</u> ENGINES (1): AIR ATTACK (1): AIR TANKER (2): LEAD PLANE (1): CREW (2): PREVENTION (1):	Unit E4474T AA440 AT82, AT83 LEAD1 CRW2, CRW20 PAT23
<u>Notes</u> - CONSIDER USING EPFD WATERTENDER - USE RECON	



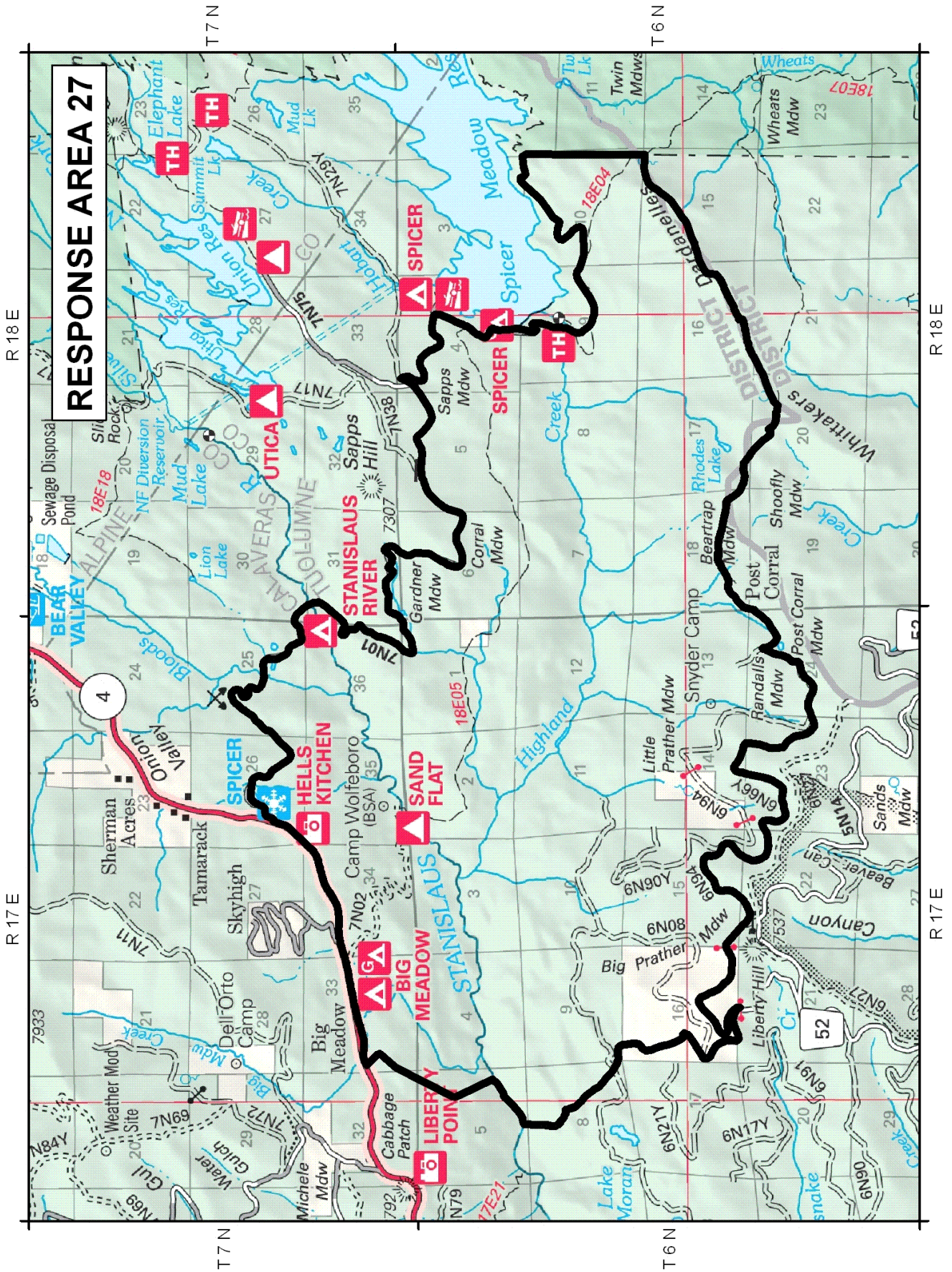
RESPONSE AREA 26

WILDCAD Run Card

Stanislaus National Forest – Fire Response

AREA - 27 (LIBERTY HILL)

<u>Low Response</u> PREVENTION (2): OVERHEAD (1):	<u>Unit</u> PAT23, PAT21 DIV2
<u>Moderate Response</u> ENGINES (1): HELICOPTER (1): OVERHEAD (1):	<u>Unit</u> E322 HEL517 BAT21
<u>High Response</u> ENGINES (2): AIR ATTACK (1): AIR TANKER (2): LEAD PLANE (1): CREW (2): WATERTENDER (1): DOZER (1): PREVENTION (1):	<u>Unit</u> E4474T, E4464T AA440 AT82, AT83 LEAD1 CRW2, CRW20 WT212 DZ51 PAT 24
<u>Notes</u> <ul style="list-style-type: none">- NOTIFY SPI IF ON SPI LAND 532-7141- EAST SIDE SEND E-34 BEFORE MURPHYS OR ESPERANZA- CONSIDER USING EPFD WATERTENDER- USE RECON	



WILDCAD Run Card
Stanislaus National Forest – Fire Response

AREA - 28 (POISON SPRINGS)

<u>Low Response</u> ENGINES (1): PREVENTION (1): OVERHEAD (1):	<u>Unit</u> E322 PAT23 DIV2
<u>Moderate Response</u> ENGINES (1): PREVENTION (1): HELICOPTER (1): OVERHEAD (1):	<u>Unit</u> E4464T PT24 HEL517 BAT21
<u>High Response</u> AIR ATTACK (1): AIR TANKER (2): LEAD PLANE (1): ENGINES (2): CREW (2): WATERTENDER (1): DOZER (1):	<u>Unit</u> AA440 AT82, AT83 LEAD1 E4464T, E4474T CRW2, CRW20 WT212 DZ51
<u>Notes</u> - USE RECON - CONSIDER USING EPFD WATERTENDER	

WILDCAD Run Card

Stanislaus National Forest – Fire Response

AREA - 29 (RATTLESNAKE)

<u>Low Response</u> ENGINES (1): PREVENTION (1): OVERHEAD (1):	<u>Unit</u> E322 PAT23 DIV2
<u>Moderate Response</u> ENGINES (1): HELICOPTER (1): OVERHEAD (1):	<u>Unit</u> E34 HEL517 BAT21
<u>High Response</u> ENGINES (2): AIR ATTACK (1): AIR TANKER (2): LEAD PLANE (1): PREVENTION (1): CREW (1):	<u>Unit</u> E4474T, E4464T AA440 AT82, AT83 LEAD1 PAT21 CRW20
<u>Notes</u> <ul style="list-style-type: none">- USE RECON- CONSIDER USING EPFD WATERTENDER- NOTIFY SPI IF ON SPI LAND 532-7141	

18E

17E

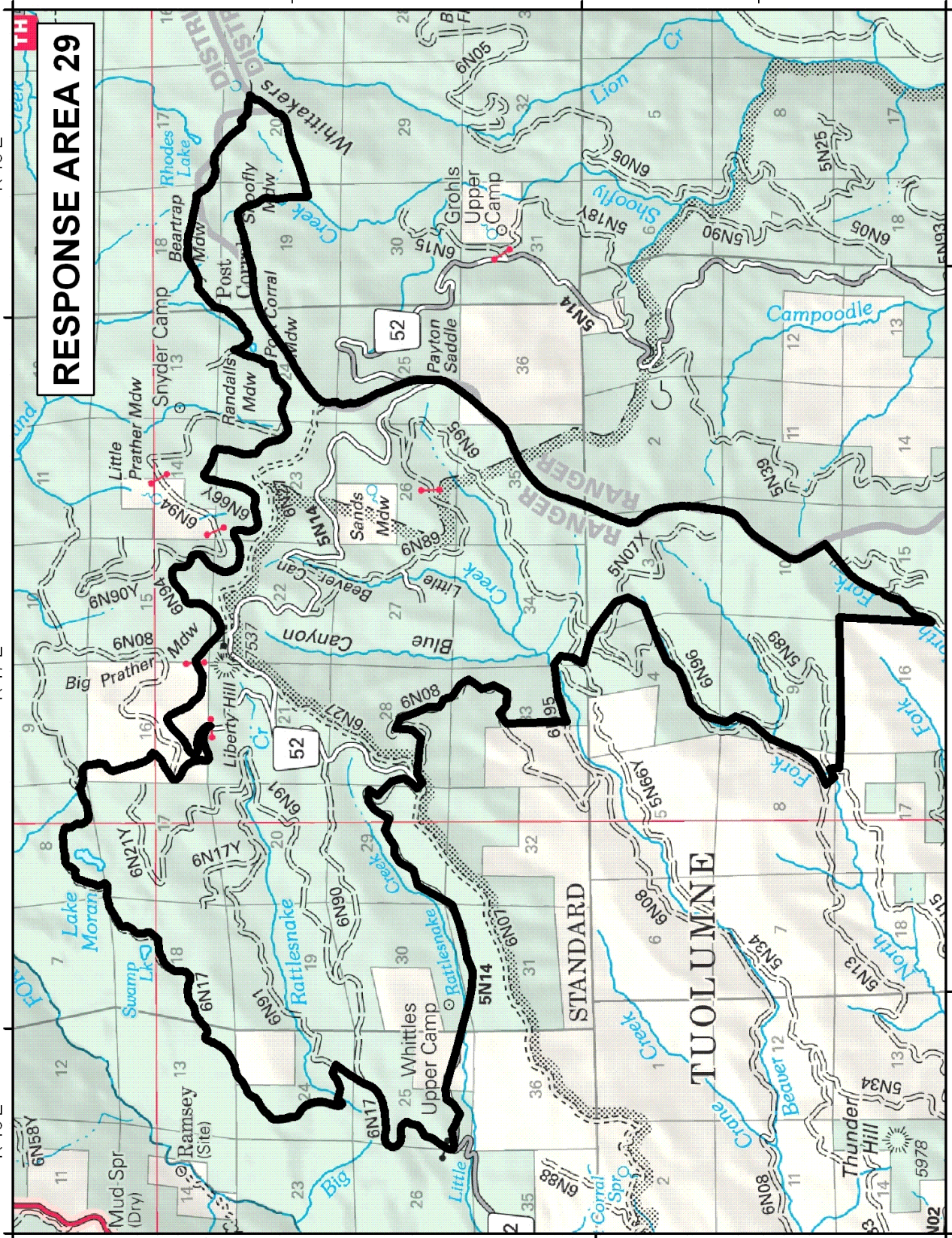
16E

R 18E

R 17E

R 16E

RESPONSE AREA 29



T 6N

T 5N

T 6N

T 5N

R 18E

R 17E

R 16E