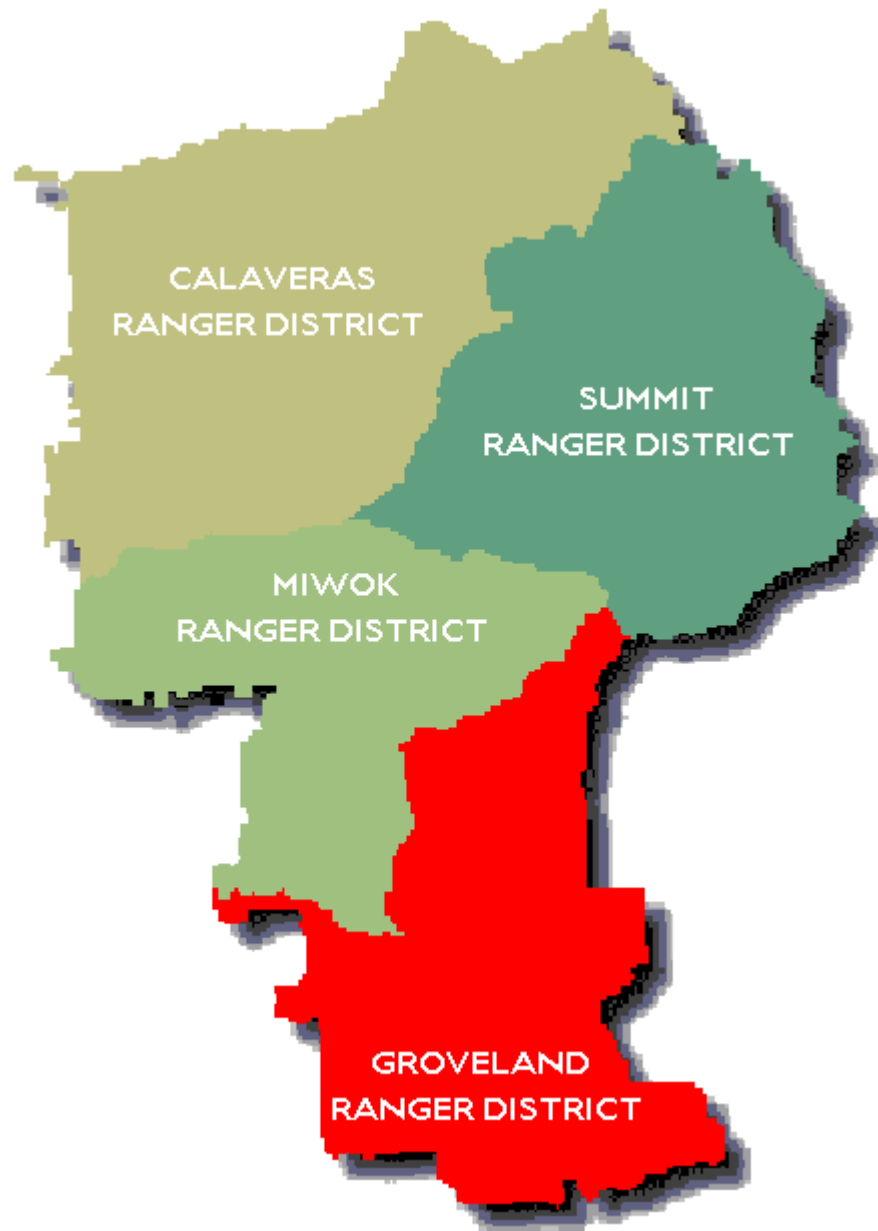
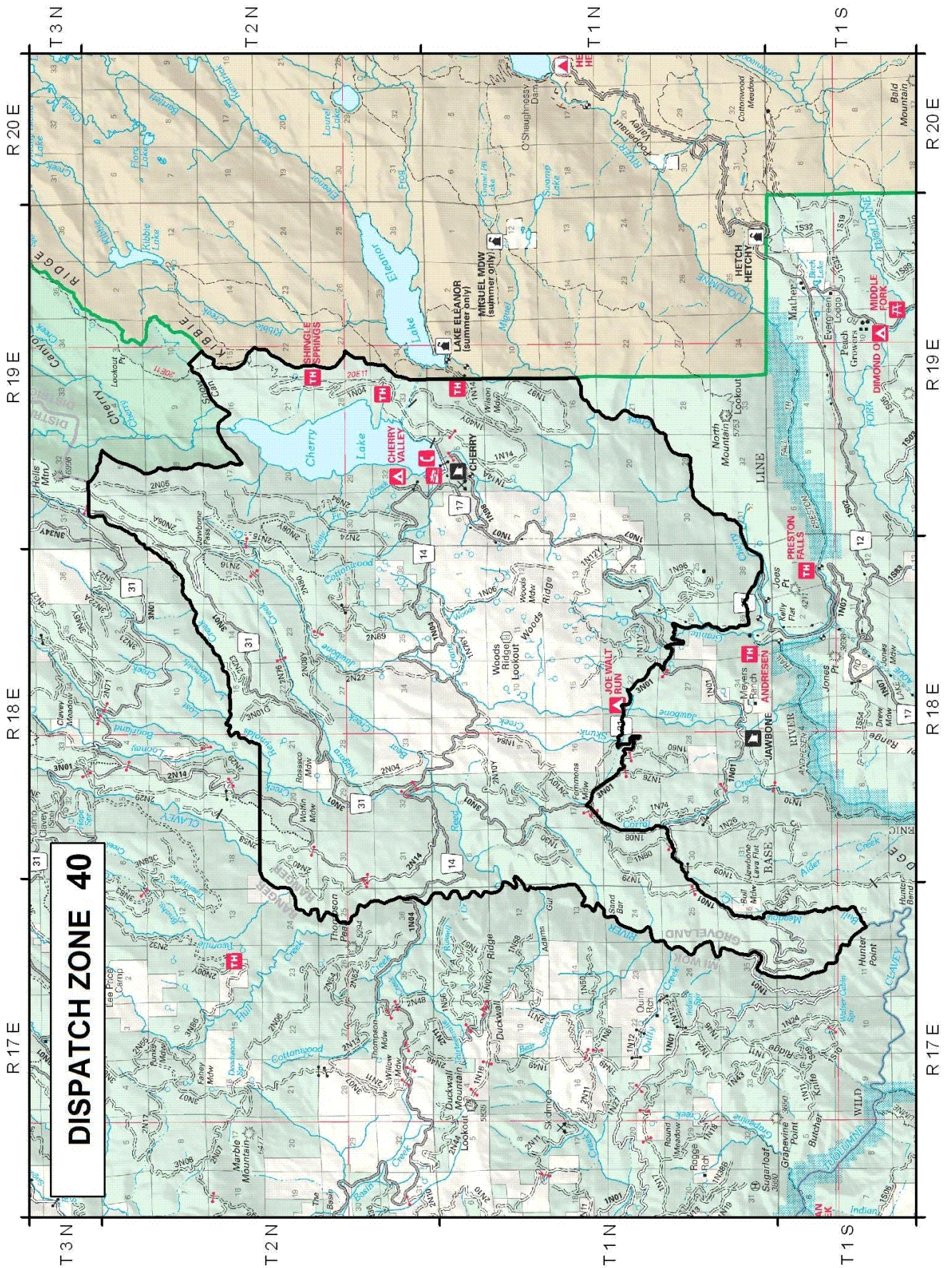


GROVELAND RANGER DISTRICT





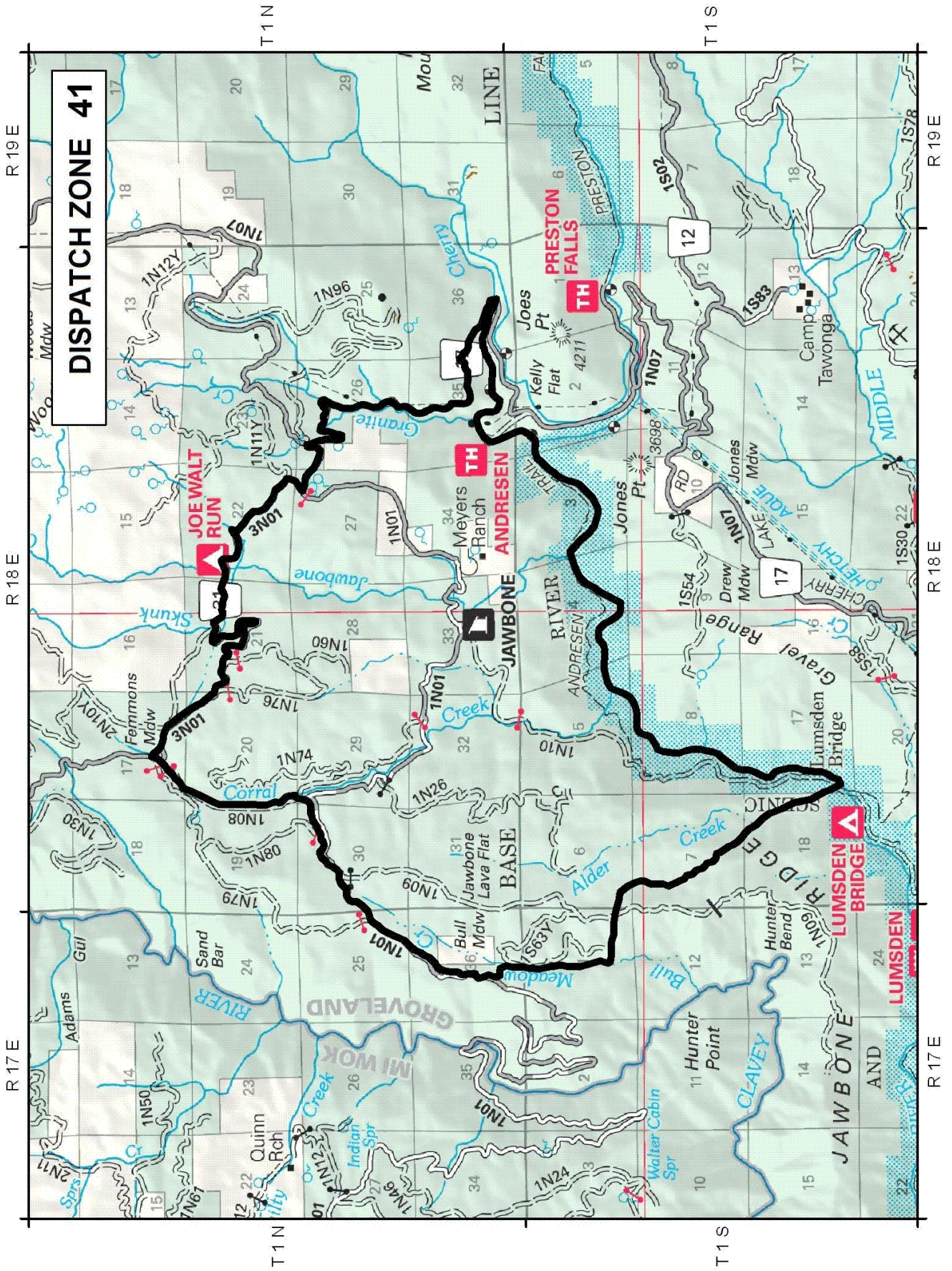
DISPATCH ZONE 40

WILDCAD Run Card

Stanislaus National Forest – Fire Response

AREA - 40 (CHERRY LAKE/WOODS RIDGE)

<u>Low Response</u> ENGINES (2): PREVENTION (1): OVERHEAD (1):	<u>Unit</u> E344, E346 PAT44 DIV4
<u>Moderate Response</u> ENGINES (1): AIR ATTACK (1): AIR TANKER (1): LEAD PLANE (1): HELICOPTER (1): CREW (1): OVERHEAD (1): WATERTENDER (1): DOZER (1):	<u>Unit</u> E342 AA440 AT82 LEAD1 HEL517 CRW4 BAT41 WT42 DZ51
<u>High Response</u> ENGINES (3): CREW (1) AIR TANKER (1):	<u>Unit</u> E343, E345, E34476T CREW 41 AT83
<u>Notes</u> <ul style="list-style-type: none">- AIRCRAFT HAZARD, POWERLINES- NOTIFY SPI IF ON SPI LAND 532-7141	



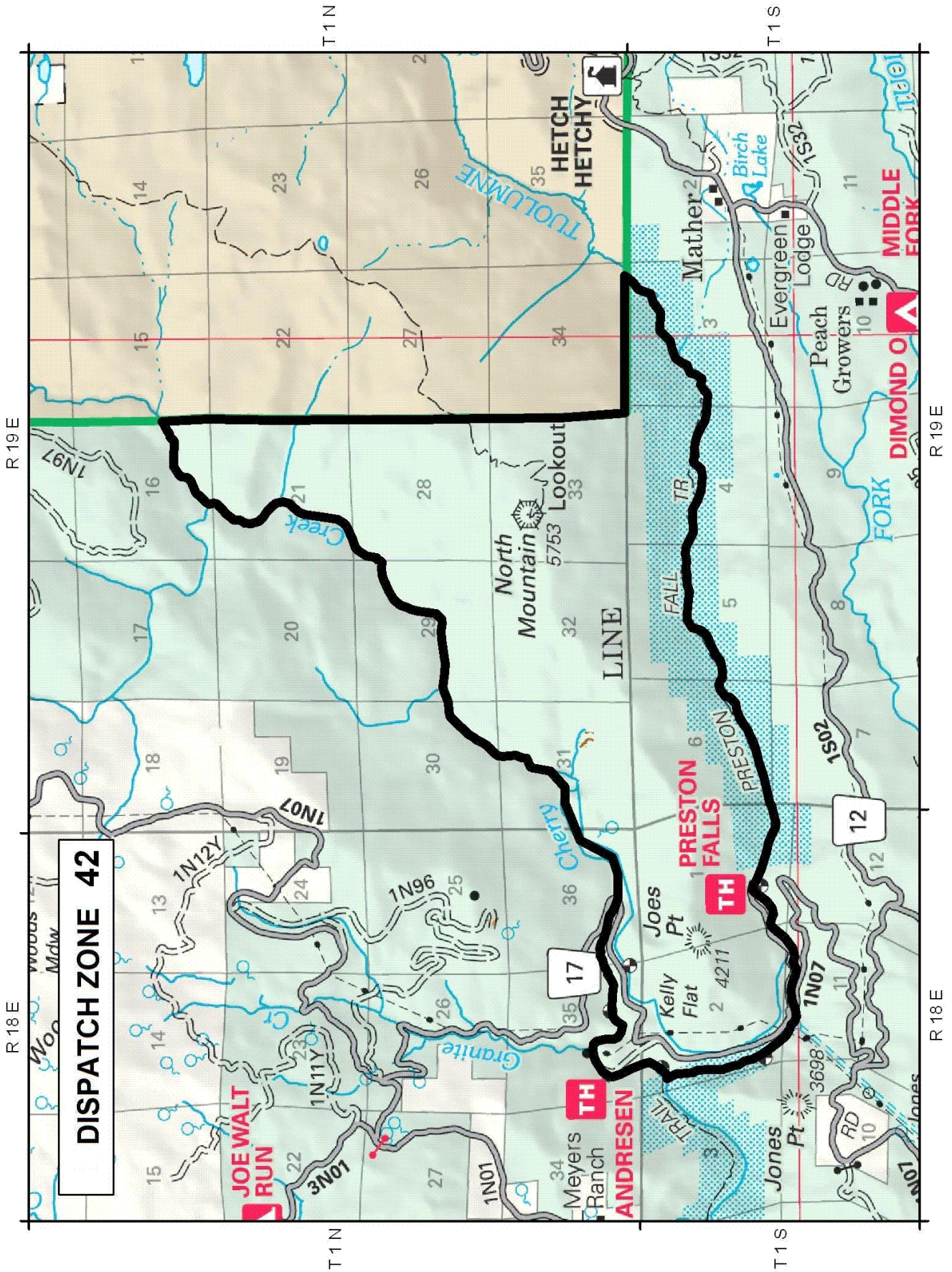
DISPATCH ZONE 41

WILDCAD Run Card

Stanislaus National Forest – Fire Response

AREA - 41 (JAWBONE STATION)

<u>Low Response</u> ENGINES (2): PREVENTION (1): OVERHEAD (1):	<u>Unit</u> E344, E346 PAT44 DIV4
<u>Moderate Response</u> ENGINES (1): AIR ATTACK (1): AIR TANKER (2): LEAD PLANE (1): HELICOPTER (1): CREW (1): OVERHEAD (1): WATERTENDER (1): DOZER (1):	<u>Unit</u> E342 AA440 AT82, AT83 LEAD1 HEL517 CRW4 BAT41 WT42 DZ51
<u>High Response</u> ENGINES (3): AIR TANKER (1): CREW (1):	<u>Unit</u> E343, E345, E34476T AT1 CRW41
<u>Notes</u> <ul style="list-style-type: none">- AIRCRAFT HAZARD, POWERLINES- TUOLUMNE RIVER-WILD&SCENIC CORRIDOR- NOTIFY SPI IF ON SPI LAND 532-7141	

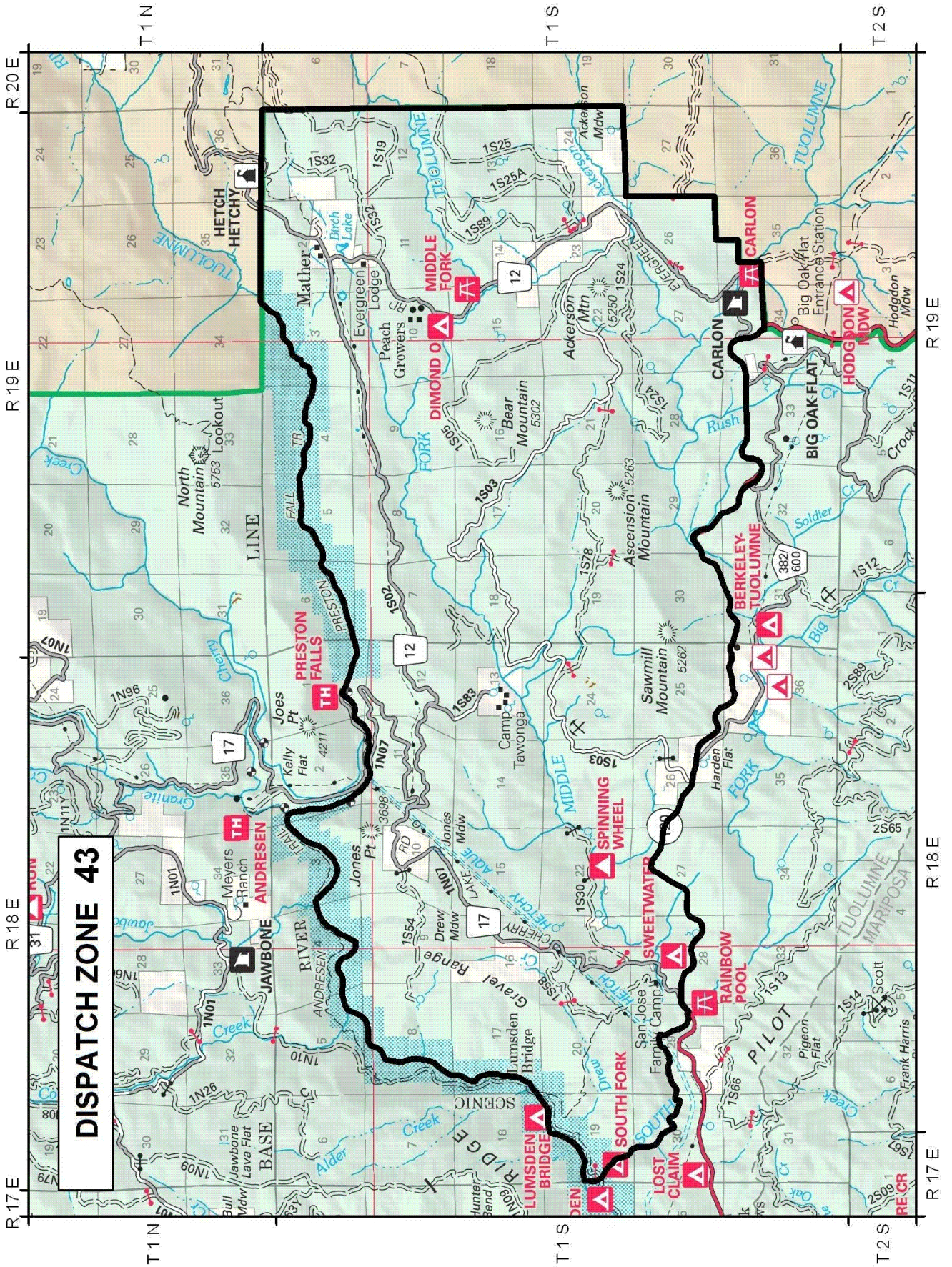


DISPATCH ZONE 42

WILDCAD Run Card
Stanislaus National Forest – Fire Response

AREA - 42 (NORTH MOUNTAIN)

<u>Low Response</u> ENGINES (2): PREVENTION (1): OVERHEAD (1):	<u>Unit</u> E344, E346 PAT44 DIV4
<u>Moderate Response</u> ENGINES (1): AIR ATTACK (1): AIR TANKER (1): LEAD PLANE (1): HELICOPTER (1): CREW (1): OVERHEAD (1): WATERTENDER (1): DOZER (1):	<u>Unit</u> E342 AA440 AT82 LEAD1 HEL551 CRW4 BAT41 WT42 DZ51
<u>High Response</u> ENGINES (2): AIR TANKER (2): HELICOPTER (1): CREW (1):	<u>Unit</u> E343, E345 AT83, AT1 HEL517 CRW41
<u>Notes</u> - TUOLUMNE RIVER-WILD&SCENIC CORRIDOR	



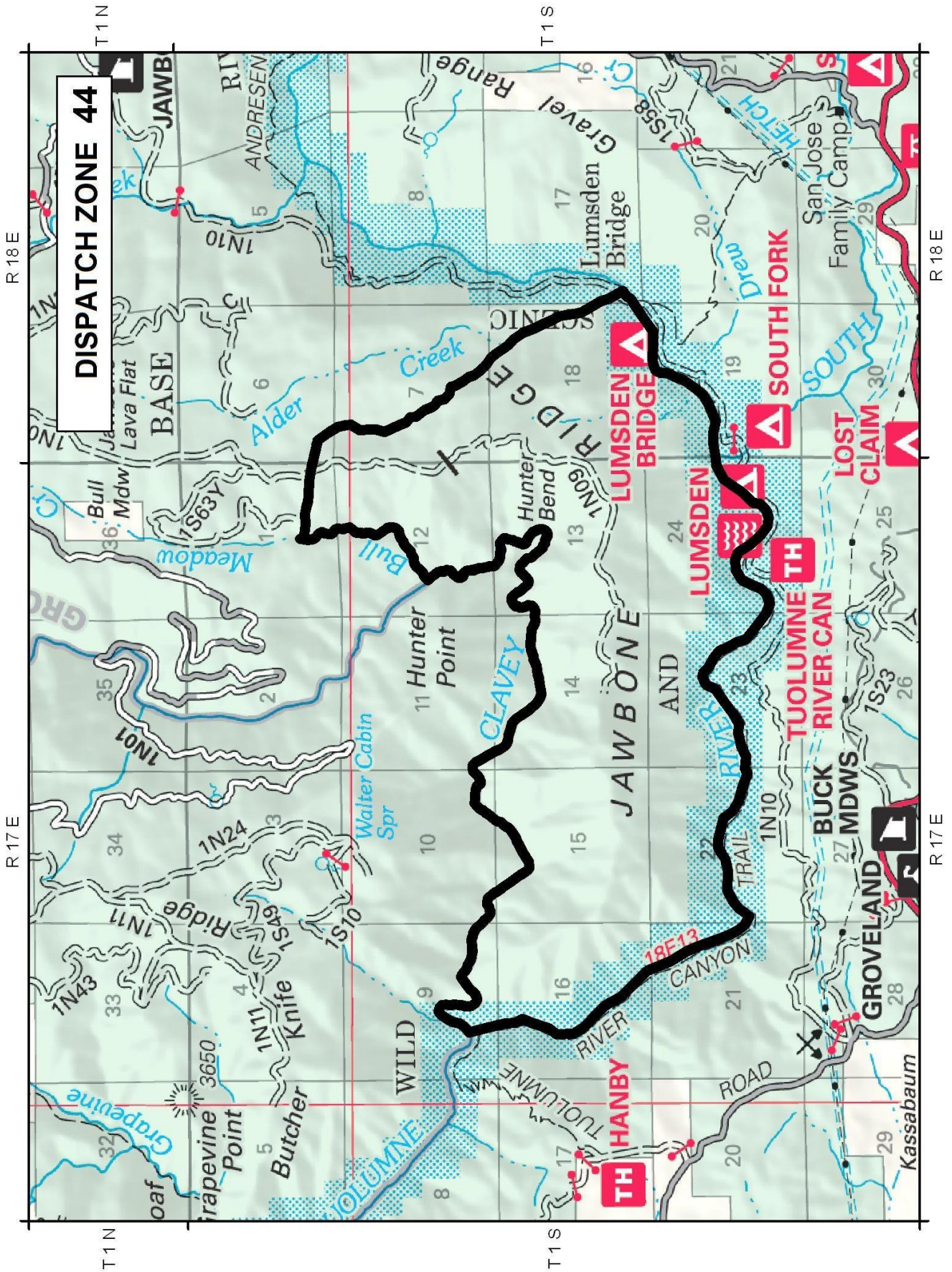
DISPATCH ZONE 43

WILDCAD Run Card

Stanislaus National Forest – Fire Response

AREA - 43 (SAWMILL MTN/TOWANGA)

<u>Low Response</u> ENGINES (2): PREVENTION (1): OVERHEAD (1):	<u>Unit</u> E346, E342 PAT43 DIV4
<u>Moderate Response</u> ENGINES (1): AIR ATTACK (1): AIR TANKER (1): LEAD PLANE (1): HELICOPTER (1): CREW (1): OVERHEAD (1): WATERTENDER (1): DOZER (1):	<u>Unit</u> E343 AA440 AT82 LEAD1 HEL551 CRW4 BAT41 WT42 DZ51
<u>High Response</u> ENGINES (4): AIR TANKER (2): HELICOPTER (1):	<u>Unit</u> E345, E344, E34476T, E34466T AT83, AT1 HEL517
<u>Notes</u> <ul style="list-style-type: none">- AIRCRAFT HAZARD, POWERLINES- ENGINES FOR STRUCTURE PROTECTION IF NEEDED- DIST.NOTIFY LANDOWNERS ON PRIVATE LAND	

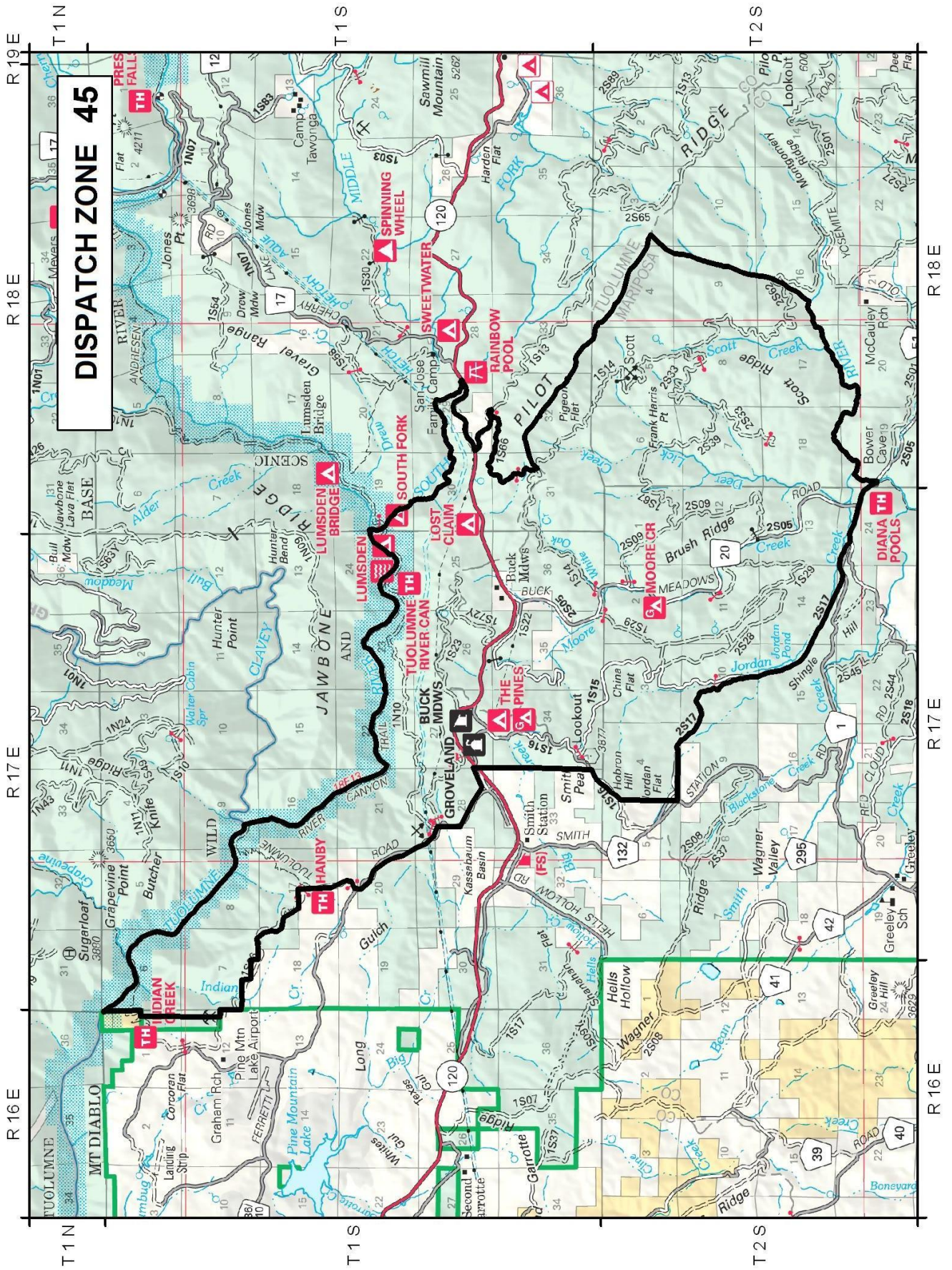


DISPATCH ZONE 44

WILDCAD Run Card
Stanislaus National Forest – Fire Response

AREA - 44 (JAWBONE RIDGE)

<u>Low Response</u> ENGINES (2): PREVENTION (1): OVERHEAD (1):	<u>Unit</u> E344, E346 PAT44 DIV4
<u>Moderate Response</u> ENGINES (1): AIR ATTACK (1): AIR TANKER (2): LEAD PLANE (1): HELICOPTER (1): CREW (1): OVERHEAD (1): WATERTENDER (1): DOZER (1):	<u>Unit</u> E342 AA440 AT82, AT83 LEAD1 HEL517 CRW4 BAT41 WT42 DZ51
<u>High Response</u> ENGINES (3): AIR TANKER (2): HELICOPTER (1): CREW1 (1):	<u>Unit</u> E343, E345, E34476T AT1, AT2 HEL551 CRW41
<u>Notes</u> <ul style="list-style-type: none">- POWERLINES-SOUTH END- TUOL. RIVER-WIL&SCENIC CORRIDOR- LIMITED ROAD ACCESS- PRIMARILY HANDCREW SHOW	



WILDCAD Run Card

Stanislaus National Forest – Fire Response

AREA - 45 (BUCK MEADOWS)

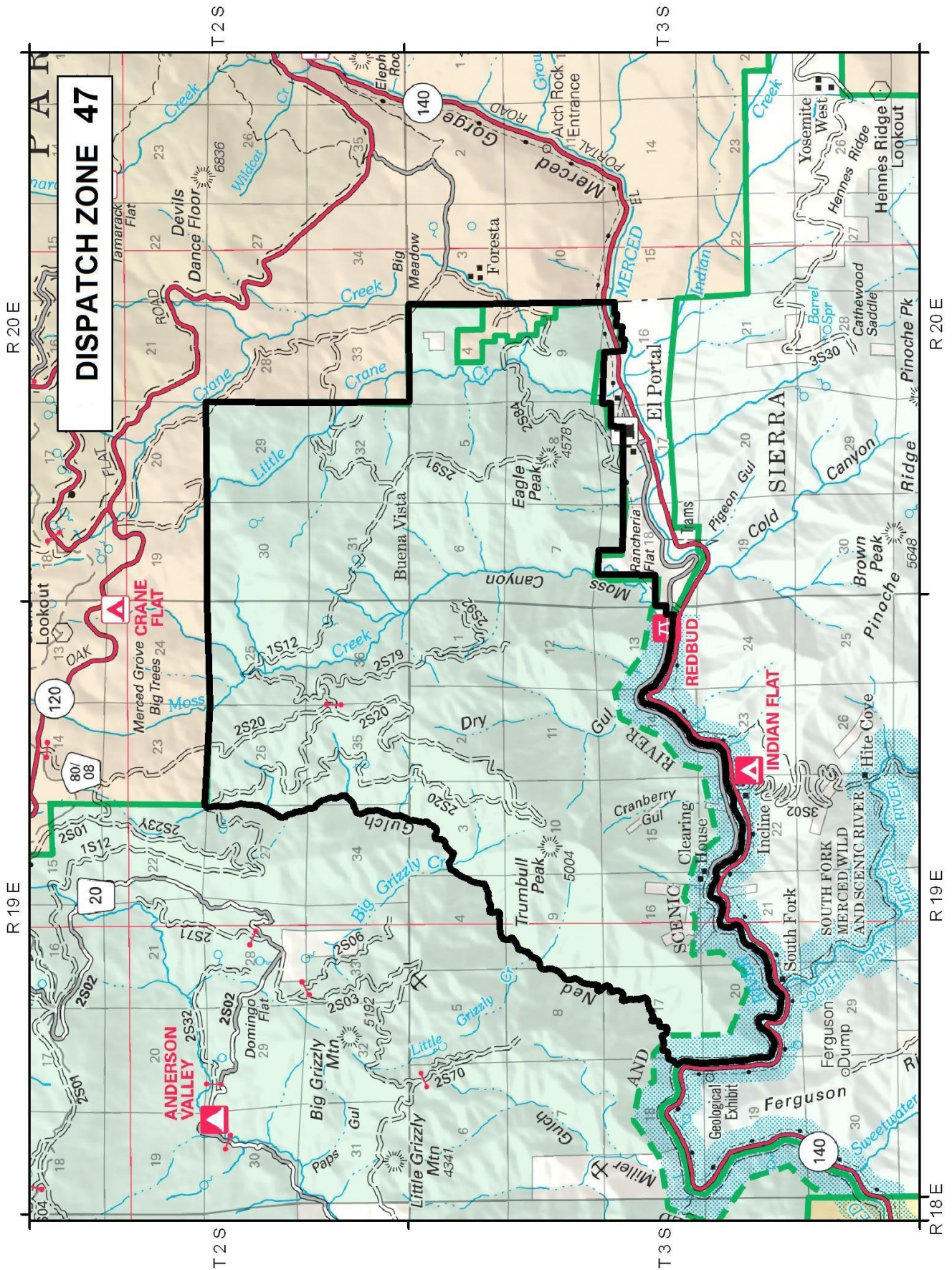
<u>Low Response</u> ENGINES (1): PREVENTION (1): OVERHEAD (1):	<u>Unit</u> E342 PAT42 DIV4
<u>Moderate Response</u> ENGINES (2): AIR ATTACK (1): AIR TANKER (1): LEAD PLANE (1): HELICOPTER (1): CREW (1): OVERHEAD (1): WATERTENDER (1): DOZER (1):	<u>Unit</u> E343, E346 AA440 AT82 LEAD1 HEL517 CRW4 BAT41 WT42 DZ51
<u>High Response</u> ENGINES (4): AIR TANKER (3): CREW1 (1):	<u>Unit</u> E345, E344, E34476T, E34466T AT83, AT1, AT2 CRW41
<u>Notes</u> <ul style="list-style-type: none">- AIRCRAFT HAZARD, POWERLINES- ENGINES FOR STRUCTURE PROTECTION IF NEEDED- DIST.NOTIFY LANOWNERS ON PRIVATE LAND	

WILDCAD Run Card

Stanislaus National Forest – Fire Response

AREA - 46 (PILOT PEAK/CROCKER RIDGE)

<u>Low Response</u> ENGINES (1): PREVENTION (1): OVERHEAD (1):	<u>Unit</u> E346 PAT42 DIV4
<u>Moderate Response</u> ENGINES (2): AIR ATTACK (1): AIR TANKER (1): LEAD PLANE (1): HELICOPTER (1): CREW (1): OVERHEAD (1): WATERTENDER (1): DOZER (1):	<u>Unit</u> E342, E345 AA440 AT82 LEAD1 HEL551 CRW4 BAT41 WT42 DZ51
<u>High Response</u> ENGINES (3): AIR TANKER (3): HELICOPTER (1): CREW1 (1):	<u>Unit</u> E343, E34476T, E34466T AT83, AT1, AT2 HEL517 CRW41
<u>Notes</u> - DIST.NOTIFY LANDOWNERS ON PRIVATE LAND	



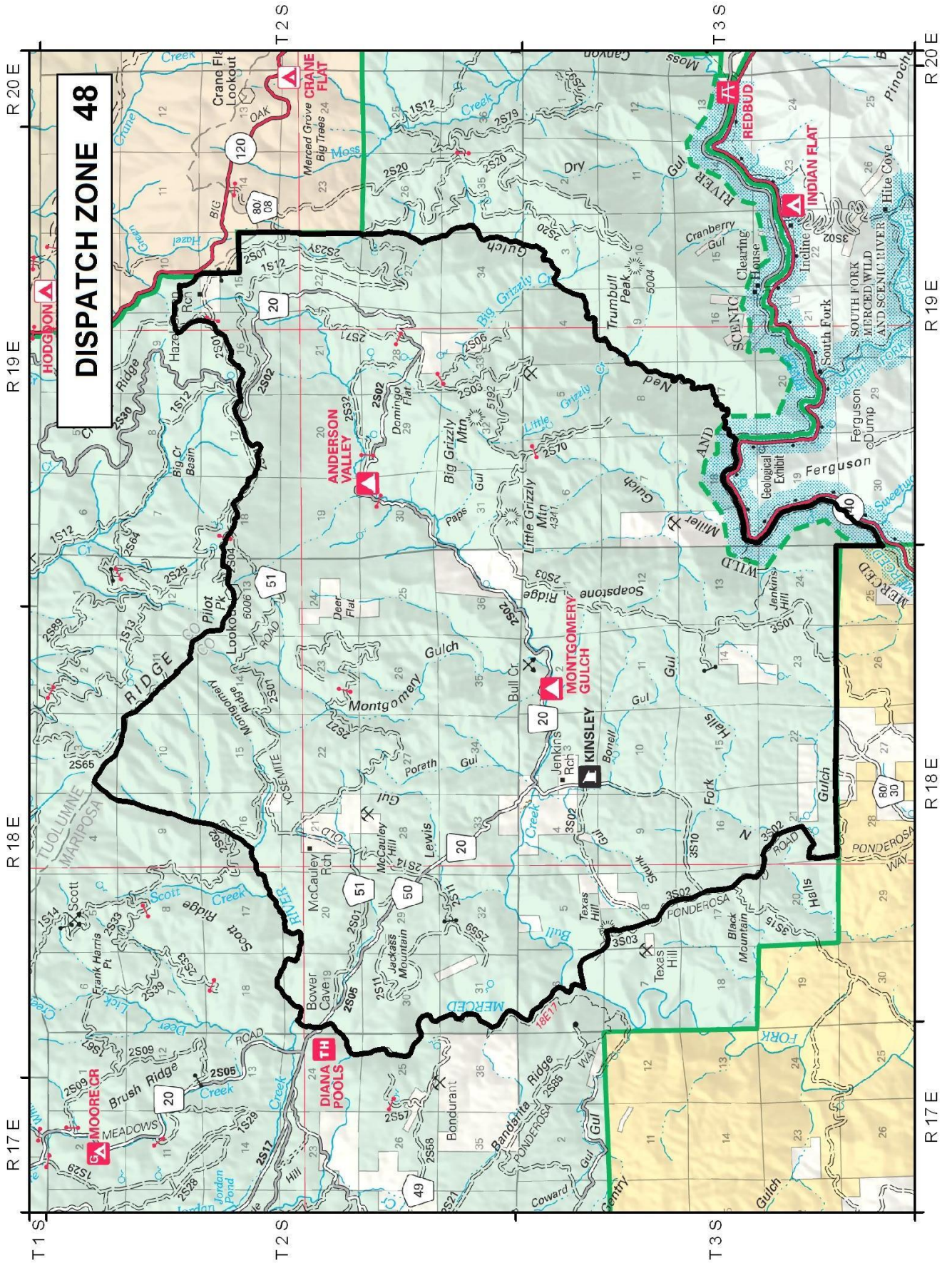
DISPATCH ZONE 47

WILDCAD Run Card

Stanislaus National Forest – Fire Response

AREA - 47 (MOSS CANYON/EL PORTAL)

<u>Low Response</u> ENGINES (1): HELICOPTER (1): CREW (1): PREVENTION (1): OVERHEAD (1):	<u>Unit</u> E346 HEL551 CRW4 PAT43 DIV4
<u>Moderate Response</u> ENGINES (2): AIR ATTACK (1): AIR TANKER (1): LEAD PLANE (1): HELICOPTER (1): OVERHEAD (1): WATERTENDER (1):	<u>Unit</u> E343, E342 AA440 AT82 LEAD1 HEL517 BAT41 WT42
<u>High Response</u> ENGINES (4): AIR TANKER (3): CREW1 (1): DOZER (1):	<u>Unit</u> E345, E34476T, E34466T, E344 AT83, AT1, AT2 CRW41 DZ51
<u>Notes</u> - POWERLINES-SOUTH END	

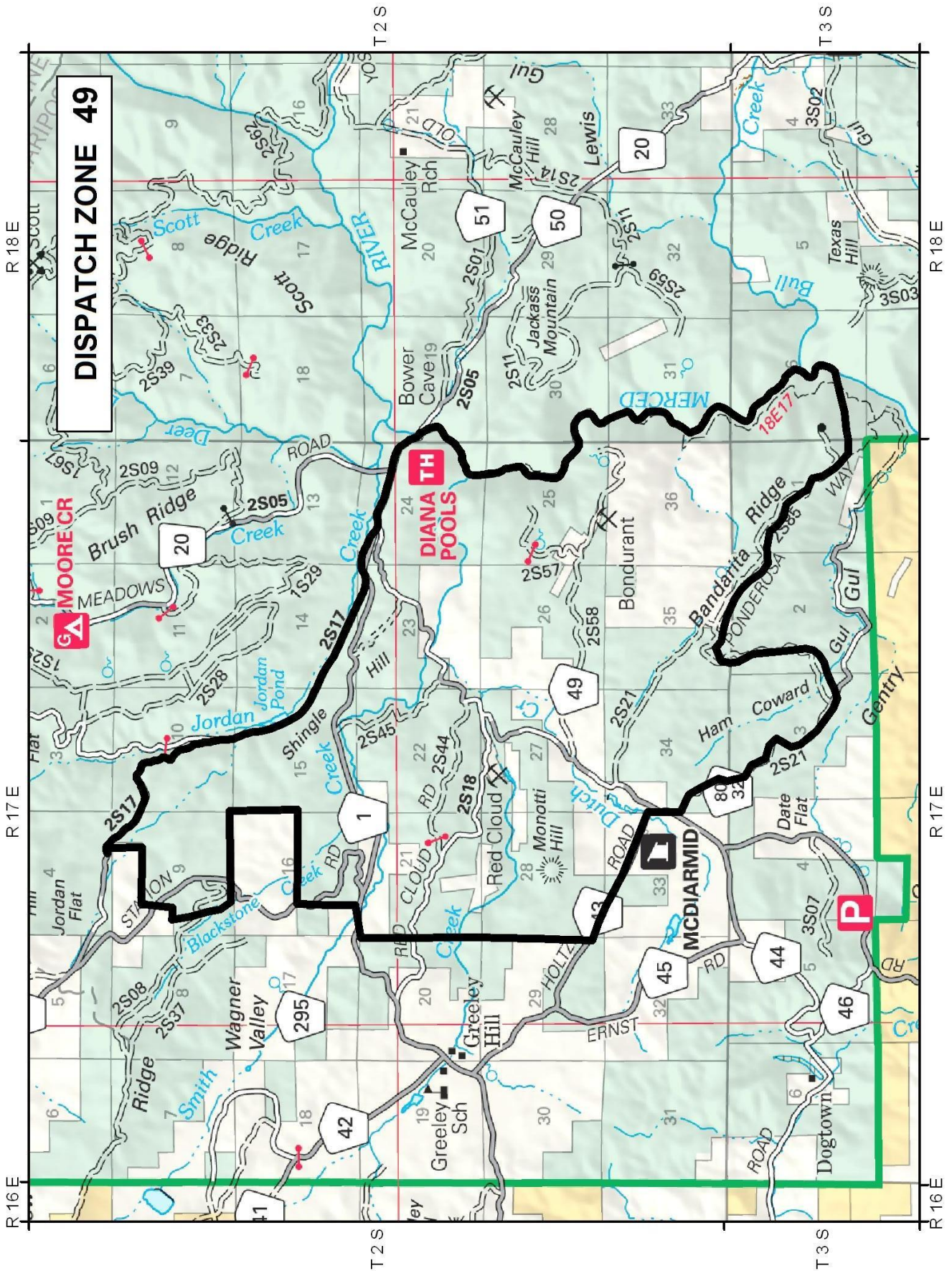


DISPATCH ZONE 48

WILDCAD Run Card
Stanislaus National Forest – Fire Response

AREA - 48 (KINSLEY)

<u>Low Response</u> ENGINES (1): PREVENTION (1): OVERHEAD (1):	<u>Unit</u> E345 PAT43 DIV4
<u>Moderate Response</u> ENGINES (2): AIR ATTACK (1): AIR TANKER (1): LEAD PLANE (1): HELICOPTER (1): CREW (1): OVERHEAD (1): WATERTENDER (1): DOZER (1):	<u>Unit</u> E343, E342 AA440 AT82 LEAD1 HEL551 CRW4 BAT41 WT42 DZ51
<u>High Response</u> ENGINES (3): AIR TANKER (3): HELICOPTER (1): CREW1 (1):	<u>Unit</u> E346, E34291M, E34281M AT83, AT1, AT2 HEL517 CRW41
<u>Notes</u> - DIST.NOTIFY LANDOWNERS ON PRIVATE LAND - POWERLINES-SOUTH END	



DISPATCH ZONE 49

WILDCAD Run Card

Stanislaus National Forest – Fire Response

AREA - 49 (MCDIARMID)

<u>Low Response</u> ENGINES (1): PREVENTION (1): OVERHEAD (1):	<u>Unit</u> E343 PAT43 DIV4
<u>Moderate Response</u> ENGINES (2): AIR ATTACK (1): AIR TANKER (2): LEAD PLANE (1): HELICOPTER (1): CREW (1): OVERHEAD (1): WATERTENDER (1): DOZER (1):	<u>Unit</u> E342, E345 AA440 AT82, AT83 LEAD1 HEL517 CRW4 BAT41 WT42 DZ51
<u>High Response</u> ENGINES (3): AIR TANKER (2): CREW1 (1):	<u>Unit</u> E346, E34291M, E34281M AT1, AT2 CRW41
<u>Notes</u> <ul style="list-style-type: none">- ENGINES FOR STRUCTURE PROTECTION IF NEEDED- DIST.NOTIFY LANDOWNERS ON PRIVATE LAND	

