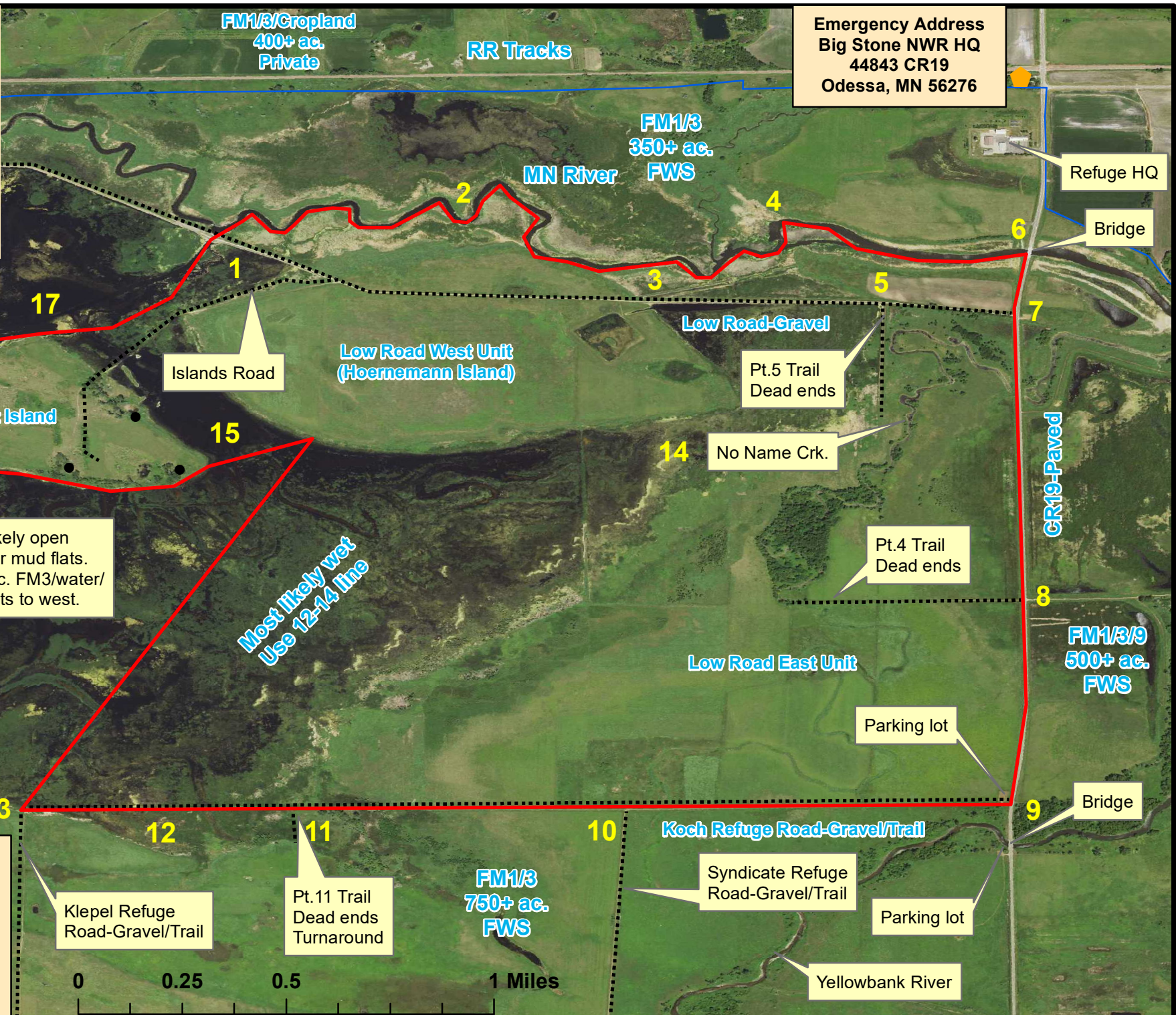


Low Roads Ops. Map

Legend

- Burn Unit
- Roads/Trails
- Eagle Nests
- 🏠 Occupied Home
- Big Stone NWR



Emergency Address
 Big Stone NWR HQ
 44843 CR19
 Odessa, MN 56276

Refuge HQ
 Bridge

FM1/3/9
 250+ ac.
 FWS
 Auto Tour

FM3
 250+ ac.
 FWS

All winds except SW allowed

Sample Ignition w/NW winds

9-6 & 9-13
 13-14 or 15 & 6-2
 15-16-1 & 2-1

LQP Co.
 Agassiz TWP
 T121N R45W S31
 N45°15'16.111"
 45.2544/Air 45 15.2685
 W96°20'25.047"
 -96.3402/Air -96 20.4174
 1120 acres

Most likely open water or mud flats. 500+ ac. FM3/water/mud flats to west.

Most likely wet
 Use 12-14 line

Klepel Refuge Road-Gravel/Trail

Pt.11 Trail Dead ends Turnaround

Pt.5 Trail Dead ends

No Name Crk.

Pt.4 Trail Dead ends

Low Road East Unit

Parking lot

Koch Refuge Road-Gravel/Trail

Syndicate Refuge Road-Gravel/Trail

Parking lot

Yellowbank River

