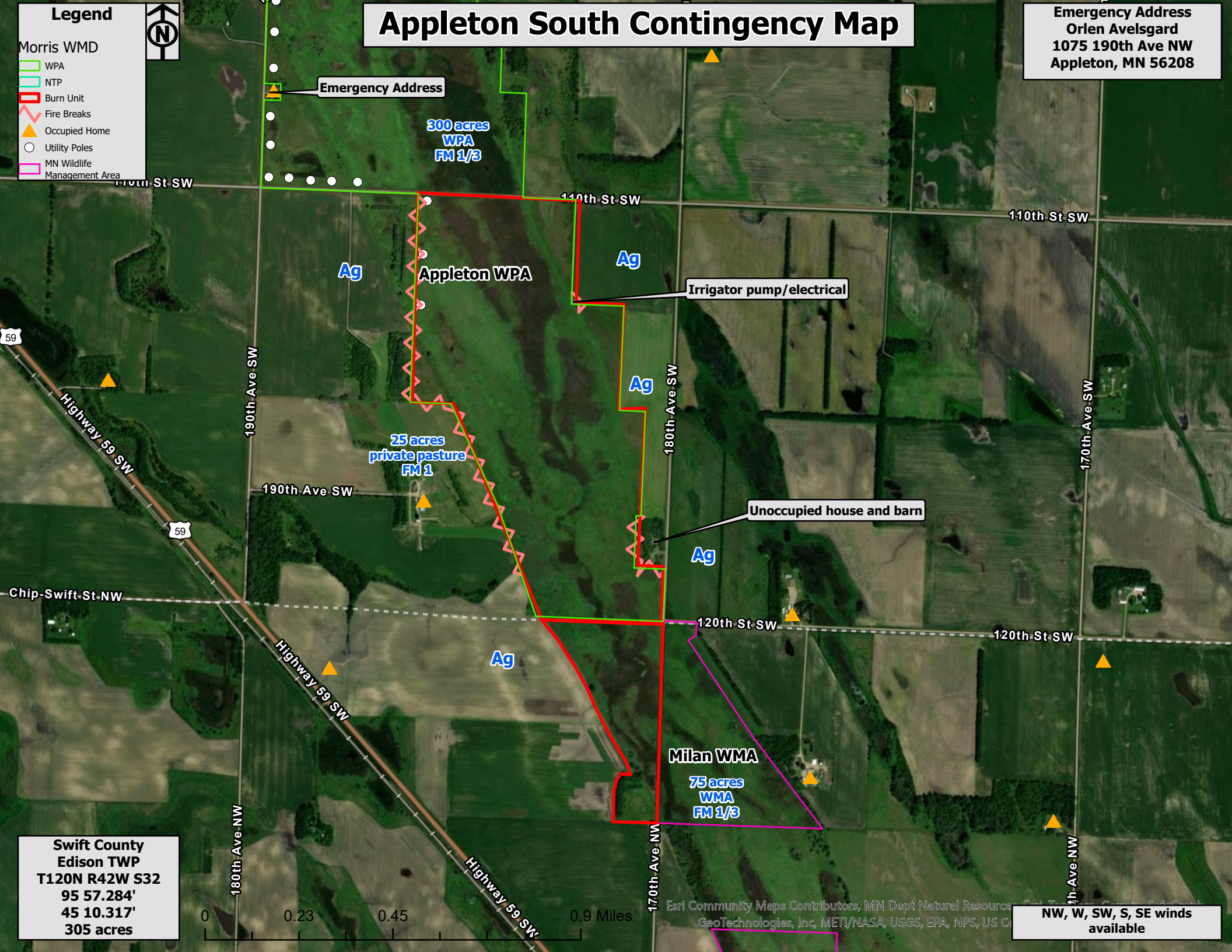


# Appleton South Contingency Map

**Emergency Address**  
 Orlen Avelsgard  
 1075 190th Ave NW  
 Appleton, MN 56208

## Legend

- Morris WMD
- WPA
- NTP
- Burn Unit
- Fire Breaks
- Occupied Home
- Utility Poles
- MN Wildlife Management Area



**Emergency Address**

300 acres  
 WPA  
 FM 1/3

Ag

Appleton WPA

Ag

Irrigator pump/electrical

25 acres  
 private pasture  
 FM 1

Unoccupied house and barn

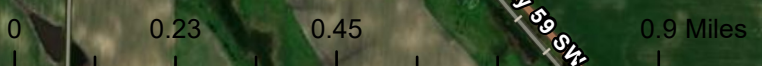
Ag

Ag

Milan WMA

75 acres  
 WMA  
 FM 1/3

Swift County  
 Edison TWP  
 T120N R42W S32  
 95 57.284'  
 45 10.317'  
 305 acres



Esri Community Maps Contributors, MN Dept Natural Resources, GeoTechnologies, Inc, METI/NASA, USGS, EPA, NPS, US Ca

NW, W, SW, S, SE winds available