

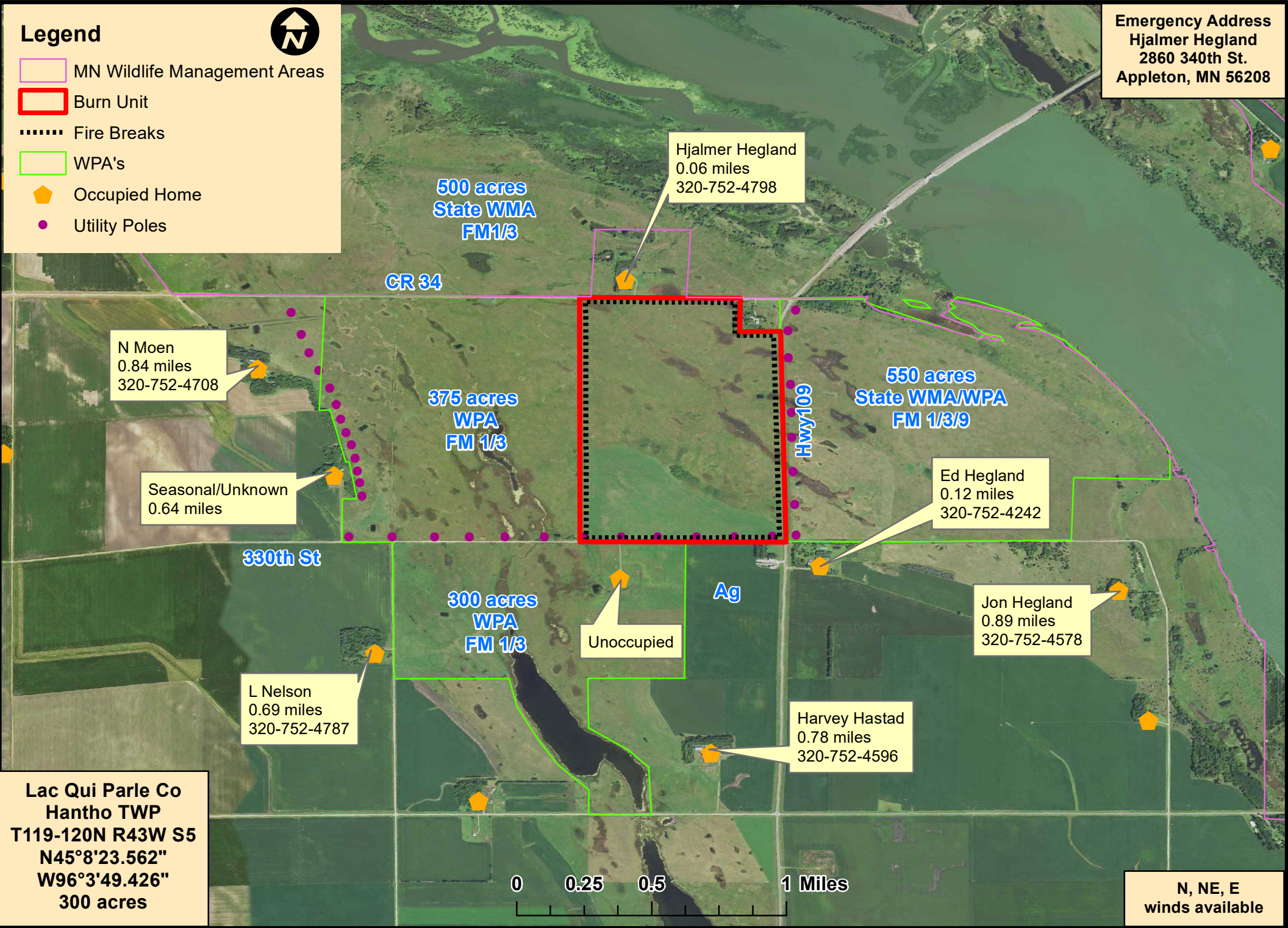
# Hastad East Cont Map

## Legend

- MN Wildlife Management Areas
- Burn Unit
- Fire Breaks
- WPA's
- ▶ Occupied Home
- Utility Poles



**Emergency Address**  
 Hjalmer Hegland  
 2860 340th St.  
 Appleton, MN 56208



**Lac Qui Parle Co**  
**Hantho TWP**  
**T119-120N R43W S5**  
**N45°8'23.562"**  
**W96°3'49.426"**  
**300 acres**

0 0.25 0.5 1 Miles

**N, NE, E**  
**winds available**