


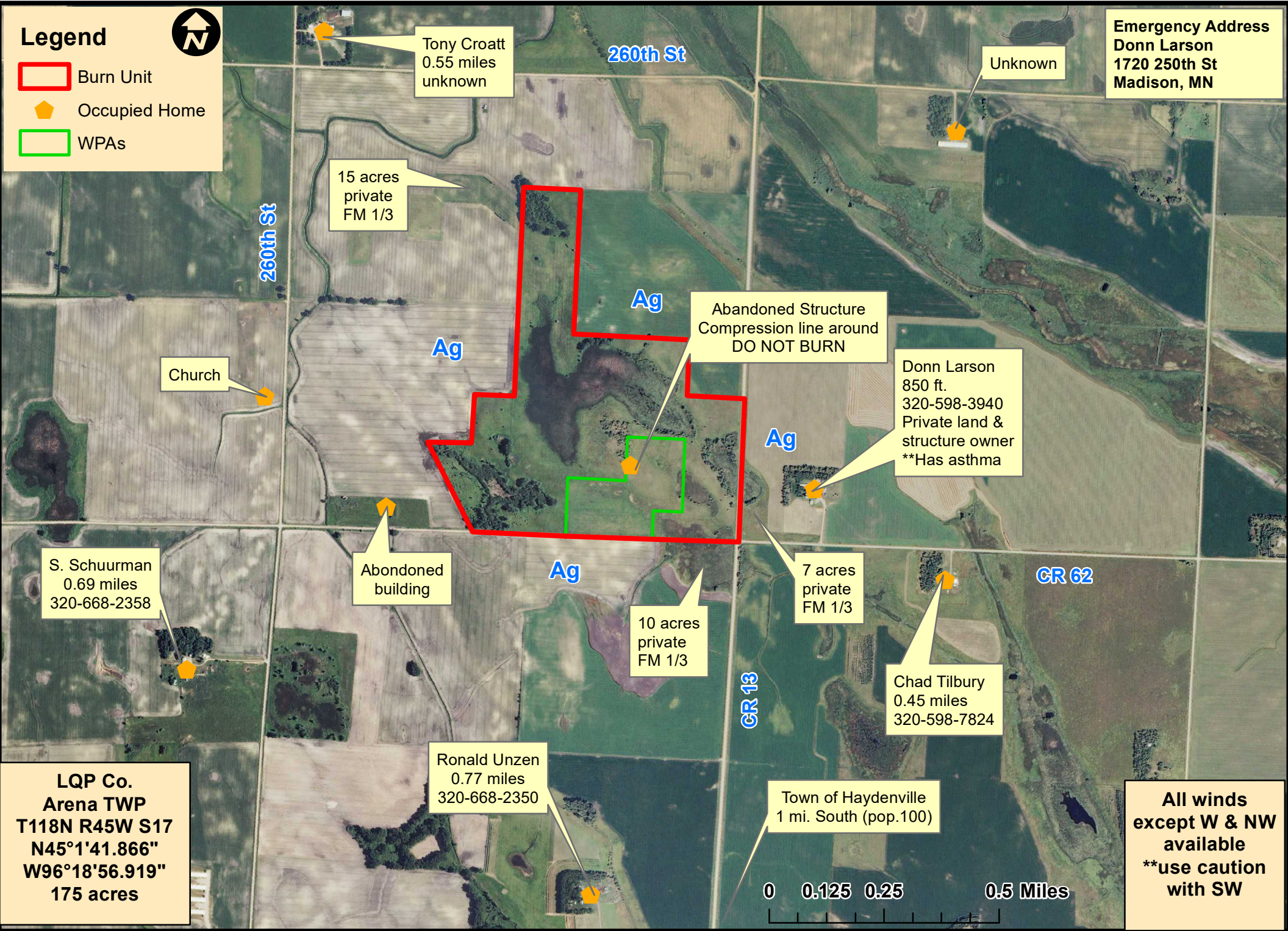


# Larson Cont Map

## Legend

-  Burn Unit
-  Occupied Home
-  WPAs



Tony Croatt  
0.55 miles  
unknown

Unknown

Emergency Address  
Donn Larson  
1720 250th St  
Madison, MN

15 acres  
private  
FM 1/3

Abandoned Structure  
Compression line around  
DO NOT BURN

Donn Larson  
850 ft.  
320-598-3940  
Private land &  
structure owner  
\*\*Has asthma

Church

S. Schuurman  
0.69 miles  
320-668-2358

Abandoned  
building

10 acres  
private  
FM 1/3

7 acres  
private  
FM 1/3

Chad Tilbury  
0.45 miles  
320-598-7824

LQP Co.  
Arena TWP  
T118N R45W S17  
N45°1'41.866"  
W96°18'56.919"  
175 acres

Ronald Unzen  
0.77 miles  
320-668-2350

Town of Haydenville  
1 mi. South (pop.100)

All winds  
except W & NW  
available  
\*\*use caution  
with SW

0 0.125 0.25 0.5 Miles