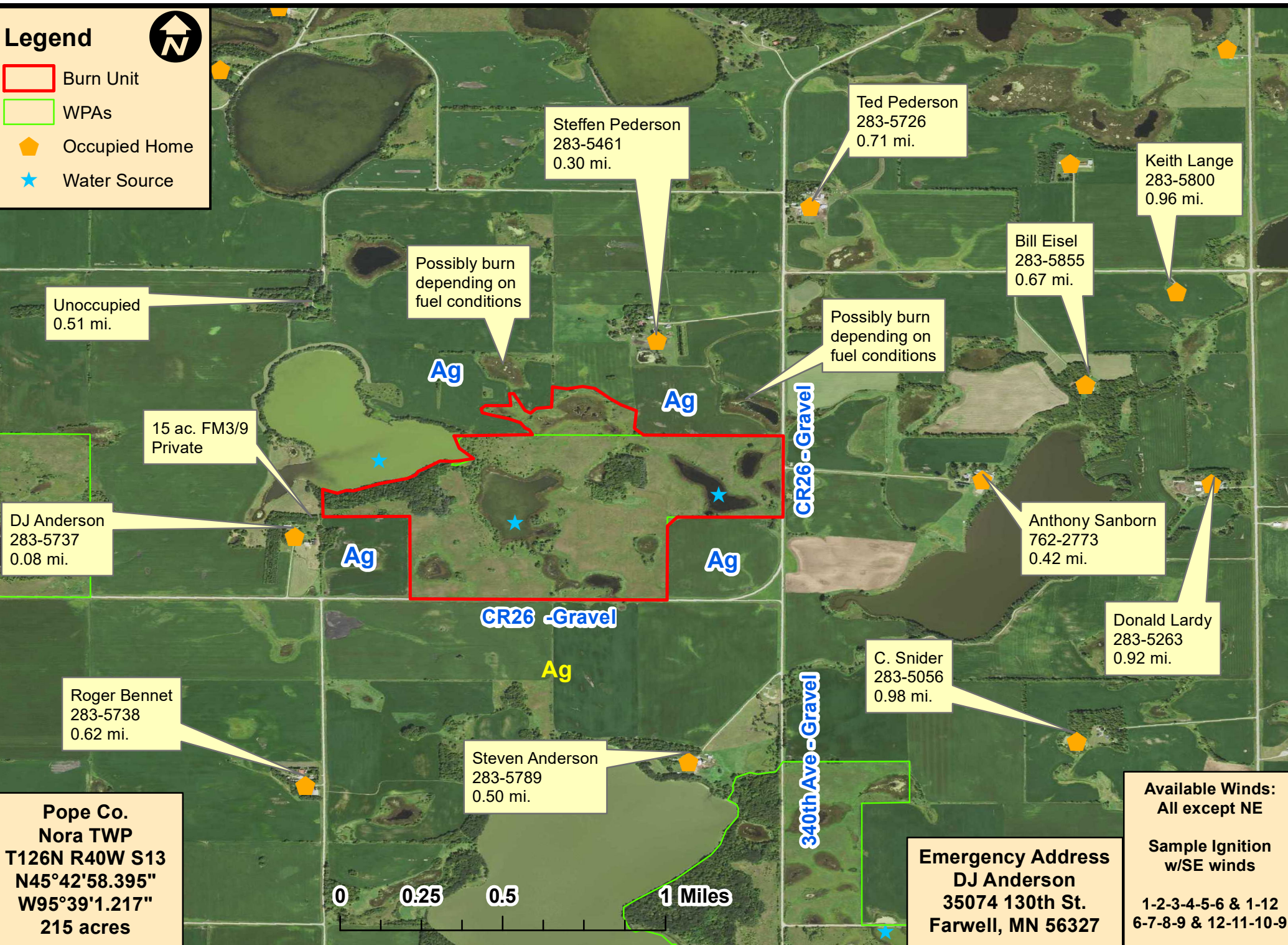


# Rosby Lake Cont. Map

## Legend



- Burn Unit
- WPAs
- ◆ Occupied Home
- ★ Water Source



Steffen Pederson  
283-5461  
0.30 mi.

Ted Pederson  
283-5726  
0.71 mi.

Keith Lange  
283-5800  
0.96 mi.

Bill Eisel  
283-5855  
0.67 mi.

Unoccupied  
0.51 mi.

Possibly burn  
depending on  
fuel conditions

Possibly burn  
depending on  
fuel conditions

15 ac. FM3/9  
Private

DJ Anderson  
283-5737  
0.08 mi.

Anthony Sanborn  
762-2773  
0.42 mi.

Donald Lardy  
283-5263  
0.92 mi.

Roger Bennet  
283-5738  
0.62 mi.

Steven Anderson  
283-5789  
0.50 mi.

C. Snider  
283-5056  
0.98 mi.

**Pope Co.  
Nora TWP  
T126N R40W S13  
N45°42'58.395"  
W95°39'1.217"  
215 acres**

0 0.25 0.5 1 Miles

**Emergency Address  
DJ Anderson  
35074 130th St.  
Farwell, MN 56327**

**Available Winds:  
All except NE**

**Sample Ignition  
w/SE winds**

1-2-3-4-5-6 & 1-12  
6-7-8-9 & 12-11-10-9