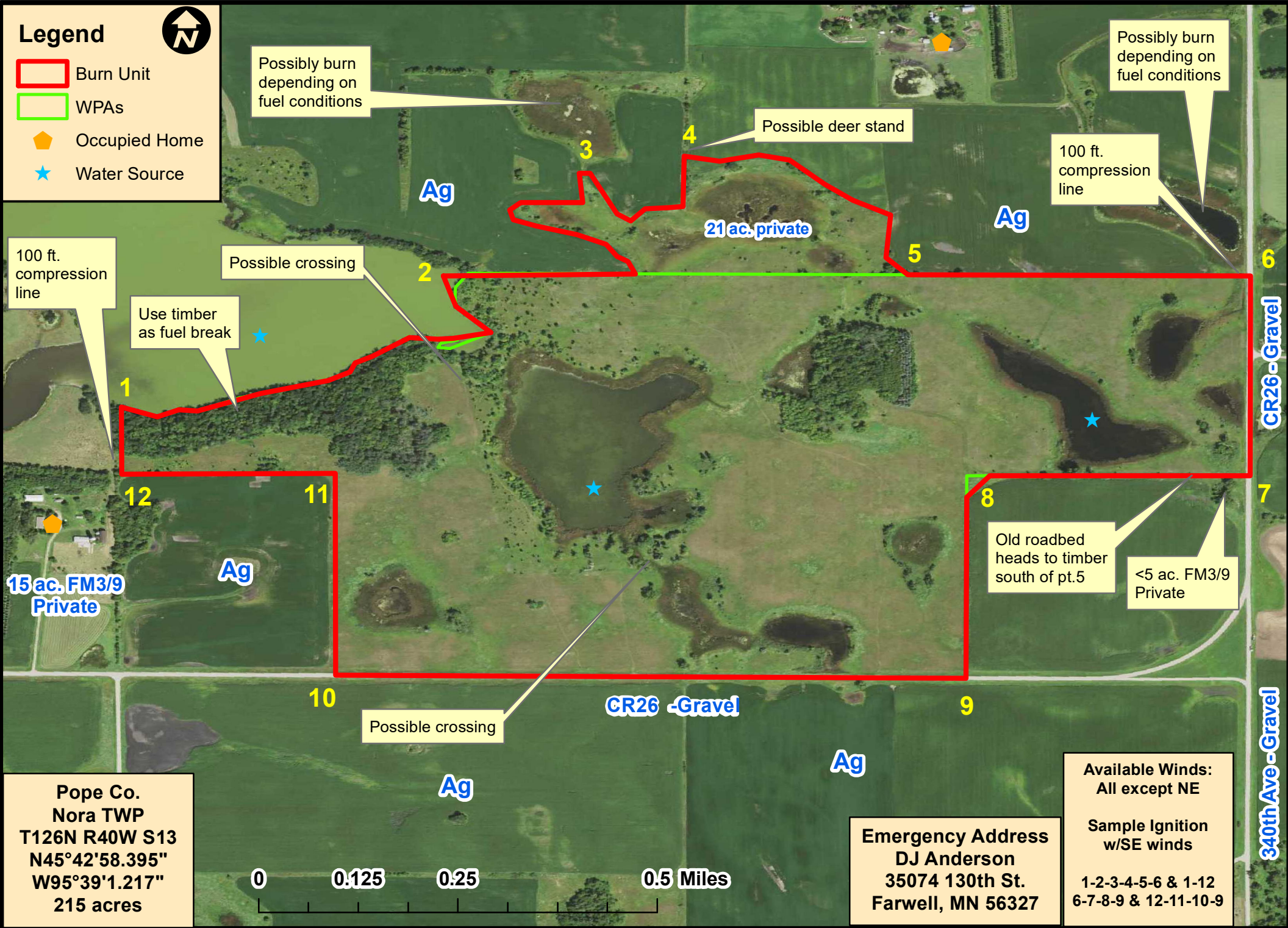


Rosby Lake Ops. Map

Legend



- Burn Unit
- WPAs
- ◆ Occupied Home
- ★ Water Source



Possibly burn depending on fuel conditions

Possible deer stand

Possibly burn depending on fuel conditions

100 ft. compression line

21 ac. private

100 ft. compression line

Possible crossing

Use timber as fuel break

15 ac. FM3/9 Private

Old roadbed heads to timber south of pt.5

<5 ac. FM3/9 Private

Possible crossing

Pope Co.
Nora TWP
T126N R40W S13
N45°42'58.395"
W95°39'1.217"
215 acres

0 0.125 0.25 0.5 Miles

Emergency Address
DJ Anderson
35074 130th St.
Farwell, MN 56327

Available Winds:
All except NE

Sample Ignition
w/SE winds

1-2-3-4-5-6 & 1-12
6-7-8-9 & 12-11-10-9

CR26 -Gravel

340th Ave -Gravel