

# Legend

- Parking\_Lot
- Residence
- Control Line
- Burn Unit

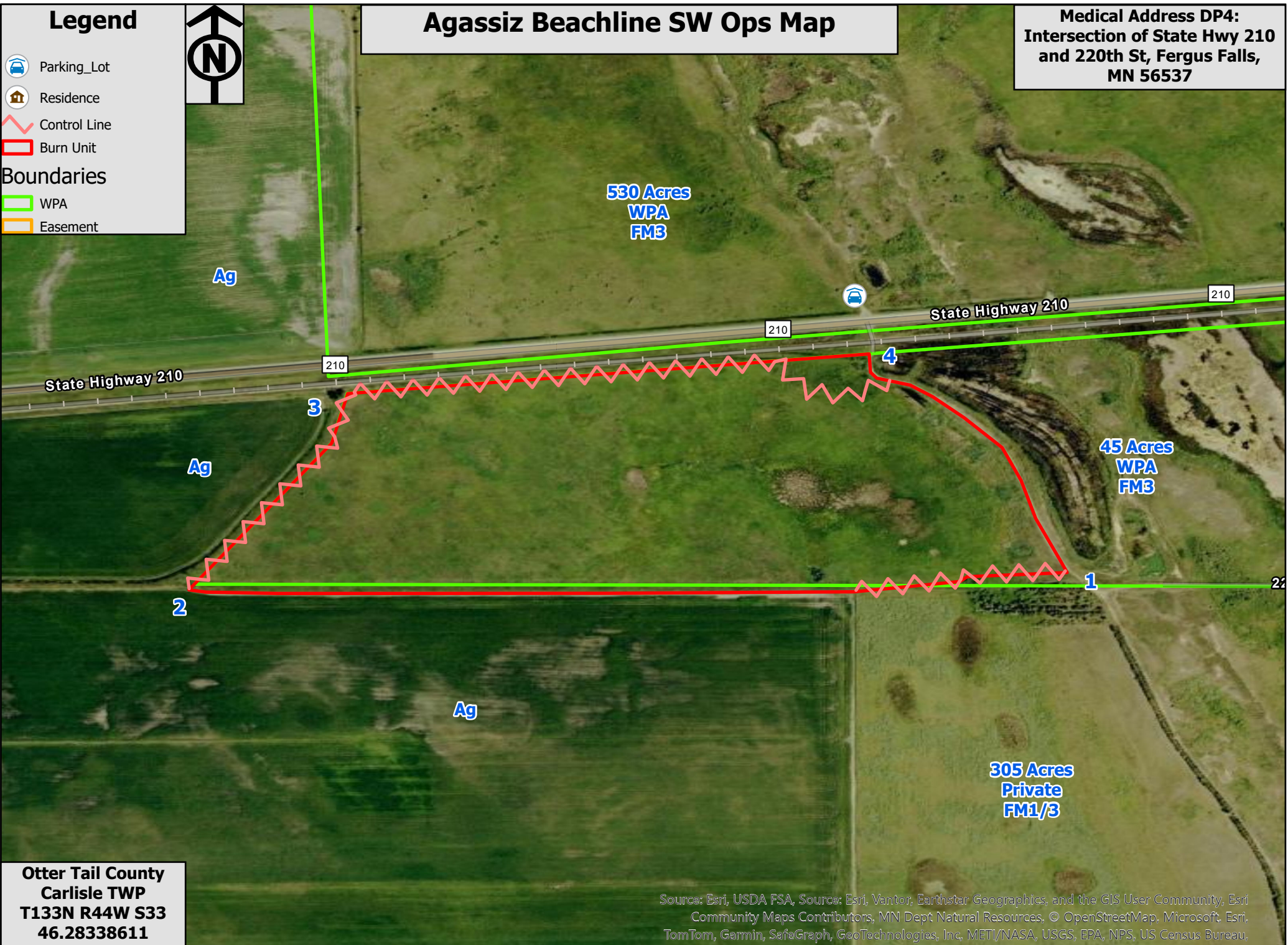
## Boundaries

- WPA
- Easement



# Agassiz Beachline SW Ops Map

**Medical Address DP4:**  
 Intersection of State Hwy 210  
 and 220th St, Fergus Falls,  
 MN 56537



**Otter Tail County**  
**Carlisle TWP**  
**T133N R44W S33**  
**46.28338611**  
**96.25576008**  
**51 Acres**

Source: Esri, USDA FSA, Source: Esri, Vantor, Earthstar Geographics, and the GIS User Community, Esri Community Maps Contributors, MN Dept Natural Resources, © OpenStreetMap, Microsoft, Esri, TomTom, Garmin, SafeGraph, GeoTechnologies, Inc, METI/NASA, USGS, EPA, NPS, US Census Bureau, USDA, NREWS

0 0.1 0.21 0.42 Miles

**All North Winds Available**