

Legend

- Residence
- Control Line
- Burn Unit

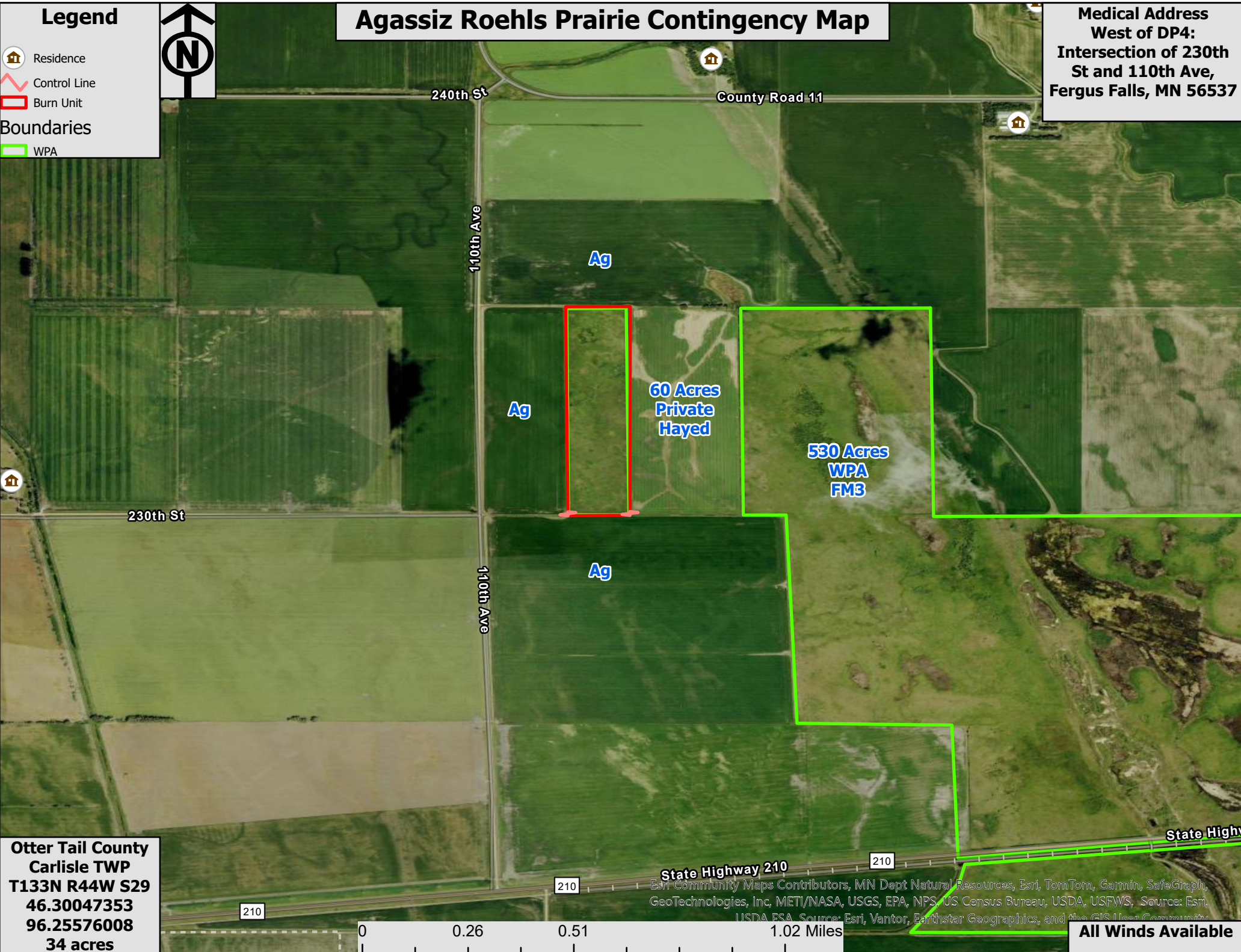
Boundaries

- WPA

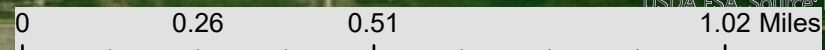


Agassiz Roehls Prairie Contingency Map

Medical Address
West of DP4:
Intersection of 230th
St and 110th Ave,
Fergus Falls, MN 56537



Otter Tail County
Carlisle TWP
T133N R44W S29
46.30047353
96.25576008
34 acres



State Highway 210
Esri Community Maps Contributors, MN Dept Natural Resources, Esri, TomTom, Garmin, SafeGraph, GeoTechnologies, Inc, METI/NASA, USGS, EPA, NPS, US Census Bureau, USDA, USFWS, Source: Esri, USDA ESA, Source: Esri, Vantor, Earthstar Geographics, and the GIS User Community

All Winds Available