

Agassiz Roehls Prairie Ops Map

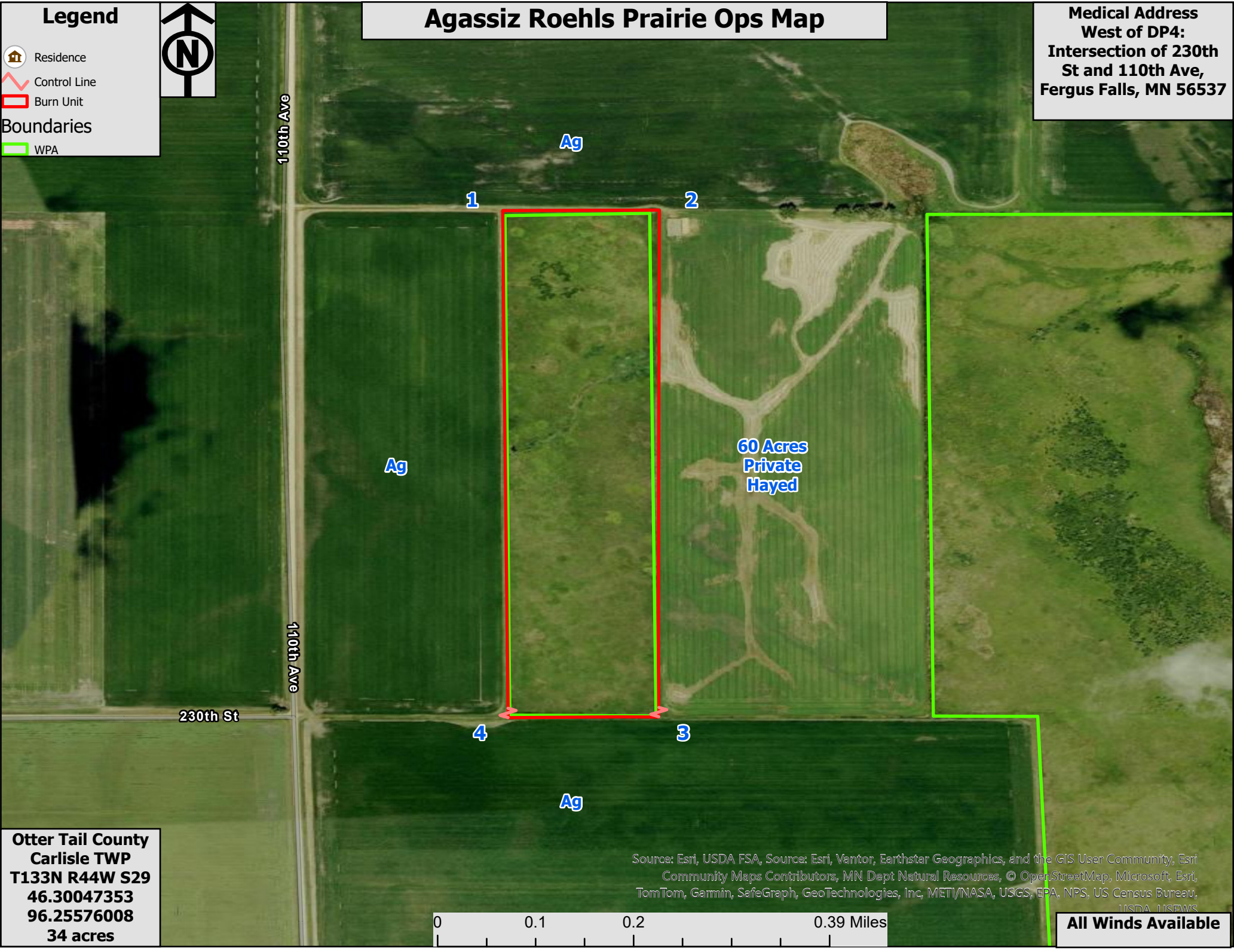
Medical Address
West of DP4:
Intersection of 230th
St and 110th Ave,
Fergus Falls, MN 56537

Legend

- Residence
- Control Line
- Burn Unit

Boundaries

- WPA



110th Ave

110th Ave

230th St

Ag

1

2

Ag

60 Acres
Private
Hayed

4

3

Ag

Otter Tail County
Carlisle TWP
T133N R44W S29
46.30047353
96.25576008
34 acres

Source: Esri, USDA FSA, Source: Esri, Vantor, Earthstar Geographics, and the GIS User Community, Esri
Community Maps Contributors, MN Dept Natural Resources, © OpenStreetMap, Microsoft, Esri,
TomTom, Garmin, SafeGraph, GeoTechnologies, Inc, METI/NASA, USGS, EPA, NPS, US Census Bureau,
USDA, NREWS

0 0.1 0.2 0.39 Miles

All Winds Available