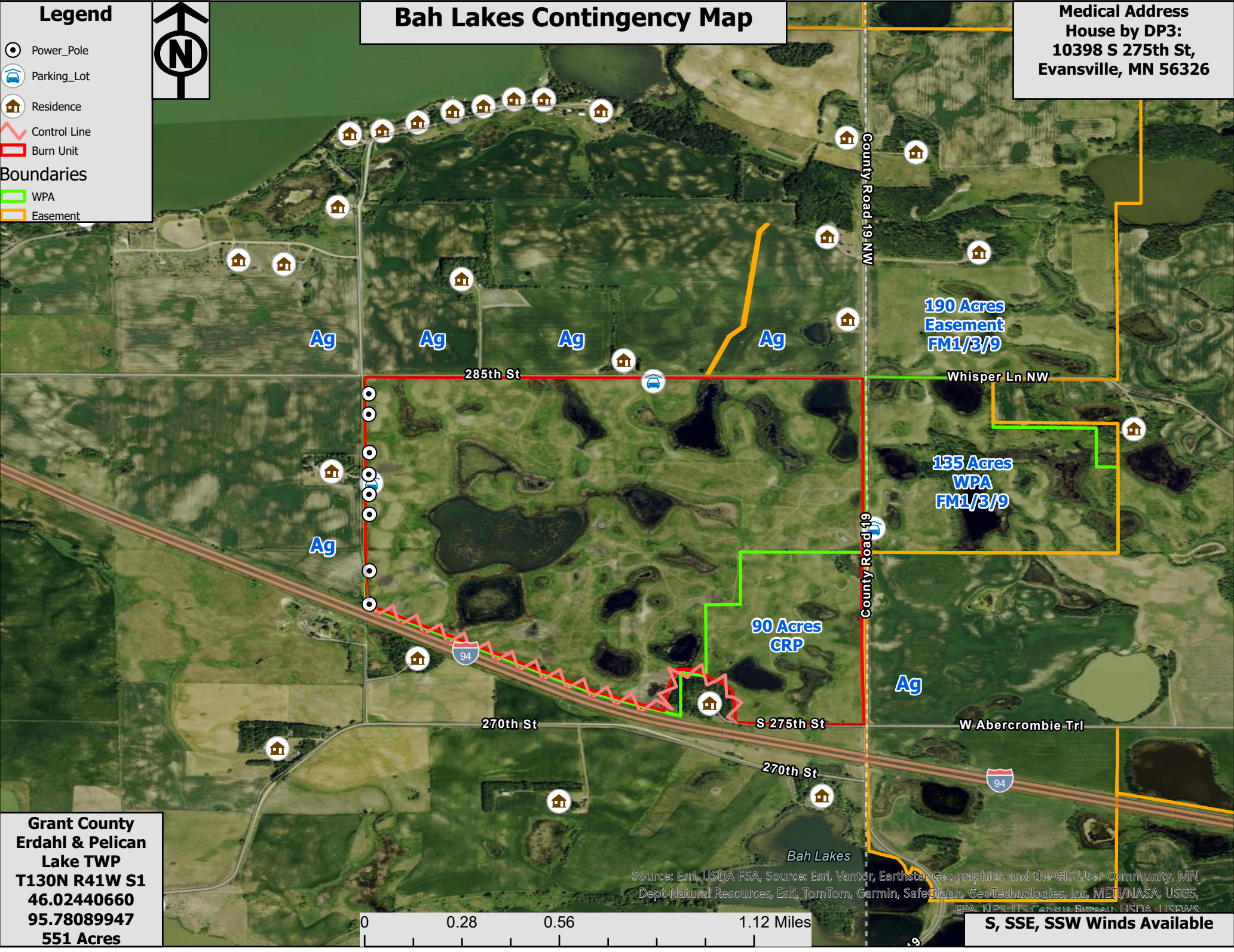


# Bah Lakes Contingency Map

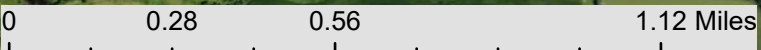
Medical Address  
House by DP3:  
10398 S 275th St,  
Evansville, MN 56326

- ### Legend
- Power\_Pole
  - Parking\_Lot
  - Residence
  - Control Line
  - Burn Unit
- ### Boundaries
- WPA
  - Easement



**Grant County**  
**Erdahl & Pelican**  
**Lake TWP**  
**T130N R41W S1**  
**46.02440660**  
**95.78089947**  
**551 Acres**

Source: Esri, USDA FSA, Source: Esri, Vantor, Earthstar Geographics, and the GIS User Community, MN  
Dept Natural Resources, Esri, TomTom, Garmin, SafeGraph, GeoTechnologies, Inc, METI/NASA, USGS,  
EPA, NPS, IIS, Conserve, Bismar, USDA, USEWS



**S, SSE, SSW Winds Available**