

Bah Lakes Ops Map

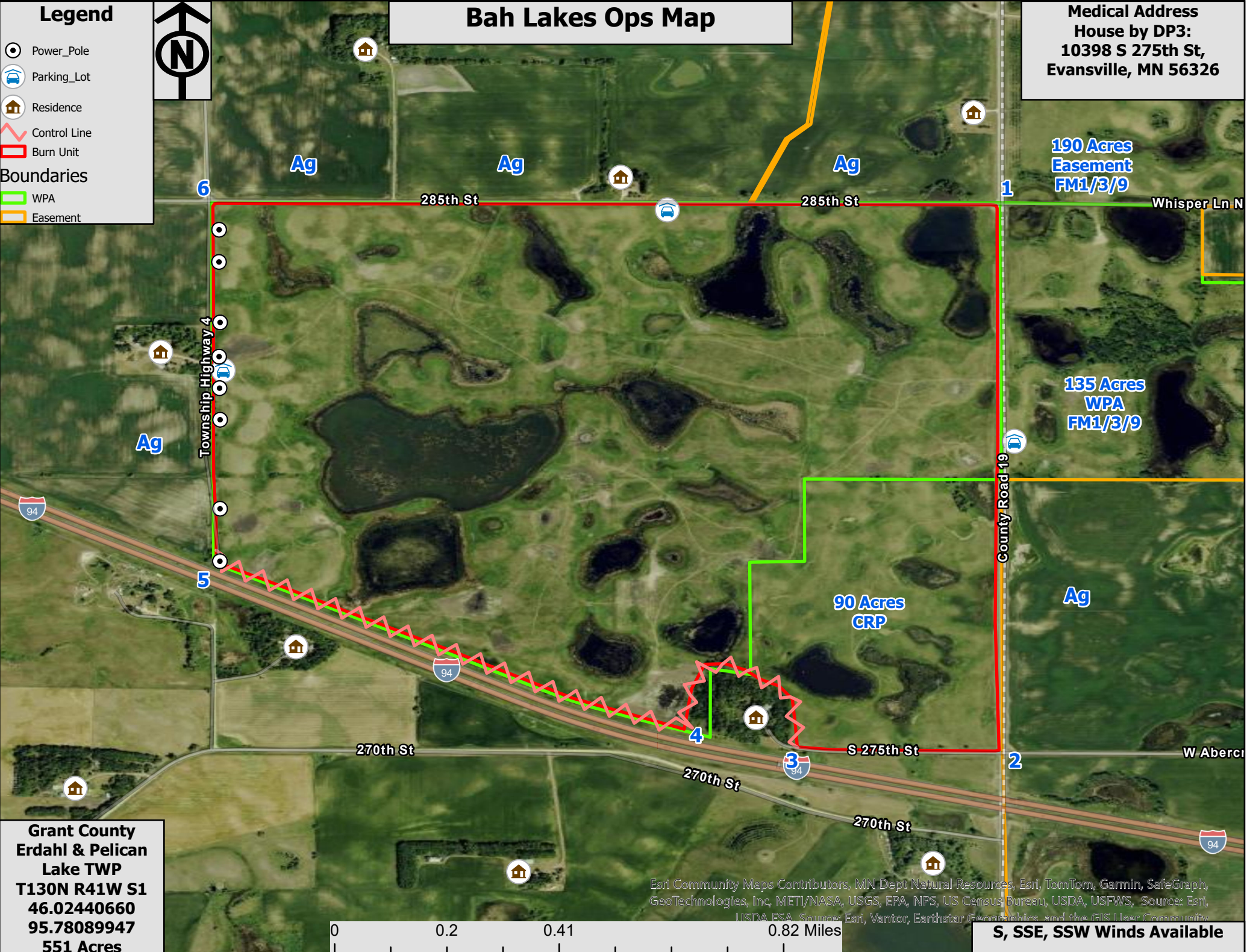
Medical Address
House by DP3:
10398 S 275th St,
Evansville, MN 56326

Legend

- Power_Pole
- Parking_Lot
- Residence
- Control Line
- Burn Unit

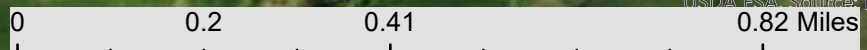
Boundaries

- WPA
- Easement



Grant County
Erdahl & Pelican
Lake TWP
T130N R41W S1
46.02440660
95.78089947
551 Acres

Esri Community Maps Contributors, MN Dept Natural Resources, Esri, TomTom, Garmin, SafeGraph, GeoTechnologies, Inc, METI/NASA, USGS, EPA, NPS, US Census Bureau, USDA, USFWS, Source: Esri, USDA ESA, Source: Esri, Vantor, Earthstar Geographics, and the GIS User Community



S, SSE, SSW Winds Available