

# Bengston Contingency Map

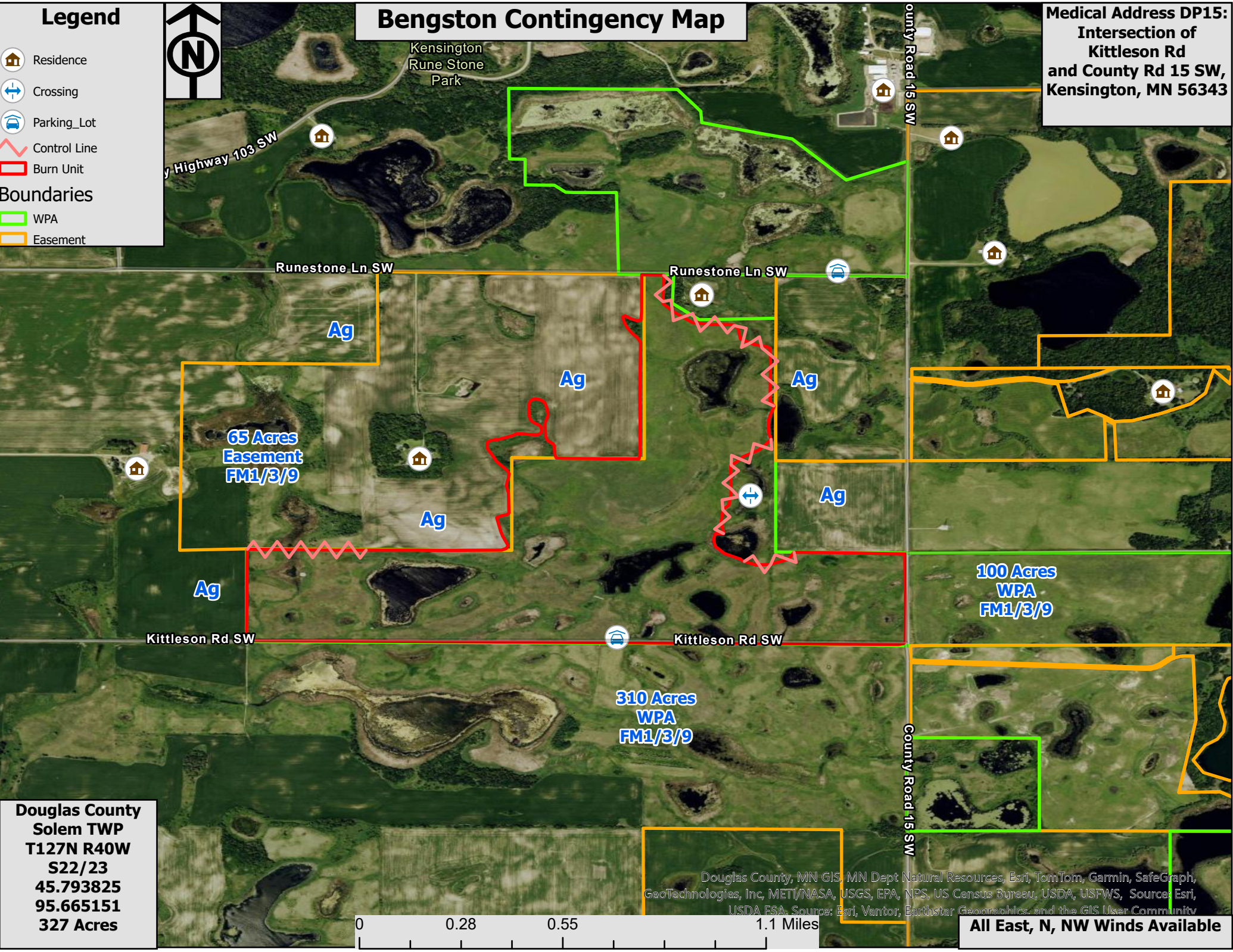
Medical Address DP15:  
Intersection of  
Kittleson Rd  
and County Rd 15 SW,  
Kensington, MN 56343

**Legend**

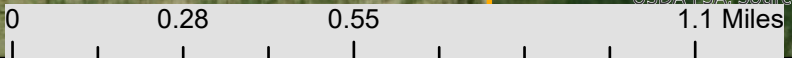
- Residence
- Crossing
- Parking\_Lot
- Control Line
- Burn Unit

**Boundaries**

- WPA
- Easement



**Douglas County  
Solem TWP  
T127N R40W  
S22/23  
45.793825  
95.665151  
327 Acres**



Douglas County, MN GIS, MN Dept Natural Resources, Esri, TomTom, Garmin, SafeGraph, GeoTechnologies, Inc, METI/NASA, USGS, EPA, NPS, US Census Bureau, USDA, USFWS, Source: Esri, USDA FSA. Source: Esri, Vantor, Earthstar Geographics, and the GIS User Community

**All East, N, NW Winds Available**