

Bengston Ops Map

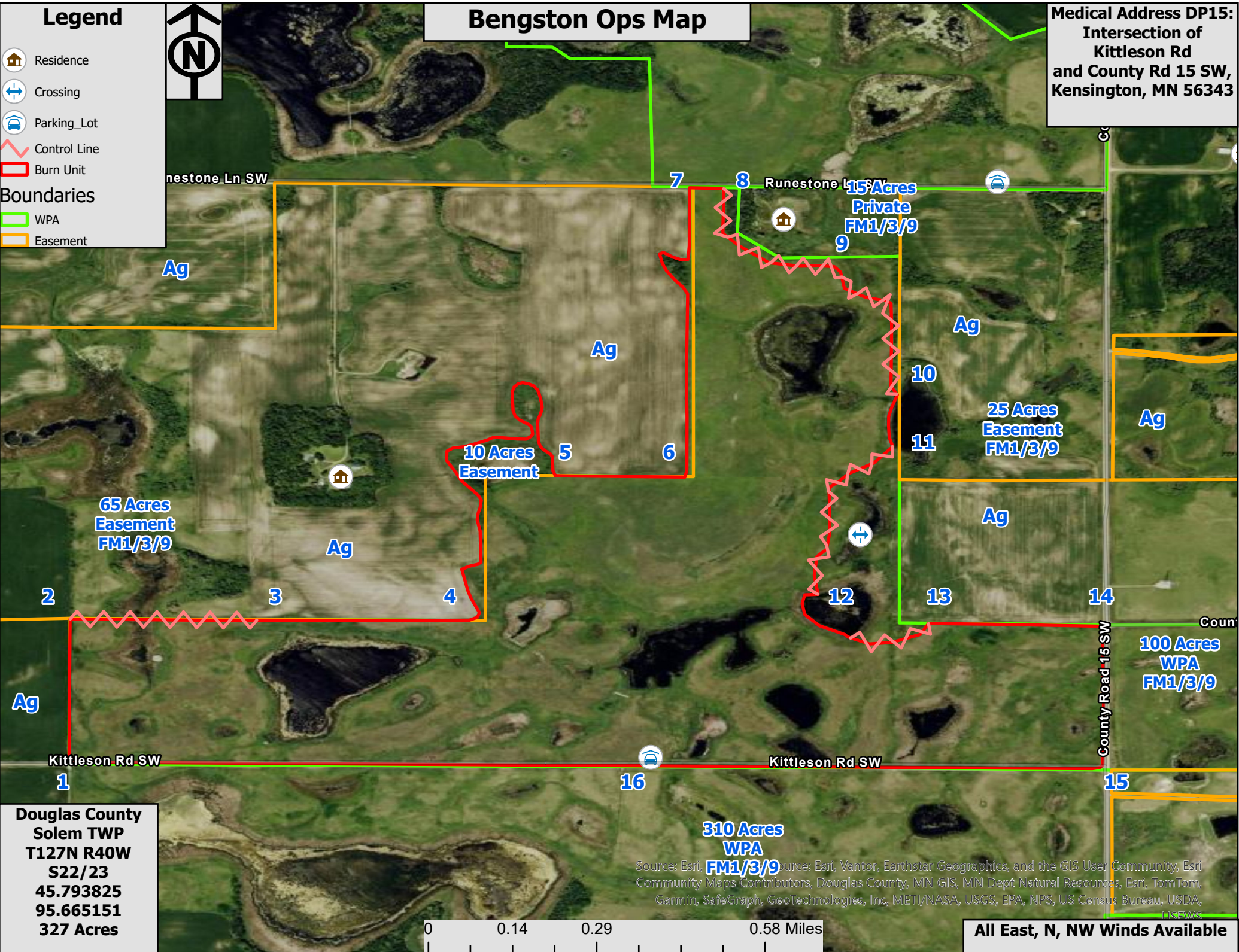
Medical Address DP15:
Intersection of
Kittleson Rd
and County Rd 15 SW,
Kensington, MN 56343

Legend

- Residence
- Crossing
- Parking_Lot
- Control Line
- Burn Unit

Boundaries

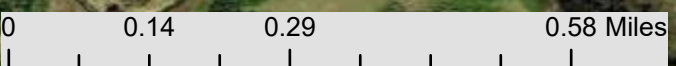
- WPA
- Easement



**Douglas County
Solem TWP
T127N R40W
S22/23
45.793825
95.665151
327 Acres**

**310 Acres
WPA
FM1/3/9**

Source: Esri, Vantor, Earthstar Geographics, and the GIS User Community, Esri Community Maps Contributors, Douglas County, MN GIS, MN Dept Natural Resources, Esri, TomTom, Garmin, SafeGraph, GeoTechnologies, Inc, METI/NASA, USGS, EPA, NPS, US Census Bureau, USDA, USEPA



All East, N, NW Winds Available