

Brown N Contingency Map

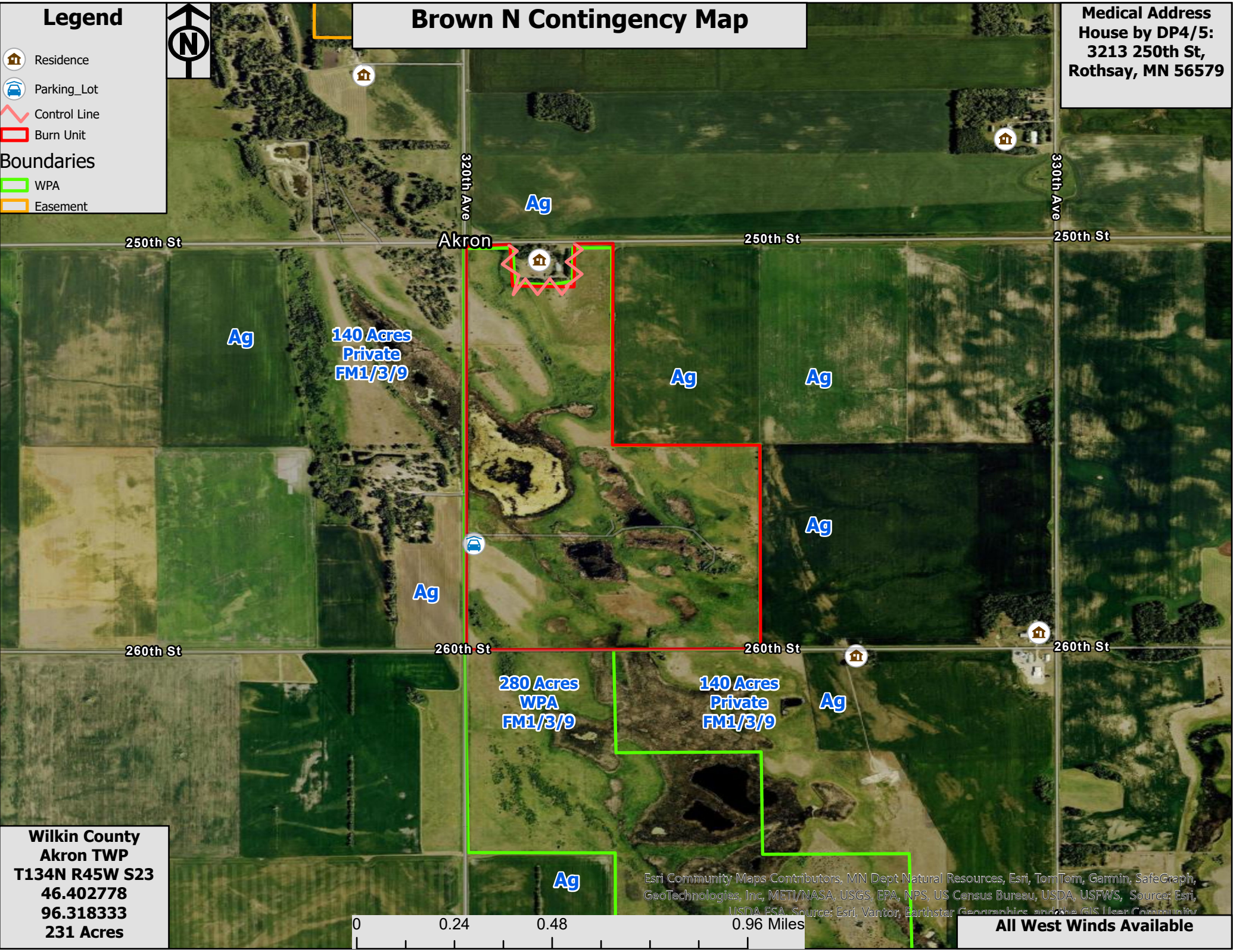
Medical Address
House by DP4/5:
3213 250th St,
Rothsay, MN 56579

Legend

- Residence
- Parking_Lot
- Control Line
- Burn Unit

Boundaries

- WPA
- Easement



Wilkin County
Akron TWP
T134N R45W S23
46.402778
96.318333
231 Acres



Esri Community Maps Contributors, MN Dept Natural Resources, Esri, TomTom, Garmin, SafeGraph, GeoTechnologies, Inc, METI/NASA, USGS, EPA, NPS, US Census Bureau, USDA, USFWS, Source: Esri, USDA ESA, Source: Esri, Vantor, Earthstar Geographics, and the GIS User Community

All West Winds Available