

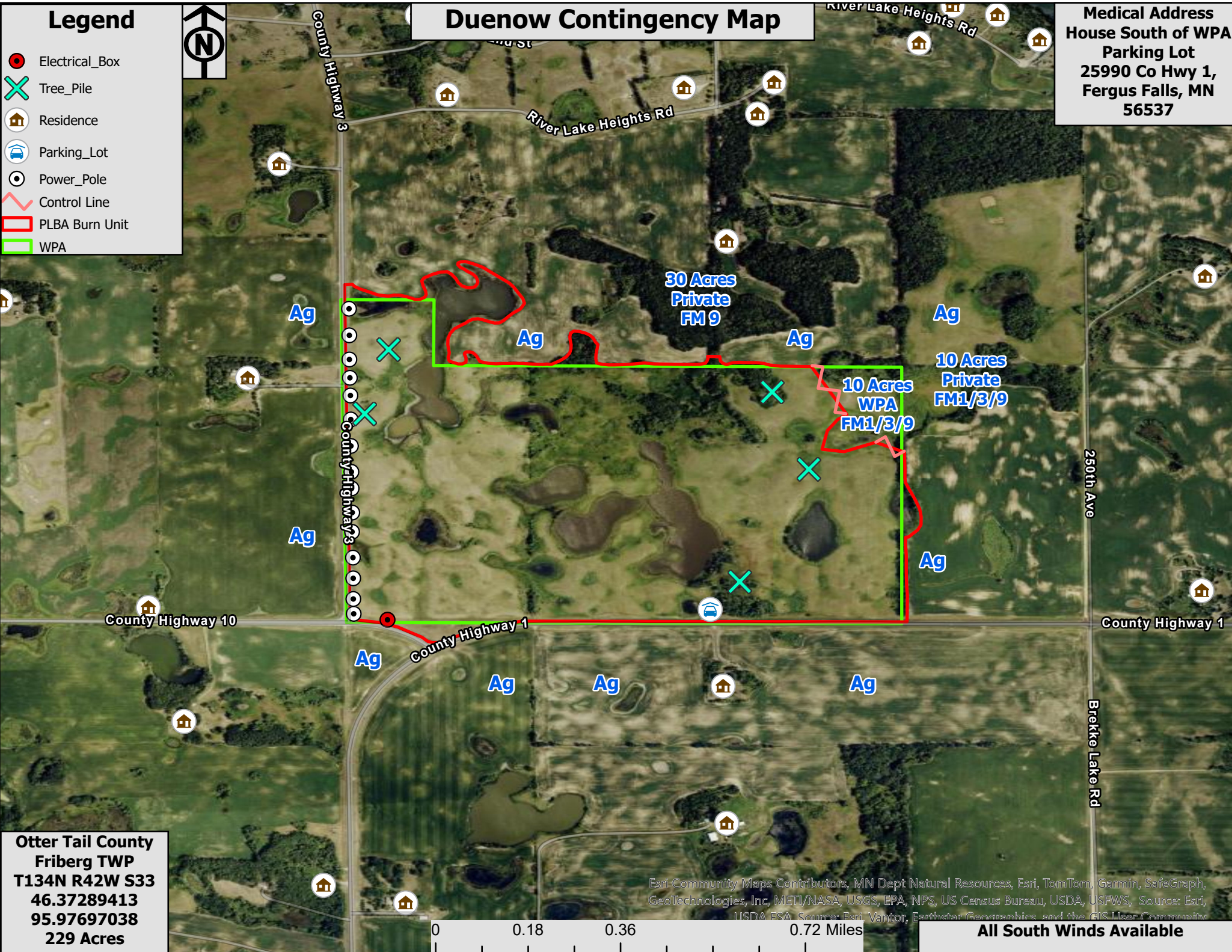
Legend

- Electrical_Box
- Tree_Pile
- Residence
- Parking_Lot
- Power_Pole
- Control_Line
- PLBA Burn Unit
- WPA

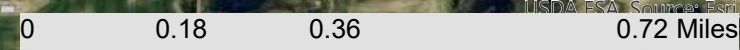


Duenow Contingency Map

Medical Address
House South of WPA
Parking Lot
25990 Co Hwy 1,
Fergus Falls, MN
56537



Otter Tail County
Friberg TWP
T134N R42W S33
46.37289413
95.97697038
229 Acres



All South Winds Available

Esri, Community Maps Contributors, MN Dept Natural Resources, Esri, TomTom, Garmin, SafeGraph, GeoTechnologies, Inc, METI/NASA, USGS, EPA, NPS, US Census Bureau, USDA, USFWS, Source: Esri, USDA ESA, Source: Esri, Vantor, Earthstar Geographics, and the GIS User Community