

Fedje Contingency Map

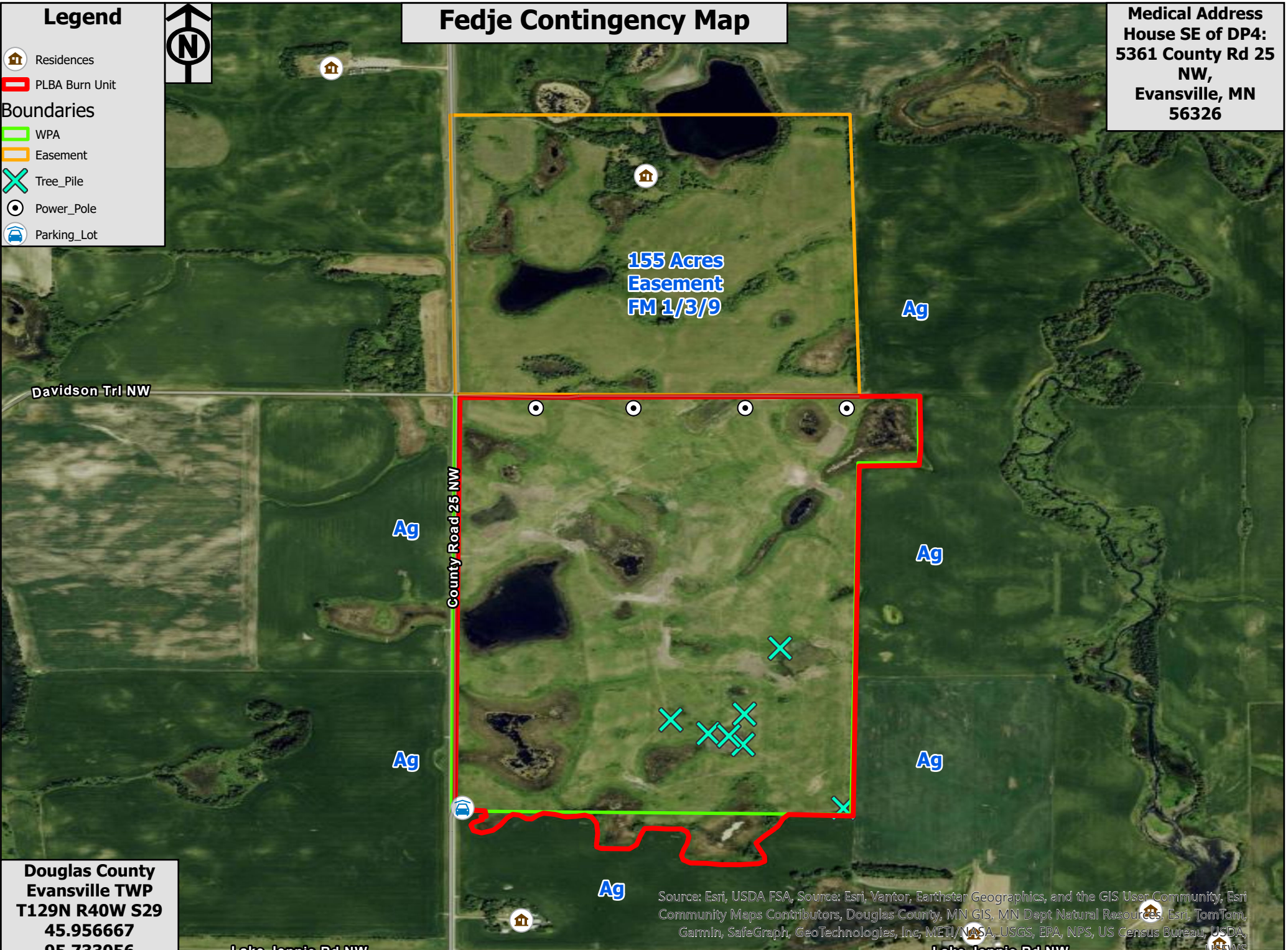
Medical Address
House SE of DP4:
5361 County Rd 25
NW,
Evansville, MN
56326

Legend

- Residences
- PLBA Burn Unit

Boundaries

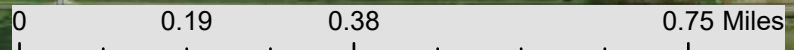
- WPA
- Easement
- Tree_Pile
- Power_Pole
- Parking_Lot



155 Acres
Easement
FM 1/3/9

Douglas County
Evansville TWP
T129N R40W S29
45.956667
95.733056
256 Acres

Source: Esri, USDA FSA, Source: Esri, Vantor, Earthstar Geographics, and the GIS User Community, Esri Community Maps Contributors, Douglas County, MN GIS, MN Dept Natural Resources, Esri, TomTom, Garmin, SafeGraph, GeoTechnologies, Inc, METI/NASA, USGS, EPA, NPS, US Census Bureau, USDA, NREWS



All West Winds Available