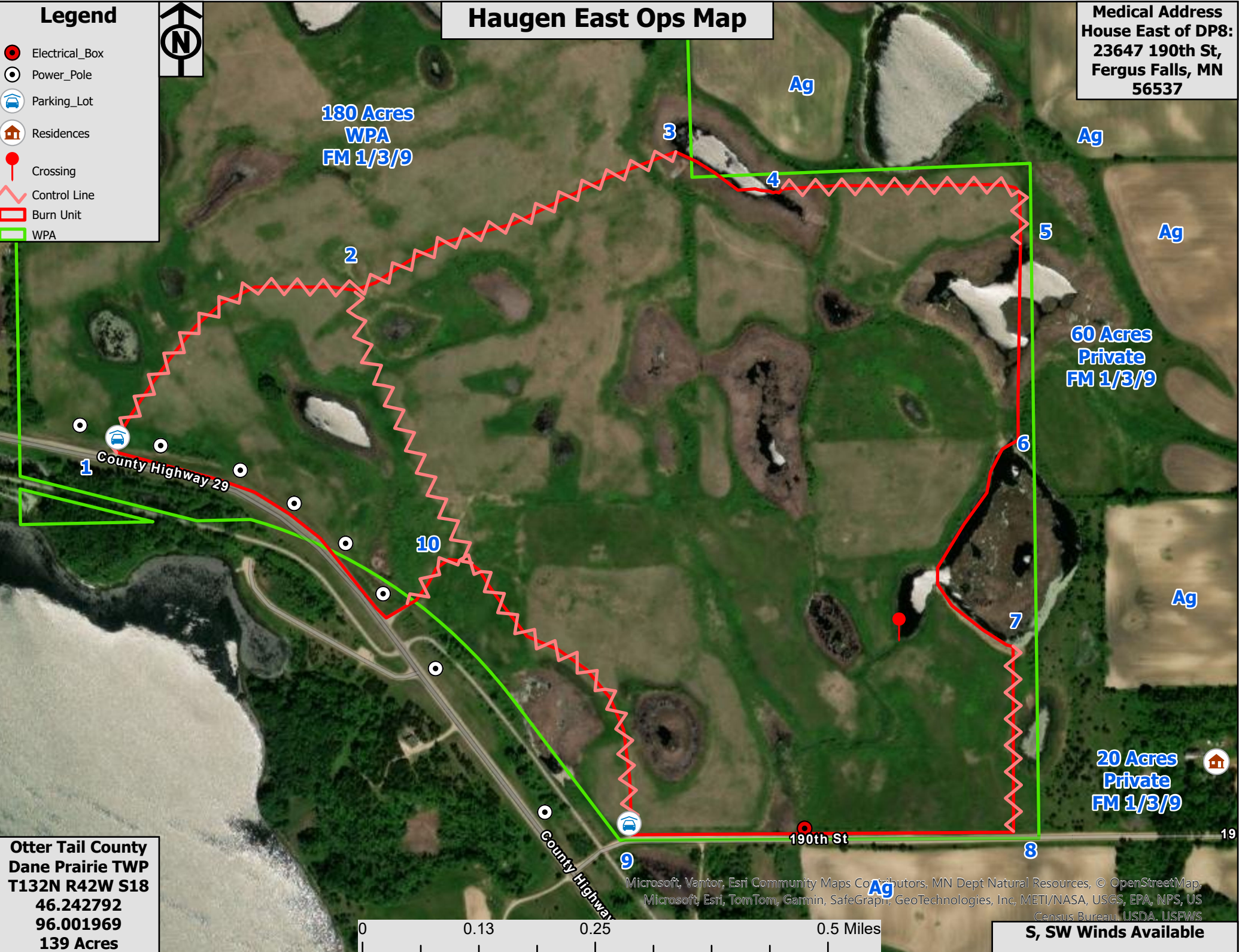


Haugen East Ops Map

Medical Address
House East of DP8:
23647 190th St,
Fergus Falls, MN
56537

- ### Legend
- Electrical_Box
 - Power_Pole
 - Parking_Lot
 - Residences
 - Crossing
 - Control Line
 - Burn Unit
 - WPA



Otter Tail County
Dane Prairie TWP
T132N R42W S18
46.242792
96.001969
139 Acres



Microsoft, Vantor, Esri Community Maps Co. Contributors, MN Dept Natural Resources, © OpenStreetMap, Microsoft, Esri, TomTom, Garmin, SafeGraph, GeoTechnologies, Inc, METI/NASA, USGS, EPA, NPS, US Census Bureau, USDA, USFWS

S, SW Winds Available