

# Legend

- Tree\_Piles
- Possible\_Access
- Deer\_Stand
- Residences
- Control Line
- Burn Unit

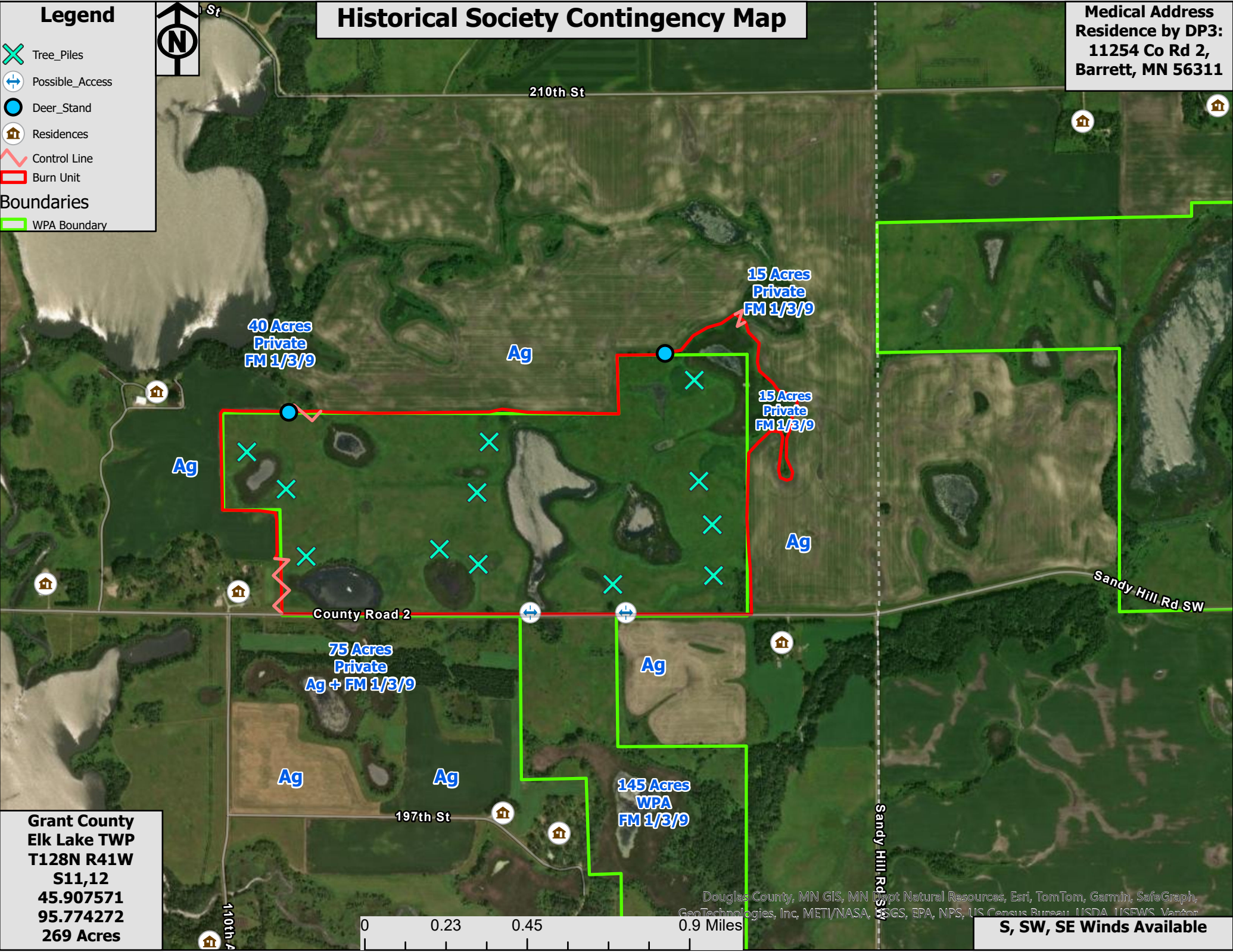
## Boundaries

- WPA Boundary



# Historical Society Contingency Map

Medical Address  
Residence by DP3:  
11254 Co Rd 2,  
Barrett, MN 56311



Grant County  
Elk Lake TWP  
T128N R41W  
S11,12  
45.907571  
95.774272  
269 Acres

0 0.23 0.45 0.9 Miles

Douglas County, MN GIS, MN Dept Natural Resources, Esri, TomTom, Garmin, SafeGraph, GeoTechnologies, Inc, METI/NASA, USGS, EPA, NPS, US Census Bureau, USDA, ISEWS, Vantor

S, SW, SE Winds Available