

Odens Contingency Map

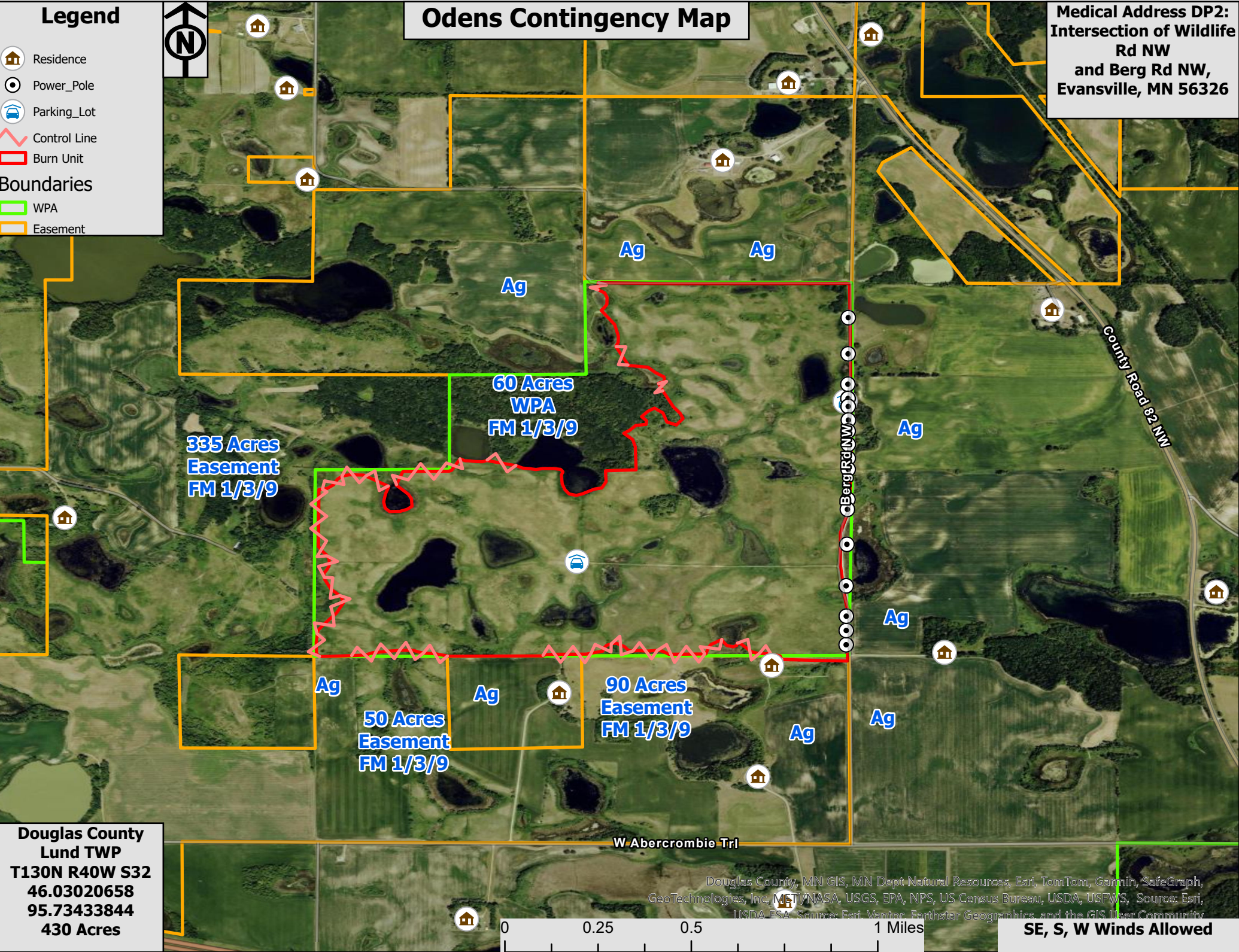
Medical Address DP2:
Intersection of Wildlife
Rd NW
and Berg Rd NW,
Evansville, MN 56326

Legend

- Residence
- Power_Pole
- Parking_Lot
- Control Line
- Burn Unit

Boundaries

- WPA
- Easement



335 Acres
Easement
FM 1/3/9

60 Acres
WPA
FM 1/3/9

50 Acres
Easement
FM 1/3/9

90 Acres
Easement
FM 1/3/9

Douglas County
Lund TWP
T130N R40W S32
46.03020658
95.73433844
430 Acres

Douglas County, MN GIS, MN Dept Natural Resources, Esri, TomTom, Garmin, SafeGraph, GeoTechnologies, Inc, MNT/NASA, USGS, EPA, NPS, US Census Bureau, USDA, USFWS, Source: Esri, USDA FSA, Source: Esri, Vantor, Earthstar Geographics, and the GIS User Community

SE, S, W Winds Allowed