

Pomme De Terre South Ops Map

Medical Address
1st House East of DP10:
15766 Point Comfort Rd,
Elbow Lake, MN 56531

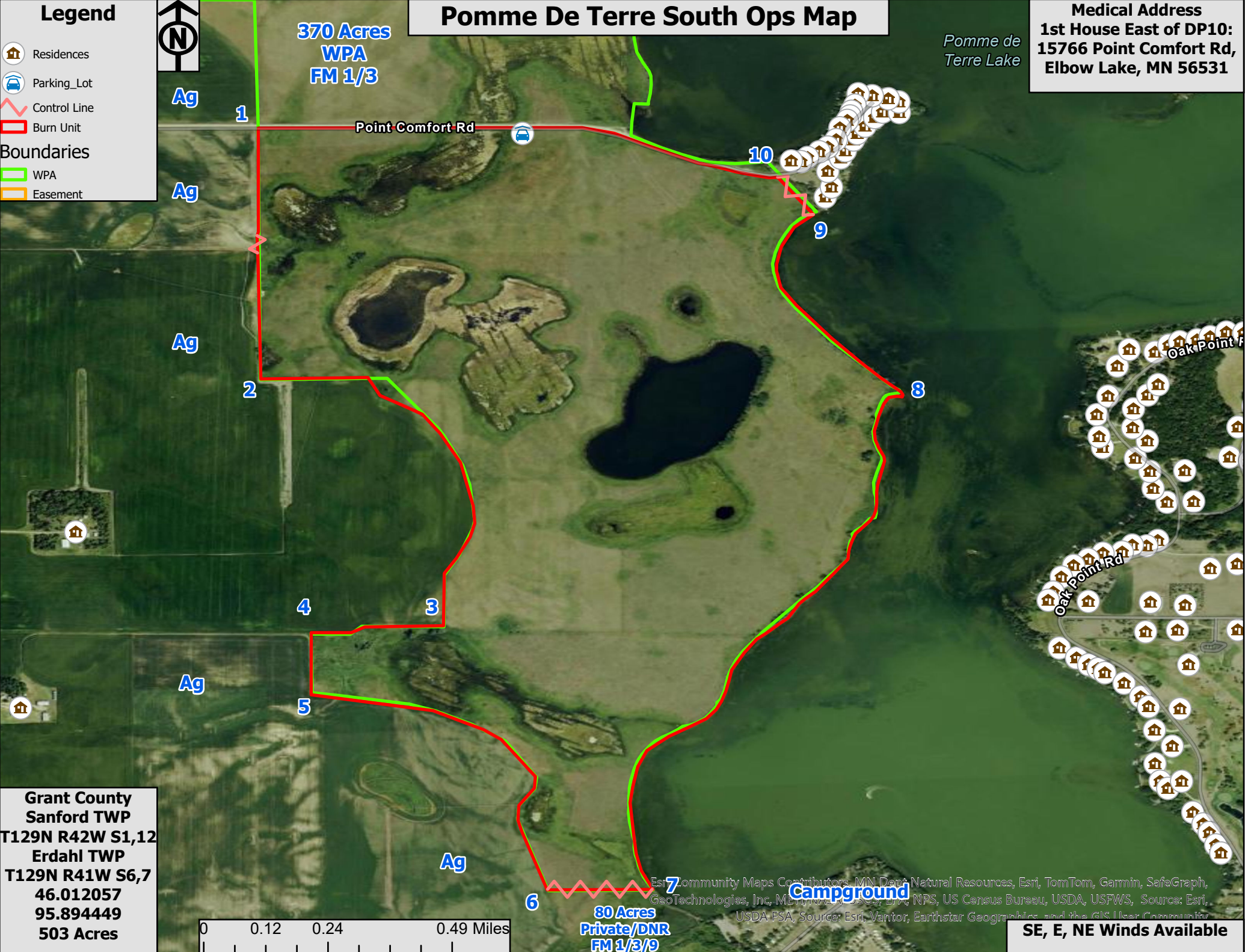
Pomme de
Terre Lake

Legend

- Residences
- Parking_Lot
- Control Line
- Burn Unit

Boundaries

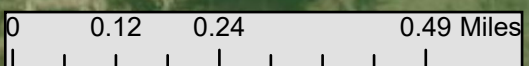
- WPA
- Easement



370 Acres
WPA
FM 1/3

80 Acres
Private/DNR
FM 1/3/9

Grant County
Sanford TWP
T129N R42W S1,12
Erdahl TWP
T129N R41W S6,7
46.012057
95.894449
503 Acres



Esri, Community Maps Contributors, MN Dept. Natural Resources, Esri, TomTom, Garmin, SafeGraph, GeoTechnologies, Inc, Microsoft, Google, Esri, NPS, US Census Bureau, USDA, USFWS, Source: Esri, USDA FSA, Source: Esri, Vantor, Earthstar Geographics, and the GIS User Community

SE, E, NE Winds Available